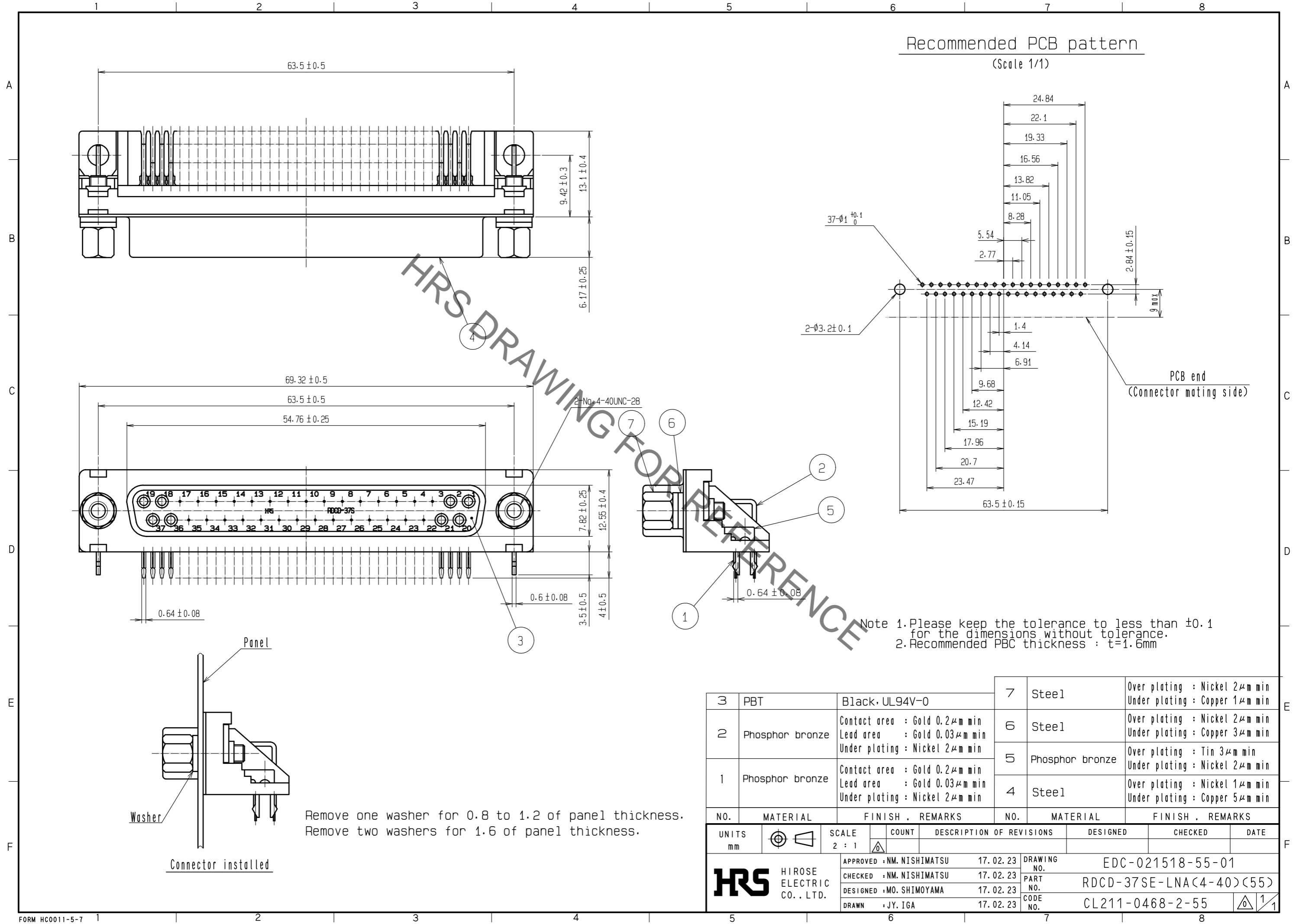


Sep.1.2021 Copyright 2021 HIROSE ELECTRIC CO., LTD. All Rights Reserved.
 In case of consideration for using Automotive equipment / device which demand high reliability, kindly contact our sales window correspondents.



Remove one washer for 0.8 to 1.2 of panel thickness.
 Remove two washers for 1.6 of panel thickness.

NO.	MATERIAL	FINISH . REMARKS	NO.	MATERIAL	FINISH . REMARKS
3	PBT	Black, UL94V-0	7	Steel	Over plating : Nickel 2μm min Under plating : Copper 1μm min
2	Phosphor bronze	Contact area : Gold 0.2μm min Lead area : Gold 0.03μm min Under plating : Nickel 2μm min	6	Steel	Over plating : Nickel 2μm min Under plating : Copper 3μm min
1	Phosphor bronze	Contact area : Gold 0.2μm min Lead area : Gold 0.03μm min Under plating : Nickel 2μm min	5	Phosphor bronze	Over plating : Tin 3μm min Under plating : Nickel 2μm min
			4	Steel	Over plating : Nickel 1μm min Under plating : Copper 5μm min

UNITS	SCALE	COUNT	DESCRIPTION OF REVISIONS	DESIGNED	CHECKED	DATE
mm	2 : 1	△				
APPROVED : NM. NISHIMATSU			17.02.23	DRAWING NO. EDC-021518-55-01		
CHECKED : NM. NISHIMATSU			17.02.23	PART NO. RDCD-37SE-LNA(4-40)(55)		
DESIGNED : MO. SHIMOYAMA			17.02.23	CODE NO. CL211-0468-2-55		
DRAWN : JY. IGA			17.02.23	1/1		

X-ON Electronics

Largest Supplier of Electrical and Electronic Components

Click to view similar products for [D-Sub Standard Connectors](#) category:

Click to view products by [Hirose](#) manufacturer:

Other Similar products are found below :

[56F706-005-LI](#) [56F711-015](#) [LV242999-142T12](#) [015-0341-000](#) [015-0372-005](#) [015-0372-008](#) [015-8755-001](#) [020419-0104](#) [012-0467-000](#)
[012-9507-034](#) [012-9507-114](#) [020745-0008](#) [609-25P](#) [CT2-18-11PCAU](#) [CT6-10SL-3SC](#) [CT6-10SL-4SC](#) [CT6-14S-2SC](#) [CT6E14SA7SC](#)
[CT6N10SL-4SSA34](#) [M83513/01-FC](#) [M83723/76W24619 L/C](#) [M85049/48-3-2F](#) [6STD09PCM99B70X](#) [6STD09SCM99B30X](#)
[6STD09SCT99S40X](#) [6STD15PCT99S40X](#) [6STD15SCT99S40X](#) [6STF09PCM05B70X](#) [7-135760-9](#) [MC11E-10-6SN](#) [747552-3](#) [MD1-21PS](#)
[MDM-15SCBRM7-F222](#) [MDM96517-699](#) [MDM96521-744](#) [MDVB1-21SL1](#) [MIK0-1-7SH003](#) [MIKQ6-7SH076](#) [MIKQ7-7PH077](#) [MIKQ7-](#)
[7PH11](#) [MIKQ7-7PH32](#) [MJSV-28SL61](#) [MKJ4A1F14-55S](#) [8-135760-3](#) [8STD09PCM99B30X](#) [PG-KV/PV-16-GROM-SEALING](#) [GDA15P](#)
[GDAY15PB](#) [980-0000-170](#) [980-0000-171](#)