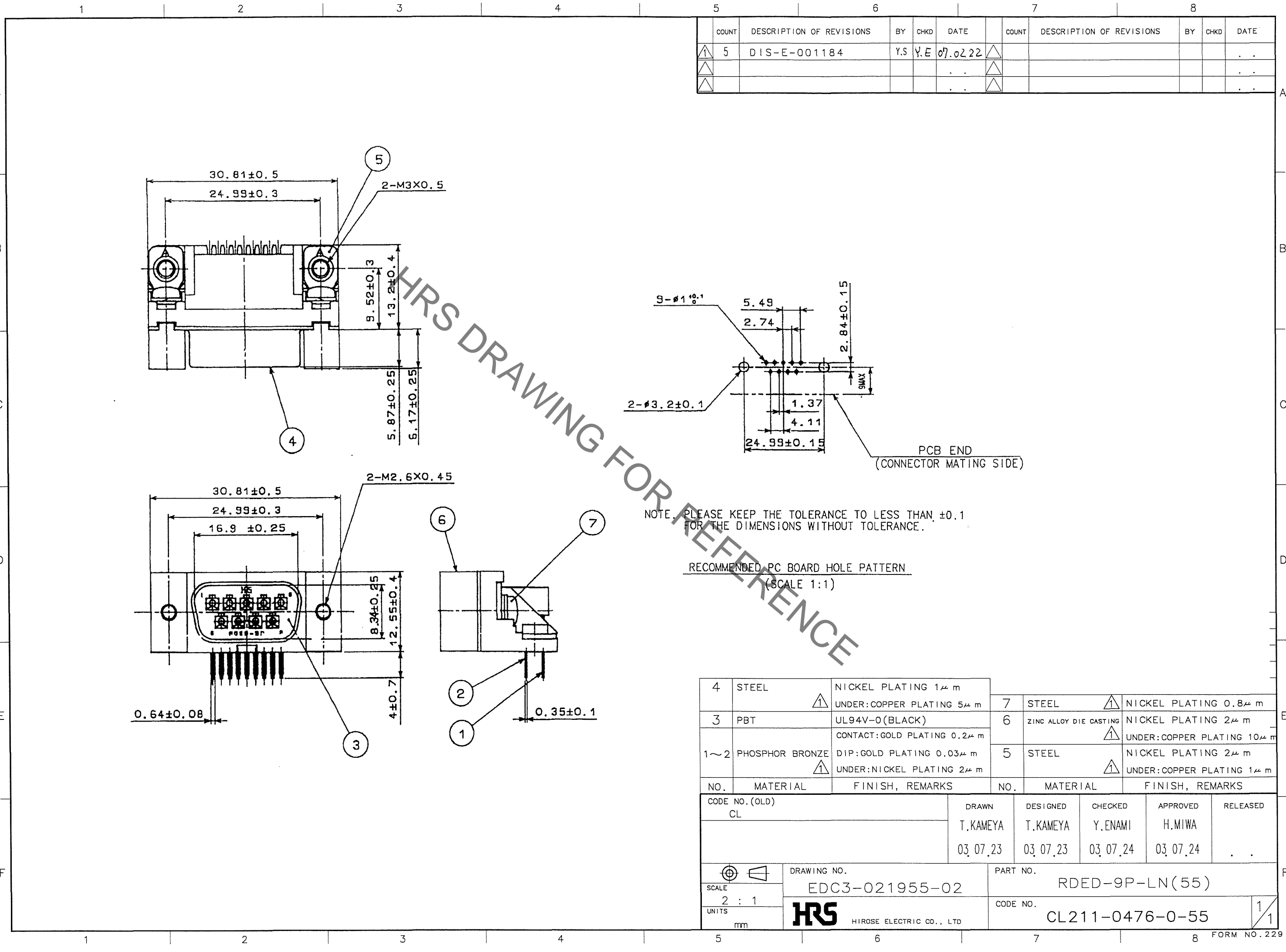


Sep.1.2021 Copyright 2021 HIROSE ELECTRIC CO., LTD. All Rights Reserved.  
In case of consideration for using Automotive equipment / device which demand high reliability, kindly contact our sales window correspondents.



COUNT	DESCRIPTION OF REVISIONS	BY	CHKD	DATE	COUNT	DESCRIPTION OF REVISIONS	BY	CHKD	DATE
5	DIS-E-001184	Y.S	Y.E	07.02.22					

HRS DRAWING FOR REFERENCE

NOTE, PLEASE KEEP THE TOLERANCE TO LESS THAN  $\pm 0.1$  FOR THE DIMENSIONS WITHOUT TOLERANCE.

RECOMMENDED PC BOARD HOLE PATTERN  
(SCALE 1:1)

4	STEEL	NICKEL PLATING $1 \mu\text{m}$ UNDER: COPPER PLATING $5 \mu\text{m}$	7	STEEL	NICKEL PLATING $0.8 \mu\text{m}$
3	PBT	UL94V-0 (BLACK)	6	ZINC ALLOY DIE CASTING	NICKEL PLATING $2 \mu\text{m}$ UNDER: COPPER PLATING $10 \mu\text{m}$
1~2	PHOSPHOR BRONZE	CONTACT: GOLD PLATING $0.2 \mu\text{m}$ DIP: GOLD PLATING $0.03 \mu\text{m}$ UNDER: NICKEL PLATING $2 \mu\text{m}$	5	STEEL	NICKEL PLATING $2 \mu\text{m}$ UNDER: COPPER PLATING $1 \mu\text{m}$
NO.	MATERIAL	FINISH, REMARKS	NO.	MATERIAL	FINISH, REMARKS

CODE NO. (OLD) CL		DRAWN T.KAMEYA 03.07.23	DESIGNED T.KAMEYA 03.07.23	CHECKED Y.ENAMI 03.07.24	APPROVED H.MIWA 03.07.24	RELEASED .
DRAWING NO. EDC3-021955-02		PART NO. RDED-9P-LN(55)		CODE NO. CL211-0476-0-55		
SCALE 2 : 1		UNITS mm		HIROSE ELECTRIC CO., LTD		

TO
Q

## X-ON Electronics

Largest Supplier of Electrical and Electronic Components

*Click to view similar products for [D-Sub Standard Connectors](#) category:*

*Click to view products by [Hirose](#) manufacturer:*

Other Similar products are found below :

[56F706-005-LI](#) [56F711-015](#) [LV242999-142T12](#) [015-0341-000](#) [015-0372-005](#) [015-0372-008](#) [015-8755-001](#) [020419-0104](#) [012-0467-000](#)  
[012-9507-034](#) [012-9507-114](#) [020745-0008](#) [609-25P](#) [CT2-18-11PCAU](#) [CT6-10SL-3SC](#) [CT6-10SL-4SC](#) [CT6-14S-2SC](#) [CT6E14SA7SC](#)  
[CT6N10SL-4SSA34](#) [M83513/01-FC](#) [M83723/76W24619 L/C](#) [M85049/48-3-2F](#) [6STD09PCM99B70X](#) [6STD09SCM99B30X](#)  
[6STD09SCT99S40X](#) [6STD15PCT99S40X](#) [6STD15SCT99S40X](#) [6STF09PCM05B70X](#) [7-135760-9](#) [MC11E-10-6SN](#) [747552-3](#) [MD1-21PS](#)  
[MDM-15SCBRM7-F222](#) [MDM96517-699](#) [MDM96521-744](#) [MDVB1-21SL1](#) [MIK0-1-7SH003](#) [MIKQ6-7SH076](#) [MIKQ7-7PH077](#) [MIKQ7-](#)  
[7PH11](#) [MIKQ7-7PH32](#) [MJSV-28SL61](#) [MKJ4A1F14-55S](#) [8-135760-3](#) [8STD09PCM99B30X](#) [PG-KV/PV-16-GROM-SEALING](#) [GDA15P](#)  
[GDAY15PB](#) [980-0000-170](#) [980-0000-171](#)