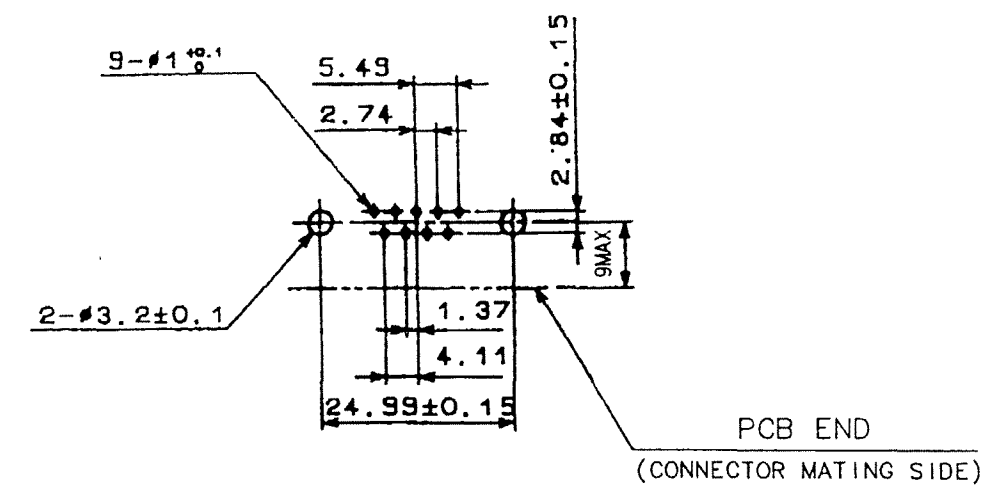
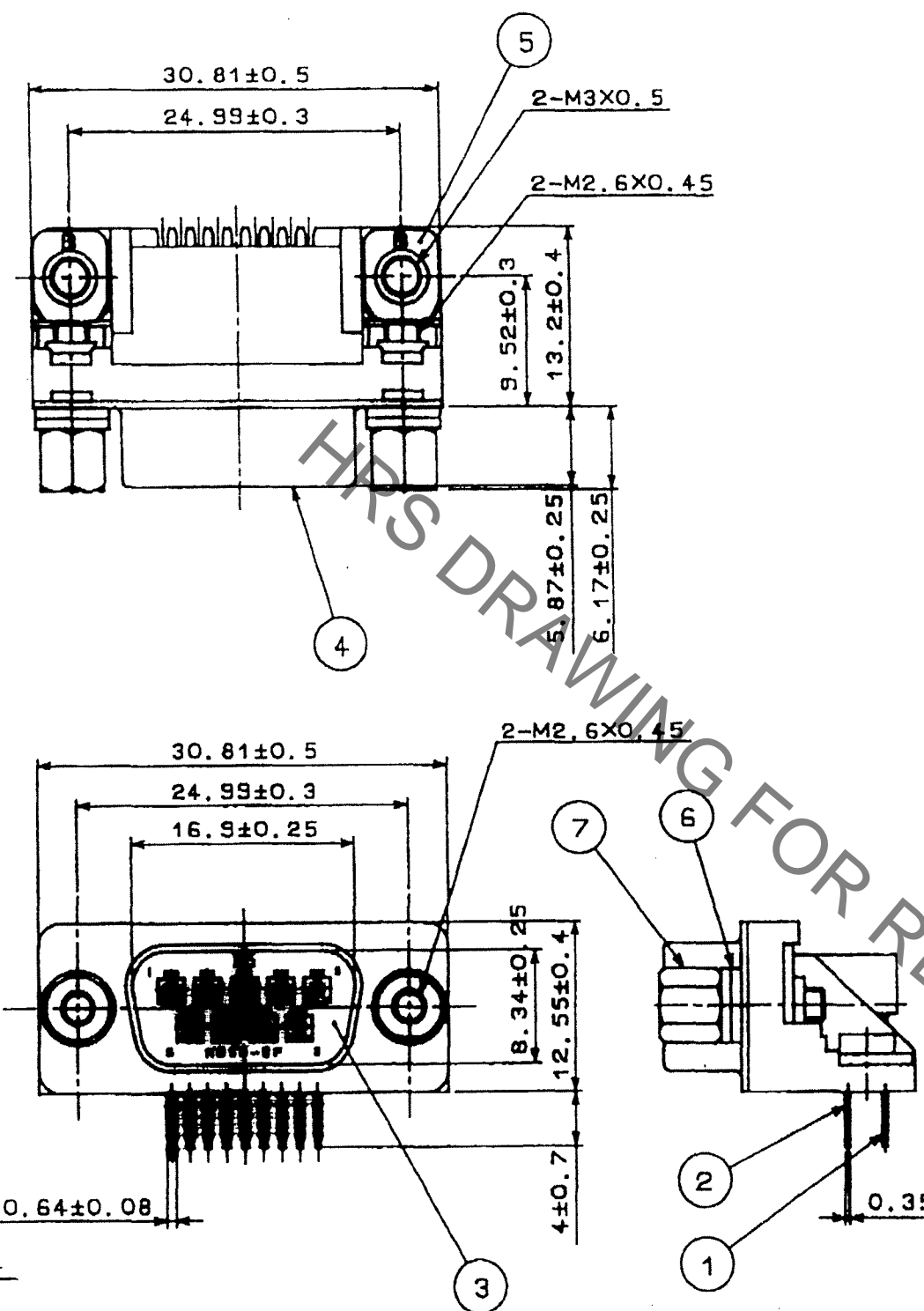
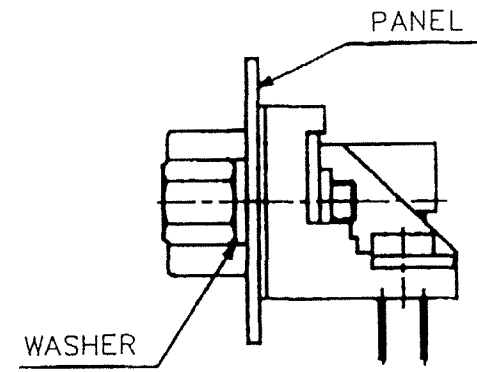


Sep.1.2021 Copyright 2021 HIROSE ELECTRIC CO., LTD. All Rights Reserved.  
In case of consideration for using Automotive equipment / device which demand high reliability, kindly contact our sales window correspondents.

| COUNT | DESCRIPTION OF REVISIONS | BY  | CHKD | DATE     | COUNT | DESCRIPTION OF REVISIONS | BY | CHKD | DATE |
|-------|--------------------------|-----|------|----------|-------|--------------------------|----|------|------|
| 5     | DIS-E-001184             | Y.S | Y.E  | 07.02.22 |       |                          |    |      |      |
|       |                          |     |      |          |       |                          |    |      |      |
|       |                          |     |      |          |       |                          |    |      |      |



NOTE. PLEASE KEEP THE TOLERANCE TO LESS THAN ±0.1 FOR THE DIMENSIONS WITHOUT TOLERANCE.



REMOVE ONE WASHER FOR 0.8-1.2 OF PANEL THICKNESS. REMOVE TWO WASHERS FOR 1.6 OF PANEL THICKNESS.

| 4   | STEEL           | NICKEL PLATING 1μm<br>UNDER: COPPER PLATING 5μm       | 7   | STEEL    | NICKEL PLATING 2μm<br>UNDER: COPPER PLATING 1μm |
|-----|-----------------|---|-----|----------|---|
| 3   | PBT             | UL94V-0(BLACK)<br>CONTACT: GOLD PLATING 0.2μm         | 6   | STEEL    | NICKEL PLATING 2μm<br>UNDER: COPPER PLATING 3μm |
| 1~2 | PHOSPHOR BRONZE | DIP: GOLD PLATING 0.03μm<br>UNDER: NICKEL PLATING 2μm | 5   | STEEL    | NICKEL PLATING 2μm<br>UNDER: COPPER PLATING 1μm |
| NO. | MATERIAL        | FINISH, REMARKS                                       | NO. | MATERIAL | FINISH, REMARKS                                 |

|                      |                                |                                   |                                 |                                 |                |
|----------------------|--------------------------------|-----------------------------------|---------------------------------|---------------------------------|----------------|
| CODE NO. (OLD)<br>CL | DRAWN<br>T. KAMEYA<br>03.07.31 | DESIGNED<br>T. KAMEYA<br>03.07.31 | CHECKED<br>Y. ENAMI<br>03.08.04 | APPROVED<br>H. MIWA<br>03.08.05 | RELEASED<br>.. |
|----------------------|--------------------------------|-----------------------------------|---------------------------------|---------------------------------|----------------|

|                |                               |                             |
|----------------|-------------------------------|-----------------------------|
| SCALE<br>2 : 1 | DRAWING NO.<br>EDC3-021864-02 | PART NO.<br>RDED-9P-LNA(55) |
| UNITS<br>mm    | HIROSE ELECTRIC CO., LTD      | CODE NO.<br>CL211-0477-3-55 |

|    |
|----|
| TO |
| Q  |
|    |
|    |

## X-ON Electronics

Largest Supplier of Electrical and Electronic Components

*Click to view similar products for [D-Sub Standard Connectors](#) category:*

*Click to view products by [Hirose](#) manufacturer:*

Other Similar products are found below :

[56F706-005-LI](#) [56F711-015](#) [LV242999-142T12](#) [015-0341-000](#) [015-0372-005](#) [015-0372-008](#) [015-8755-001](#) [020419-0104](#) [012-0467-000](#)  
[012-9507-034](#) [012-9507-114](#) [020745-0008](#) [609-25P](#) [CT2-18-11PCAU](#) [CT6-10SL-3SC](#) [CT6-10SL-4SC](#) [CT6-14S-2SC](#) [CT6E14SA7SC](#)  
[CT6N10SL-4SSA34](#) [M83513/01-FC](#) [M83723/76W24619 L/C](#) [M85049/48-3-2F](#) [6STD09PCM99B70X](#) [6STD09SCM99B30X](#)  
[6STD09SCT99S40X](#) [6STD15PCT99S40X](#) [6STD15SCT99S40X](#) [6STF09PCM05B70X](#) [7-135760-9](#) [MC11E-10-6SN](#) [747552-3](#) [MD1-21PS](#)  
[MDM-15SCBRM7-F222](#) [MDM96517-699](#) [MDM96521-744](#) [MDVB1-21SL1](#) [MIK0-1-7SH003](#) [MIKQ6-7SH076](#) [MIKQ7-7PH077](#) [MIKQ7-](#)  
[7PH11](#) [MIKQ7-7PH32](#) [MJSV-28SL61](#) [MKJ4A1F14-55S](#) [8-135760-3](#) [8STD09PCM99B30X](#) [PG-KV/PV-16-GROM-SEALING](#) [GDA15P](#)  
[GDAY15PB](#) [980-0000-170](#) [980-0000-171](#)