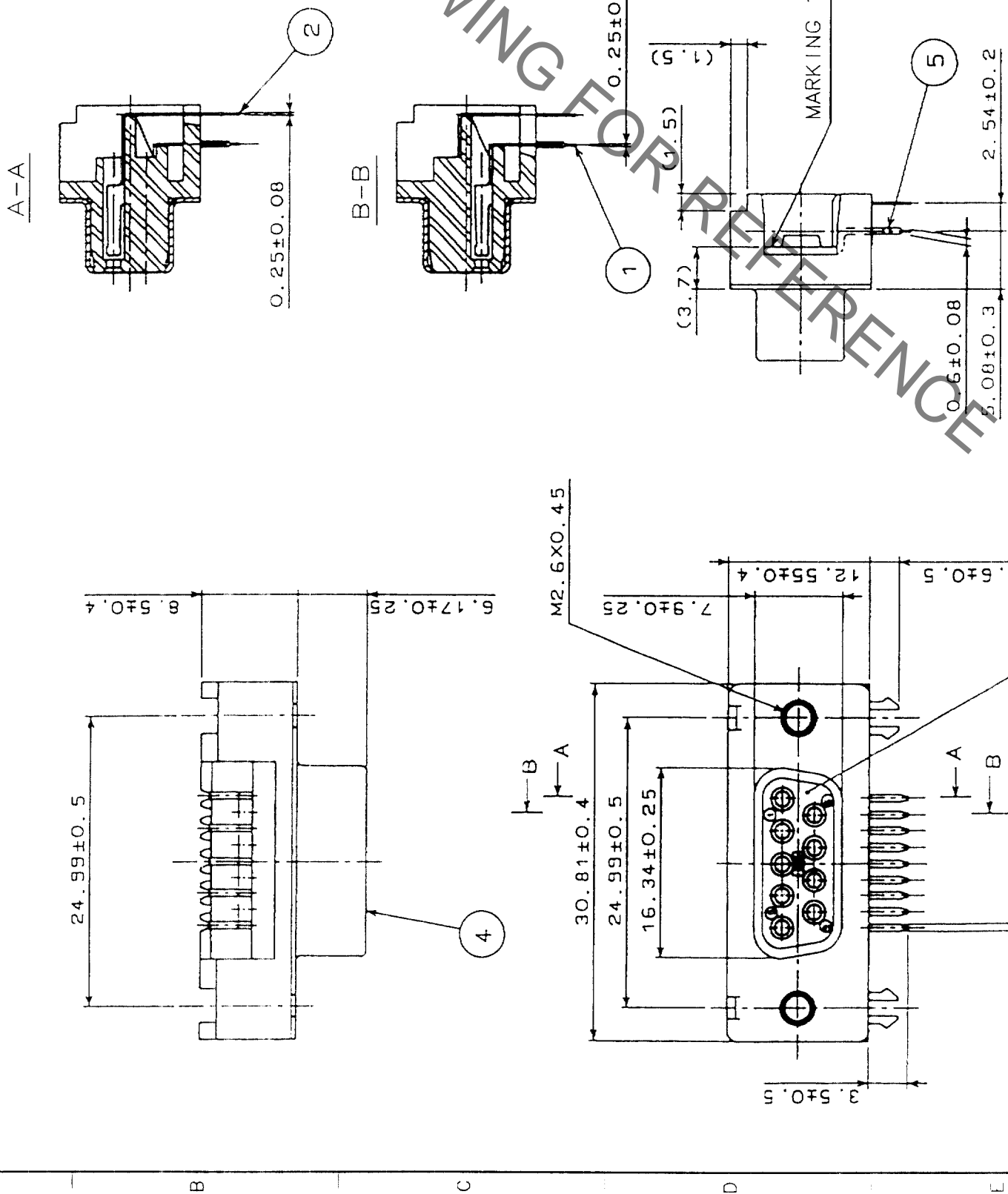


COUNT	DESCRIPTION OF REVISIONS	BY	CHKD	DATE	COUNT	DESCRIPTION OF REVISIONS	BY	CHKD	DATE
1					1				
2					2				
3					3				
4					4				
5					5				

RECOMMENDED PC BOARD HOLE PATTERN
 (SCALE 1/1)



- NOTES
- PLEASE KEEP THE TOLERANCE TO LESS THAN ± 0.1 FOR THE DIMENSIONS WITHOUT TOLERANCE.
 - THICKNESS OF PC BOARD SHALL BE 1.6mm.
 - REF. NO. ③ AND ④ SHALL BE TEMPORARILY.
 - REF. NO. ③ AND ⑤ SHALL BE TEMPORARILY.
 - LOCK SCREW SHALL BE SOLD SEPARATELY.

NO.	MATERIAL	FINISH, REMARKS	NO.	MATERIAL	FINISH, REMARKS
3	PBT	UL94V-0 (BLACK)	5	BRASS	TIN PLATING
2	PHOSPHOR BRONZE	SELECTIVE GOLD PLATING 0.2 μ m	4	STEEL	NICKEL PLATING
1	PHOSPHOR BRONZE	SELECTIVE GOLD PLATING 0.2 μ m			

CODE NO. (OLD)	CL	DRAWN	DESIGNED	CHECKED	APPROVED	RELEASED
		<i>T. Yamaguchi</i>	<i>Y. Yamaguchi</i>	<i>Y. Yamaguchi</i>	<i>H. Miura</i>	
		03.08.26	03.08.26	03.08.26	03.08.28	

DRAWING NO.	PART NO.
EDC3-045288-01	RDEG-9SE1 (50)

SCALE	UNITS	CODE NO.
2 : 1	MM	CL211-5200-7-50

TO
Q

X-ON Electronics

Largest Supplier of Electrical and Electronic Components

Click to view similar products for [D-Sub Standard Connectors](#) category:

Click to view products by [Hirose](#) manufacturer:

Other Similar products are found below :

[56F706-005-LI](#) [56F711-015](#) [LV242999-142T12](#) [015-0341-000](#) [015-0372-005](#) [015-0372-008](#) [015-8755-001](#) [020419-0104](#) [012-0467-000](#)
[012-9507-034](#) [012-9507-114](#) [020745-0008](#) [609-25P](#) [CT2-18-11PCAU](#) [CT6-10SL-3SC](#) [CT6-10SL-4SC](#) [CT6-14S-2SC](#) [CT6E14SA7SC](#)
[CT6N10SL-4SSA34](#) [M83513/01-FC](#) [M83723/76W24619 L/C](#) [M85049/48-3-2F](#) [6STD09PCM99B70X](#) [6STD09SCM99B30X](#)
[6STD09SCT99S40X](#) [6STD15PCT99S40X](#) [6STD15SCT99S40X](#) [6STF09PCM05B70X](#) [7-135760-9](#) [MC11E-10-6SN](#) [747552-3](#) [MD1-21PS](#)
[MDM-15SCBRM7-F222](#) [MDM96517-699](#) [MDM96521-744](#) [MDVB1-21SL1](#) [MIK0-1-7SH003](#) [MIKQ6-7SH076](#) [MIKQ7-7PH077](#) [MIKQ7-](#)
[7PH11](#) [MIKQ7-7PH32](#) [MJSV-28SL61](#) [MKJ4A1F14-55S](#) [8-135760-3](#) [8STD09PCM99B30X](#) [PG-KV/PV-16-GROM-SEALING](#) [GDA15P](#)
[GDAY15PB](#) [980-0000-170](#) [980-0000-171](#)