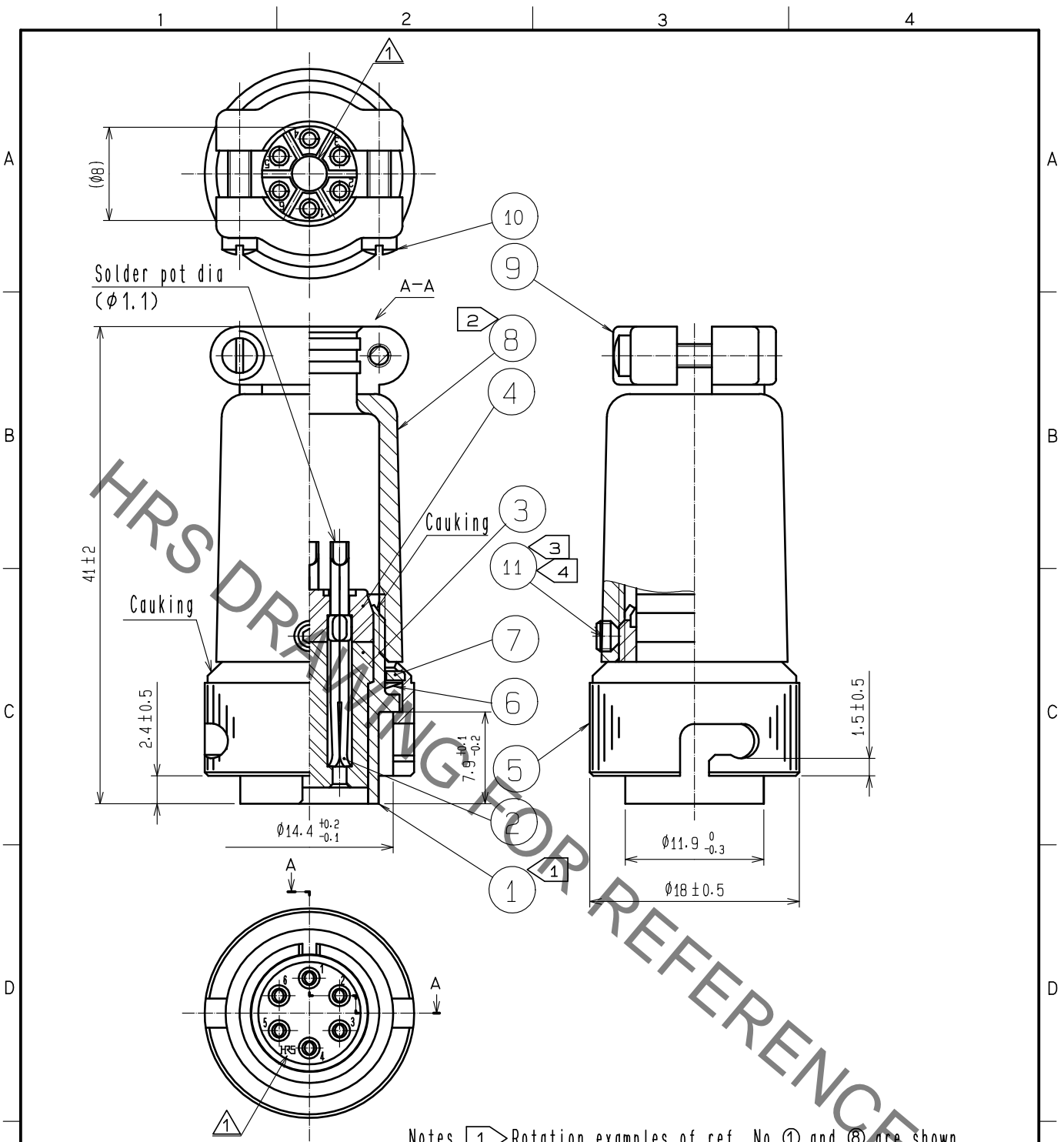


Sep. 1. 2021 Copyright 2021 HIROSE ELECTRIC CO., LTD. All Rights Reserved.  
In case of consideration for using Automotive equipment / device which demand high reliability, kindly contact our sales window correspondents.



- Notes
- ① Rotation examples of ref. No. ① and ② are shown.
  - ② The recommended torque of ref. No. ⑧ : 2 to 3 N · m.
  - ③ The recommended torque of ref. No. ⑩ : 0.3 to 0.4 N · m.
  - ④ Bolting tool for ref. No. ⑩ : PB205/1.27 (CL150-0066-3)

| NO. | MATERIAL     | FINISH                      | REMARKS | NO. | MATERIAL         | FINISH                      | REMARKS                                     |
|-----|--------------|-----------------------------|---------|-----|------------------|-----------------------------|---|
| 5   | BRASS        | MATTE FINISH NICKEL PLATING |         | 11  | STEEL            | NICKEL PLATING              | THE WIDTH ACROSS OF A HEXAGON SOCKET : 1.27 |
| 4   | PPS          | (BLACK) UL94V-0             |         | 10  | BRASS            | NICKEL PLATING              |   |
| 3   | PPS          | (BLACK) UL94V-0             |         | 9   | ZINC ALLOY       | MATTE FINISH NICKEL PLATING |   |
| 2   | COPPER ALLOY | SILVER PLATING 5 μm min.    |         | 8   | ZINC ALLOY       | MATTE FINISH NICKEL PLATING |   |
| 1   | ZINC ALLOY   | MATTE FINISH NICKEL PLATING |         | 7   | BRASS            | NICKEL PLATING              |   |
|     |              |                             |         | 6   | BERYLLIUM COPPER | NICKEL PLATING              |   |

| UNITS mm                             | SCALE | COUNT | DESCRIPTION OF REVISIONS   | DESIGNED  | CHECKED       | DATE       |
|--------------------------------------|-------|-------|--|---|---------------|------------|
| mm                                   | 2 : 1 | 2     | DIS-C-00000559   | KN. IKEHARA   | HY. KOBAYASHI | 15. 11. 02 |
| <b>HRS</b> HIROSE ELECTRIC CO., LTD. |       |       | APPROVED : HY. KOBAYASHI 15. 09. 10<br>CHECKED : HY. KOBAYASHI 15. 09. 10<br>DESIGNED : KN. IKEHARA 15. 09. 10<br>DRAWN : KN. IKEHARA 15. 09. 10 | DRAWING NO. EDC-112329-81-00<br>PART NO. RM12BPE-6S(81)<br>CODE NO. CL109-0427-0-81 |               |            |

## X-ON Electronics

Largest Supplier of Electrical and Electronic Components

*Click to view similar products for [Standard Circular Connector](#) category:*

*Click to view products by [Hirose](#) manufacturer:*

Other Similar products are found below :

[5M2530B10P](#) [600259N006](#) [600273N007](#) [6134-336-13149](#) [6134-337-11149](#) [6134-337-2390](#) [6134-341-17149](#) [6280-4SG-516](#) [6280-7SG-3DC](#)  
[6290](#) [6291A](#) [66200A-10](#) [680-SMG](#) [681-PMG](#) [CXS3102A14S2P](#) [CXS3102A181S](#) [7251-6SG-300](#) [7271-6SG-300](#) [7282-3PG-300-CH3](#) [75-](#)  
[474014-05S](#) [75-474618-01S](#) [75-474618-04S](#) [799539-000](#) [MI8-SE](#) [805-005-07NF11-19PC](#) [805-005-07NF15-7PA](#) [8280-4PG-516](#) [8280-7PG-](#)  
[519](#) [8282-5PG-519](#) [836783-1](#) [MP-4102-25P-C](#) [862256-1](#) [864019-2](#) [866857-1](#) [867865-1](#) [PT01SP-14-18P](#) [PT08P-14-5S](#) [PTSF06SE-14-12S](#)  
[120-1833-000](#) [QCM019PC2DC012B](#) [1-2069279-1](#) [121583-0217](#) [121667-0020](#) [129591AU](#) [1000B BULK](#) [RD10A16-19-P6CS051/1](#)  
[RD10A20-31-P8CS051/1](#) [RD16A14-12-S6CS051/2](#) [1301240290](#) [1301240347](#) [1301860202](#)