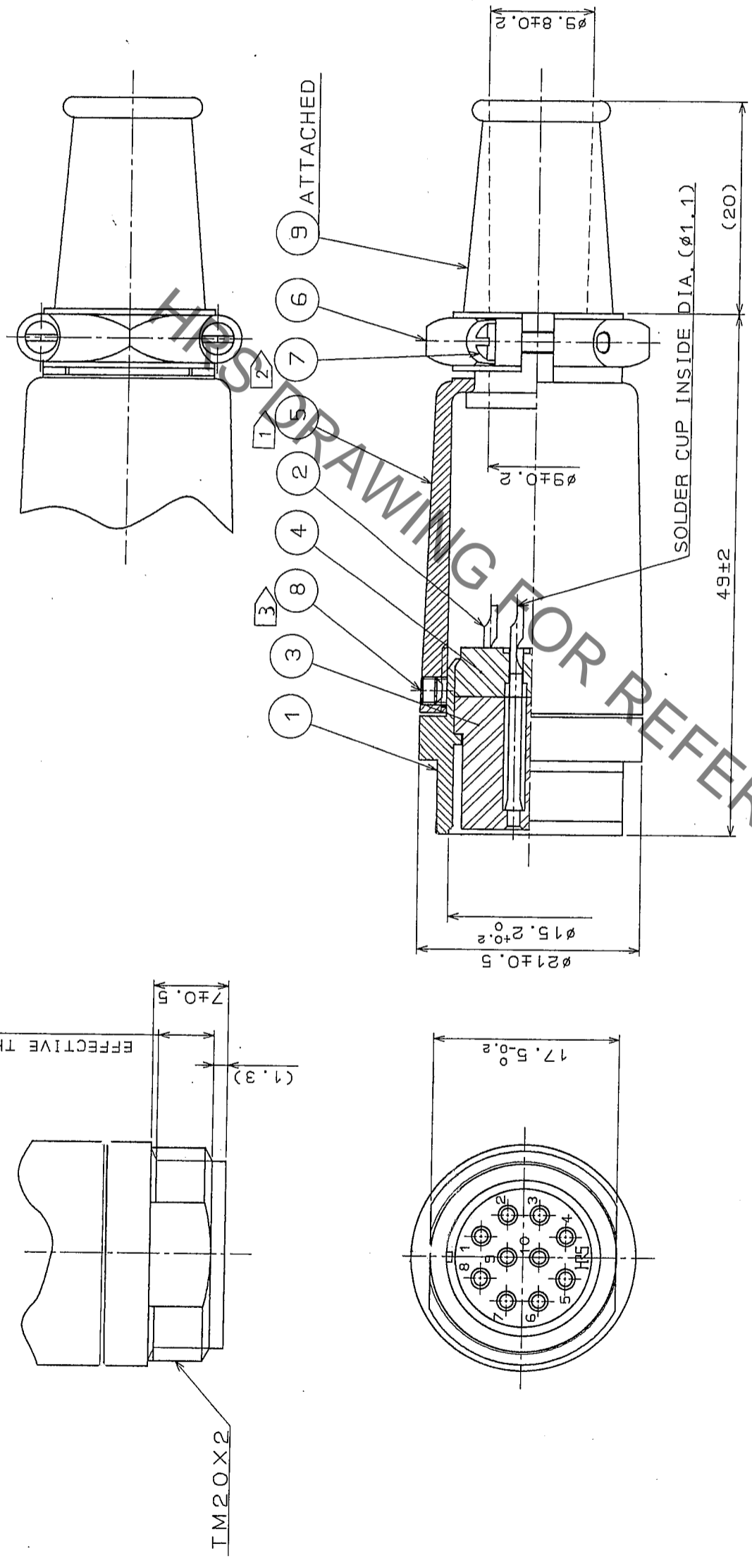


Jun.1.2019 Copyright 2019 HIROSE ELECTRIC CO., LTD. All Rights Reserved.
 In case of consideration for using Automotive equipment / device which demand high reliability, kindly contact our sales window correspondents.

7	8
COUNT DESCRIPTION OF REVISIONS BY CHKD DATE	COUNT DESCRIPTION OF REVISIONS BY CHKD DATE



5	ALUMINUM ALLOY	MATTE FINISH ALUMITE (SILVER)	9	CR	(BLACK)
4	DIALYL PHTHALATE	(BLACK)	UL94V-0	STEEL	NICKEL PLATING HEXAGON SOCKET SET SCREW M2.6X0.4X2
3	DIALYL PHTHALATE	(BLACK)	UL94V-0	BRASS	NICKEL PLATING M2X0.4X8
2	COPPER ALLOY	SILVER PLATING 3μm min.	7	ALUMINUM ALLOY	MATTE FINISH ALUMITE (SILVER)
1	ZINC ALLOY	MATTE FINISH CHROME PLATE	6	MATERIAL	FINISH, REMARKS
NO.	MATERIAL	FINISH, REMARKS	NO.	MATERIAL	FINISH, REMARKS
CODE NO. (OLD)	DRAWN	DESIGNED	CHECKED	APPROVED	RELEASED
	<i>Y. Yamada</i>	<i>Y. Yamada</i>	<i>H. Zembu</i>	<i>M. Sato</i>	
	05.09.12	05.09.12	05.09.17	05.09.26	

NOTES
 ① THE RECOMMENDED CLAMP TORQUE OF REF.NO. ⑤ TO BE 2 TO 3 N·m.
 ② THE RECOMMENDED CLAMP TORQUE OF REF.NO. ⑦ TO BE 0.12 TO 0.15 N·m.
 ③ THE RECOMMENDED CLAMP TORQUE OF REF.NO. ⑧ TO BE 0.3 TO 0.4 N·m.
 ④ RECOMMENDED ADHESIVE TO PREVENT LOOSENESS OF THE SCREW FOR REF.NO. ⑧ : PRODUCT NO. LOCTITE 242.
 ⑤ ROTATION EXAMPLES OF REF.NO. ① AND ⑤ ARE SHOWN.

DRAWING NO. EDC3-006654-71		PART NO. RM15TJD-10S (71)	
SCALE 2:1	UNITS mm	CODE NO. CL109-0603-1-71	FORM No. 229
HRS HIROSE ELECTRIC CO., LTD.		1/1	

X-ON Electronics

Largest Supplier of Electrical and Electronic Components

Click to view similar products for [Standard Circular Connector](#) category:

Click to view products by [Hirose](#) manufacturer:

Other Similar products are found below :

[5M2530B10P](#) [600259N006](#) [600273N007](#) [6134-336-13149](#) [6134-337-11149](#) [6134-337-2390](#) [6134-341-17149](#) [6280-4SG-516](#) [6280-7SG-3DC](#)
[6290](#) [6291A](#) [66200A-10](#) [680-SMG](#) [681-PMG](#) [CXS3102A14S2P](#) [CXS3102A181S](#) [7251-6SG-300](#) [7271-6SG-300](#) [7282-3PG-300-CH3](#) [75-](#)
[474014-05S](#) [75-474618-01S](#) [75-474618-04P](#) [75-474618-04S](#) [799539-000](#) [MI8-SE](#) [805-005-07NF11-19PC](#) [805-005-07NF15-7PA](#) [8280-4PG-](#)
[516](#) [8280-7PG-519](#) [8282-5PG-519](#) [836783-1](#) [MP-4102-25P-C](#) [862256-1](#) [864019-2](#) [866857-1](#) [867865-1](#) [PT01SP-14-18P](#) [PT08P-14-5S](#)
[PTSF06SE-14-12S](#) [120-1833-000](#) [QCM019PC2DC012B](#) [1-2069279-1](#) [121583-0217](#) [121667-0020](#) [129591AU](#) [1000B BULK](#) [RD10A16-19-](#)
[P6CS051/1](#) [RD10A20-31-P8CS051/1](#) [RD16A14-12-S6CS051/2](#) [1301240290](#) [1301240347](#)