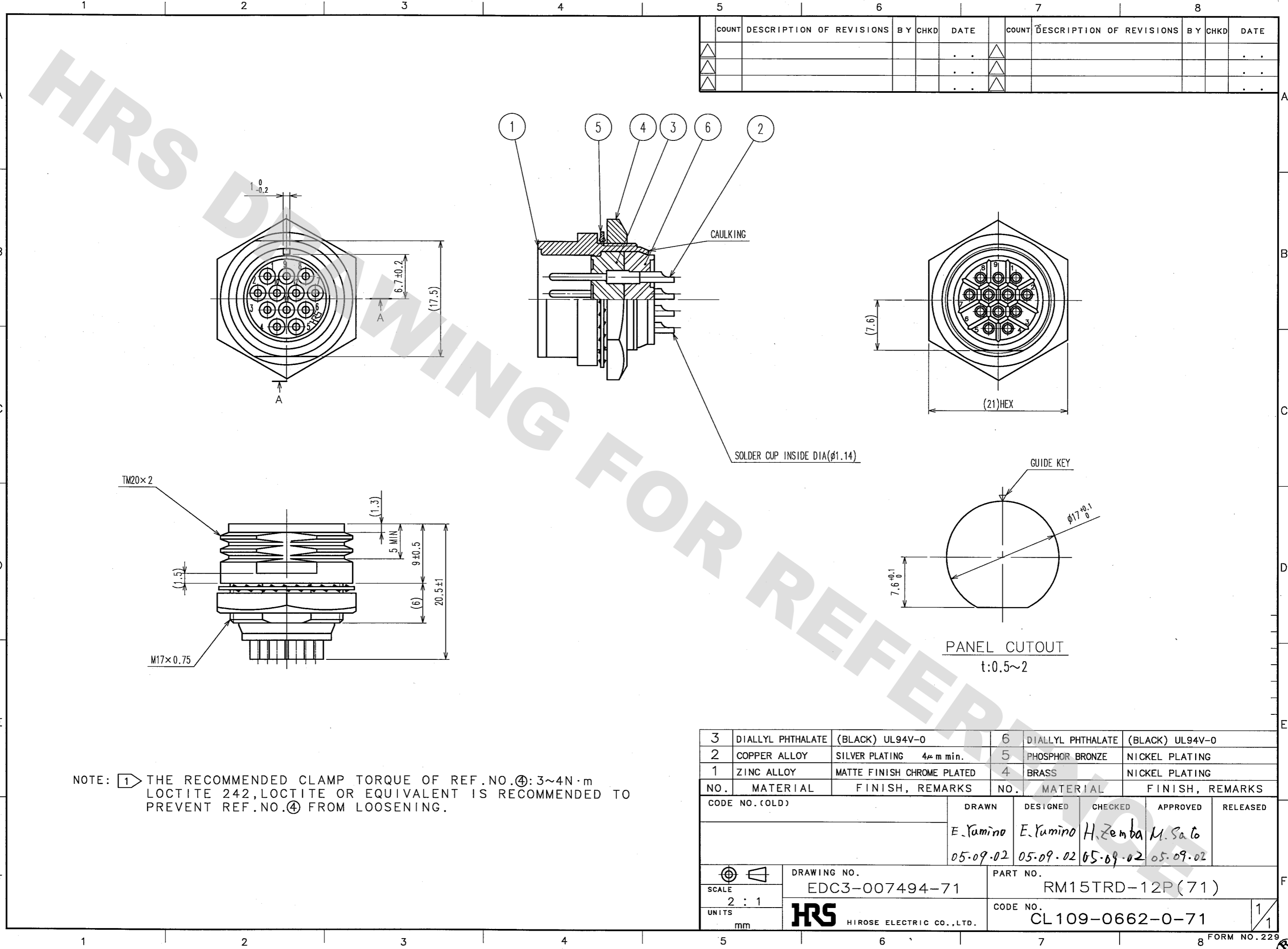


DRAWING FOR REFERENCE: This is subject to change without notice  
08/11/2012



NOTE: ① THE RECOMMENDED CLAMP TORQUE OF REF.NO.④: 3~4N·m  
LOCTITE 242, LOCTITE OR EQUIVALENT IS RECOMMENDED TO  
PREVENT REF.NO.④ FROM LOOSENING.

COUNT	DESCRIPTION OF REVISIONS	BY	CHKD	DATE	COUNT	DESCRIPTION OF REVISIONS	BY	CHKD	DATE
△				..	△				..
△				..	△				..
△				..	△				..

3	DIALYL PHTHALATE (BLACK) UL94V-0	6	DIALYL PHTHALATE (BLACK) UL94V-0				
2	COPPER ALLOY SILVER PLATING 4μ m min.	5	PHOSPHOR BRONZE NICKEL PLATING				
1	ZINC ALLOY MATTE FINISH CHROME PLATED	4	BRASS NICKEL PLATING				
NO.	MATERIAL	FINISH, REMARKS	NO.	MATERIAL	FINISH, REMARKS		
CODE NO. (OLD)			DRAWN	DESIGNED	CHECKED	APPROVED	RELEASED
			E. Yumino	E. Yumino	H. Zemba	M. Sato	
			05.09.02	05.09.02	05.09.02	05.09.02	
SCALE		DRAWING NO.	PART NO.				
2 : 1		EDC3-007494-71	RM15TRD-12P(71)				
UNITS		HRS		CODE NO.		1	
mm		HIROSE ELECTRIC CO., LTD.		CL109-0662-0-71		1	

TO  
R

## X-ON Electronics

Largest Supplier of Electrical and Electronic Components

*Click to view similar products for [Standard Circular Connector](#) category:*

*Click to view products by [Hirose](#) manufacturer:*

Other Similar products are found below :

[5M2530B10P](#) [600259N006](#) [600273N007](#) [6134-336-13149](#) [6134-337-11149](#) [6134-337-2390](#) [6134-341-17149](#) [6280-4SG-516](#) [6280-7SG-3DC](#)  
[6290](#) [6291A](#) [66200A-10](#) [680-SMG](#) [681-PMG](#) [CXS3102A14S2P](#) [CXS3102A181S](#) [7251-6SG-300](#) [7271-6SG-300](#) [7282-3PG-300-CH3](#) [75-](#)  
[474014-05S](#) [75-474618-01S](#) [75-474618-04P](#) [75-474618-04S](#) [799539-000](#) [MI8-SE](#) [805-005-07NF11-19PC](#) [805-005-07NF15-7PA](#) [8280-4PG-](#)  
[516](#) [8280-7PG-519](#) [8282-5PG-519](#) [836783-1](#) [MP-4102-25P-C](#) [862256-1](#) [864019-2](#) [866857-1](#) [867865-1](#) [PT01SP-14-18P](#) [PT08P-14-5S](#) [120-](#)  
[1833-000](#) [QCM019PC2DC012B](#) [1-2069279-1](#) [121583-0217](#) [121667-0020](#) [129591AU](#) [1000B BULK](#) [RD10A16-19-P6CS051/1](#) [RD10A20-31-](#)  
[P8CS051/1](#) [RD16A14-12-S6CS051/2](#) [1301240290](#) [1301240347](#) [1301860202](#)