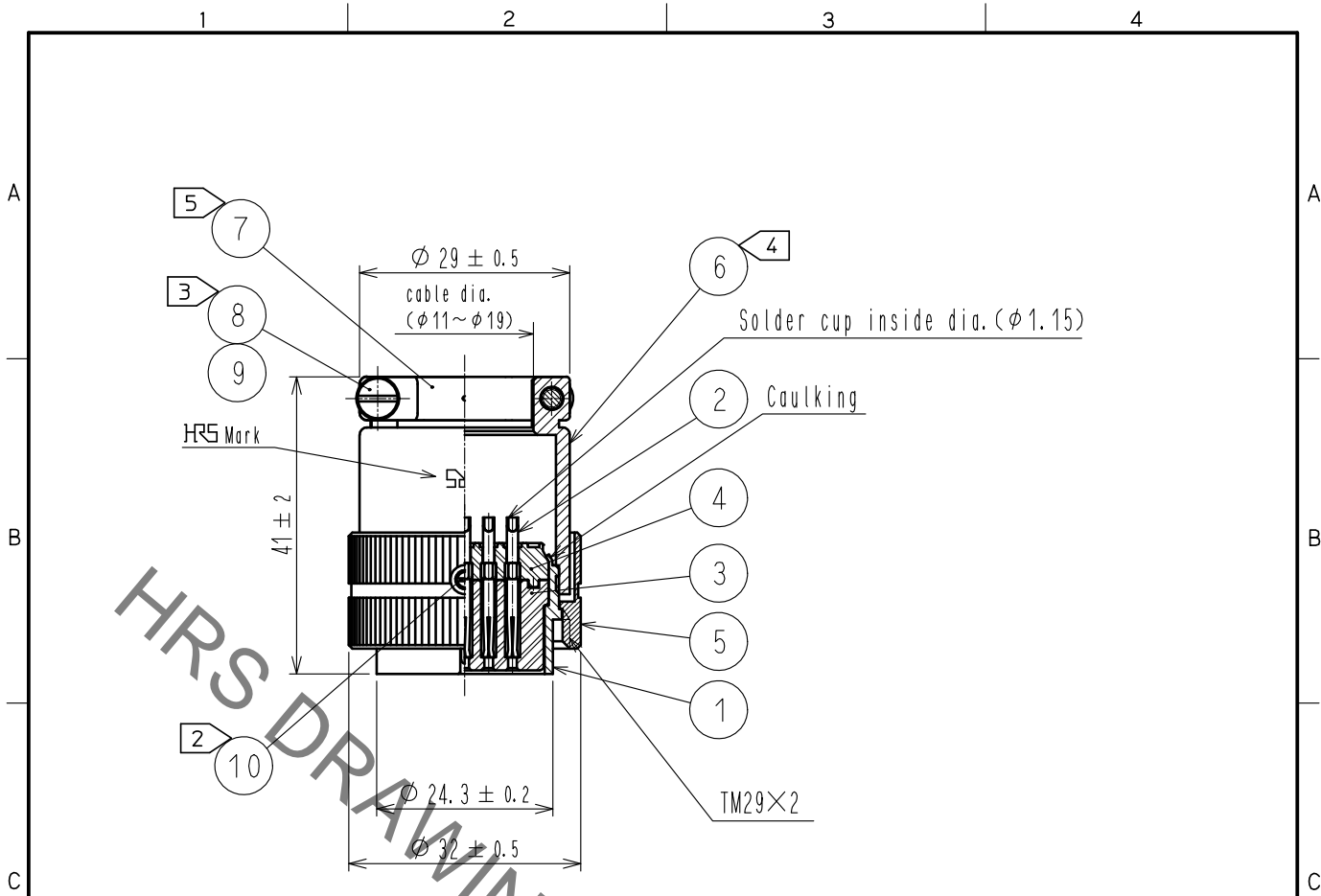


Sep. 1. 2021 Copyright 2021 HIROSE ELECTRIC CO., LTD. All Rights Reserved.  
 In case of consideration for using Automotive equipment / device which demand high reliability, kindly contact our sales window correspondents.



- Notes
- 1 Rotation example of ref. No. ① and ⑥ are shown.
  - 2 The recommended tightening torque of ref. No. ⑩ : 0.2 to 0.3 N·m. LOCTITE 243, HENKEL JAPAN or equivalent is recommended to prevent ref. No. ⑩ from loosening.
  - 3 The recommended tightening torque of ref. No. ⑧ : 0.6 to 0.7 N·m.
  - 4 The recommended tightening torque of ref. No. ⑥ : 2 to 3 N·m.
  - 5 Clamp movable range of ref. No. ⑦ : 15 max., 8 min.
  - 6 The cable pull and twisting strength and other characteristics may differ, depending on the cable structure, please confirm before the use.

5	Brass $\triangle$	Nickel plating	10	Brass $\triangle$	Nickel plating
4	PPS	(Black) UL94V-0	9	Phosphor bronze	Nickel plating JIS B 1251
3	PPS	(Black) UL94V-0	8	Brass $\triangle$	Nickel plating JIS B 1101 M3×0.5×14
2	Copper alloy	Silver plating 5 $\mu$ m min	7	Brass $\triangle$	Nickel plating
1	Brass $\triangle$	Nickel plating	6	Brass $\triangle$	Nickel plating
NO.	MATERIAL	FINISH . REMARKS	NO.	MATERIAL	FINISH . REMARKS

UNITS mm		SCALE 1 : 1	COUNT $\triangle$ 6	DESCRIPTION OF REVISIONS DIS-C-00007408	DESIGNED TY. SUZUKI	CHECKED HY. KOBAYASHI	DATE 20210802
<b>HRS</b> HIROSE ELECTRIC CO., LTD. APPROVED : HY. KOBAYASHI 20151210 CHECKED : HY. KOBAYASHI 20151210 DESIGNED : KN. IKEHARA 20151210 DRAWN : KN. IKEHARA 20151210				DRAWING NO. EDC-003901-81-00 PART NO. RM24TP-31S(81) CODE NO. CL0109-0481-6-81 $\triangle$ 1/1			

## X-ON Electronics

Largest Supplier of Electrical and Electronic Components

*Click to view similar products for [Standard Circular Connector](#) category:*

*Click to view products by [Hirose](#) manufacturer:*

Other Similar products are found below :

[5M2530B10P](#) [600259N006](#) [600273N007](#) [6134-336-13149](#) [6134-337-11149](#) [6134-337-2390](#) [6134-341-17149](#) [6280-4SG-516](#) [6280-7SG-3DC](#)  
[6290](#) [6291A](#) [66200A-10](#) [680-SMG](#) [681-PMG](#) [CXS3102A14S2P](#) [CXS3102A181S](#) [7251-6SG-300](#) [7271-6SG-300](#) [7282-3PG-300-CH3](#) [75-](#)  
[474014-05S](#) [75-474618-01S](#) [75-474618-04S](#) [799539-000](#) [MI8-SE](#) [805-005-07NF11-19PC](#) [805-005-07NF15-7PA](#) [8280-4PG-516](#) [8280-7PG-](#)  
[519](#) [8282-5PG-519](#) [836783-1](#) [MP-4102-25P-C](#) [862256-1](#) [864019-2](#) [866857-1](#) [867865-1](#) [PT01SP-14-18P](#) [PT08P-14-5S](#) [PTSF06SE-14-12S](#)  
[120-1833-000](#) [QCM019PC2DC012B](#) [1-2069279-1](#) [121583-0217](#) [121667-0020](#) [129591AU](#) [1000B BULK](#) [RD10A16-19-P6CS051/1](#)  
[RD10A20-31-P8CS051/1](#) [RD16A14-12-S6CS051/2](#) [1301240290](#) [1301240347](#) [1301860202](#)