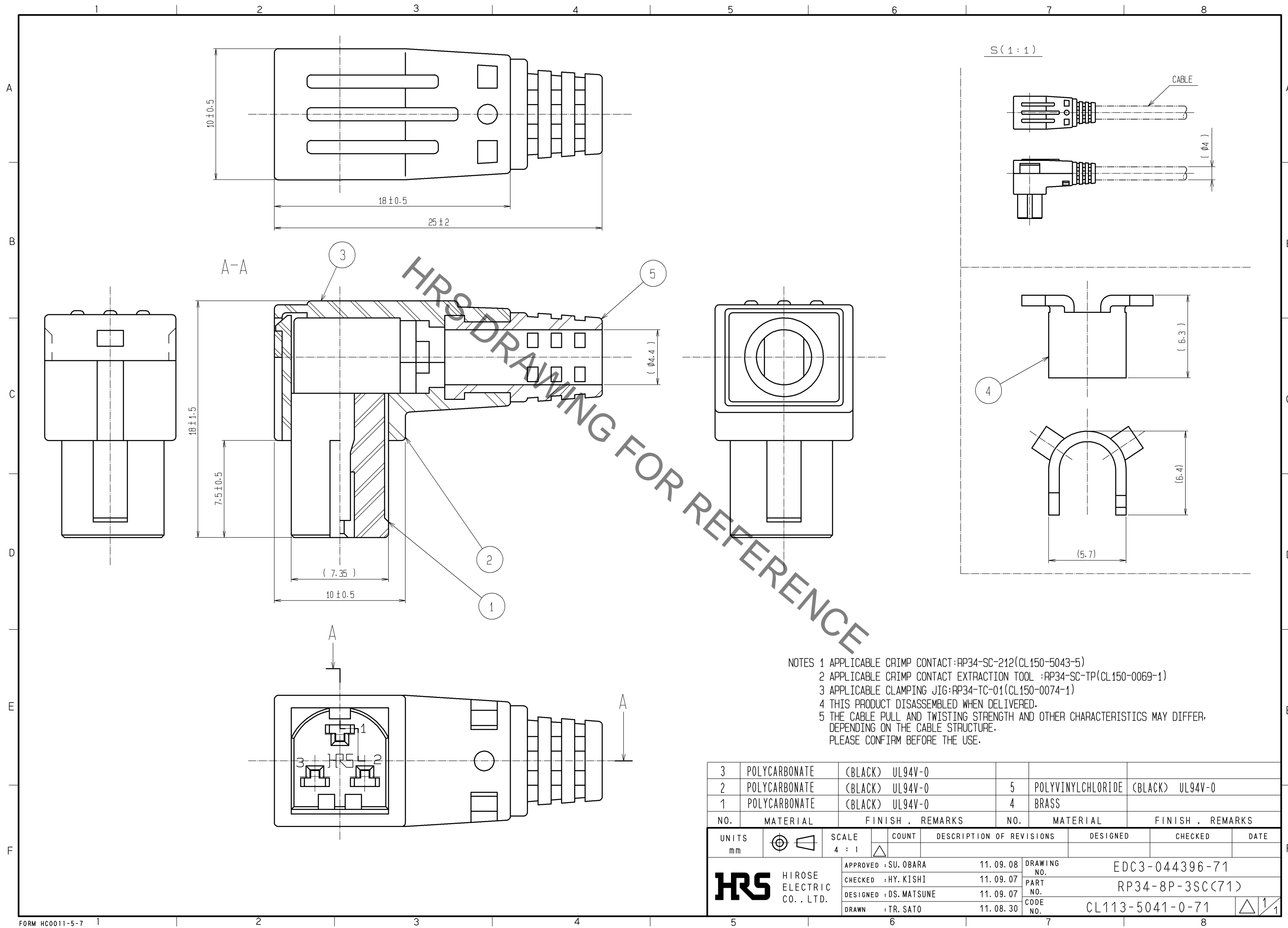


Sep.1.2021 Copyright 2021 HIROSE ELECTRIC CO., LTD. All Rights Reserved.
In case of consideration for using Automotive equipment / device which demand high reliability, kindly contact our sales window correspondents.



NOTES 1 APPLICABLE CRIMP CONTACT:RP34-SC-212(CL150-5043-5)
 2 APPLICABLE CRIMP CONTACT EXTRACTION TOOL :RP34-SC-TP(CL150-0069-1)
 3 APPLICABLE CLAMPING JIG:RP34-TC-01(CL150-0074-1)
 4 THIS PRODUCT DISASSEMBLED WHEN DELIVERED.
 5 THE CABLE PULL AND TWISTING STRENGTH AND OTHER CHARACTERISTICS MAY DIFFER, DEPENDING ON THE CABLE STRUCTURE. PLEASE CONFIRM BEFORE THE USE.

3	POLYCARBONATE	(BLACK) UL94V-0						
2	POLYCARBONATE	(BLACK) UL94V-0	5	POLYVINYLCHLORIDE	(BLACK) UL94V-0			
1	POLYCARBONATE	(BLACK) UL94V-0	4	BRASS				
NO.	MATERIAL	FINISH . REMARKS	NO.	MATERIAL	FINISH . REMARKS			
UNITS	mm	SCALE	4 : 1	COUNT	DESCRIPTION OF REVISIONS	DESIGNED	CHECKED	DATE
HRS		HIROSE ELECTRIC CO., LTD.	APPROVED : SU. OBARA	11.09.08	DRAWING NO.	EDC3-044396-71		
			CHECKED : HY. KISHI	11.09.07	PART NO.	RP34-8P-3SC(71)		
			DESIGNED : DS. MATSUNE	11.09.07	CODE NO.	CL113-5041-0-71		
			DRAWN : TR. SATO	11.08.30		1/1		

X-ON Electronics

Largest Supplier of Electrical and Electronic Components

Click to view similar products for [AC Power Plugs & Receptacles](#) category:

Click to view products by [Hirose](#) manufacturer:

Other Similar products are found below :

[739W-X2/03-BACK1](#) [85447L](#) [1301460003](#) [1301520016](#) [1301520008](#) [14W07](#) [15W07](#) [22806](#) [929662-1](#) [27W75](#) [27W81](#) [962160-1](#)
[29W08MB](#) [29W82](#) [26W](#) [27W47](#) [27W48](#) [28W](#) [28W81](#) [29W47MB](#) [HDR-E14FG1+](#) [30-9717-25](#) [43305](#) [85266](#) [5262DW](#) [22801](#) [22804](#)
[25W47](#) [701W-15/06](#) [701W-20/27](#) [26W75](#) [27T76](#) [29T48](#) [739W-20/XX](#) [1301860536](#) [1301520018](#) [1301520021](#) [1301520020](#) [8210GY](#)
[29W48](#) [3011-06](#) [A52S22A](#) [739W-X2/XX3](#) [26T49](#) [2707](#) [26W47-W](#) [1301450073](#) [RECWALLBOXBA](#) [1301490033](#) [1301490032](#)