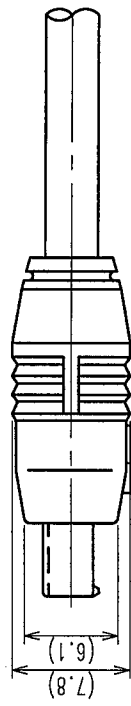
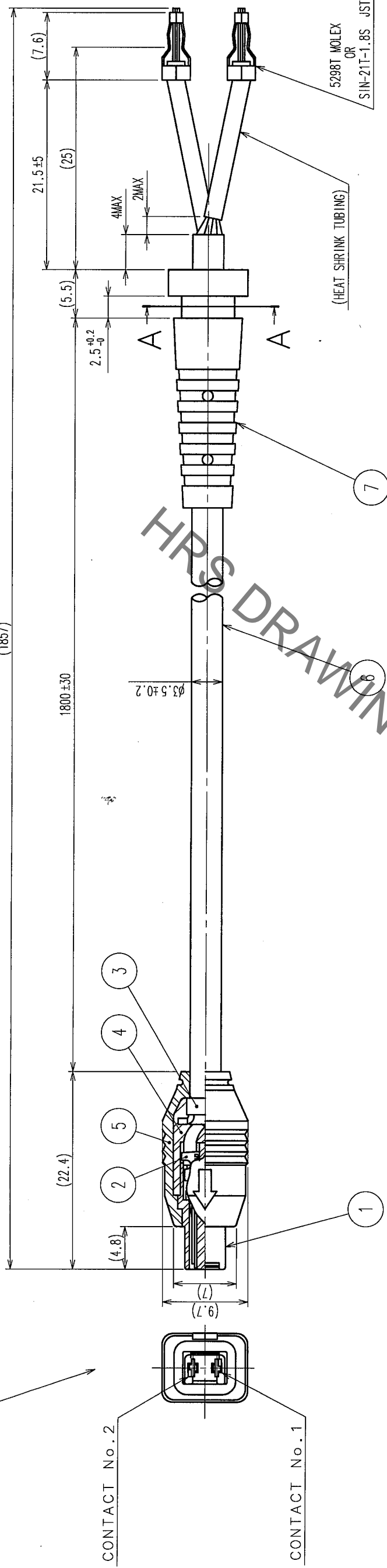


COUNT	DESCRIPTION OF REVISIONS	BY	CHKD	DATE	COUNT	DESCRIPTION OF REVISIONS	BY	CHKD	DATE
△					△				
△					△				
△					△				



RP34L CONNECTOR

(1857)



CONTACT No.2

CONTACT No.1

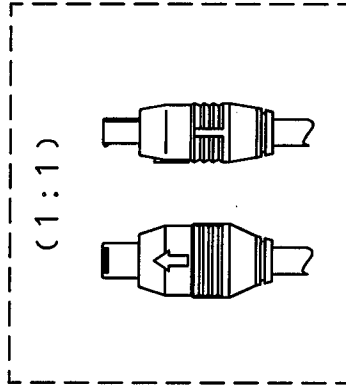
TABLE-2 COMPOSITION TABLE

CONDUCTOR	COMPOSITION	SHIELD	CABLE / CONDUCTOR
	AWG # SIZE		#18
	COMPOSITION		φ 0.16/41
	MATERIAL		COPPER WIRE
PVC	COLOR		WHITE
INSULATION	OUTER DIA.		φ 2.1±0.15
WRAPPED AROUND	AWG # SIZE		#18
SHIELD	COMPOSITION		φ 0.12/78
	MATERIAL		COPPER WIRE
JACKET	OUTER DIA.		φ 3.5±0.2
	MATERIAL		PVC
	COLOR		BLACK

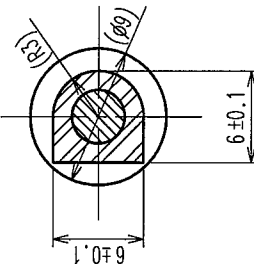
TABLE-1 WIRING TABLE

RP34L CONNECTOR CONTACT No.	INSULATION COLOR
1	WHITE
2	WRAPPED AROUND SHIELD

- NOTES.
- 1 WIRING IS IN ACCORDANCE WITH TABLE-1.
  - 2 CABLE COMPOSITION IS IN ACCORDANCE WITH TABLE-2.
  - 3 PACKING IS IN ACCORDANCE WITH FIG-1.
  - 4 ROTATION EXAMPLES OF REF. NO. ○ AND NO. ◇ ARE SHOWN.



A-A



VINYL-TIES

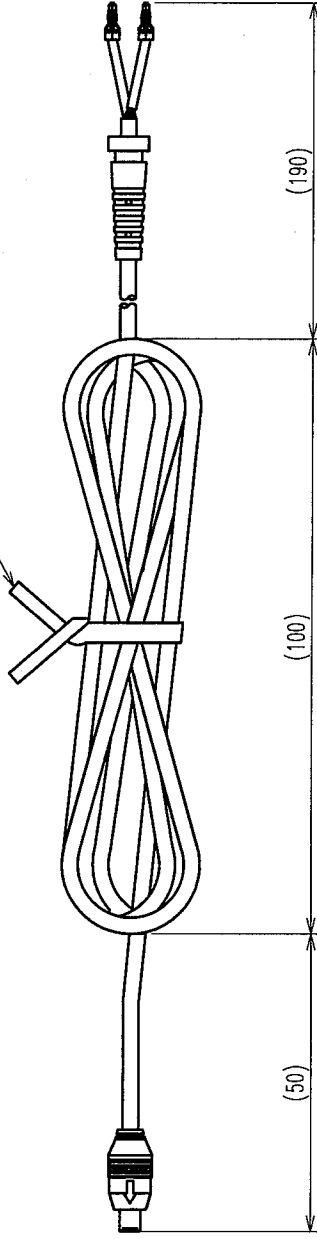


FIG-1 DRAWING FOR PACKING(S:FREE)

3	BRASS			7	POLYVINYLCHLORIDE (BLACK)	UL94V-0			
2	PHOSPHOR BRONZE	SILVER PLATING	2μm min.	6	CABLE WITH BUSHING AND BOARD IN CRIMP CONTACT				
1	POLYAMIDE (BLACK)	UL94HB		5	POLYVINYLCHLORIDE (BLACK)	UL94V-0			
NO.	MATERIAL	FINISH, REMARKS		4	POLYPROPYLENE (MILKY-WHITE)	UL94V-0			
CODE NO. (COLD)	DRAWN	DESIGNED	CHECKED	APPROVED	RELEASED				
	E. Yumino	G. Yamada	T. Miyama	M. Sato					
	06.01.23	06.01.23	06.01.23	06.01.23					
DRAWING NO.	PART NO.								
EDC3-111441-71	RP34L-5PA-2SC(1857)(71)								
SCALE	CODE NO.								
2 : 1	CL113-5153-3-71								
UNITS									
mm									

TO	
AMC	

## X-ON Electronics

Largest Supplier of Electrical and Electronic Components

*Click to view similar products for [AC Power Leads](#) category:*

*Click to view products by [Hirose](#) manufacturer:*

Other Similar products are found below :

[62500-1774](#) [1300000023](#) [312033-01](#) [YP-61+YC12](#) [P28818-M2](#) [YP21A+YC13](#) [FTP-629Y603](#) [1702002600](#) [1700001947](#) [J2014004L001-CC](#)  
[SHELF](#) [IL13-EU1-H05-3100-300-S](#) [P28976-M45](#) [BB-3271V86](#) [W-98452](#) [W-98453](#) [MWOC-PCA-3-3-2](#) [P29844-M5](#) [P29844-M10](#) [W-](#)  
[99245](#) [W-99246](#) [W-99249](#) [W-99251](#) [W-99252](#) [W-99253](#) [W-99254](#) [W-99257](#) [W-99260](#) [W-99262](#) [W-99265](#) [W-99267](#) [W-99269](#) [W-99270](#)  
[W-99272](#) [W-99280](#) [W-99282](#) [S144720002](#) [S002020062](#) [S007220315](#) [S007220344](#) [S007220303](#) [S007220307](#) [P28818-M6](#) [1019123](#)  
[387005324](#) [387005325](#) [59903000000](#) [VL-0136-14-200](#) [387007040](#) [387006822](#) [AC06C13EU](#)