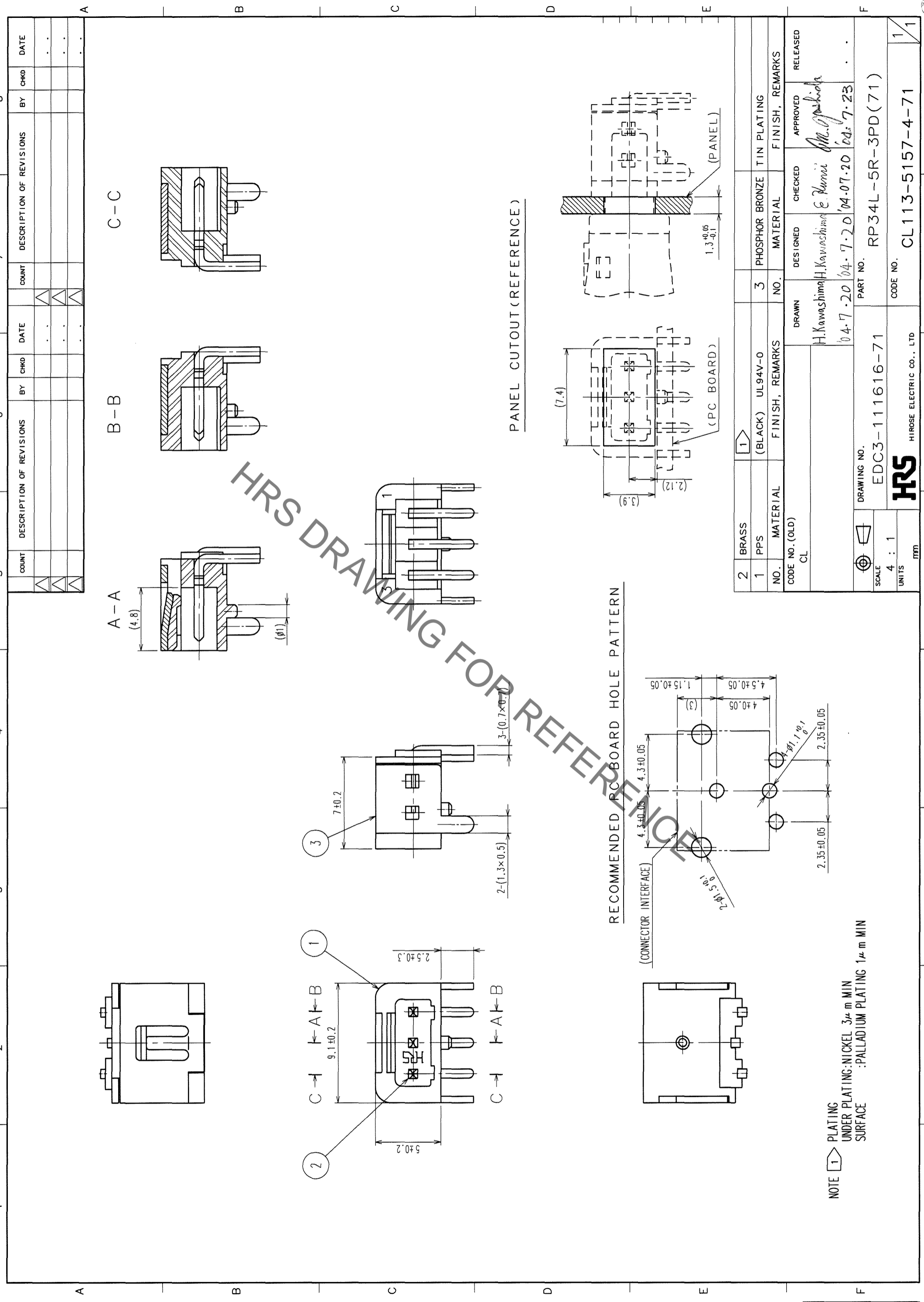


Aug.1.2021 Copyright 2021 HIROSE ELECTRIC CO., LTD. All Rights Reserved. In case of consideration for using Automotive equipment / device which demand high reliability, kindly contact our sales window correspondents.



TO	
R	

NOTE 1  
 PLATING UNDER PLATING-NICKEL  $3\mu\text{m}$  MIN SURFACE  
 :PALLADIUM PLATING  $1\mu\text{m}$  MIN

COUNT	DESCRIPTION OF REVISIONS	BY	CHKD	DATE	COUNT	DESCRIPTION OF REVISIONS	BY	CHKD	DATE

2	BRASS														
1	PPS	(BLACK)	UL94V-0												
NO.	MATERIAL	FINISH, REMARKS			NO.	MATERIAL									
	CL														
DRAWN				DESIGNED				CHECKED				APPROVED			
H. Kawashima				H. Kawashima				E. Kuni				M. Ishida			
04.7.20				04.7.20				04.07.20				04.7.23			
DRAWING NO.			EDC3-111616-71			PART NO.			RP34L-5R-3PD(71)						
SCALE			4 : 1			CODE NO.			CL113-5157-4-71						
UNITS			mm			DRAWING NO.			EDC3-111616-71						
						HRS			HIROSE ELECTRIC CO., LTD						

PANEL CUTOUT (REFERENCE)

RECOMMENDED PCB BOARD HOLE PATTERN

## X-ON Electronics

Largest Supplier of Electrical and Electronic Components

*Click to view similar products for [AC Power Plugs & Receptacles](#) category:*

*Click to view products by [Hirose](#) manufacturer:*

Other Similar products are found below :

[739W-X2/03-BACK1](#) [85447L](#) [1301460003](#) [1301520016](#) [1301520008](#) [14W07](#) [15W07](#) [22806](#) [929662-1](#) [27W75](#) [27W81](#) [962160-1](#)  
[29W08MB](#) [29W82](#) [26W](#) [27W47](#) [27W48](#) [28W](#) [28W81](#) [29W47MB](#) [HDR-E14FG1+](#) [30-9717-25](#) [43305](#) [85266](#) [5262DW](#) [22801](#) [22804](#)  
[25W47](#) [701W-15/06](#) [701W-20/27](#) [26W75](#) [27T76](#) [29T48](#) [739W-20/XX](#) [1301860536](#) [1301520018](#) [1301520021](#) [1301520020](#) [8210GY](#)  
[29W48](#) [3011-06](#) [A52S22A](#) [739W-X2/XX3](#) [26T49](#) [2707](#) [26W47-W](#) [1301450073](#) [RECWALLBOXBA](#) [1301490033](#) [1301490032](#)