

Sep.1.2021 Copyright 2021 HIROSE ELECTRIC CO., LTD. All Rights Reserved.
In case of consideration for using Automotive equipment / device which demand high reliability, kindly contact our sales window correspondents.

1 2 3 4 5 6 7 8

A

B

C

D

E

F

A

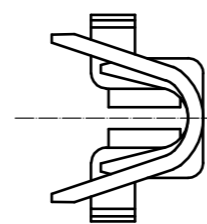
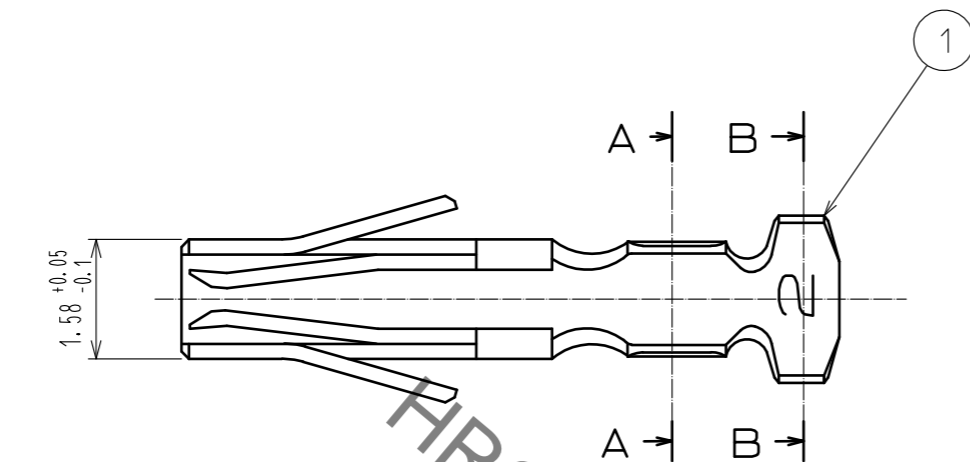
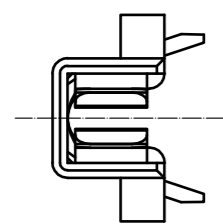
B

C

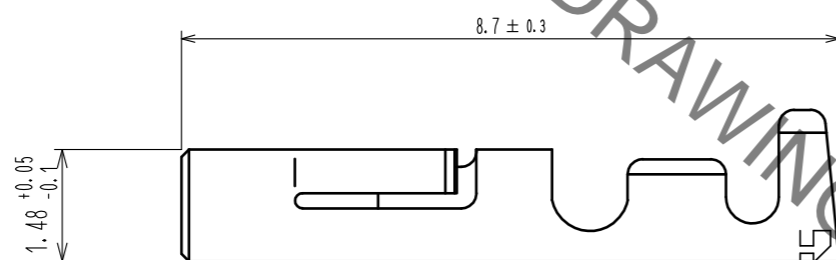
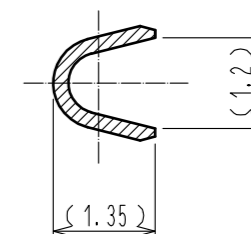
D

E

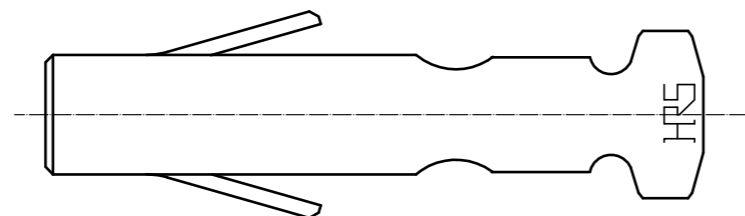
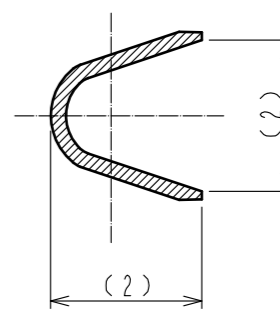
F



A-A



B-B



HRS DRAWING FOR REFERENCE

- Notes 1 Applicable wire : AWG#24 TO 28(Wire jacket diameter ϕ 1.5 Max.)
2 Applicable hand crimping tool:RP34-TA2428HC

1	Phosphor bronze	Silver plating (100pcs/bag)			
NO.	MATERIAL	FINISH . REMARKS	NO.	MATERIAL	FINISH . REMARKS
UNITS mm			SCALE 10 : 1		COUNT
			DESCRIPTION OF REVISIONS		DESIGNED
					CHECKED
					DATE
HRS HIROSE ELECTRIC CO., LTD.			APPROVED : EJ. KUNII	16.02.25	DRAWING NO. EDC-110285-00-00
			CHECKED : EJ. KUNII	16.02.25	PART NO. RP34-SC-122
			DESIGNED : MM. ISHII	16.02.24	CODE NO. CL113-5102-2-00
			DRAWN : MM. ISHII	16.02.24	

X-ON Electronics

Largest Supplier of Electrical and Electronic Components

Click to view similar products for [AC Power Plugs & Receptacles](#) category:

Click to view products by [Hirose](#) manufacturer:

Other Similar products are found below :

[739W-X2/03-BACK1](#) [85447L](#) [1301460003](#) [1301520016](#) [1301520008](#) [14W07](#) [15W07](#) [22806](#) [929662-1](#) [27W75](#) [27W81](#) [962160-1](#)
[29W08MB](#) [29W82](#) [26W](#) [27W47](#) [27W48](#) [28W](#) [28W81](#) [29W47MB](#) [HDR-E14FG1+](#) [30-9717-25](#) [43305](#) [85266](#) [5262DW](#) [22801](#) [22804](#)
[25W47](#) [701W-15/06](#) [701W-20/27](#) [26W75](#) [27T76](#) [29T48](#) [739W-20/XX](#) [1301860536](#) [1301520018](#) [1301520021](#) [1301520020](#) [8210GY](#)
[29W48](#) [3011-06](#) [A52S22A](#) [739W-X2/XX3](#) [26T49](#) [2707](#) [26W47-W](#) [1301450073](#) [RECWALLBOXBA](#) [1301490033](#) [1301490032](#)