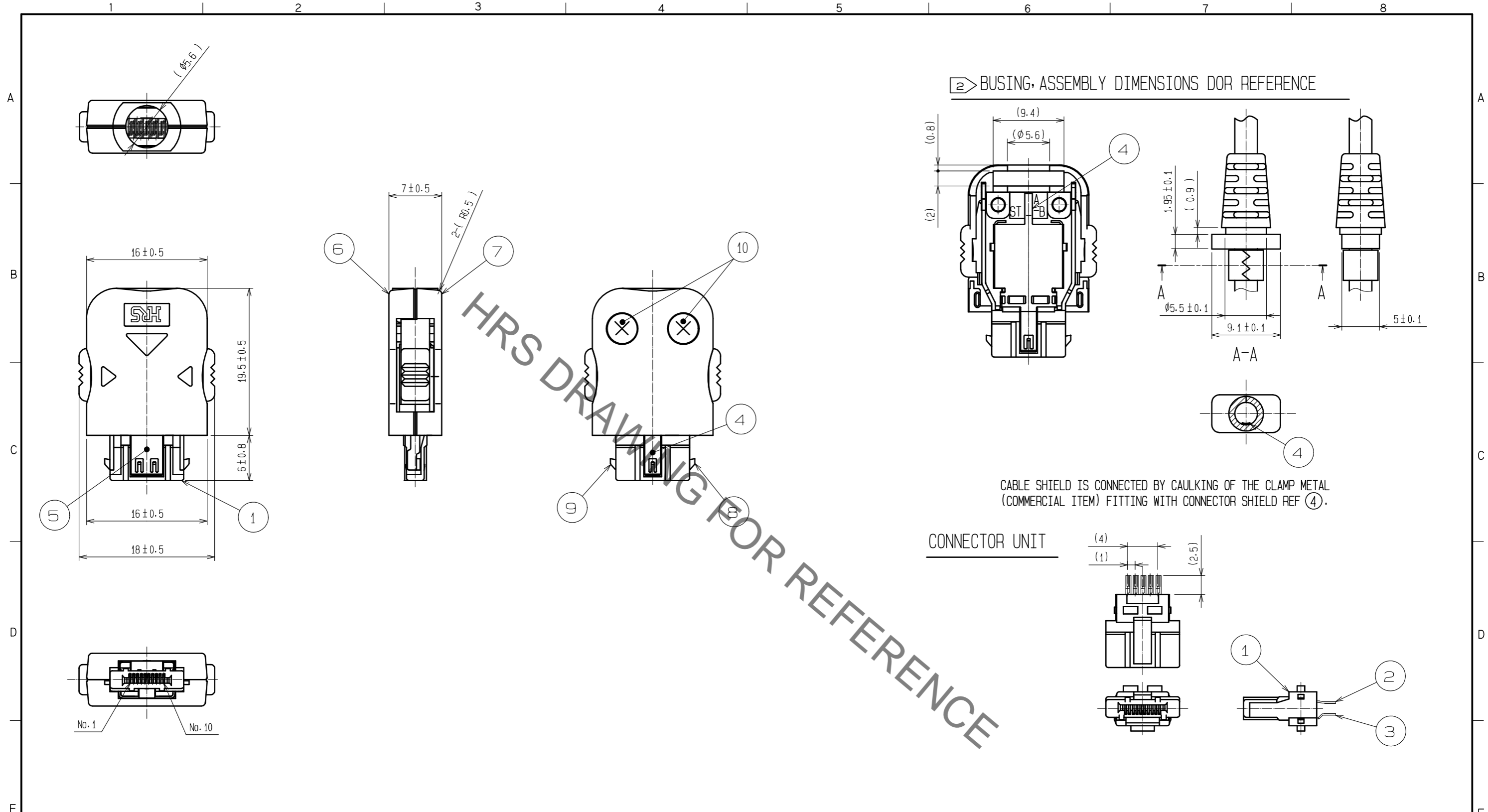


Sep.1.2021 Copyright 2021 HIROSE ELECTRIC CO., LTD. All Rights Reserved.
In case of consideration for using Automotive equipment / device which demand high reliability, kindly contact our sales window correspondents.



NOTE 1 LESS THAN $\phi 4$ mm IS PRESUMED CABLE SIZE.
 2 CABLE SHALL BE OVERMOLDED WITH BUSHING TO FIX.
 USE NON-MIGRATION RESIN FOR OVERMOLDING.
 3 <PLATING>
 CONTACT AREA:GOLD PLATED 0.2 μ m MIN.
 LEAD AREA:GOLD PLATED FLASH.
 UNDER PLATING:NICKEL PLATED 2 μ m MIN.
 THE PRODUCT IS DELIVERED IN FOLLOWING VONDITIONS:UNIT WITH REF 2 AND 3
 ASSEMBLED TO REF 1. COVER WITH REF 8 AND 9 ASSEMBLED TO REF 6. AND
 REF 4, 5, 7, 10 DISASSEMBLED.

CABLE SHIELD IS CONNECTED BY CAULKING OF THE CLAMP METAL
 (COMMERCIAL ITEM) FITTING WITH CONNECTOR SHIELD REF 4.

NO.	MATERIAL	FINISH	REMARKS	NO.	MATERIAL	FINISH	REMARKS
5	STAINLESS STEEL			10	STEEL		TAPPING SCREW COLOR:BLACK (TRIVALENT BLACK CHROMATE)
4	STAINLESS STEEL			9	STAINLESS STEEL		
3	COPPER ALLOY	3		8	STAINLESS STEEL		
2	COPPER ALLOY	3		7	PC		(BLACK)UL94V-0
1	PA		(BLACK)UL94V-0	6	PC		(BLACK)UL94V-0

UNITS	SCALE	COUNT	DESCRIPTION OF REVISIONS	DESIGNED	CHECKED	DATE
mm	2 : 1	1				
APPROVED : NM. NISHIMATSU			15.10.27	DRAWING NO. EDC-124278-30-00		
CHECKED : KN. ICHIKAWA			15.10.27	PART NO. ST40X-10S-CVR(30)		
DESIGNED : TS. ITO			15.10.27	CODE NO. CL241-0029-4-30		
DRAWN : AK. AKIYAMA			15.10.27	1/1		

X-ON Electronics

Largest Supplier of Electrical and Electronic Components

Click to view similar products for [I/O Connectors](#) category:

Click to view products by [Hirose](#) manufacturer:

Other Similar products are found below :

[571763P](#) [58098-0628](#) [72.250.1628.2](#) [72.250.2428.2](#) [74720-0505](#) [76.350.0729.0](#) [76871-1403](#) [FCN-244F080-G/1](#) [FCN-260A9920](#) [PCR-E36PM](#) [PCS-XE26MA+](#) [G38A71314B](#) [1571250010](#) [157-22500-3](#) [MS3471L14-19P L/C](#) [192991-0703](#) [172501-4002](#) [172501-6002](#) [FCN-260C008-A/L0](#) [FCN-260C024-AL0](#) [FCN-261Z008](#) [2000314-1](#) [200331-1](#) [PCR-E36FC+](#) [PCS-E28FS+](#) [PCS-XE26SLFD+](#) [PCS-XE26SLFDT+](#) [G730VID08BDC24](#) [U90B2054081210](#) [UE86K842720321](#) [38113800006](#) [DP3AR020WQ1R200](#) [Z4.102.0680.0](#) [500-1040](#) [500-1052](#) [500-1054](#) [ZP-4008-66L](#) [0709821002](#) [DX40-20P\(55\)](#) [5554841-1](#) [MS3474W18-8P-LC*](#) [SM3106F14S-7S-LC](#) [U90B3054061110](#) [U65-E04-4020](#) [ZPF000000000097891](#) [557-262M2-06C](#) [747360449](#) [10099439-003C-TRLF](#) [10137239-0021LF](#) [E9320-001-01](#)