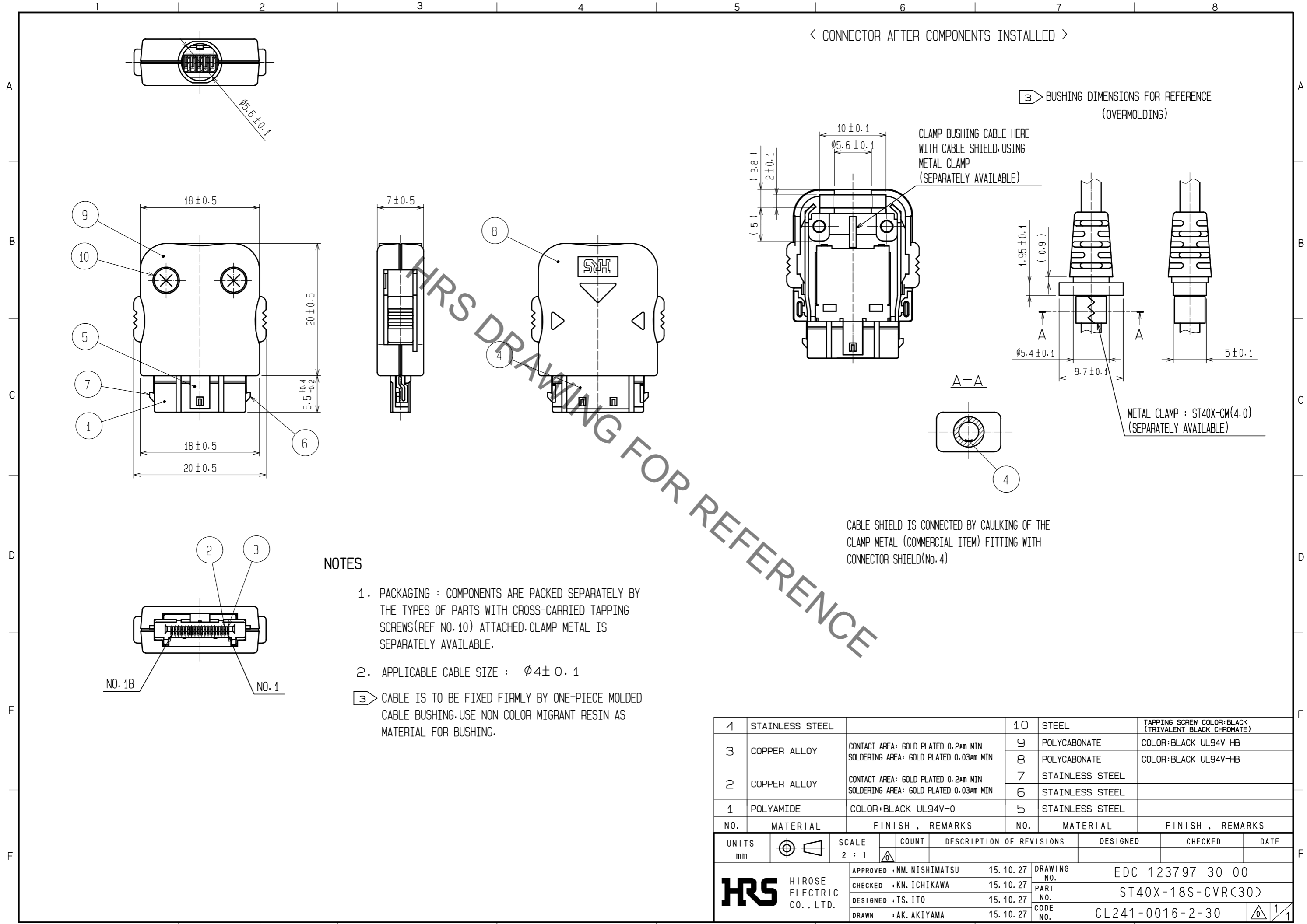


Sep.1.2021 Copyright 2021 HIROSE ELECTRIC CO., LTD. All Rights Reserved.
In case of consideration for using Automotive equipment / device which demand high reliability, kindly contact our sales window correspondents.



NOTES

1. PACKAGING : COMPONENTS ARE PACKED SEPARATELY BY THE TYPES OF PARTS WITH CROSS-CARRIED TAPPING SCREWS(REF NO. 10) ATTACHED. CLAMP METAL IS SEPARATELY AVAILABLE.
2. APPLICABLE CABLE SIZE : $\phi 4 \pm 0.1$
3. CABLE IS TO BE FIXED FIRMLY BY ONE-PIECE MOLDED CABLE BUSHING. USE NON COLOR MIGRANT RESIN AS MATERIAL FOR BUSHING.

NO.	MATERIAL	FINISH .	REMARKS	NO.	MATERIAL	FINISH .	REMARKS
4	STAINLESS STEEL			10	STEEL		TAPPING SCREW COLOR:BLACK (TRIVALENT BLACK CHROMATE)
3	COPPER ALLOY	CONTACT AREA: GOLD PLATED 0.2µm MIN SOLDERING AREA: GOLD PLATED 0.03µm MIN		9	POLYCARBONATE		COLOR:BLACK UL94V-HB
				8	POLYCARBONATE		COLOR:BLACK UL94V-HB
2	COPPER ALLOY	CONTACT AREA: GOLD PLATED 0.2µm MIN SOLDERING AREA: GOLD PLATED 0.03µm MIN		7	STAINLESS STEEL		
				6	STAINLESS STEEL		
1	POLYAMIDE	COLOR:BLACK UL94V-0		5	STAINLESS STEEL		

UNITS	SCALE	COUNT	DESCRIPTION OF REVISIONS	DESIGNED	CHECKED	DATE
mm	2 : 1	△				
APPROVED : NM. NISHIMATSU			15.10.27	DRAWING NO. EDC-123797-30-00		
CHECKED : KN. ICHIKAWA			15.10.27	PART NO. ST40X-18S-CVR(30)		
DESIGNED : TS. ITO			15.10.27	CODE NO. CL241-0016-2-30		
DRAWN : AK. AKIYAMA			15.10.27	1/1		

X-ON Electronics

Largest Supplier of Electrical and Electronic Components

Click to view similar products for [I/O Connectors](#) category:

Click to view products by [Hirose](#) manufacturer:

Other Similar products are found below :

[571763P](#) [58098-0628](#) [72.250.1628.2](#) [72.250.2428.2](#) [74720-0505](#) [76.350.0729.0](#) [76871-1403](#) [FCN-244F080-G/1](#) [FCN-260A9920](#) [PCR-E36PM](#) [PCS-XE26MA+](#) [G38A71314B](#) [1571250010](#) [157-22500-3](#) [MS3471L14-19P L/C](#) [192991-0703](#) [172501-4002](#) [172501-6002](#) [FCN-260C008-A/L0](#) [FCN-260C024-AL0](#) [FCN-261Z008](#) [2000314-1](#) [200331-1](#) [PCR-E36FC+](#) [PCS-E28FS+](#) [PCS-XE26SLFD+](#) [PCS-XE26SLFDT+](#) [G730VID08BDC24](#) [U90B2054081210](#) [UE86K842720321](#) [38113800006](#) [DP3AR020WQ1R200](#) [Z4.102.0680.0](#) [500-1040](#) [500-1052](#) [500-1054](#) [ZP-4008-66L](#) [0709821002](#) [DX40-20P\(55\)](#) [5554841-1](#) [MS3474W18-8P-LC*](#) [SM3106F14S-7S-LC](#) [U90B3054061110](#) [U65-E04-4020](#) [ZPF000000000097891](#) [557-262M2-06C](#) [747360449](#) [10099439-003C-TRLF](#) [10137239-0021LF](#) [E9320-001-01](#)