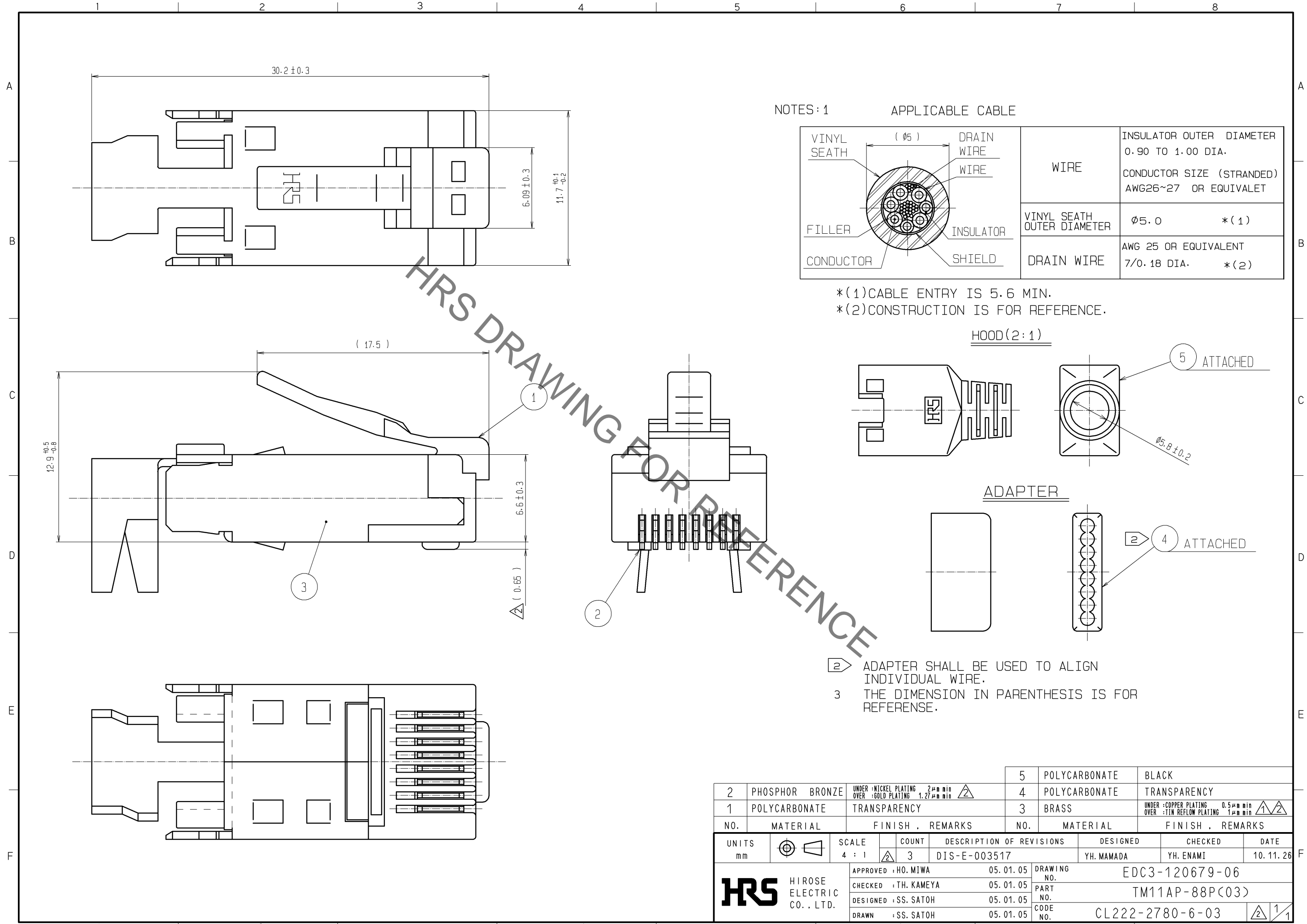


Sep.1.2021 Copyright 2021 HIROSE ELECTRIC CO., LTD. All Rights Reserved.
In case of consideration for using Automotive equipment / device which demand high reliability, kindly contact our sales window correspondents.



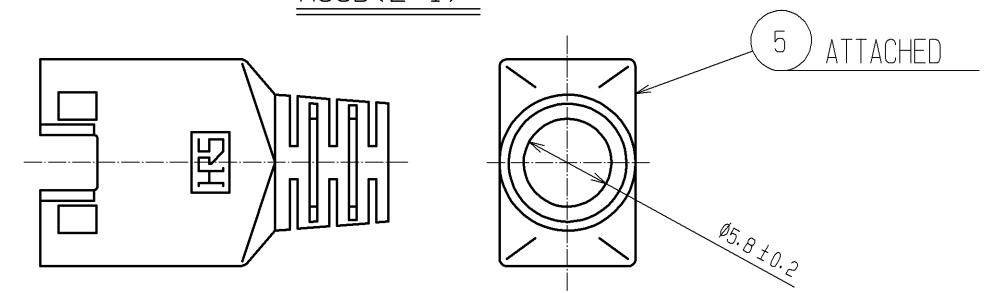
NOTES: 1

APPLICABLE CABLE

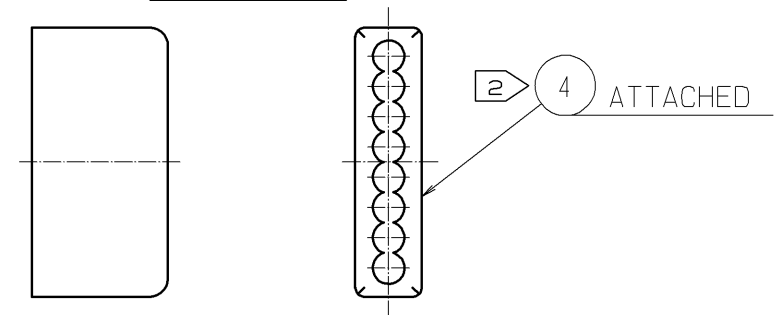
| | | | | | |
|-------------|--------|------------|----------------------------|---------------------------|-----------------------|
| VINYL SEATH | (Ø5) | DRAIN WIRE | WIRE | INSULATOR OUTER DIAMETER | 0.90 TO 1.00 DIA. |
| FILLER | | WIRE | | CONDUCTOR SIZE (STRANDED) | AWG26~27 OR EQUIVALET |
| CONDUCTOR | | INSULATOR | VINYL SEATH OUTER DIAMETER | Ø5.0 | *(1) |
| | | SHIELD | DRAIN WIRE | AWG 25 OR EQUIVALENT | 7/0.18 DIA. *(2) |

*(1)CABLE ENTRY IS 5.6 MIN.
*(2)CONSTRUCTION IS FOR REFERENCE.

HOOD(2:1)



ADAPTER



2 ADAPTER SHALL BE USED TO ALIGN INDIVIDUAL WIRE.
3 THE DIMENSION IN PARENTHESIS IS FOR REFERENCE.

| | | | | | |
|------------------------------|-----------------|--|----------------------------|---------------|---|
| 2 | PHOSPHOR BRONZE | UNDER :NICKEL PLATING 2µm min OVER :GOLD PLATING 1.27µm min | 5 | POLYCARBONATE | BLACK |
| 1 | POLYCARBONATE | TRANSPARENCY | 4 | POLYCARBONATE | TRANSPARENCY |
| | | | 3 | BRASS | UNDER :COPPER PLATING 0.5µm min OVER :TIN REFLOW PLATING 1µm min |
| NO. | MATERIAL | FINISH . REMARKS | NO. | MATERIAL | FINISH . REMARKS |
| UNITS | mm | SCALE | 4 : 1 | COUNT | 3 |
| | | DESCRIPTION OF REVISIONS | | DESIGNED | YH.MAMADA |
| | | DIS-E-003517 | | CHECKED | YH.ENAMI |
| | | DATE | | 10.11.26 | |
| APPROVED : HO.MIWA 05.01.05 | | | DRAWING NO. EDC3-120679-06 | | |
| CHECKED : TH.KAMEYA 05.01.05 | | | PART NO. TM11AP-88P(03) | | |
| DESIGNED : SS.SATO 05.01.05 | | | CODE NO. CL222-2780-6-03 | | |
| DRAWN : SS.SATO 05.01.05 | | | 1/1 | | |

X-ON Electronics

Largest Supplier of Electrical and Electronic Components

Click to view similar products for [Modular Connectors / Ethernet Connectors](#) category:

Click to view products by [Hirose](#) manufacturer:

Other Similar products are found below :

[8949-H88/06BLKA/SN](#) [74441-0010/BKN](#) [MP1010RX-1000](#) [MP44RX-1000](#) [PHJ-4P4C-1-V-4](#) [PHP-6P6C-5](#) [GAX-3-66](#) [GAX-8-62](#) [GDCX-PA-66-50](#) [GDCX-PN-64](#) [GDCX-PN-66](#) [GDCX-PN-66-50](#) [GDLX-A-66](#) [GDLX-N-66](#) [GDLX-S-66](#) [GDLX-S-88K](#) [GDTX-S-88-50](#) [GDX-PA-1010](#) [GLX-N-1010M-BLK](#) [GLX-S-88M-BLK](#) [GMX-N-1010](#) [GMX-S-1010](#) [GMX-S-66](#) [GMX-SMT4-N-88](#) [GPX-2-64](#) [GSGX-N-2-88](#) [GSGX-N-4-88](#) [GSX-NS2-88-3.05](#) [GSX-NS2-88-3.05-50](#) [GSX-NS-88-3.68](#) [PT-108A-8C-UL](#) [PT-J951-8C](#) [PTS-J531-8CS-50UL](#) [1-1775629-2](#) [A-2014-0-4](#) [GWLX-S-88-GR](#) [GWLX-S9-88-YG](#) [DC-1021-8-WH-6](#) [1300530003](#) [1324640-4](#) [RJ11FTVC2G](#) [RJ11FTVC2N](#) [RJFTVX2SA1G](#) [132764-001](#) [1413235](#) [MP88X-1000](#) [MPS88RX-5000](#) [MRJR-5481-0F2](#) [E5288-S000K3-L](#) [E5908-15A242-L](#)