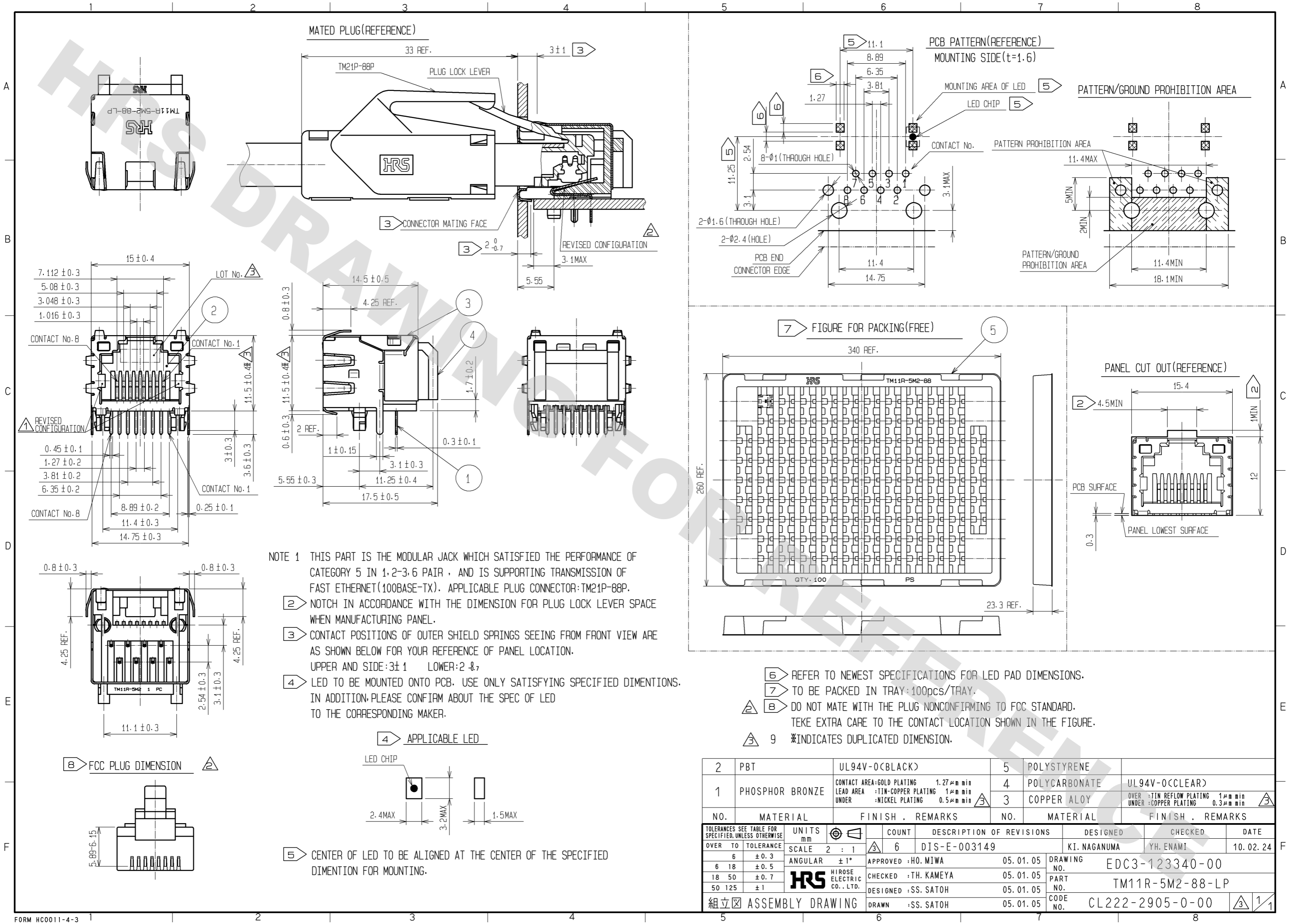


DRAWING FOR REFERENCE: This is subject to change without notice
08/11/2012

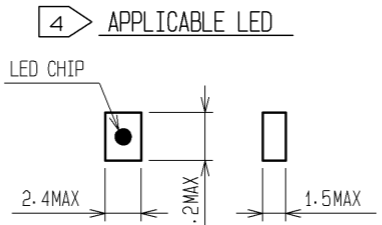


NOTE 1 THIS PART IS THE MODULAR JACK WHICH SATISFIED THE PERFORMANCE OF CATEGORY 5 IN 1,2-3,6 PAIR , AND IS SUPPORTING TRANSMISSION OF FAST ETHERNET(100BASE-TX). APPLICABLE PLUG CONNECTOR:TM21P-88P.

2 NOTCH IN ACCORDANCE WITH THE DIMENSION FOR PLUG LOCK LEVER SPACE WHEN MANUFACTURING PANEL.

3 CONTACT POSITIONS OF OUTER SHIELD SPRINGS SEEING FROM FRONT VIEW ARE AS SHOWN BELOW FOR YOUR REFERENCE OF PANEL LOCATION.
UPPER AND SIDE:3±1 LOWER:2±1

4 LED TO BE MOUNTED ONTO PCB. USE ONLY SATISFYING SPECIFIED DIMINTIONS. IN ADDITION,PLEASE CONFIRM ABOUT THE SPEC OF LED TO THE CORRESPONDING MAKER.



5 CENTER OF LED TO BE ALIGNED AT THE CENTER OF THE SPECIFIED DIMENTION FOR MOUNTING.

- 6 REFER TO NEWEST SPECIFICATIONS FOR LED PAD DIMENSIONS.
- 7 TO BE PACKED IN TRAY:100pcs/TRAY.
- 8 DO NOT MATE WITH THE PLUG NONCONFIRMING TO FCC STANDARD. TEKE EXTRA CARE TO THE CONTACT LOCATION SHOWN IN THE FIGURE.
- 9 *INDICATES DUPLICATED DIMENSION.

2	PBT	UL94V-0(CBLACK)	5	POLYSTYRENE	
1	PHOSPHOR BRONZE	CONTACT AREA:GOLD PLATING 1.27µm min LEAD AREA :TIN-COPPER PLATING 1µm min UNDER :NICKEL PLATING 0.5µm min	4	POLYCARBONATE	
			3	COPPER ALLOY	
NO.	MATERIAL	FINISH . REMARKS	NO.	MATERIAL	FINISH . REMARKS
TOLERANCES SEE TABLE FOR SPECIFIED,UNLESS OTHERWISE		UNITS mm	COUNT		DESCRIPTION OF REVISIONS
OVER	TO	TOLERANCE	SCALE 2 : 1	6	DIS-E-003149
6	±0.3		ANGULAR ±1°	APPROVED :HO. MIWA	05.01.05
6	18	±0.5	HRS HIROSE ELECTRIC CO.,LTD.	CHECKED :TH. KAMEYA	05.01.05
18	50	±0.7		DESIGNED :SS. SATOH	05.01.05
50	125	±1		DRAWN :SS. SATOH	05.01.05
組立 ASSEMBLY DRAWING			DRAWING NO. EDC3-123340-00		DESIGNED KI. NAGANUMA
			PART NO. TM11R-5M2-88-LP		CHECKED YH. ENAMI
			CODE NO. CL222-2905-0-00		DATE 10.02.24

X-ON Electronics

Largest Supplier of Electrical and Electronic Components

Click to view similar products for [Modular Connectors / Ethernet Connectors](#) category:

Click to view products by [Hirose](#) manufacturer:

Other Similar products are found below :

[8949-H88/06BLKA/SN](#) [74441-0010/BKN](#) [MP1010RX-1000](#) [MP44RX-1000](#) [PHJ-4P4C-1-V-4](#) [PHP-6P6C-5](#) [GAX-3-66](#) [GAX-8-62](#) [GDCX-PA-66-50](#) [GDCX-PN-64](#) [GDCX-PN-66](#) [GDCX-PN-66-50](#) [GDLX-A-66](#) [GDLX-N-66](#) [GDLX-S-66](#) [GDLX-S-88K](#) [GDTX-S-88-50](#) [GDX-PA-1010](#) [GLX-N-1010M-BLK](#) [GLX-S-88M-BLK](#) [GMX-N-1010](#) [GMX-S-1010](#) [GMX-S-66](#) [GMX-SMT4-N-88](#) [GPX-2-64](#) [GSGX-N-2-88](#) [GSGX-N-4-88](#) [GSX-NS2-88-3.05](#) [GSX-NS2-88-3.05-50](#) [GSX-NS-88-3.68](#) [PT-108A-8C-UL](#) [PT-J951-8C](#) [PTS-J531-8CS-50UL](#) [1-1775629-2](#) [A-2014-0-4](#) [GWLX-S-88-GR](#) [GWLX-S9-88-YG](#) [DC-1021-8-WH-6](#) [1300530003](#) [1324640-4](#) [RJ11FTVC2G](#) [RJ11FTVC2N](#) [RJFTVX2SA1G](#) [132764-001](#) [1413235](#) [MP88X-1000](#) [MPS88RX-5000](#) [MRJR-5481-0F2](#) [E5288-S000K3-L](#) [E5908-15A242-L](#)