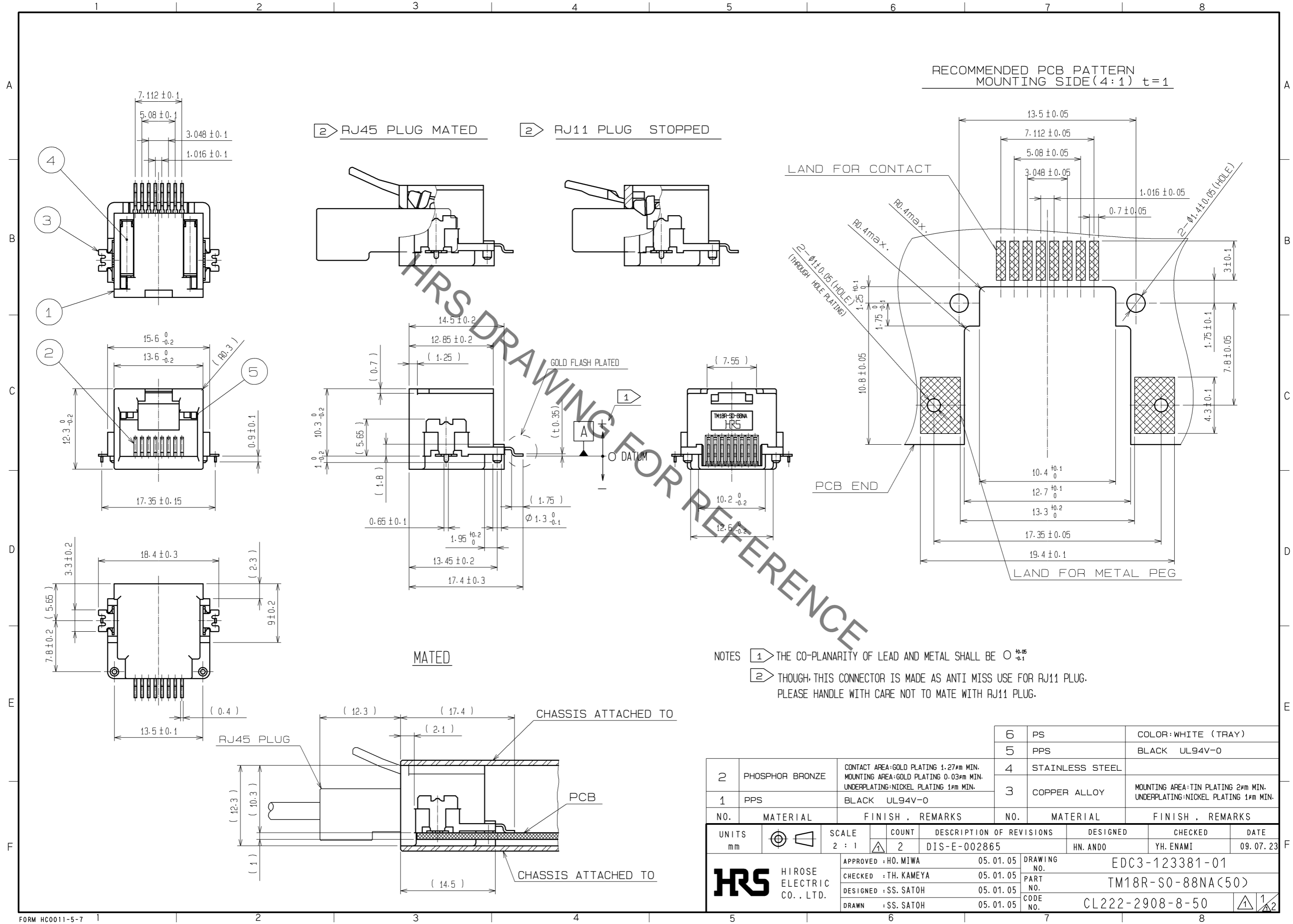


Jan.1.2022 Copyright 2022 HIROSE ELECTRIC CO., LTD. All Rights Reserved.  
 In case of consideration for using Automotive equipment / device which demand high reliability, kindly contact our sales window correspondents.

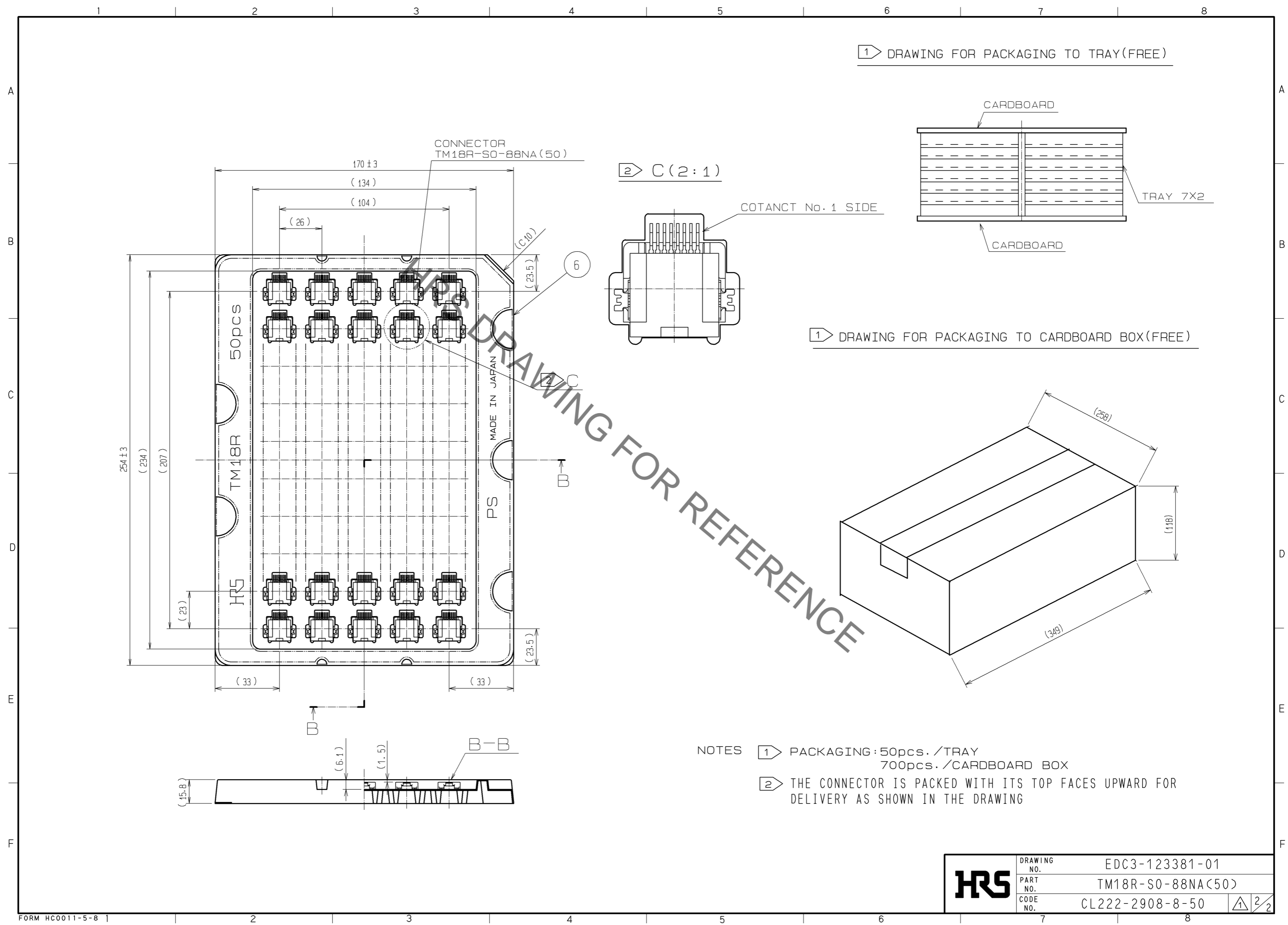


6	PS	COLOR: WHITE (TRAY)
5	PPS	BLACK UL94V-0
4	STAINLESS STEEL	
3	COPPER ALLOY	MOUNTING AREA: TIN PLATING 2μm MIN. UNDERPLATING: NICKEL PLATING 1μm MIN.
2	PHOSPHOR BRONZE	CONTACT AREA: GOLD PLATING 1.27μm MIN. MOUNTING AREA: GOLD PLATING 0.03μm MIN. UNDERPLATING: NICKEL PLATING 1μm MIN.
1	PPS	BLACK UL94V-0

NO.	MATERIAL	FINISH	REMARKS	NO.	MATERIAL	FINISH	REMARKS
6	PS		COLOR: WHITE (TRAY)				
5	PPS		BLACK UL94V-0				
4	STAINLESS STEEL						
3	COPPER ALLOY		MOUNTING AREA: TIN PLATING 2μm MIN. UNDERPLATING: NICKEL PLATING 1μm MIN.				
2	PHOSPHOR BRONZE		CONTACT AREA: GOLD PLATING 1.27μm MIN. MOUNTING AREA: GOLD PLATING 0.03μm MIN. UNDERPLATING: NICKEL PLATING 1μm MIN.				
1	PPS		BLACK UL94V-0				

UNITS	mm	SCALE	2:1	COUNT	2	DESCRIPTION OF REVISIONS	DESIGNED	HN. ANDO	CHECKED	YH. ENAMI	DATE	09.07.23
APPROVED		: HO. MIWA		05.01.05		DRAWING NO.		EDC3-123381-01				
CHECKED		: TH. KAMEYA		05.01.05		PART NO.		TM18R-S0-88NA(50)				
DESIGNED		: SS. SATOH		05.01.05		CODE NO.		CL222-2908-8-50				
DRAWN		: SS. SATOH		05.01.05								

Jan.1.2022 Copyright 2022 HIROSE ELECTRIC CO., LTD. All Rights Reserved.  
 In case of consideration for using Automotive equipment / device which demand high reliability, kindly contact our sales window correspondents.



1 DRAWING FOR PACKAGING TO TRAY(FREE)

2 C (2:1)

1 DRAWING FOR PACKAGING TO CARDBOARD BOX(FREE)

- NOTES
- 1 PACKAGING : 50pcs./TRAY  
700pcs./CARDBOARD BOX
  - 2 THE CONNECTOR IS PACKED WITH ITS TOP FACES UPWARD FOR DELIVERY AS SHOWN IN THE DRAWING

<b>HRS</b>	DRAWING NO.	EDC3-123381-01	2/2
	PART NO.	TM18R-S0-88NA(50)	
	CODE NO.	CL222-2908-8-50	

## X-ON Electronics

Largest Supplier of Electrical and Electronic Components

*Click to view similar products for [Modular Connectors / Ethernet Connectors](#) category:*

*Click to view products by [Hirose](#) manufacturer:*

Other Similar products are found below :

[8949-H88/06BLKA/SN](#) [74441-0010/BKN](#) [MP1010RX-1000](#) [MP44RX-1000](#) [PHP-6P6C-5](#) [GAX-3-66](#) [GAX-8-62](#) [GDCX-PA-66-50](#) [GDCX-PN-64](#) [GDCX-PN-66](#) [GDCX-PN-66-50](#) [GDLX-A-66](#) [GDLX-N-66](#) [GDLX-S-66](#) [GDLX-S-88K](#) [GDTX-S-88-50](#) [GDX-PA-1010](#) [GLX-N-1010M-BLK](#) [GLX-S-88M-BLK](#) [GMX-N-1010](#) [GMX-S-1010](#) [GMX-S-66](#) [GMX-SMT4-N-88](#) [GPX-2-64](#) [GSGX-N-2-88](#) [GSGX-N-4-88](#) [GSX-NS2-88-3.05](#) [GSX-NS2-88-3.05-50](#) [GSX-NS-88-3.05-50](#) [PT-108A-8C-UL](#) [PT-J951-8C](#) [PTS-J531-8CS-50UL](#) [1-1775629-2](#) [A-2014-0-4](#) [GWLX-S-88-GR](#) [GWLX-S9-88-YG](#) [DC-1021-8-WH-6](#) [1300530003](#) [1324640-4](#) [RJ11FTVC2G](#) [RJ11FTVC2N](#) [RJFTVX2SA1G](#) [132764-001](#) [1413235](#) [MP88X-1000](#) [MPS88RX-5000](#) [MRJR-5481-0F2](#) [E5288-S000K3-L](#) [E5908-15A242-L](#) [155302-001](#)