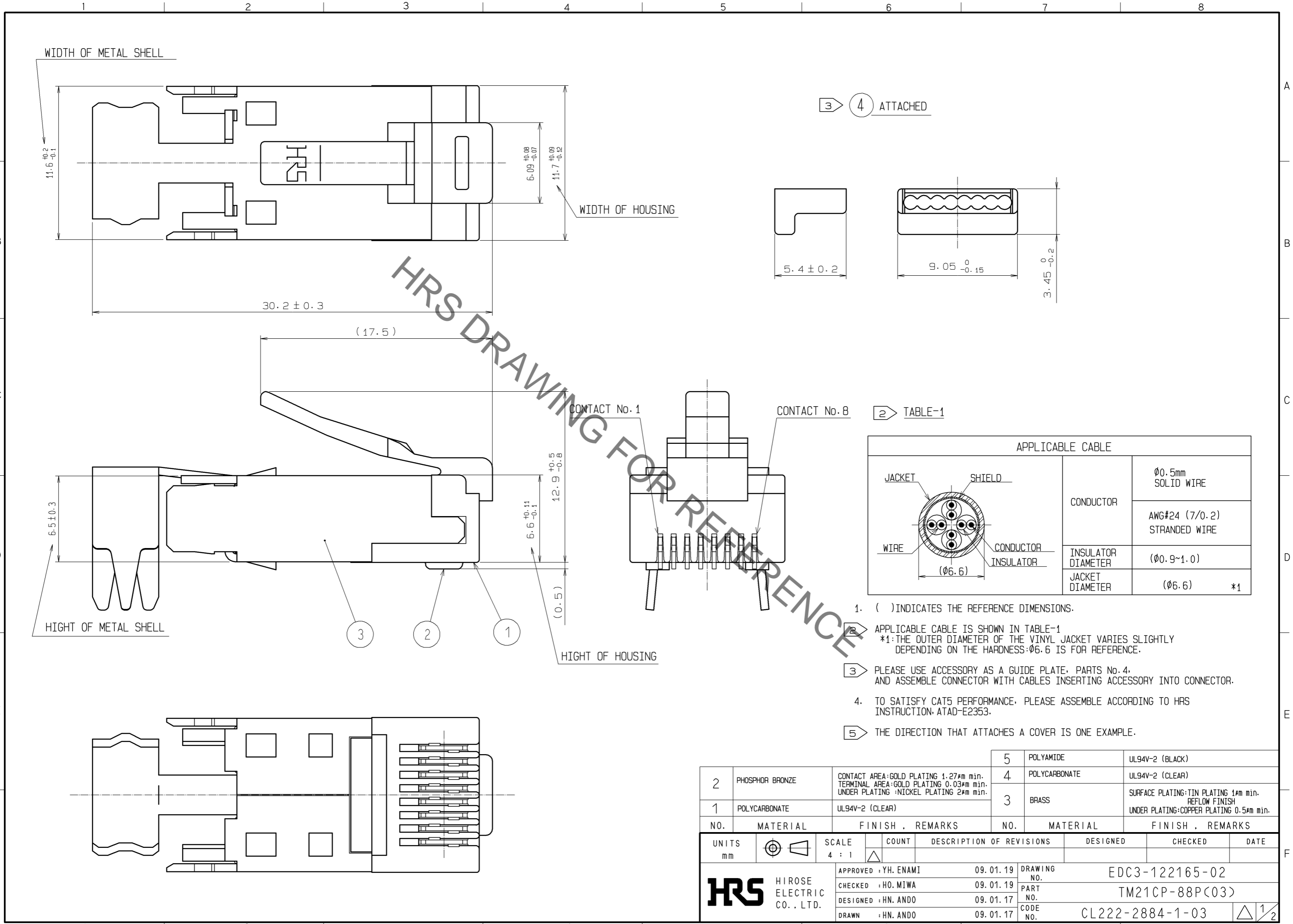


Sep.1.2021 Copyright 2021 HIROSE ELECTRIC CO., LTD. All Rights Reserved.
 In case of consideration for using Automotive equipment / device which demand high reliability, kindly contact our sales window correspondents.



APPLICABLE CABLE		
CONDUCTOR		Ø0.5mm SOLID WIRE
		AWG#24 (7/0.2) STRANDED WIRE
INSULATOR DIAMETER		(Ø0.9~1.0)
JACKET DIAMETER		(Ø6.6) *1

- () INDICATES THE REFERENCE DIMENSIONS.
- APPLICABLE CABLE IS SHOWN IN TABLE-1
*1: THE OUTER DIAMETER OF THE VINYL JACKET VARIES SLIGHTLY DEPENDING ON THE HARDNESS: Ø6.6 IS FOR REFERENCE.
- PLEASE USE ACCESSORY AS A GUIDE PLATE, PARTS No. 4, AND ASSEMBLE CONNECTOR WITH CABLES INSERTING ACCESSORY INTO CONNECTOR.
- TO SATISFY CAT5 PERFORMANCE, PLEASE ASSEMBLE ACCORDING TO HRS INSTRUCTION: ATAD-E2353.
- THE DIRECTION THAT ATTACHES A COVER IS ONE EXAMPLE.

NO.	MATERIAL	FINISH . REMARKS	NO.	MATERIAL	FINISH . REMARKS
2	PHOSPHOR BRONZE	CONTACT AREA: GOLD PLATING 1.27µm min. TERMINAL AREA: GOLD PLATING 0.03µm min. UNDER PLATING : NICKEL PLATING 2µm min.	5	POLYAMIDE	UL94V-2 (BLACK)
1	POLYCARBONATE	UL94V-2 (CLEAR)	4	POLYCARBONATE	UL94V-2 (CLEAR)
			3	BRASS	SURFACE PLATING: TIN PLATING 1µm min. REFLOW FINISH UNDER PLATING: COPPER PLATING 0.5µm min.

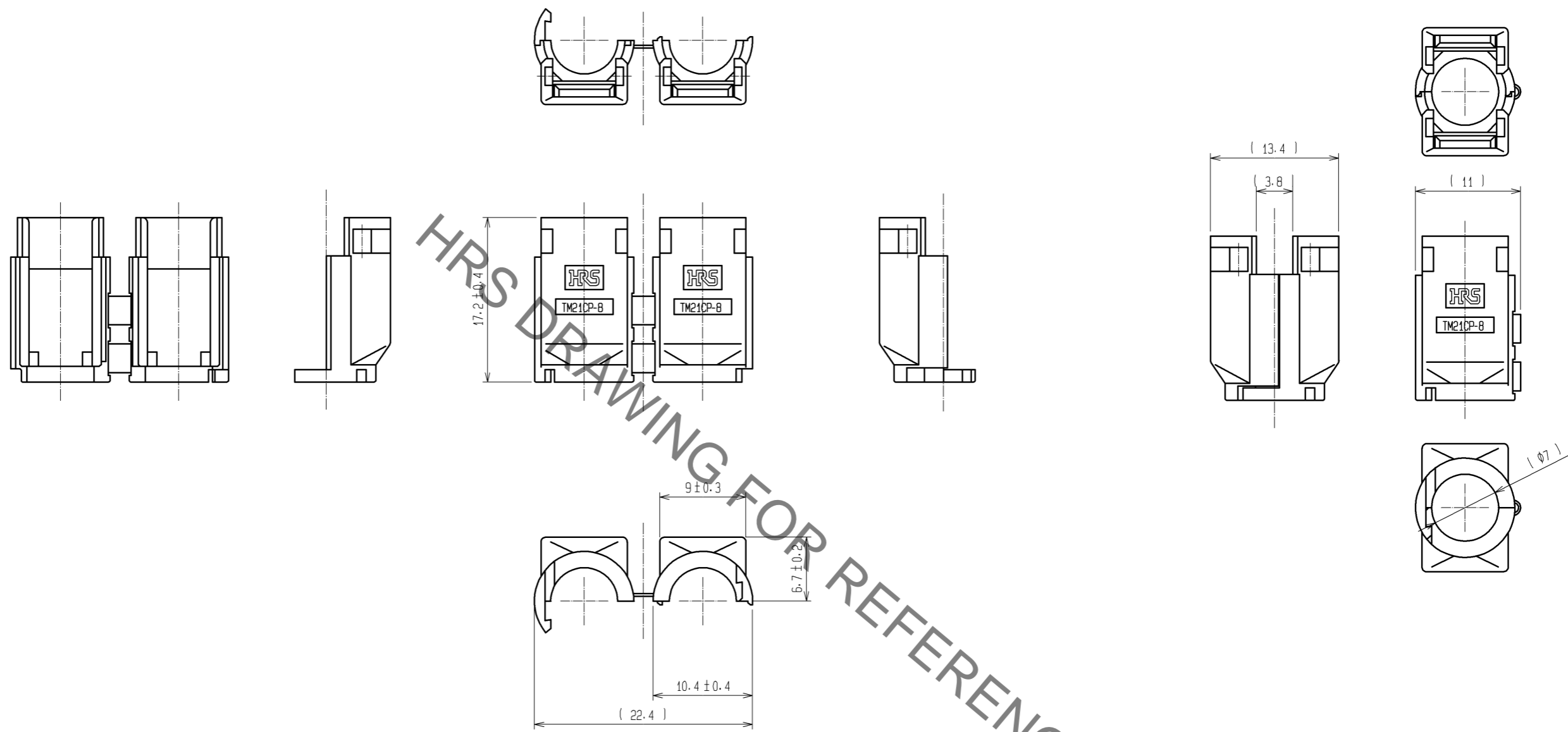
UNITS	SCALE	COUNT	DESCRIPTION OF REVISIONS	DESIGNED	CHECKED	DATE
mm	4 : 1	△	APPROVED : YH. ENAMI 09.01.19			
			CHECKED : HO. MIWA 09.01.19			
			DESIGNED : HN. ANDO 09.01.17			
			DRAWN : HN. ANDO 09.01.17			

DRAWING NO.	EDC3-122165-02
PART NO.	TM21CP-88P(03)
CODE NO.	CL222-2884-1-03

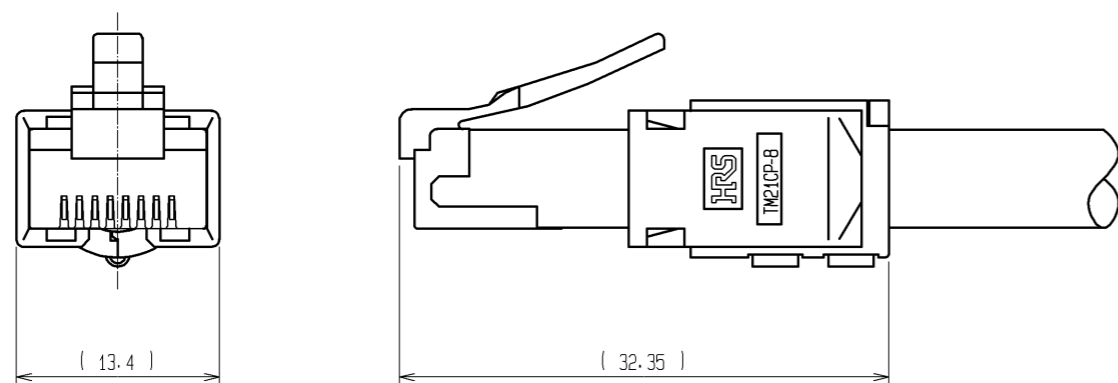
Sep.1.2021 Copyright 2021 HIROSE ELECTRIC CO., LTD. All Rights Reserved.
 In case of consideration for using Automotive equipment / device which demand high reliability, kindly contact our sales window correspondents.

5 ATTACHED

FIGURE OF MATED COVER



5 ATTACHED COVER



図番:	EDC3-122165-02
製品名:	TM21CP-88P(03)
製品コード:	CL222-2884-1-03

△ 2/2

X-ON Electronics

Largest Supplier of Electrical and Electronic Components

Click to view similar products for [Modular Connectors](#) / [Ethernet Connectors](#) category:

Click to view products by [Hirose](#) manufacturer:

Other Similar products are found below :

[8949-H88/06BLKA/SN](#) [74441-0010/BKN](#) [MP1010RX-1000](#) [MP44RX-1000](#) [PHP-6P6C-5](#) [GAX-3-66](#) [GAX-8-62](#) [GDCX-PA-66-50](#) [GDCX-PN-64](#) [GDCX-PN-66](#) [GDCX-PN-66-50](#) [GDLX-A-66](#) [GDLX-N-66](#) [GDLX-S-66](#) [GDLX-S-88K](#) [GDTX-S-88-50](#) [GDX-PA-1010](#) [GLX-N-1010M-BLK](#) [GLX-S-88M-BLK](#) [GMX-N-1010](#) [GMX-S-1010](#) [GMX-S-66](#) [GMX-SMT4-N-88](#) [GPX-2-64](#) [GSGX-N-2-88](#) [GSGX-N-4-88](#) [GSX-NS2-88-3.05](#) [GSX-NS2-88-3.05-50](#) [GSX-NS-88-3.05-50](#) [PT-108A-8C-UL](#) [PT-J951-8C](#) [PTS-J531-8CS-50UL](#) [1-1775629-2](#) [A-2014-0-4](#) [GWLX-S-88-GR](#) [GWLX-S9-88-YG](#) [DC-1021-8-WH-6](#) [1300530003](#) [1324640-4](#) [RJ11FTVC2G](#) [RJ11FTVC2N](#) [RJFTVX2SA1G](#) [132764-001](#) [1413235](#) [MP88X-1000](#) [MPS88RX-5000](#) [MRJR-5481-0F2](#) [E5288-S000K3-L](#) [E5908-15A242-L](#) [155302-001](#)