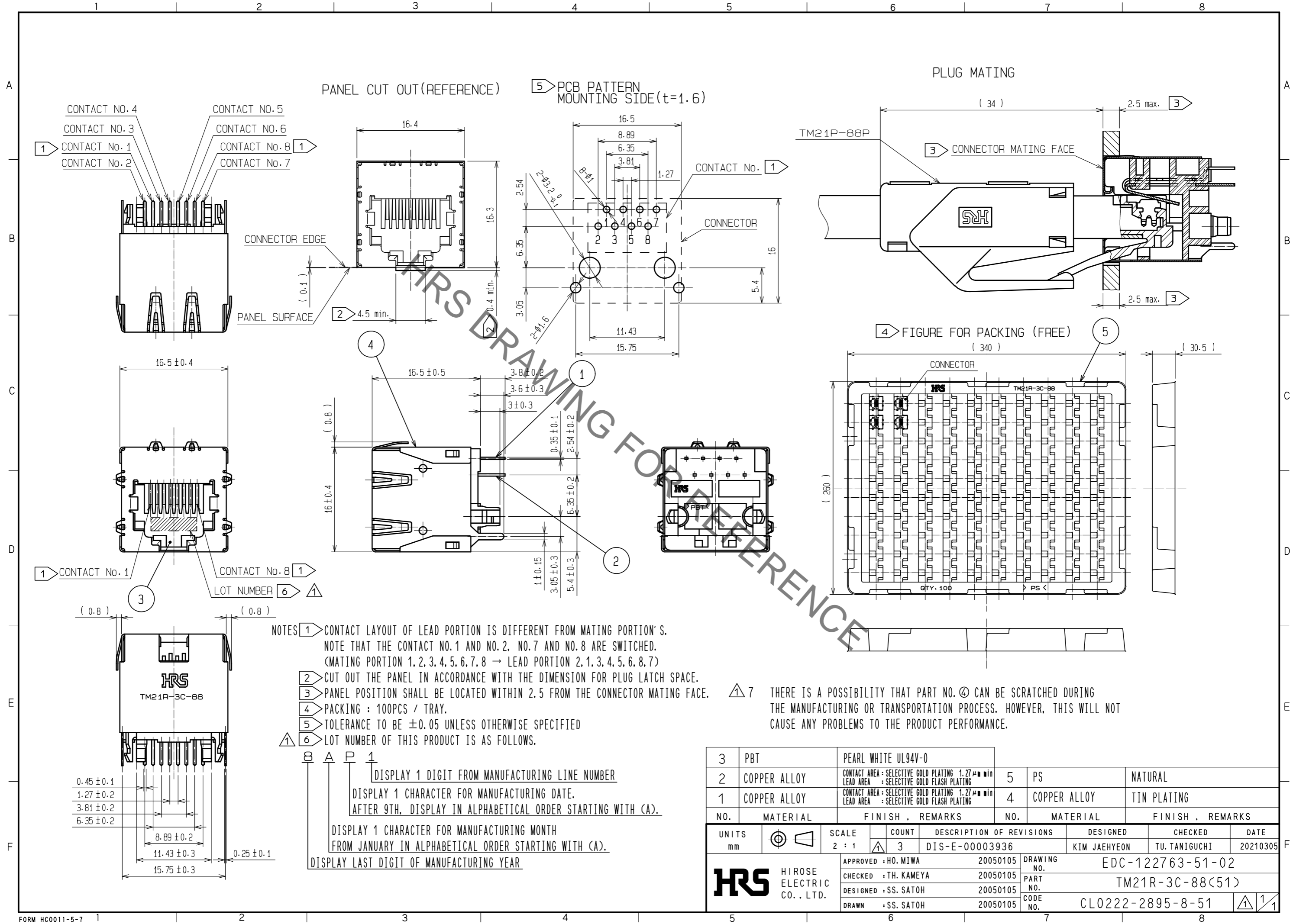


Sep.1.2021 Copyright 2021 HIROSE ELECTRIC CO., LTD. All Rights Reserved.
In case of consideration for using Automotive equipment / device which demand high reliability, kindly contact our sales window correspondents.



- NOTES
- ① CONTACT LAYOUT OF LEAD PORTION IS DIFFERENT FROM MATING PORTION'S. NOTE THAT THE CONTACT NO.1 AND NO.2, NO.7 AND NO.8 ARE SWITCHED. (MATING PORTION 1, 2, 3, 4, 5, 6, 7, 8 → LEAD PORTION 2, 1, 3, 4, 5, 6, 8, 7)
 - ② CUT OUT THE PANEL IN ACCORDANCE WITH THE DIMENSION FOR PLUG LATCH SPACE.
 - ③ PANEL POSITION SHALL BE LOCATED WITHIN 2.5 FROM THE CONNECTOR MATING FACE.
 - ④ PACKING : 100PCS / TRAY.
 - ⑤ TOLERANCE TO BE ±0.05 UNLESS OTHERWISE SPECIFIED
 - ⑥ LOT NUMBER OF THIS PRODUCT IS AS FOLLOWS.
- B A P 1
 DISPLAY 1 DIGIT FROM MANUFACTURING LINE NUMBER
 DISPLAY 1 CHARACTER FOR MANUFACTURING DATE.
 AFTER 9TH, DISPLAY IN ALPHABETICAL ORDER STARTING WITH (A).
 DISPLAY 1 CHARACTER FOR MANUFACTURING MONTH
 FROM JANUARY IN ALPHABETICAL ORDER STARTING WITH (A).
 DISPLAY LAST DIGIT OF MANUFACTURING YEAR

⚠ 7 THERE IS A POSSIBILITY THAT PART NO. ④ CAN BE SCRATCHED DURING THE MANUFACTURING OR TRANSPORTATION PROCESS. HOWEVER, THIS WILL NOT CAUSE ANY PROBLEMS TO THE PRODUCT PERFORMANCE.

3	PBT	PEARL WHITE UL94V-0					
2	COPPER ALLOY	CONTACT AREA : SELECTIVE GOLD PLATING 1.27μm min LEAD AREA : SELECTIVE GOLD FLASH PLATING	5	PS	NATURAL		
1	COPPER ALLOY	CONTACT AREA : SELECTIVE GOLD PLATING 1.27μm min LEAD AREA : SELECTIVE GOLD FLASH PLATING	4	COPPER ALLOY	TIN PLATING		
NO.	MATERIAL	FINISH . REMARKS	NO.	MATERIAL	FINISH . REMARKS		
UNITS	mm	SCALE	COUNT	DESCRIPTION OF REVISIONS	DESIGNED	CHECKED	DATE
		2 : 1	3	DIS-E-00003936	KIM JAEHYEON	TU. TANIGUCHI	20210305
APPROVED : HO. MIWA		20050105	DRAWING NO.		EDC-122763-51-02		
CHECKED : TH. KAMEYA		20050105	PART NO.		TM21R-3C-88(51)		
DESIGNED : SS. SATOH		20050105	CODE NO.		CLO222-2895-8-51		
DRAWN : SS. SATOH		20050105					

X-ON Electronics

Largest Supplier of Electrical and Electronic Components

Click to view similar products for [Modular Connectors / Ethernet Connectors](#) category:

Click to view products by [Hirose](#) manufacturer:

Other Similar products are found below :

[8949-H88/06BLKA/SN](#) [74441-0010/BKN](#) [MP1010RX-1000](#) [MP44RX-1000](#) [PHJ-4P4C-1-V-4](#) [PHP-6P6C-5](#) [GAX-3-66](#) [GAX-8-62](#) [GDCX-PA-66-50](#) [GDCX-PN-64](#) [GDCX-PN-66](#) [GDCX-PN-66-50](#) [GDLX-A-66](#) [GDLX-N-66](#) [GDLX-S-66](#) [GDLX-S-88K](#) [GDTX-S-88-50](#) [GDX-PA-1010](#) [GLX-N-1010M-BLK](#) [GLX-S-88M-BLK](#) [GMX-N-1010](#) [GMX-S-1010](#) [GMX-S-66](#) [GMX-SMT4-N-88](#) [GPX-2-64](#) [GSGX-N-2-88](#) [GSGX-N-4-88](#) [GSX-NS2-88-3.05](#) [GSX-NS2-88-3.05-50](#) [GSX-NS-88-3.68](#) [PT-108A-8C-UL](#) [PT-J951-8C](#) [PTS-J531-8CS-50UL](#) [1-1775629-2](#) [A-2014-0-4](#) [GWLX-S-88-GR](#) [GWLX-S9-88-YG](#) [DC-1021-8-WH-6](#) [1300530003](#) [1324640-4](#) [RJ11FTVC2G](#) [RJ11FTVC2N](#) [RJFTVX2SA1G](#) [132764-001](#) [1413235](#) [MP88X-1000](#) [MPS88RX-5000](#) [MRJR-5481-0F2](#) [E5288-S000K3-L](#) [E5908-15A242-L](#)