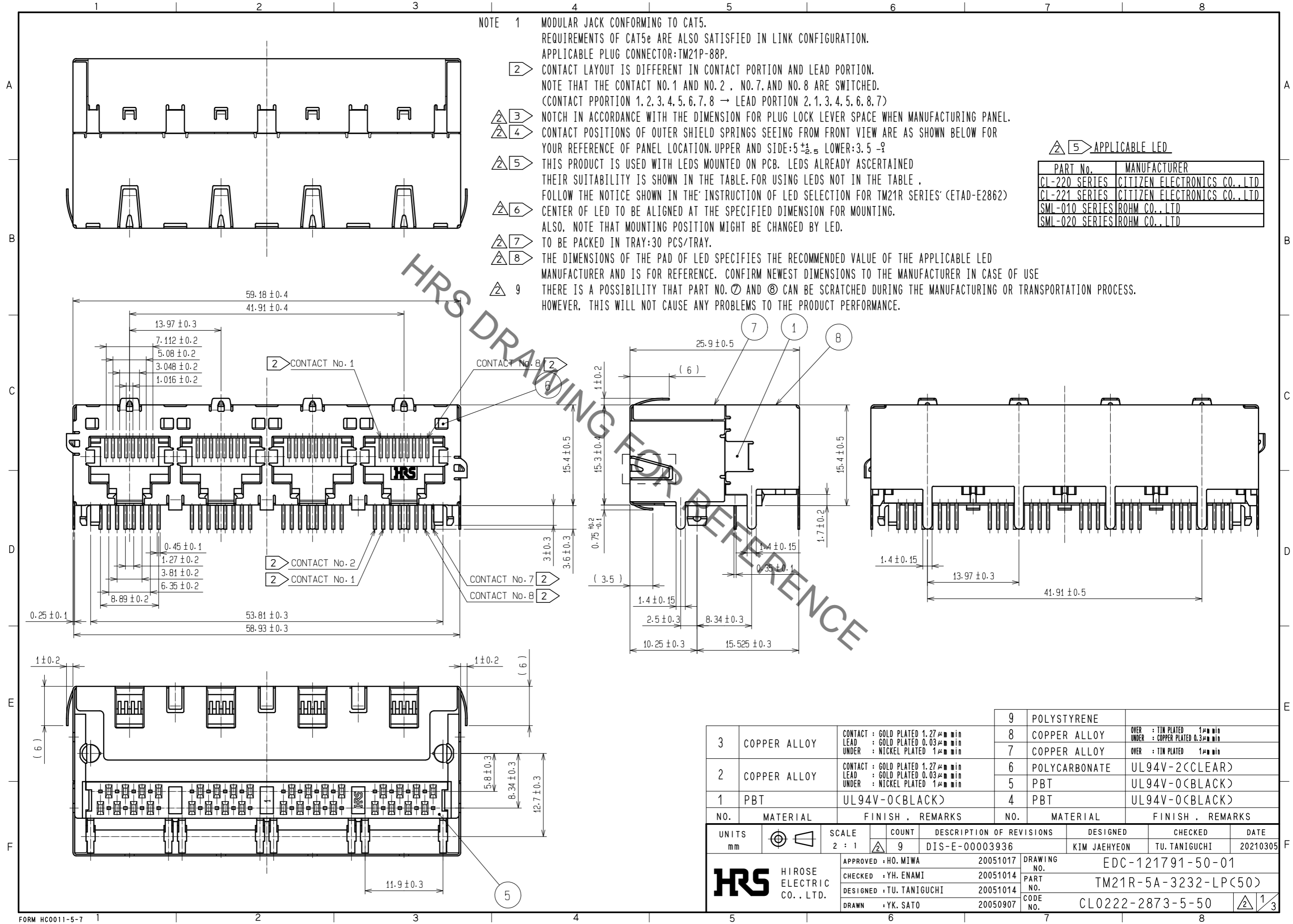


Sep.1.2021 Copyright 2021 HIROSE ELECTRIC CO., LTD. All Rights Reserved.
In case of consideration for using Automotive equipment / device which demand high reliability, kindly contact our sales window correspondents.



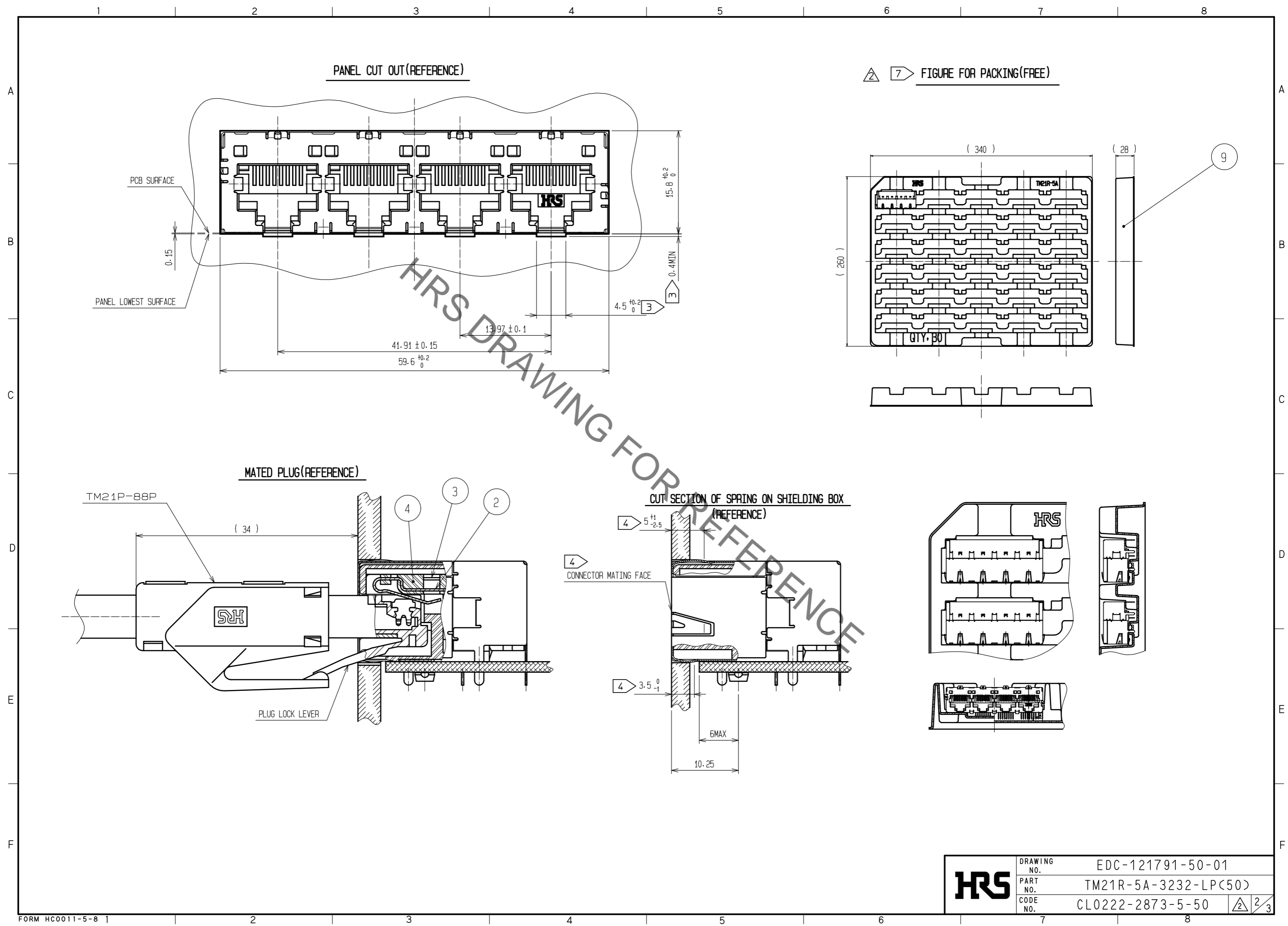
- NOTE 1 MODULAR JACK CONFORMING TO CAT5. REQUIREMENTS OF CAT5e ARE ALSO SATISFIED IN LINK CONFIGURATION. APPLICABLE PLUG CONNECTOR:TM21P-88P.
- 2 CONTACT LAYOUT IS DIFFERENT IN CONTACT PORTION AND LEAD PORTION. NOTE THAT THE CONTACT NO.1 AND NO.2 , NO.7, AND NO.8 ARE SWITCHED. (CONTACT PPORTION 1, 2, 3, 4, 5, 6, 7, 8 → LEAD PORTION 2, 1, 3, 4, 5, 6, 8, 7)
- 3 NOTCH IN ACCORDANCE WITH THE DIMENSION FOR PLUG LOCK LEVER SPACE WHEN MANUFACTURING PANEL.
- 4 CONTACT POSITIONS OF OUTER SHIELD SPRINGS SEEING FROM FRONT VIEW ARE AS SHOWN BELOW FOR YOUR REFERENCE OF PANEL LOCATION. UPPER AND SIDE:5±.5 LOWER:3.5-±
- 5 THIS PRODUCT IS USED WITH LEDS MOUNTED ON PCB. LEDS ALREADY ASCERTAINED THEIR SUITABILITY IS SHOWN IN THE TABLE.FOR USING LEDS NOT IN THE TABLE , FOLLOW THE NOTICE SHOWN IN THE INSTRUCTION OF LED SELECTION FOR TM21R SERIES' (ETAD-E2862)
- 6 CENTER OF LED TO BE ALIGNED AT THE SPECIFIED DIMENSION FOR MOUNTING. ALSO, NOTE THAT MOUNTING POSITION MIGHT BE CHANGED BY LED.
- 7 TO BE PACKED IN TRAY:30 PCS/TRAY.
- 8 THE DIMENSIONS OF THE PAD OF LED SPECIFIES THE RECOMMENDED VALUE OF THE APPLICABLE LED MANUFACTURER AND IS FOR REFERENCE. CONFIRM NEWEST DIMENSIONS TO THE MANUFACTURER IN CASE OF USE
- 9 THERE IS A POSSIBILITY THAT PART NO. ⑦ AND ⑧ CAN BE SCRATCHED DURING THE MANUFACTURING OR TRANSPORTATION PROCESS. HOWEVER, THIS WILL NOT CAUSE ANY PROBLEMS TO THE PRODUCT PERFORMANCE.

△ 5 > APPLICABLE LED

PART No.	MANUFACTURER
CL-220 SERIES	CITIZEN ELECTRONICS CO.,LTD
CL-221 SERIES	CITIZEN ELECTRONICS CO.,LTD
SML-010 SERIES	ROHM CO.,LTD
SML-020 SERIES	ROHM CO.,LTD

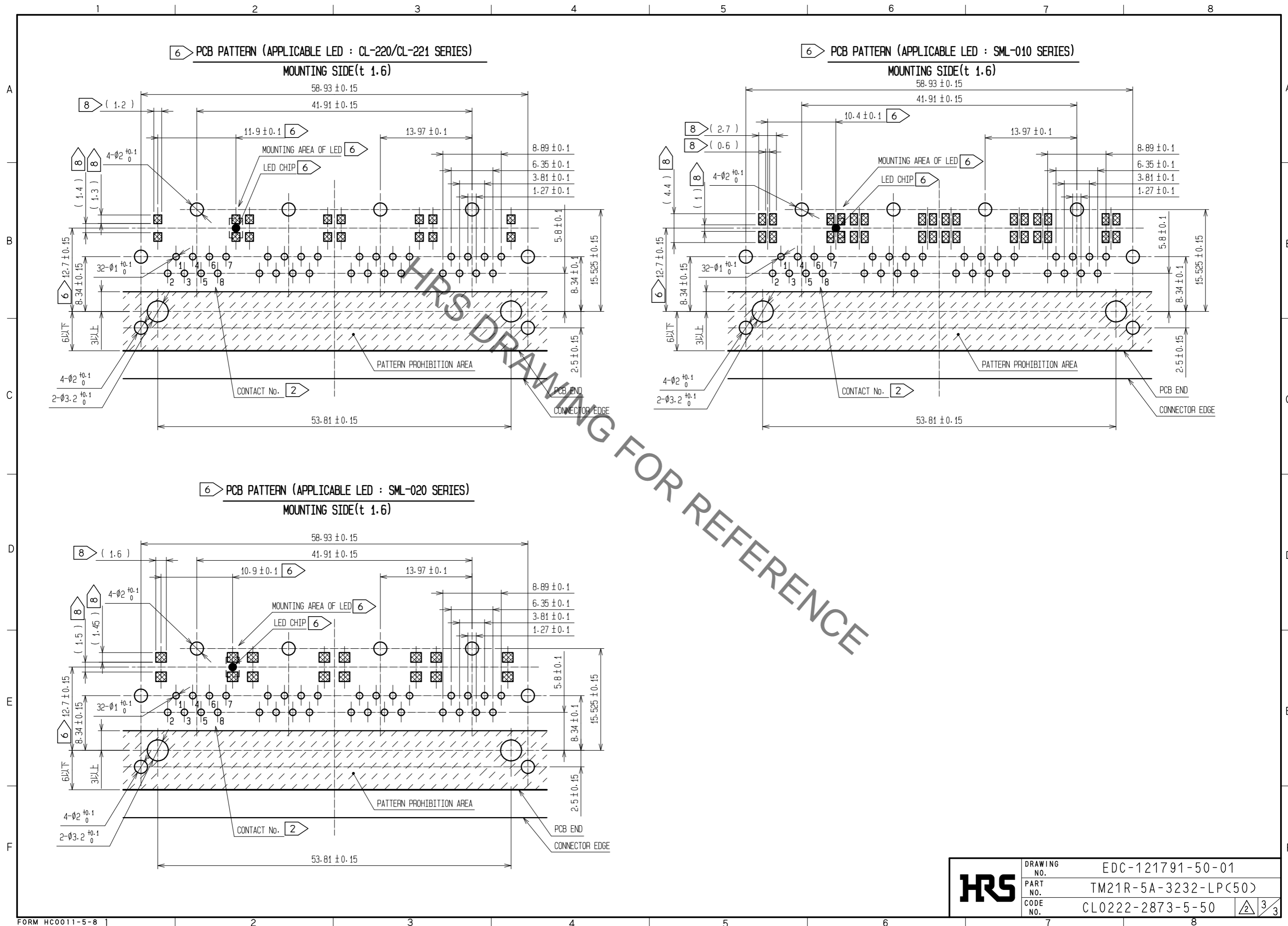
3	COPPER ALLOY	CONTACT : GOLD PLATED 1.27μm min LEAD : GOLD PLATED 0.03μm min UNDER : NICKEL PLATED 1μm min	9	POLYSTYRENE	
2	COPPER ALLOY	CONTACT : GOLD PLATED 1.27μm min LEAD : GOLD PLATED 0.03μm min UNDER : NICKEL PLATED 1μm min	8	COPPER ALLOY	OVER : TIN PLATED 1μm min UNDER : COPPER PLATED 0.3μm min
1	PBT	UL94V-0(BLACK)	7	COPPER ALLOY	OVER : TIN PLATED 1μm min
			6	POLYCARBONATE	UL94V-2(CLEAR)
			5	PBT	UL94V-0(BLACK)
			4	PBT	UL94V-0(BLACK)
NO.	MATERIAL	FINISH . REMARKS	NO.	MATERIAL	FINISH . REMARKS
UNITS	mm	SCALE 2 : 1	COUNT	9	DESCRIPTION OF REVISIONS
					DIS-E-00003936
			DESIGNED	KIM JAEHYEON	CHECKED
					TU. TANIGUCHI
			DATE	20210305	
APPROVED : HO. MIWA		20051017	DRAWING NO. EDC-121791-50-01		
CHECKED : YH. ENAMI		20051014	PART NO. TM21R-5A-3232-LP(50)		
DESIGNED : TU. TANIGUCHI		20051014	CODE NO. CL0222-2873-5-50		
DRAWN : YK. SATO		20050907			

Sep.1.2021 Copyright 2021 HIROSE ELECTRIC CO., LTD. All Rights Reserved.
In case of consideration for using Automotive equipment / device which demand high reliability, kindly contact our sales window correspondents.



HRS	DRAWING NO.	EDC-121791-50-01
	PART NO.	TM21R-5A-3232-LP(50)
	CODE NO.	CL0222-2873-5-50
		\triangle 2/3

Sep.1.2021 Copyright 2021 HIROSE ELECTRIC CO., LTD. All Rights Reserved.
In case of consideration for using Automotive equipment / device which demand high reliability, kindly contact our sales window correspondents.



HRS	DRAWING NO.	EDC-121791-50-01
	PART NO.	TM21R-5A-3232-LP(50)
	CODE NO.	CL0222-2873-5-50
		3/3

X-ON Electronics

Largest Supplier of Electrical and Electronic Components

Click to view similar products for [Modular Connectors](#) / [Ethernet Connectors](#) category:

Click to view products by [Hirose](#) manufacturer:

Other Similar products are found below :

[8949-H88/06BLKA/SN](#) [74441-0010/BKN](#) [MP1010RX-1000](#) [MP44RX-1000](#) [PHP-6P6C-5](#) [GAX-3-66](#) [GAX-8-62](#) [GDCX-PA-66-50](#) [GDCX-PN-64](#) [GDCX-PN-66](#) [GDCX-PN-66-50](#) [GDLX-A-66](#) [GDLX-N-66](#) [GDLX-S-66](#) [GDLX-S-88K](#) [GDTX-S-88-50](#) [GDX-PA-1010](#) [GLX-N-1010M-BLK](#) [GLX-S-88M-BLK](#) [GMX-N-1010](#) [GMX-S-1010](#) [GMX-S-66](#) [GMX-SMT4-N-88](#) [GPX-2-64](#) [GSGX-N-2-88](#) [GSGX-N-4-88](#) [GSX-NS2-88-3.05](#) [GSX-NS2-88-3.05-50](#) [GSX-NS-88-3.05-50](#) [PT-108A-8C-UL](#) [PT-J951-8C](#) [PTS-J531-8CS-50UL](#) [1-1775629-2](#) [A-2014-0-4](#) [GWLX-S-88-GR](#) [GWLX-S9-88-YG](#) [DC-1021-8-WH-6](#) [1300530003](#) [1324640-4](#) [RJ11FTVC2G](#) [RJ11FTVC2N](#) [RJFTVX2SA1G](#) [132764-001](#) [1413235](#) [MP88X-1000](#) [MPS88RX-5000](#) [MRJR-5481-0F2](#) [E5288-S000K3-L](#) [E5908-15A242-L](#) [155302-001](#)