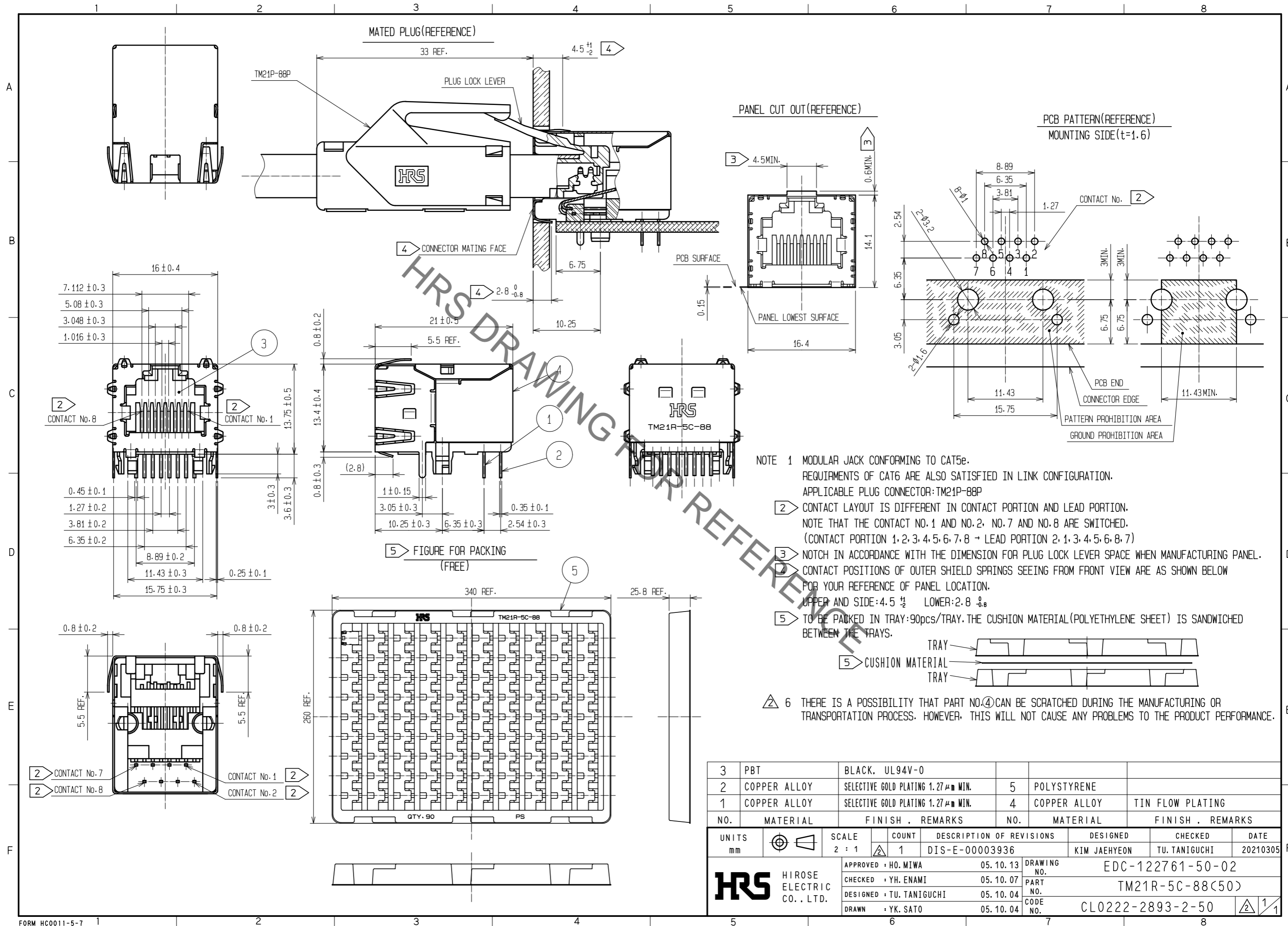


Sep.1.2021 Copyright 2021 HIROSE ELECTRIC CO., LTD. All Rights Reserved.
In case of consideration for using Automotive equipment / device which demand high reliability, kindly contact our sales window correspondents.



- NOTE 1 MODULAR JACK CONFORMING TO CAT5e.
 REQUIREMENTS OF CAT6 ARE ALSO SATISFIED IN LINK CONFIGURATION.
 APPLICABLE PLUG CONNECTOR:TM21P-88P
- 2 CONTACT LAYOUT IS DIFFERENT IN CONTACT PORTION AND LEAD PORTION.
 NOTE THAT THE CONTACT NO.1 AND NO.2, NO.7 AND NO.8 ARE SWITCHED.
 (CONTACT PORTION 1,2,3,4,5,6,7,8 → LEAD PORTION 2,1,3,4,5,6,8,7)
- 3 NOTCH IN ACCORDANCE WITH THE DIMENSION FOR PLUG LOCK LEVER SPACE WHEN MANUFACTURING PANEL.
- 4 CONTACT POSITIONS OF OUTER SHIELD SPRINGS SEEING FROM FRONT VIEW ARE AS SHOWN BELOW FOR YOUR REFERENCE OF PANEL LOCATION.
 UPPER AND SIDE:4.5⁺¹/₋₂ LOWER:2.8⁰/_{-0.8}
- 5 TO BE PACKED IN TRAY:90pcs/TRAY.THE CUSHION MATERIAL(POLYETHYLENE SHEET) IS SANDWICHED BETWEEN THE TRAYS.
- 6 THERE IS A POSSIBILITY THAT PART NO.4 CAN BE SCRATCHED DURING THE MANUFACTURING OR TRANSPORTATION PROCESS. HOWEVER, THIS WILL NOT CAUSE ANY PROBLEMS TO THE PRODUCT PERFORMANCE.

3	PBT	BLACK, UL94V-0			
2	COPPER ALLOY	SELECTIVE GOLD PLATING 1.27μm MIN.	5	POLYSTYRENE	
1	COPPER ALLOY	SELECTIVE GOLD PLATING 1.27μm MIN.	4	COPPER ALLOY	TIN FLOW PLATING
NO.	MATERIAL	FINISH . REMARKS	NO.	MATERIAL	FINISH . REMARKS
UNITS mm	⊕	SCALE 2 : 1	COUNT 1	DESCRIPTION OF REVISIONS DIS-E-00003936	DESIGNED KIM JAEHYEON
					CHECKED TU. TANIGUCHI
					DATE 20210305
APPROVED : HO. MIWA		05. 10. 13	DRAWING NO. EDC-122761-50-02		
CHECKED : YH. ENAMI		05. 10. 07	PART NO. TM21R-5C-88(50)		
DESIGNED : TU. TANIGUCHI		05. 10. 04	CODE NO. CL0222-2893-2-50		
DRAWN : YK. SATO		05. 10. 04			

X-ON Electronics

Largest Supplier of Electrical and Electronic Components

Click to view similar products for [Modular Connectors / Ethernet Connectors](#) category:

Click to view products by [Hirose](#) manufacturer:

Other Similar products are found below :

[8949-H88/06BLKA/SN](#) [74441-0010/BKN](#) [MP1010RX-1000](#) [MP44RX-1000](#) [PHJ-4P4C-1-V-4](#) [PHP-6P6C-5](#) [GAX-3-66](#) [GAX-8-62](#) [GDCX-PA-66-50](#) [GDCX-PN-64](#) [GDCX-PN-66](#) [GDCX-PN-66-50](#) [GDLX-A-66](#) [GDLX-N-66](#) [GDLX-S-66](#) [GDLX-S-88K](#) [GDTX-S-88-50](#) [GDX-PA-1010](#) [GLX-N-1010M-BLK](#) [GLX-S-88M-BLK](#) [GMX-N-1010](#) [GMX-S-1010](#) [GMX-S-66](#) [GMX-SMT4-N-88](#) [GPX-2-64](#) [GSGX-N-2-88](#) [GSGX-N-4-88](#) [GSX-NS2-88-3.05](#) [GSX-NS2-88-3.05-50](#) [GSX-NS-88-3.68](#) [PT-108A-8C-UL](#) [PT-J951-8C](#) [PTS-J531-8CS-50UL](#) [1-1775629-2](#) [A-2014-0-4](#) [GWLX-S-88-GR](#) [GWLX-S9-88-YG](#) [DC-1021-8-WH-6](#) [1300530003](#) [1324640-4](#) [RJ11FTVC2G](#) [RJ11FTVC2N](#) [RJFTVX2SA1G](#) [132764-001](#) [1413235](#) [MP88X-1000](#) [MPS88RX-5000](#) [MRJR-5481-0F2](#) [E5288-S000K3-L](#) [E5908-15A242-L](#)