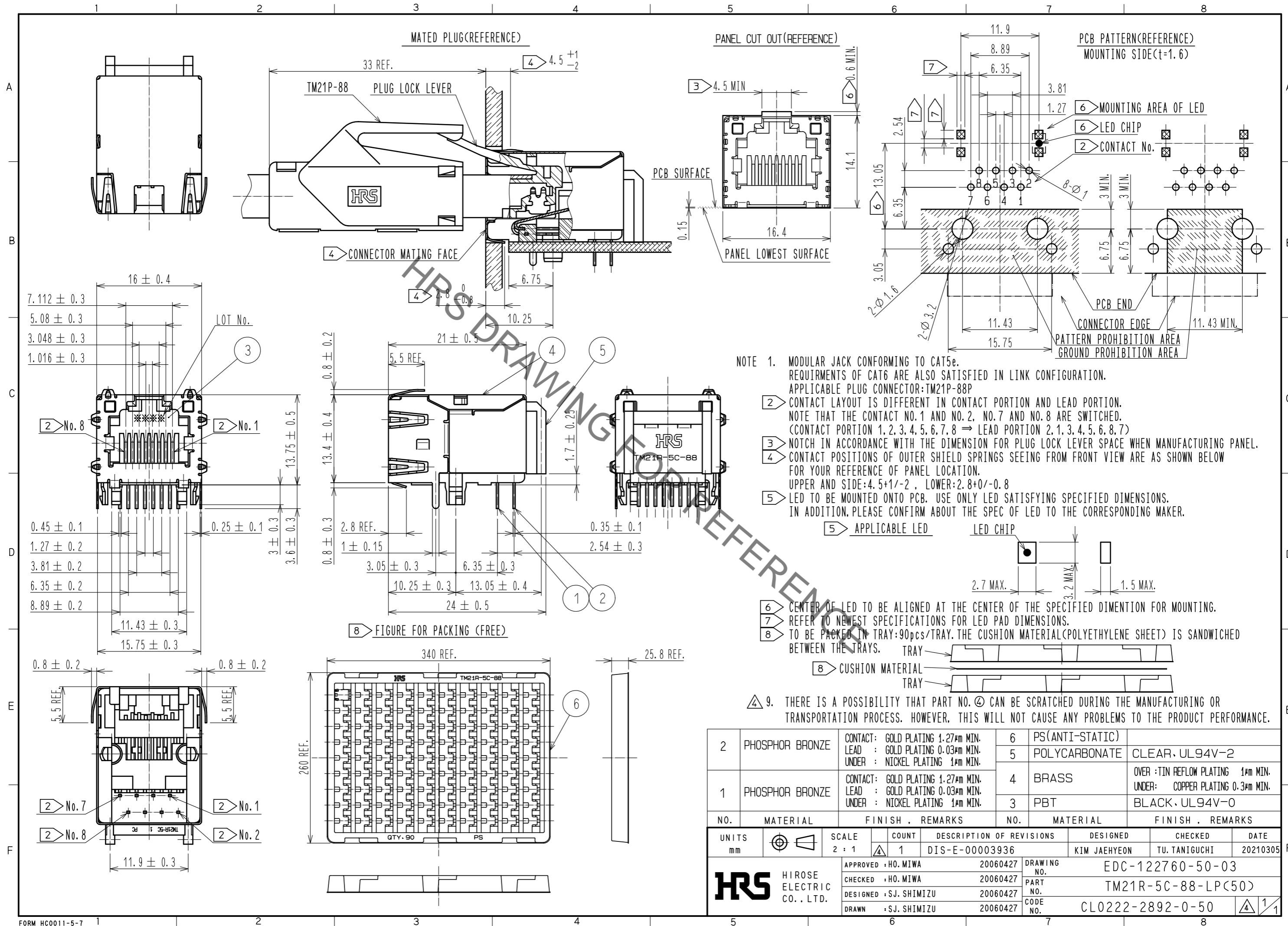


Aug.1.2021 Copyright 2021 HIROSE ELECTRIC CO., LTD. All Rights Reserved.  
In case of consideration for using Automotive equipment / device which demand high reliability, kindly contact our sales window correspondents.



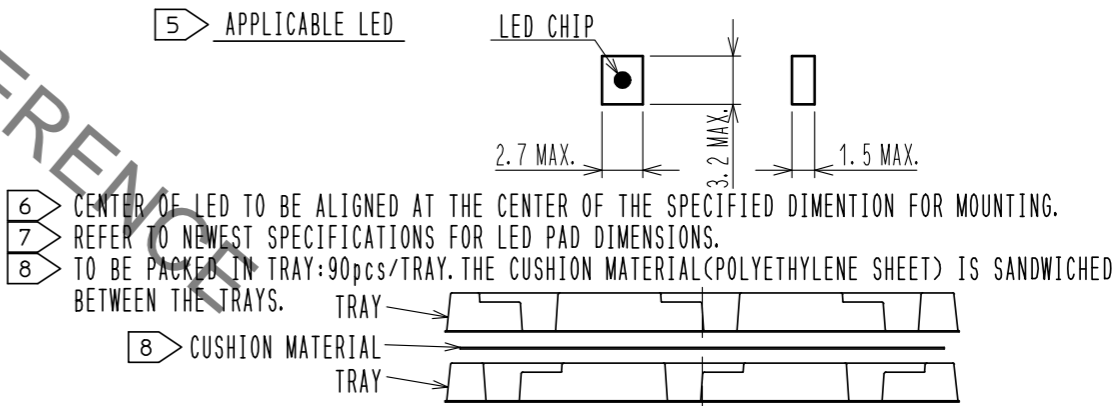
NOTE 1. MODULAR JACK CONFORMING TO CAT5e. REQUIREMENTS OF CAT6 ARE ALSO SATISFIED IN LINK CONFIGURATION. APPLICABLE PLUG CONNECTOR: TM21P-88P

2 CONTACT LAYOUT IS DIFFERENT IN CONTACT PORTION AND LEAD PORTION. NOTE THAT THE CONTACT NO.1 AND NO.2, NO.7 AND NO.8 ARE SWITCHED. (CONTACT PORTION 1, 2, 3, 4, 5, 6, 7, 8 → LEAD PORTION 2, 1, 3, 4, 5, 6, 8, 7)

3 NOTCH IN ACCORDANCE WITH THE DIMENSION FOR PLUG LOCK LEVER SPACE WHEN MANUFACTURING PANEL.

4 CONTACT POSITIONS OF OUTER SHIELD SPRINGS SEEING FROM FRONT VIEW ARE AS SHOWN BELOW FOR YOUR REFERENCE OF PANEL LOCATION. UPPER AND SIDE: 4.5+1/-2, LOWER: 2.8+0/-0.8

5 LED TO BE MOUNTED ONTO PCB. USE ONLY LED SATISFYING SPECIFIED DIMENSIONS. IN ADDITION, PLEASE CONFIRM ABOUT THE SPEC OF LED TO THE CORRESPONDING MAKER.



9. THERE IS A POSSIBILITY THAT PART NO. 4 CAN BE SCRATCHED DURING THE MANUFACTURING OR TRANSPORTATION PROCESS. HOWEVER, THIS WILL NOT CAUSE ANY PROBLEMS TO THE PRODUCT PERFORMANCE.

2	PHOSPHOR BRONZE	CONTACT: GOLD PLATING 1.27μm MIN. LEAD: GOLD PLATING 0.03μm MIN. UNDER: NICKEL PLATING 1μm MIN.	6	PS(ANTI-STATIC)	
1	PHOSPHOR BRONZE	CONTACT: GOLD PLATING 1.27μm MIN. LEAD: GOLD PLATING 0.03μm MIN. UNDER: NICKEL PLATING 1μm MIN.	5	POLYCARBONATE	CLEAR, UL94V-2
			4	BRASS	OVER: TIN REFLOW PLATING 1μm MIN. UNDER: COPPER PLATING 0.3μm MIN.
			3	PBT	BLACK, UL94V-0
NO.	MATERIAL	FINISH, REMARKS	NO.	MATERIAL	FINISH, REMARKS

UNITS	mm	SCALE	2:1	COUNT	1	DESCRIPTION OF REVISIONS	DESIGNED	CHECKED	DATE
						DIS-E-00003936	KIM JAEHYEON	TU. TANIGUCHI	20210305
APPROVED: HO. MIWA		20060427		DRAWING NO.		EDC-122760-50-03			
CHECKED: HO. MIWA		20060427		PART NO.		TM21R-5C-88-LP(50)			
DESIGNED: SJ. SHIMIZU		20060427		CODE NO.		CL0222-2892-0-50			
DRAWN: SJ. SHIMIZU		20060427							

## X-ON Electronics

Largest Supplier of Electrical and Electronic Components

*Click to view similar products for [Modular Connectors](#) / [Ethernet Connectors](#) category:*

*Click to view products by [Hirose](#) manufacturer:*

Other Similar products are found below :

[8949-H88/06BLKA/SN](#) [74441-0010/BKN](#) [MP1010RX-1000](#) [MP44RX-1000](#) [PHJ-4P4C-1-V-4](#) [PHP-6P6C-5](#) [GAX-3-66](#) [GAX-8-62](#) [GDCX-PA-66-50](#) [GDCX-PN-64](#) [GDCX-PN-66](#) [GDCX-PN-66-50](#) [GDLX-A-66](#) [GDLX-N-66](#) [GDLX-S-66](#) [GDLX-S-88K](#) [GDTX-S-88-50](#) [GDX-PA-1010](#) [GLX-N-1010M-BLK](#) [GLX-S-88M-BLK](#) [GMX-N-1010](#) [GMX-S-1010](#) [GMX-S-66](#) [GMX-SMT4-N-88](#) [GPX-2-64](#) [GSGX-N-2-88](#) [GSGX-N-4-88](#) [GSX-NS2-88-3.05](#) [GSX-NS2-88-3.05-50](#) [GSX-NS-88-3.68](#) [PT-108A-8C-UL](#) [PT-J951-8C](#) [PTS-J531-8CS-50UL](#) [1-1775629-2](#) [A-2014-0-4](#) [GWLX-S-88-GR](#) [GWLX-S9-88-YG](#) [DC-1021-8-WH-6](#) [1300530003](#) [1324640-4](#) [RJ11FTVC2G](#) [RJ11FTVC2N](#) [RJFTVX2SA1G](#) [132764-001](#) [1413235](#) [MP88X-1000](#) [MPS88RX-5000](#) [MRJR-5481-0F2](#) [E5288-S000K3-L](#) [E5908-15A242-L](#)