

Sep.1.2021 Copyright 2021 HIROSE ELECTRIC CO., LTD. All Rights Reserved.
In case of consideration for using Automotive equipment / device which demand high reliability, kindly contact our sales window correspondents.

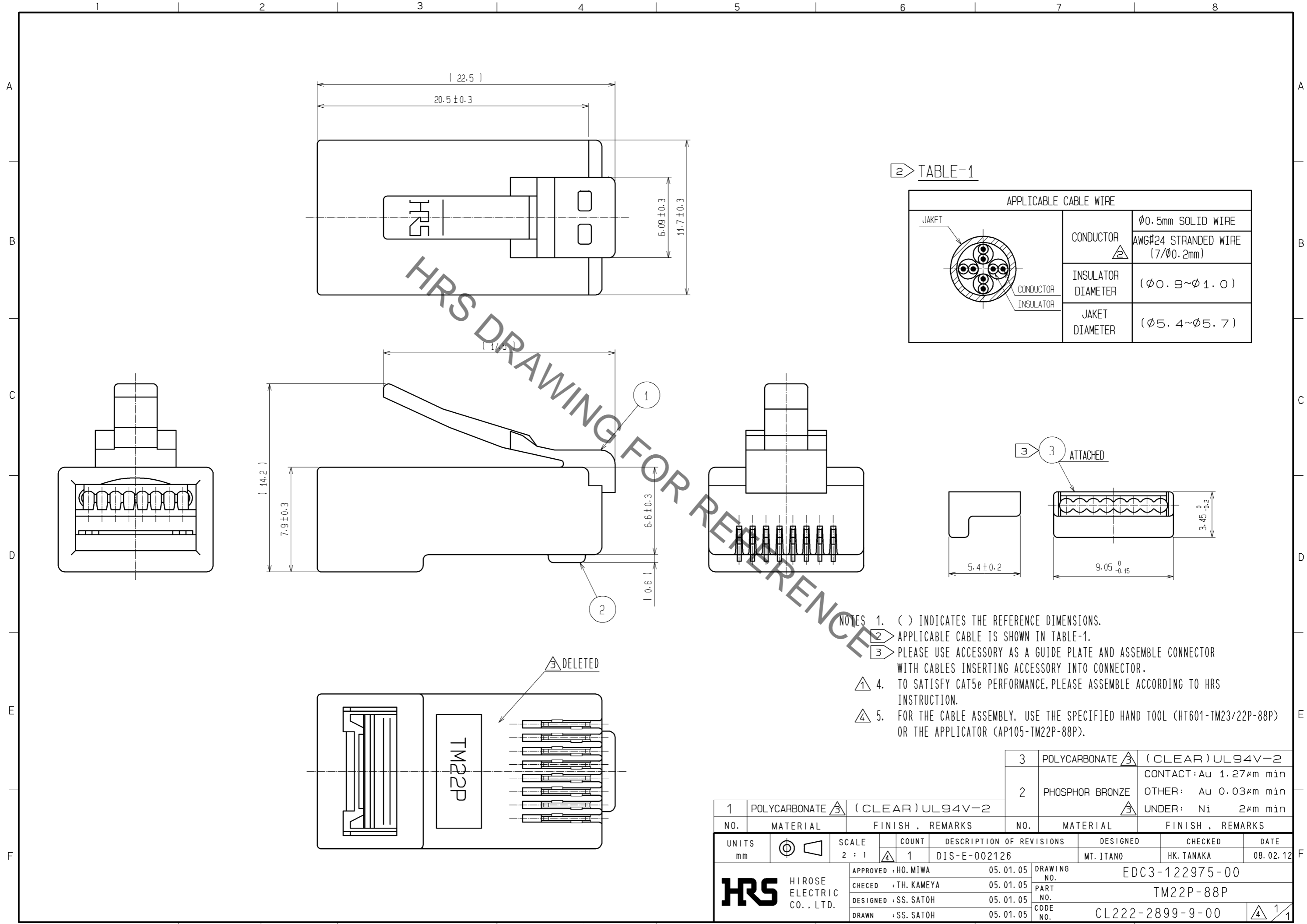


TABLE-1

| APPLICABLE CABLE WIRE | | |
|-----------------------|--------------------|---------------------------------|
| | CONDUCTOR | φ0.5mm SOLID WIRE |
| | | AWG#24 STRANDED WIRE (7/φ0.2mm) |
| | INSULATOR DIAMETER | (φ0.9~φ1.0) |
| | JAKET DIAMETER | (φ5.4~φ5.7) |

- NOTES
- () INDICATES THE REFERENCE DIMENSIONS.
 - APPLICABLE CABLE IS SHOWN IN TABLE-1.
 - PLEASE USE ACCESSORY AS A GUIDE PLATE AND ASSEMBLE CONNECTOR WITH CABLES INSERTING ACCESSORY INTO CONNECTOR.
 - TO SATISFY CAT5e PERFORMANCE, PLEASE ASSEMBLE ACCORDING TO HRS INSTRUCTION.
 - FOR THE CABLE ASSEMBLY, USE THE SPECIFIED HAND TOOL (HT601-TM23/22P-88P) OR THE APPLICATOR (AP105-TM22P-88P).

| NO. | MATERIAL | FINISH | REMARKS | NO. | MATERIAL | FINISH | REMARKS |
|-----|---------------|---------|---------|-----|-----------------|---------|---|
| 1 | POLYCARBONATE | (CLEAR) | UL94V-2 | 3 | POLYCARBONATE | (CLEAR) | UL94V-2 |
| | | | | 2 | PHOSPHOR BRONZE | | CONTACT: Au 1.27μm min OTHER: Au 0.03μm min UNDER: Ni 2μm min |

| UNITS | SCALE | COUNT | DESCRIPTION OF REVISIONS | DESIGNED | CHECKED | DATE |
|-------|-------|-------|--------------------------|-----------|------------|----------|
| mm | 2 : 1 | 1 | DIS-E-002126 | MT. ITANO | HK. TANAKA | 08.02.12 |

| | | | | |
|----------|--------------|----------|-------------|-----------------|
| APPROVED | : HO. MIWA | 05.01.05 | DRAWING NO. | EDC3-122975-00 |
| CHECKED | : TH. KAMEYA | 05.01.05 | PART NO. | TM22P-88P |
| DESIGNED | : SS. SATOH | 05.01.05 | CODE NO. | CL222-2899-9-00 |
| DRAWN | : SS. SATOH | 05.01.05 | | |

X-ON Electronics

Largest Supplier of Electrical and Electronic Components

Click to view similar products for [Modular Connectors](#) / [Ethernet Connectors](#) category:

Click to view products by [Hirose](#) manufacturer:

Other Similar products are found below :

[8949-H88/06BLKA/SN](#) [74441-0010/BKN](#) [MP1010RX-1000](#) [MP44RX-1000](#) [PHJ-4P4C-1-V-4](#) [PHP-6P6C-5](#) [GAX-3-66](#) [GAX-8-62](#) [GDCX-PA-66-50](#) [GDCX-PN-64](#) [GDCX-PN-66](#) [GDCX-PN-66-50](#) [GDLX-A-66](#) [GDLX-N-66](#) [GDLX-S-66](#) [GDLX-S-88K](#) [GDTX-S-88-50](#) [GDX-PA-1010](#) [GLX-N-1010M-BLK](#) [GLX-S-88M-BLK](#) [GMX-N-1010](#) [GMX-S-1010](#) [GMX-S-66](#) [GMX-SMT4-N-88](#) [GPX-2-64](#) [GSGX-N-2-88](#) [GSGX-N-4-88](#) [GSX-NS2-88-3.05](#) [GSX-NS2-88-3.05-50](#) [GSX-NS-88-3.68](#) [PT-108A-8C-UL](#) [PT-J951-8C](#) [PTS-J531-8CS-50UL](#) [1-1775629-2](#) [A-2014-0-4](#) [GWLX-S-88-GR](#) [GWLX-S9-88-YG](#) [DC-1021-8-WH-6](#) [1300530003](#) [1324640-4](#) [RJ11FTVC2G](#) [RJ11FTVC2N](#) [RJFTVX2SA1G](#) [132764-001](#) [1413235](#) [MP88X-1000](#) [MPS88RX-5000](#) [MRJR-5481-0F2](#) [E5288-S000K3-L](#) [E5908-15A242-L](#)