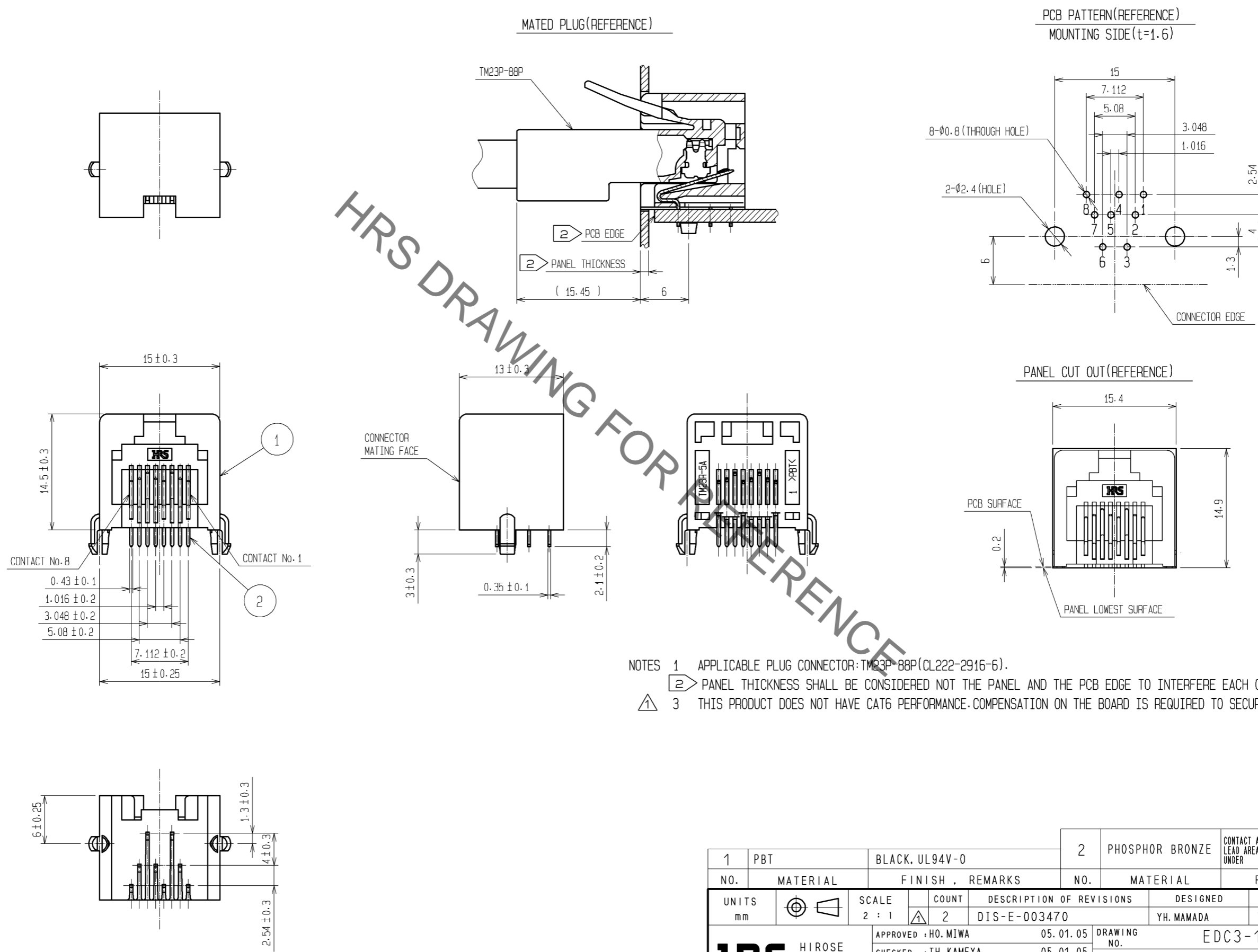


Sep.1.2021 Copyright 2021 HIROSE ELECTRIC CO., LTD. All Rights Reserved.  
In case of consideration for using Automotive equipment / device which demand high reliability, kindly contact our sales window correspondents.



NOTES 1 APPLICABLE PLUG CONNECTOR: TM23P-88P(CL222-2916-6).  
 2 PANEL THICKNESS SHALL BE CONSIDERED NOT THE PANEL AND THE PCB EDGE TO INTERFERE EACH OTHER.  
 3 THIS PRODUCT DOES NOT HAVE CAT6 PERFORMANCE. COMPENSATION ON THE BOARD IS REQUIRED TO SECURE CAT6 PERFORMANCE

1	PBT	BLACK, UL94V-0	2	PHOSPHOR BRONZE	CONTACT AREA : GOLD PLATING 1.27 μm min LEAD AREA : GOLD PLATING 0.03 μm min UNDER : NICKEL PLATING 1.27 μm min
NO.	MATERIAL	FINISH . REMARKS	NO.	MATERIAL	FINISH . REMARKS
UNITS mm		SCALE 2 : 1	COUNT 2	DESCRIPTION OF REVISIONS DIS-E-003470	DESIGNED YH. MAMADA
		APPROVED : HO. MIWA	05.01.05	DRAWING NO. EDC3-124001-02	CHECKED YH. ENAMI
HIROSE ELECTRIC CO., LTD.		CHECKED : TH. KAMEYA	05.01.05	PART NO. TM23R-5A-88(50)	DATE 10.10.15
		DESIGNED : SS. SATOH	05.01.05	CODE NO. CL222-2918-1-50	
		DRAWN : SS. SATOH	05.01.05		

## X-ON Electronics

Largest Supplier of Electrical and Electronic Components

*Click to view similar products for [Modular Connectors / Ethernet Connectors](#) category:*

*Click to view products by [Hirose](#) manufacturer:*

Other Similar products are found below :

[8949-H88/06BLKA/SN](#) [74441-0010/BKN](#) [MP1010RX-1000](#) [MP44RX-1000](#) [PHJ-4P4C-1-V-4](#) [PHP-6P6C-5](#) [GAX-3-66](#) [GAX-8-62](#) [GDCX-PA-66-50](#) [GDCX-PN-64](#) [GDCX-PN-66](#) [GDCX-PN-66-50](#) [GDLX-A-66](#) [GDLX-N-66](#) [GDLX-S-66](#) [GDLX-S-88K](#) [GDTX-S-88-50](#) [GDX-PA-1010](#) [GLX-N-1010M-BLK](#) [GLX-S-88M-BLK](#) [GMX-N-1010](#) [GMX-S-1010](#) [GMX-S-66](#) [GMX-SMT4-N-88](#) [GPX-2-64](#) [GSGX-N-2-88](#) [GSGX-N-4-88](#) [GSX-NS2-88-3.05](#) [GSX-NS2-88-3.05-50](#) [GSX-NS-88-3.68](#) [PT-108A-8C-UL](#) [PT-J951-8C](#) [PTS-J531-8CS-50UL](#) [1-1775629-2](#) [A-2014-0-4](#) [GWLX-S-88-GR](#) [GWLX-S9-88-YG](#) [DC-1021-8-WH-6](#) [1300530003](#) [1324640-4](#) [RJ11FTVC2G](#) [RJ11FTVC2N](#) [RJFTVX2SA1G](#) [132764-001](#) [1413235](#) [MP88X-1000](#) [MPS88RX-5000](#) [MRJR-5481-0F2](#) [E5288-S000K3-L](#) [E5908-15A242-L](#)