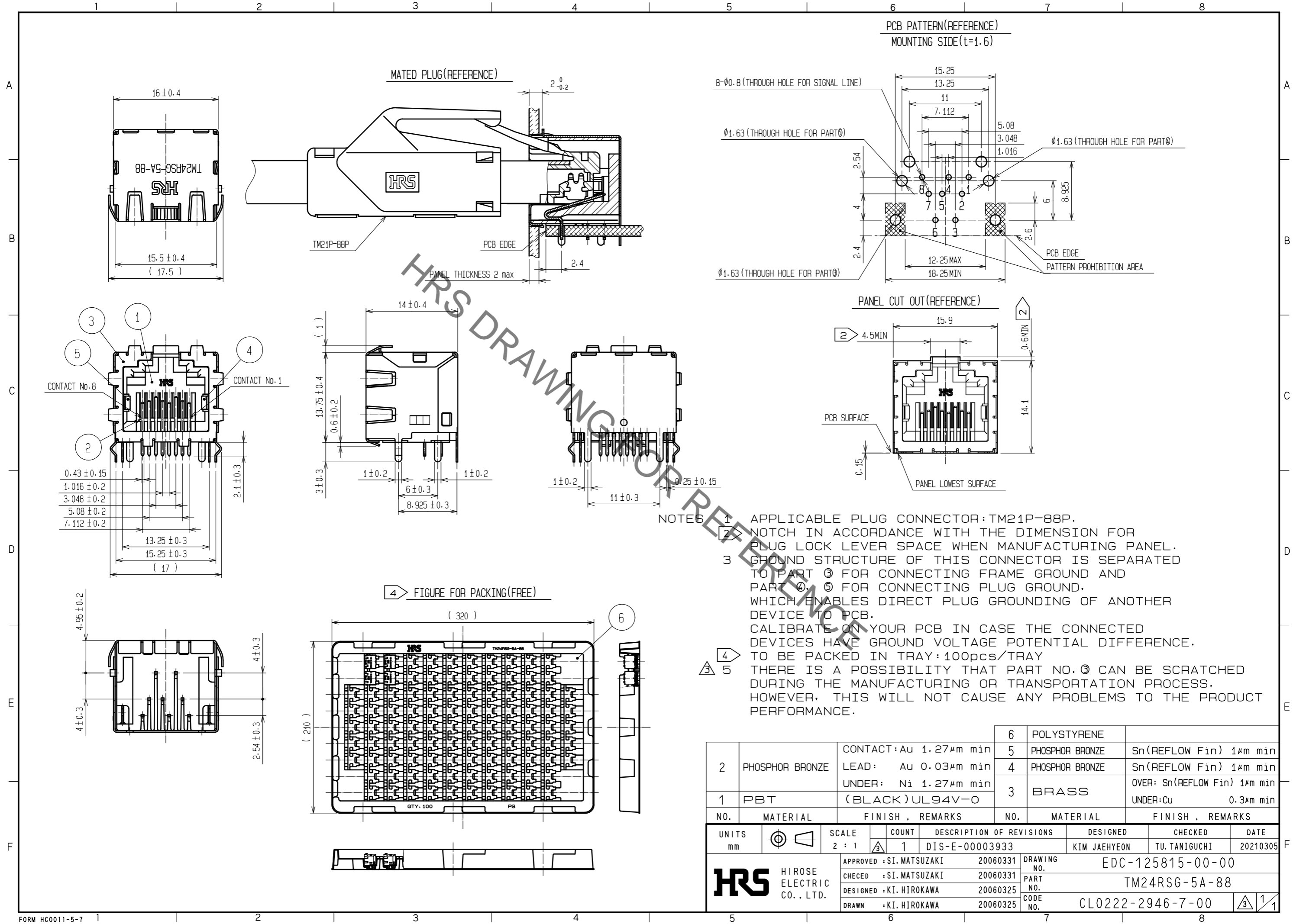


Aug.1.2021 Copyright 2021 HIROSE ELECTRIC CO., LTD. All Rights Reserved.
In case of consideration for using Automotive equipment / device which demand high reliability, kindly contact our sales window correspondents.



NOTES

- ① APPLICABLE PLUG CONNECTOR: TM21P-88P.
- ② NOTCH IN ACCORDANCE WITH THE DIMENSION FOR PLUG LOCK LEVER SPACE WHEN MANUFACTURING PANEL.
- ③ GROUND STRUCTURE OF THIS CONNECTOR IS SEPARATED TO PART ③ FOR CONNECTING FRAME GROUND AND PART ④, ⑤ FOR CONNECTING PLUG GROUND, WHICH ENABLES DIRECT PLUG GROUNDING OF ANOTHER DEVICE TO PCB. CALIBRATE ON YOUR PCB IN CASE THE CONNECTED DEVICES HAVE GROUND VOLTAGE POTENTIAL DIFFERENCE.
- ④ TO BE PACKED IN TRAY: 100pcs/TRAY
- ⑤ THERE IS A POSSIBILITY THAT PART NO. ③ CAN BE SCRATCHED DURING THE MANUFACTURING OR TRANSPORTATION PROCESS. HOWEVER, THIS WILL NOT CAUSE ANY PROBLEMS TO THE PRODUCT PERFORMANCE.

2	PHOSPHOR BRONZE	CONTACT: Au 1.27μm min	6	POLYSTYRENE	
		LEAD: Au 0.03μm min	5	PHOSPHOR BRONZE	Sn(REFLOW Fin) 1μm min
		UNDER: Ni 1.27μm min	4	PHOSPHOR BRONZE	Sn(REFLOW Fin) 1μm min
		(BLACK) UL94V-0	3	BRASS	OVER: Sn(REFLOW Fin) 1μm min UNDER: Cu 0.3μm min
1	PBT				
NO.	MATERIAL	FINISH . REMARKS	NO.	MATERIAL	FINISH . REMARKS
UNITS mm		SCALE 2 : 1	COUNT 1	DESCRIPTION OF REVISIONS DIS-E-00003933	
APPROVED : SI. MATSUZAKI		20060331	DESIGNED KIM JAEHYEON		
CHECED : SI. MATSUZAKI		20060331	CHECKED TU. TANIGUCHI		
DESIGNED : KI. HIROKAWA		20060325	DATE 20210305		
DRAWN : KI. HIROKAWA		20060325	DRAWING NO. EDC-125815-00-00		
HRS HIROSE ELECTRIC CO., LTD.			PART NO. TM24RSG-5A-88		
			CODE NO. CL0222-2946-7-00		
			③ 1/1		

X-ON Electronics

Largest Supplier of Electrical and Electronic Components

Click to view similar products for [Modular Connectors](#) / [Ethernet Connectors](#) category:

Click to view products by [Hirose](#) manufacturer:

Other Similar products are found below :

[8949-H88/06BLKA/SN](#) [74441-0010/BKN](#) [MP1010RX-1000](#) [MP44RX-1000](#) [PHJ-4P4C-1-V-4](#) [PHP-6P6C-5](#) [GAX-3-66](#) [GAX-8-62](#) [GDCX-PA-66-50](#) [GDCX-PN-64](#) [GDCX-PN-66](#) [GDCX-PN-66-50](#) [GDLX-A-66](#) [GDLX-N-66](#) [GDLX-S-66](#) [GDLX-S-88K](#) [GDTX-S-88-50](#) [GDX-PA-1010](#) [GLX-N-1010M-BLK](#) [GLX-S-88M-BLK](#) [GMX-N-1010](#) [GMX-S-1010](#) [GMX-S-66](#) [GMX-SMT4-N-88](#) [GPX-2-64](#) [GSGX-N-2-88](#) [GSGX-N-4-88](#) [GSX-NS2-88-3.05](#) [GSX-NS2-88-3.05-50](#) [GSX-NS-88-3.68](#) [PT-108A-8C-UL](#) [PT-J951-8C](#) [PTS-J531-8CS-50UL](#) [1-1775629-2](#) [A-2014-0-4](#) [GWLX-S-88-GR](#) [GWLX-S9-88-YG](#) [DC-1021-8-WH-6](#) [1300530003](#) [1324640-4](#) [RJ11FTVC2G](#) [RJ11FTVC2N](#) [RJFTVX2SA1G](#) [132764-001](#) [1413235](#) [MP88X-1000](#) [MPS88RX-5000](#) [MRJR-5481-0F2](#) [E5288-S000K3-L](#) [E5908-15A242-L](#)