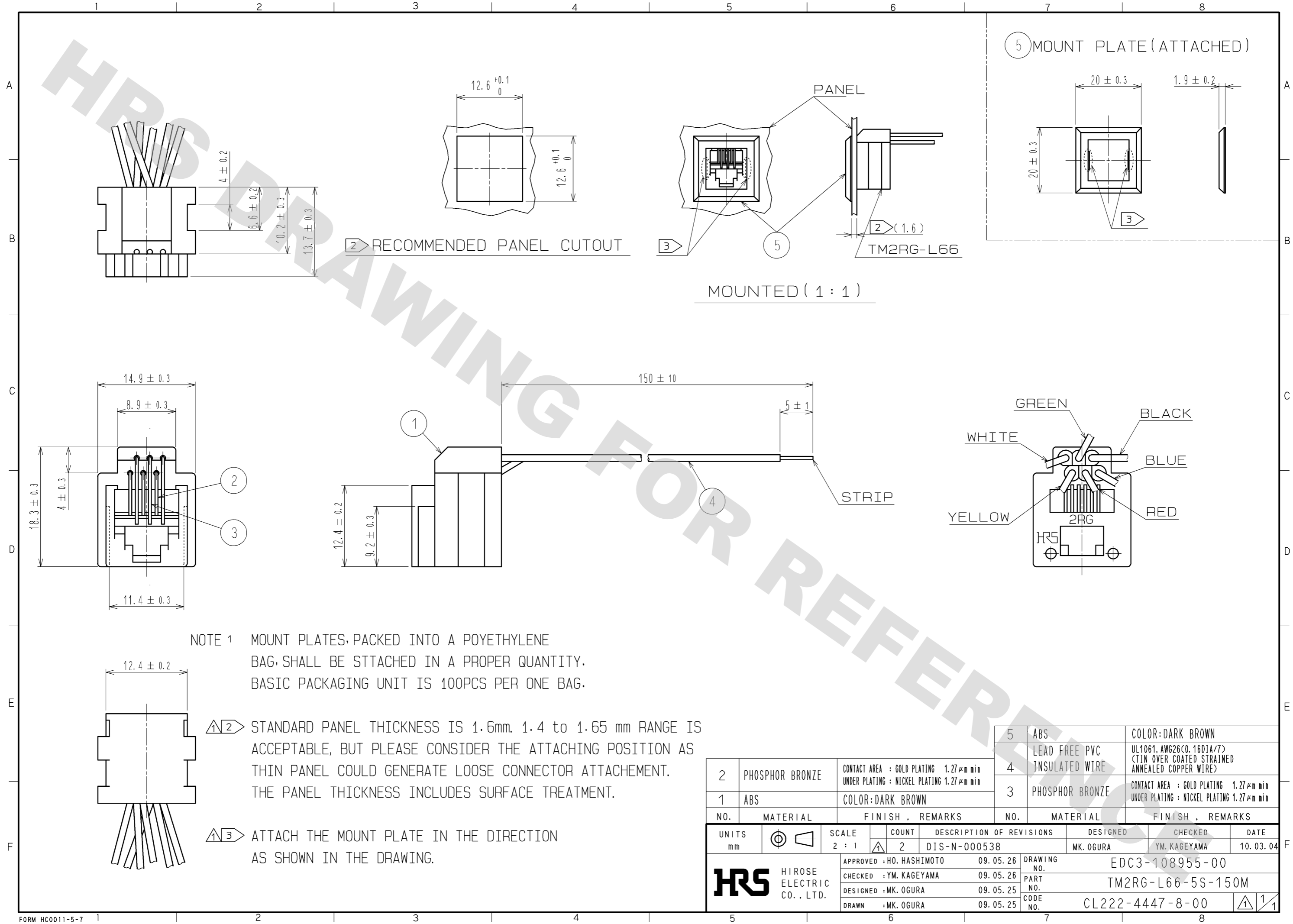


DRAWING FOR REFERENCE: This is subject to change without notice
08/11/2012



NOTE 1 MOUNT PLATES, PACKED INTO A POYETHYLENE BAG, SHALL BE STTACHED IN A PROPER QUANTITY. BASIC PACKAGING UNIT IS 100PCS PER ONE BAG.

② STANDARD PANEL THICKNESS IS 1.6mm. 1.4 to 1.65 mm RANGE IS ACCEPTABLE, BUT PLEASE CONSIDER THE ATTACHING POSITION AS THIN PANEL COULD GENERATE LOOSE CONNECTOR ATTACHEMENT. THE PANEL THICKNESS INCLUDES SURFACE TREATMENT.

③ ATTACH THE MOUNT PLATE IN THE DIRECTION AS SHOWN IN THE DRAWING.

2	PHOSPHOR BRONZE	CONTACT AREA : GOLD PLATING 1.27µm min UNDER PLATING : NICKEL PLATING 1.27µm min	5	ABS	COLOR:DARK BROWN
1	ABS	COLOR:DARK BROWN	4	LEAD FREE PVC INSULATED WIRE	UL1061,AWG26(CO.16DIA/7) (TIN OVER COATED STRAINED ANNEALED COPPER WIRE)
			3	PHOSPHOR BRONZE	CONTACT AREA : GOLD PLATING 1.27µm min UNDER PLATING : NICKEL PLATING 1.27µm min
NO.	MATERIAL	FINISH . REMARKS	NO.	MATERIAL	FINISH . REMARKS
UNITS mm		SCALE 2 : 1	COUNT 2	DESCRIPTION OF REVISIONS	
				DESIGNED MK. OGURA	CHECKED YM. KAGEYAMA
				DATE 10. 03. 04	
HRS HIROSE ELECTRIC CO., LTD.		APPROVED : HO. HASHIMOTO	09. 05. 26	DRAWING NO. EDC3-108955-00	
		CHECKED : YM. KAGEYAMA	09. 05. 26	PART NO. TM2RG-L66-5S-150M	
		DESIGNED : MK. OGURA	09. 05. 25	CODE NO. CL222-4447-8-00	
		DRAWN : MK. OGURA	09. 05. 25	1/1	

X-ON Electronics

Largest Supplier of Electrical and Electronic Components

Click to view similar products for [Modular Connectors](#) / [Ethernet Connectors](#) category:

Click to view products by [Hirose](#) manufacturer:

Other Similar products are found below :

[8949-H88/06BLKA/SN](#) [74441-0010/BKN](#) [MP1010RX-1000](#) [MP44RX-1000](#) [PHJ-4P4C-1-V-4](#) [PHP-6P6C-5](#) [GAX-3-66](#) [GAX-8-62](#) [GDCX-PA-66-50](#) [GDCX-PN-64](#) [GDCX-PN-66](#) [GDCX-PN-66-50](#) [GDLX-A-66](#) [GDLX-N-66](#) [GDLX-S-66](#) [GDLX-S-88K](#) [GDTX-S-88-50](#) [GDX-PA-1010](#) [GLX-N-1010M-BLK](#) [GLX-S-88M-BLK](#) [GMX-N-1010](#) [GMX-S-1010](#) [GMX-S-66](#) [GMX-SMT4-N-88](#) [GPX-2-64](#) [GSGX-N-2-88](#) [GSGX-N-4-88](#) [GSX-NS2-88-3.05](#) [GSX-NS2-88-3.05-50](#) [GSX-NS-88-3.68](#) [PT-108A-8C-UL](#) [PT-J951-8C](#) [PTS-J531-8CS-50UL](#) [1-1775629-2](#) [A-2014-0-4](#) [GWLX-S-88-GR](#) [GWLX-S9-88-YG](#) [DC-1021-8-WH-6](#) [1300530003](#) [1324640-4](#) [RJ11FTVC2G](#) [RJ11FTVC2N](#) [RJFTVX2SA1G](#) [132764-001](#) [1413235](#) [MP88X-1000](#) [MPS88RX-5000](#) [MRJR-5481-0F2](#) [E5288-S000K3-L](#) [E5908-15A242-L](#)