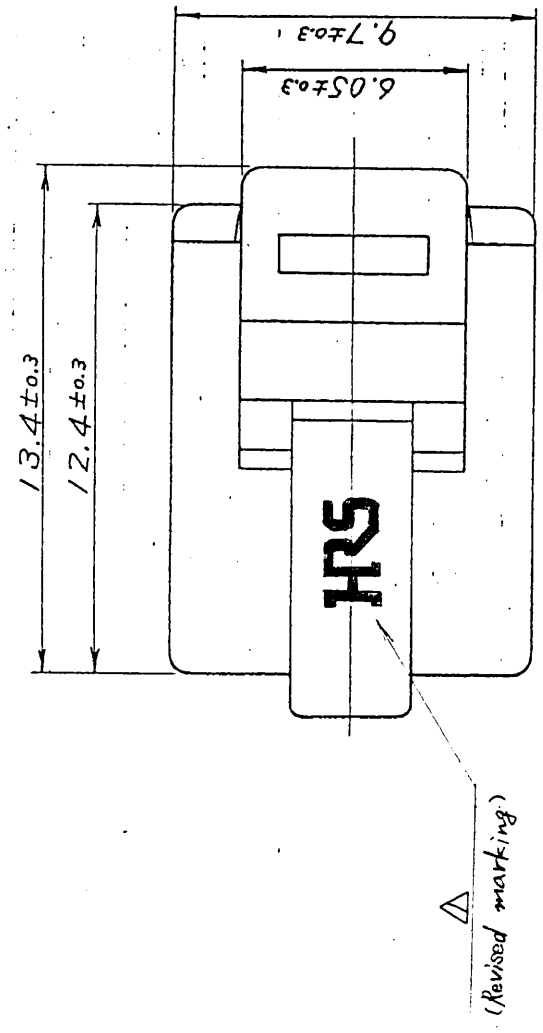
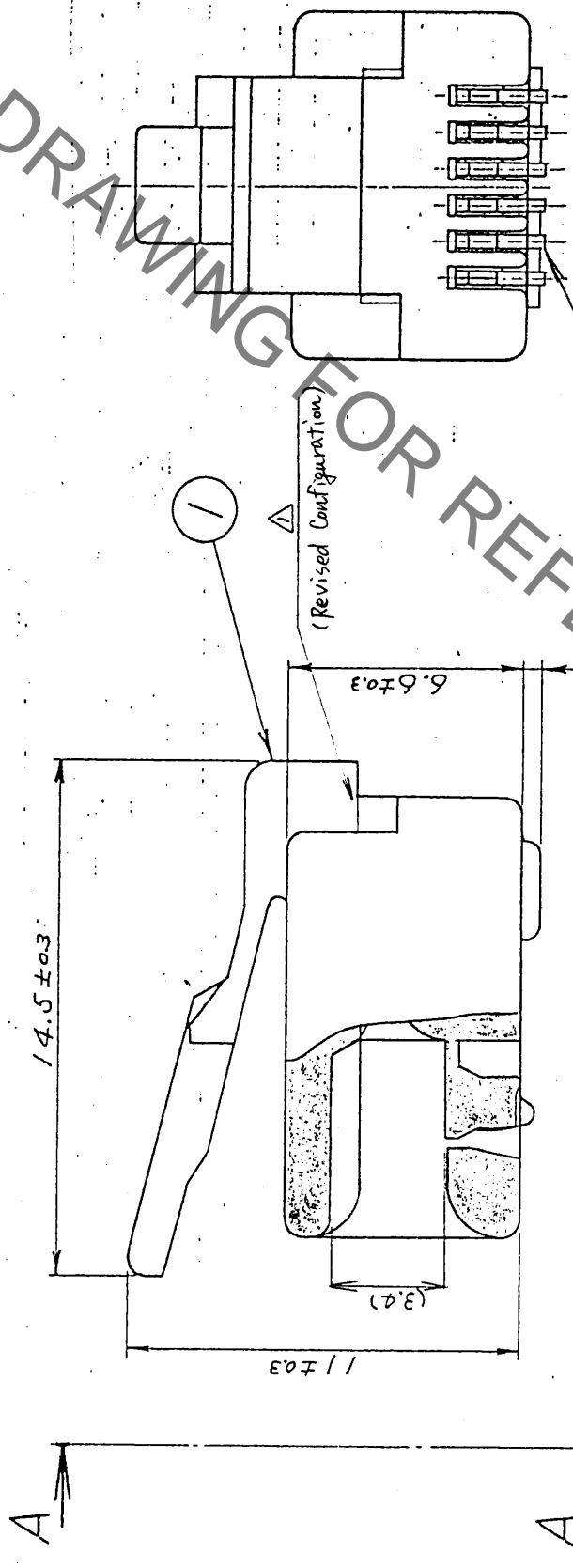


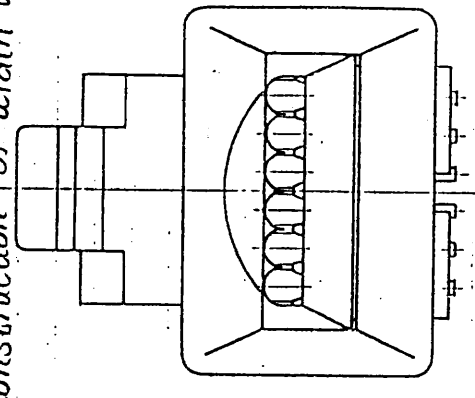
△	2	RE-E-0447	T.M	Y.S	May.10 '90	△	訂正記号	年月日	△
△						△			
△						△			



△ (Revised marking)



②



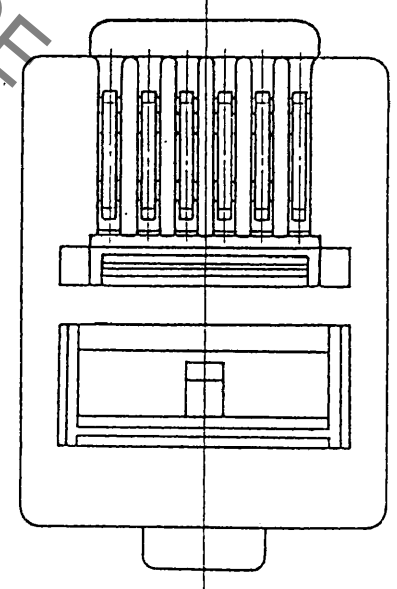
AA View

Note 1. Indication in () is reference size.
 2. Applicable cable size to this connector is as per following chart.

Applicable Cable Size	
Insulator Outside diameter(φ)	0.90 ~ 1.00
Vinyl Seath Outside diameter(φ)	(φ4.7) *1
Drain wire	(7/φ0.18) *2

*1: Outsize diameter of vinyl seath might be adjust slightly in width depending on hardness etc, but φ4.7 is remarkable.
 *2: Construction of drain wire is for reference.

HRS DRAWING FOR REFERENCE



Part No.	Polycarbonate (Color: natural)	(UL94V-2)	Z	phosphor bronze	gold plated.	thickness μm
	treatment	remark	Part No.	material	treatment	remark
公差	寸法区分	公差	製図	担当	検図	承認
±0.3	6以下	±0.3				
±0.5	6をこえ18以下	±0.5				
±0.7	18をこえ30以下	±0.7				
±1	30をこえ125以下	±1				
±1.3	125をこえ250以下	±1.3				
±1.5	250以上	±1.5				
図番	AD33-	図名	DRAWING FOR APPROVAL	製図者	承認者	出図
旧CL	CL	旧図				
図番	DC3-	製品コード	CL 222-0281-5	製品名	TM4P-66P	
スケール	5/1	単位	mm			

X-ON Electronics

Largest Supplier of Electrical and Electronic Components

Click to view similar products for [Modular Connectors / Ethernet Connectors](#) category:

Click to view products by [Hirose](#) manufacturer:

Other Similar products are found below :

[8949-H88/06BLKA/SN](#) [74441-0010/BKN](#) [MP1010RX-1000](#) [MP44RX-1000](#) [PHJ-4P4C-1-V-4](#) [PHP-6P6C-5](#) [GAX-3-66](#) [GAX-8-62](#) [GDCX-PA-66-50](#) [GDCX-PN-64](#) [GDCX-PN-66](#) [GDCX-PN-66-50](#) [GDLX-A-66](#) [GDLX-N-66](#) [GDLX-S-66](#) [GDLX-S-88K](#) [GDTX-S-88-50](#) [GDX-PA-1010](#) [GLX-N-1010M-BLK](#) [GLX-S-88M-BLK](#) [GMX-N-1010](#) [GMX-S-1010](#) [GMX-S-66](#) [GMX-SMT4-N-88](#) [GPX-2-64](#) [GSGX-N-2-88](#) [GSGX-N-4-88](#) [GSX-NS2-88-3.05](#) [GSX-NS2-88-3.05-50](#) [GSX-NS-88-3.68](#) [PT-108A-8C-UL](#) [PT-J951-8C](#) [PTS-J531-8CS-50UL](#) [1-1775629-2](#) [A-2014-0-4](#) [GWLX-S-88-GR](#) [GWLX-S9-88-YG](#) [DC-1021-8-WH-6](#) [1300530003](#) [1324640-4](#) [RJ11FTVC2G](#) [RJ11FTVC2N](#) [RJFTVX2SA1G](#) [132764-001](#) [1413235](#) [MP88X-1000](#) [MPS88RX-5000](#) [MRJR-5481-0F2](#) [E5288-S000K3-L](#) [E5908-15A242-L](#)