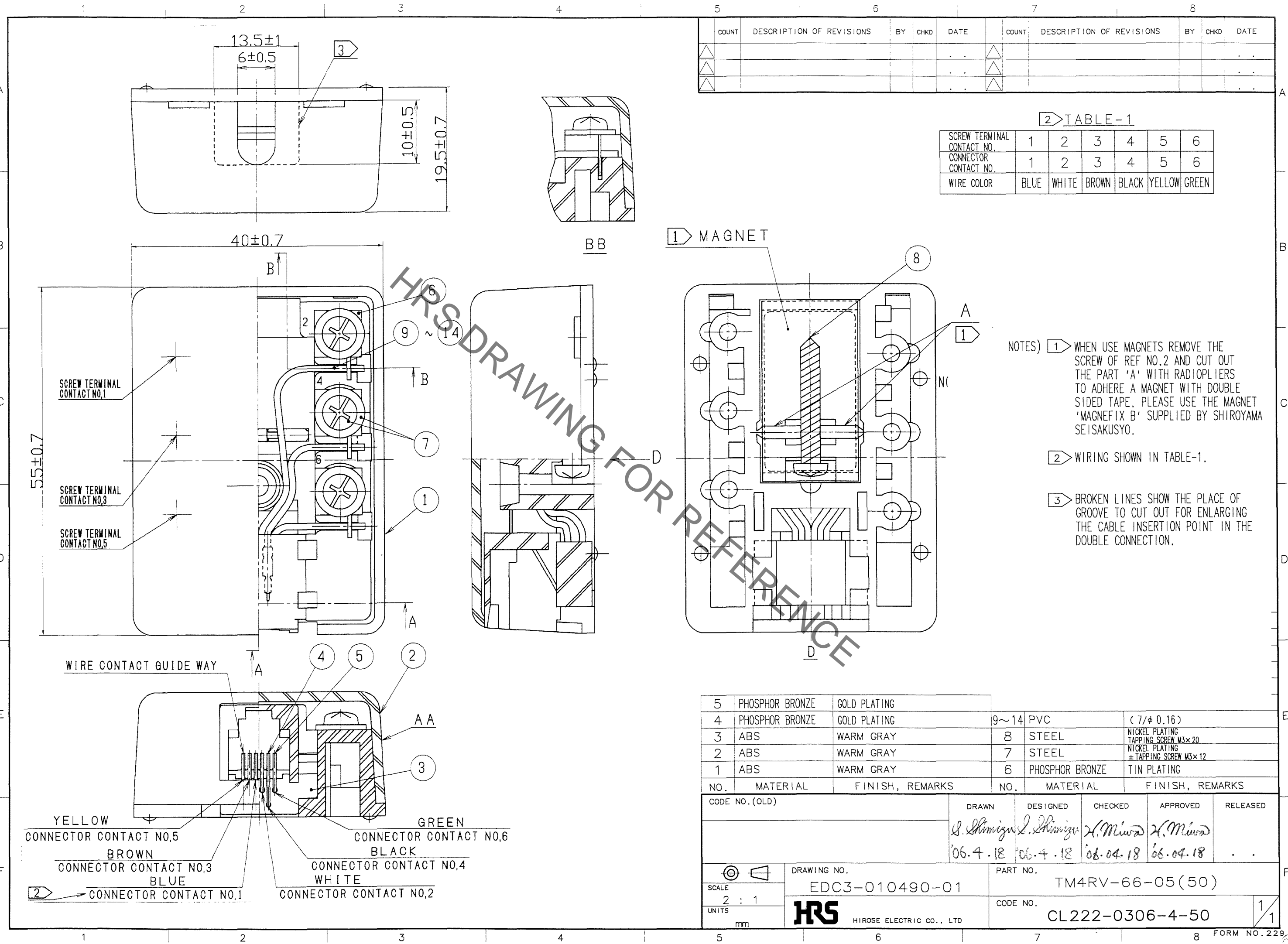


Jun.1.2019 Copyright 2019 HIROSE ELECTRIC CO., LTD. All Rights Reserved.
In case of consideration for using Automotive equipment / device which demand high reliability, kindly contact our sales window correspondents.



COUNT	DESCRIPTION OF REVISIONS	BY	CHKD	DATE	COUNT	DESCRIPTION OF REVISIONS	BY	CHKD	DATE
△					△				
△					△				
△					△				

TABLE-1

SCREW TERMINAL CONTACT NO.	1	2	3	4	5	6
CONNECTOR CONTACT NO.	1	2	3	4	5	6
WIRE COLOR	BLUE	WHITE	BROWN	BLACK	YELLOW	GREEN

NOTES) 1) WHEN USE MAGNETS REMOVE THE SCREW OF REF NO.2 AND CUT OUT THE PART 'A' WITH RADIOPLIERS TO ADHERE A MAGNET WITH DOUBLE SIDED TAPE. PLEASE USE THE MAGNET 'MAGNEFIX B' SUPPLIED BY SHIROYAMA SEISAKUSYO.

2) WIRING SHOWN IN TABLE-1.

3) BROKEN LINES SHOW THE PLACE OF GROOVE TO CUT OUT FOR ENLARGING THE CABLE INSERTION POINT IN THE DOUBLE CONNECTION.

5	PHOSPHOR BRONZE	GOLD PLATING			
4	PHOSPHOR BRONZE	GOLD PLATING	9~14	PVC (7/φ 0.16)	
3	ABS	WARM GRAY	8	STEEL NICKEL PLATING TAPPING SCREW M3×20	
2	ABS	WARM GRAY	7	STEEL NICKEL PLATING ± TAPPING SCREW M3×12	
1	ABS	WARM GRAY	6	PHOSPHOR BRONZE TIN PLATING	
NO.	MATERIAL	FINISH, REMARKS	NO.	MATERIAL	FINISH, REMARKS

CODE NO. (OLD)		DRAWN	DESIGNED	CHECKED	APPROVED	RELEASED
		S. Shimizu	S. Shimizu	H. Miura	H. Miura	
		06.4.18	06.4.18	06.04.18	06.04.18	
DRAWING NO.		PART NO.				
EDC3-010490-01		TM4RV-66-05(50)				
SCALE		CODE NO.				
2 : 1		CL222-0306-4-50				
UNITS		HIROSE ELECTRIC CO., LTD				
mm		HRS				

TO
AMC

YELLOW
CONNECTOR CONTACT NO.5

BROWN
CONNECTOR CONTACT NO.3

BLUE
CONNECTOR CONTACT NO.1

GREEN
CONNECTOR CONTACT NO.6

BLACK
CONNECTOR CONTACT NO.4

WHITE
CONNECTOR CONTACT NO.2

X-ON Electronics

Largest Supplier of Electrical and Electronic Components

Click to view similar products for [Modular Connectors](#) / [Ethernet Connectors](#) category:

Click to view products by [Hirose](#) manufacturer:

Other Similar products are found below :

[8949-H88/06BLKA/SN](#) [74441-0010/BKN](#) [MP1010RX-1000](#) [MP44RX-1000](#) [PHJ-4P4C-1-V-4](#) [PHP-6P6C-5](#) [GAX-3-66](#) [GAX-8-62](#) [GDCX-PA-66-50](#) [GDCX-PN-64](#) [GDCX-PN-66](#) [GDCX-PN-66-50](#) [GDLX-A-66](#) [GDLX-N-66](#) [GDLX-S-66](#) [GDLX-S-88K](#) [GDTX-S-88-50](#) [GDX-PA-1010](#) [GLX-N-1010M-BLK](#) [GLX-S-88M-BLK](#) [GMX-N-1010](#) [GMX-S-1010](#) [GMX-S-66](#) [GMX-SMT4-N-88](#) [GPX-2-64](#) [GSGX-N-2-88](#) [GSGX-N-4-88](#) [GSX-NS2-88-3.05-50](#) [PT-108A-8C-UL](#) [PT-J951-8C](#) [PTS-J531-8CS-50UL](#) [1-1775629-2](#) [A-2014-0-4](#) [GWLX-S-88-GR](#) [GWLX-S9-88-YG](#) [DC-1021-8-WH-6](#) [1300530003](#) [1324640-4](#) [RJ11FTVC2G](#) [RJ11FTVC2N](#) [RJFTVX2SA1G](#) [132764-001](#) [1413235](#) [MP88X-1000](#) [MPS88RX-5000](#) [MRJR-5481-0F2](#) [E5288-S000K3-L](#) [E5908-15A242-L](#) [155302-001](#) [AX100653](#)