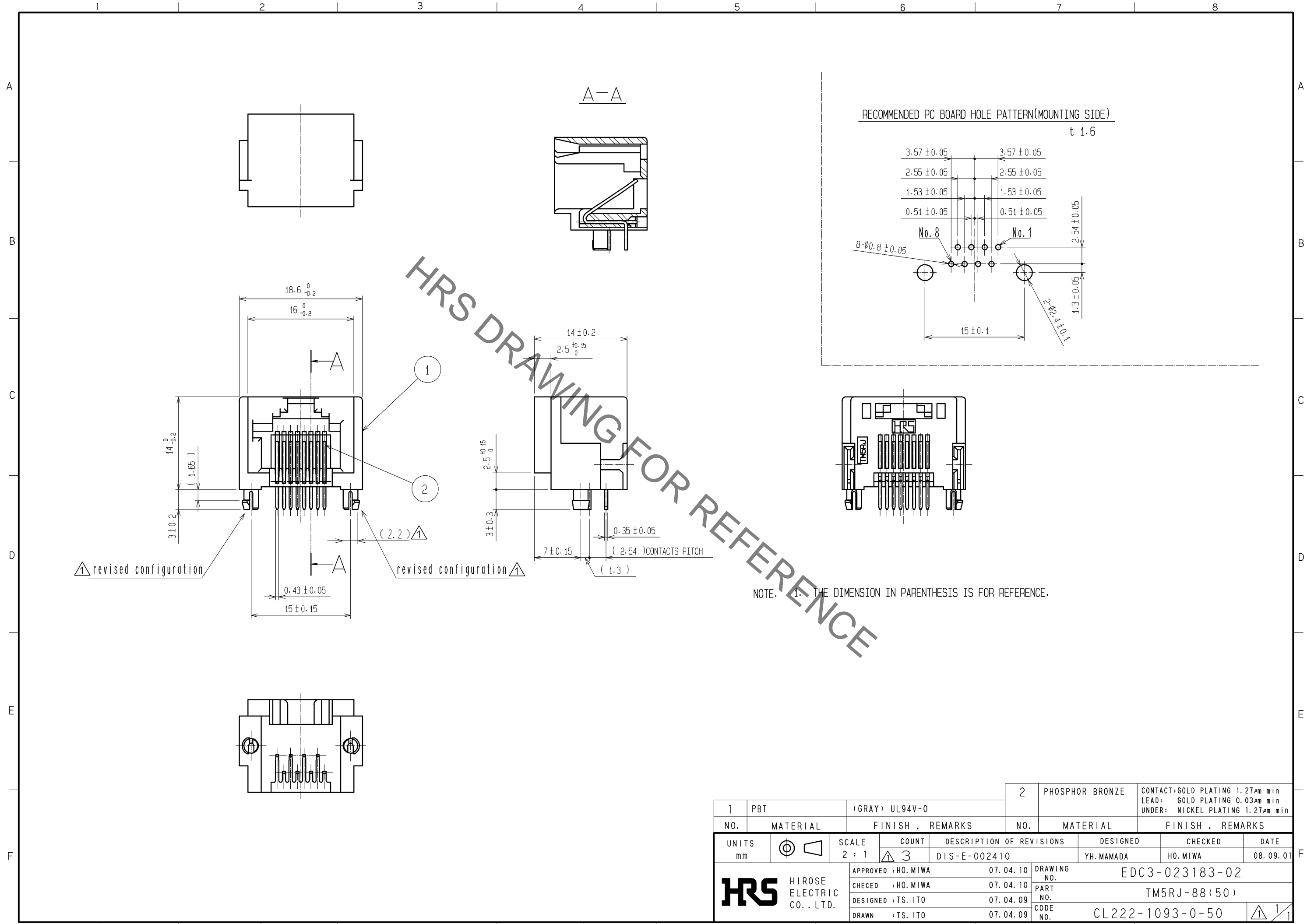


Sep.1.2021 Copyright 2021 HIROSE ELECTRIC CO., LTD. All Rights Reserved.  
In case of consideration for using Automotive equipment / device which demand high reliability, kindly contact our sales window correspondents.



HRS DRAWING FOR REFERENCE

NOTE. 1. THE DIMENSION IN PARENTHESIS IS FOR REFERENCE.

|             |          |                    |            |  |  |
|-------------|----------|--------------------|------------|--|--|
| 1           | PBT      | (GRAY) UL94V-0     | 2          | PHOSPHOR BRONZE                          | CONTACT:GOLD PLATING 1.27 $\mu$ m min<br>LEAD: GOLD PLATING 0.03 $\mu$ m min<br>UNDER: NICKEL PLATING 1.27 $\mu$ m min |
| NO.         | MATERIAL | FINISH, REMARKS    | NO.        | MATERIAL                                 | FINISH, REMARKS  |
| UNITS<br>mm |          | SCALE<br>2:1       | COUNT<br>3 | DESCRIPTION OF REVISIONS<br>DIS-E-002410 | DESIGNED<br>YH.MAMADA  |
|             |          | APPROVED : HO.MIWA | 07.04.10   | DESIGNED                                 | CHECKED  |
|             |          | CHECED : HO.MIWA   | 07.04.10   | HO.MIWA                                  | HO.MIWA  |
|             |          | DESIGNED : TS.ITO  | 07.04.09   | DATE                                     | 08.09.01   |
|             |          | DRAWN : TS.ITO     | 07.04.09   | DRAWING NO.                              | EDC3-023183-02   |
|             |          |                    |            | PART NO.                                 | TM5RJ-88(50)   |
|             |          |                    |            | CODE NO.                                 | CL222-1093-0-50  |
|             |          |                    |            |  | 1/1  |

## X-ON Electronics

Largest Supplier of Electrical and Electronic Components

*Click to view similar products for [Modular Connectors / Ethernet Connectors](#) category:*

*Click to view products by [Hirose](#) manufacturer:*

Other Similar products are found below :

[8949-H88/06BLKA/SN](#) [74441-0010/BKN](#) [MP1010RX-1000](#) [MP44RX-1000](#) [PHJ-4P4C-1-V-4](#) [PHP-6P6C-5](#) [GAX-3-66](#) [GAX-8-62](#) [GDCX-PA-66-50](#) [GDCX-PN-64](#) [GDCX-PN-66](#) [GDCX-PN-66-50](#) [GDLX-A-66](#) [GDLX-N-66](#) [GDLX-S-66](#) [GDLX-S-88K](#) [GDTX-S-88-50](#) [GDX-PA-1010](#) [GLX-N-1010M-BLK](#) [GLX-S-88M-BLK](#) [GMX-N-1010](#) [GMX-S-1010](#) [GMX-S-66](#) [GMX-SMT4-N-88](#) [GPX-2-64](#) [GSGX-N-2-88](#) [GSGX-N-4-88](#) [GSX-NS2-88-3.05](#) [GSX-NS2-88-3.05-50](#) [GSX-NS-88-3.68](#) [PT-108A-8C-UL](#) [PT-J951-8C](#) [PTS-J531-8CS-50UL](#) [1-1775629-2](#) [A-2014-0-4](#) [GWLX-S-88-GR](#) [GWLX-S9-88-YG](#) [DC-1021-8-WH-6](#) [1300530003](#) [1324640-4](#) [RJ11FTVC2G](#) [RJ11FTVC2N](#) [RJFTVX2SA1G](#) [132764-001](#) [1413235](#) [MP88X-1000](#) [MPS88RX-5000](#) [MRJR-5481-0F2](#) [E5288-S000K3-L](#) [E5908-15A242-L](#)