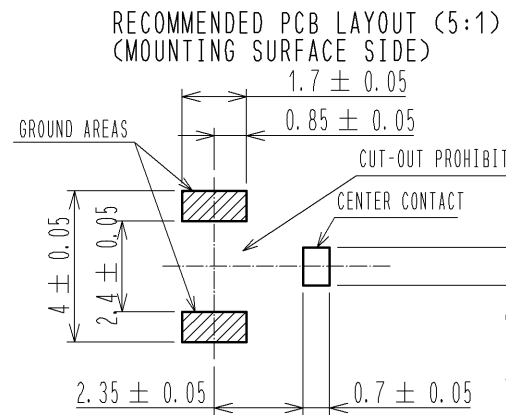
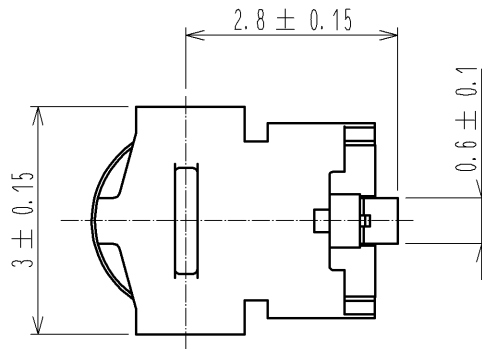
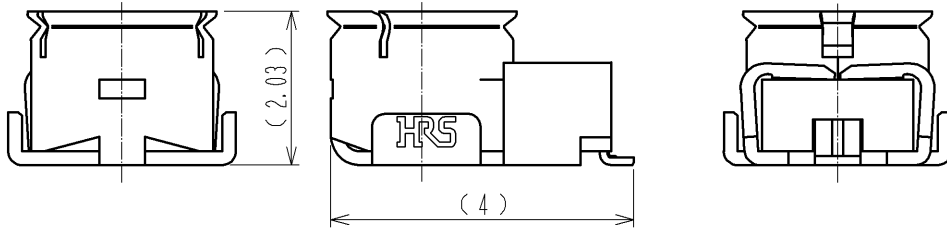
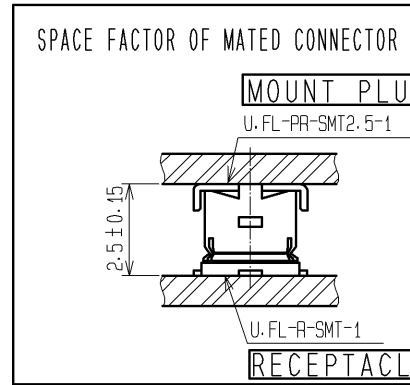
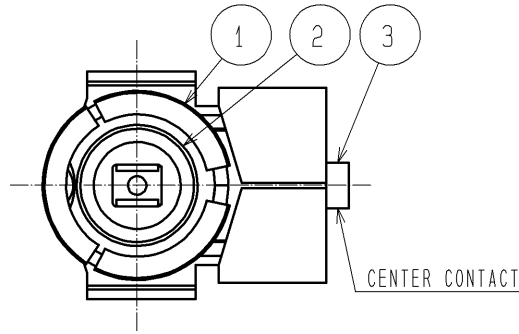


APPLICABLE STANDARD					
RATING	OPERATING TEMPERATURE RANGE	-40 °C TO +90°C(90%RH MAX)	STORAGE TEMPERATURE RANGE	-20°C TO +70°C(90%RH MAX)	
	POWER	-w	CHARACTERISTIC IMPEDANCE	50 Ω ( 0 TO 6 GHz)	
	PECULIARITY	----	RECEPTACLES	U.FL-R-SMT-1	
SPECIFICATIONS					
ITEM	TEST METHOD		REQUIREMENTS	QT	AT
CONSTRUCTION					
GENERAL EXAMINATION	VISUALLY AND BY MEASURING INSTRUMENT.		ACCORDING TO DRAWING.	X	X
MARKING	CONFIRMED VISUALLY.			X	X
ELECTRIC CHARACTERISTICS					
CONTACT RESISTANCE	10 mA MAX (DC OR 1000 Hz).	CENTER CONTACT	25 mΩ MAX.	X	—
		OUTER CONTACT	10 mΩ MAX.	X	—
INSULATION RESISTANCE	100 V DC.		500 MΩ MIN.	X	—
VOLTAGE PROOF	200 V AC FOR 1 min.CURRENT LEAKAGE 2mA MAX.	NO FLASHOVER OR BREAKDOWN.		X	X
VOLTAGE STANDING WAVE RATIO	FREQUENCY 0.045 TO 3 GHz.	VSWR	1.3 MAX.	X	—
	<span style="border: 1px solid black; padding: 0 2px;">1</span> FREQUENCY 3 TO 6 GHz.	VSWR	1.5 MAX.		
INSERTION LOSS	FREQUENCY ---- TO ---- GHz		---- dB MAX.	—	—
MECHANICAL CHARACTERISTICS					
CONTACT INSERTION AND EXTRACTION FORCES	$\phi 0.475^{+0}_{-0.004}$ BY STEEL GAUGE.	INSERTION FORCE	---- N MAX.	—	—
		EXTRACTION FORCE	0.15 N MIN.	X	—
INSERTION AND WITHDRAWAL FORCES	MEASURED BY APPLICABLE CONNECTOR.	INSERTION FORCE	---- N MAX.	—	—
		EXTRACTION FORCE	3N TO 20N	X	—
MECHANICAL OPERATION	10 TIMES INSERTIONS AND EXTRACTIONS.	1) CONTACT RESISTANCE: CENTER CONTACT 30 mΩMAX. OUTER CONTACT 15 mΩMAX. 2) NO DAMAGE, CRACK AND LOOSENESS OF PARTS.		X	—
VIBRATION	FREQUENCY 10 TO 100 Hz SINGLE AMPLITUDE 1.5 mm, 59 m/s <sup>2</sup> AT 5 CYCLES FOR 3 DIRECTIONS.	1) NO ELECTRICAL DISCONTINUITY OF 1μs. 2) NO DAMAGE, CRACK AND LOOSENESS OF PARTS.		X	—
SHOCK	735 m/s <sup>2</sup> DIRECTIONS OF PULSE 11 ms AT 3 TIMES FOR 6 DIRECTIONS.			X	—
CABLE CLAMP ROBUSTNESS (AGAINST CABLE PULL)	APPLYING A PULL FORCE THE CABLE AXIALLY AT N MAX.	1) NO WITHDRAWAL AND BREAKAGE OF CABLE. 2) NO BREAKAGE OF CLAMP.		—	—
ENVIRONMENTAL CHARACTERISTICS					
DAMP HEAT	EXPOSED AT 40 °C, 95 % TOTAL 96 h	1) INSULATION RESISTANCE: 10 MΩ MIN. (AT HIGH HUMIDITY) 2) INSULATION RESISTANCE: 500 MΩ MIN. (AT DRY) 3) NO DAMAGE, CRACK AND LOOSENESS OF PARTS.		X	—
RAPID CHANGE OF TEMPERATURE	TEMPERATURE -40 → 5-35 → +90 → 5-35°C TIME 30 → 5 → 30 → 5 min. UNDER 5 CYCLES.	NO DAMAGE, CRACK AND LOOSENESS OF PARTS.		X	—
CORROSION SALT MIST	EXPOSED IN 5% SALT WATER SPRAY FOR 48 h.	NO HEAVY CORROSION.		X	—
	COUNT	DESCRIPTION OF REVISIONS	DESIGNED	CHECKED	DATE
<span style="border: 1px solid black; padding: 0 2px;">△</span>					
REMARK 2500 pcs / PLASTIC REEL RoHS COMPLIANT			APPROVED	MH. YAMANE	09.09.24
<span style="border: 1px solid black; padding: 0 2px;">1</span> VSWR was mounted to a 50Ω glass epoxy board and measurements were conducted with SMA conversion adapters attached.			CHECKED	NK. NINOMIYA	09.09.24
			DESIGNED	MT. KANEKO	09.09.18
Unless otherwise specified, refer to JIS C 5402.			DRAWN	MT. KANEKO	09.09.18
Note QT:Qualification Test AT:Assurance Test X:Applicable Test			DRAWING NO.		ELC4-320771-10
<b>HRS</b>	SPECIFICATION SHEET		PART NO.	U. FL-PR-SMT2. 5-1 (10)	
	HIROSE ELECTRIC CO., LTD.		CODE NO.	CL331-0802-5-10	<span style="border: 1px solid black; padding: 0 2px;">△</span> 1/1

参考図：ご確認用。正式には別途納入仕様書をご請求願います。

A  
B  
C  
D  
E  
F



NOTE 1. THE QUANTITY OF U.FL-PR-SMT2.5-1(10) IS 2500 CONNECTORS PER REEL.

2. LEAD CO-PLANARITY SHALL BE 0.1 MAX

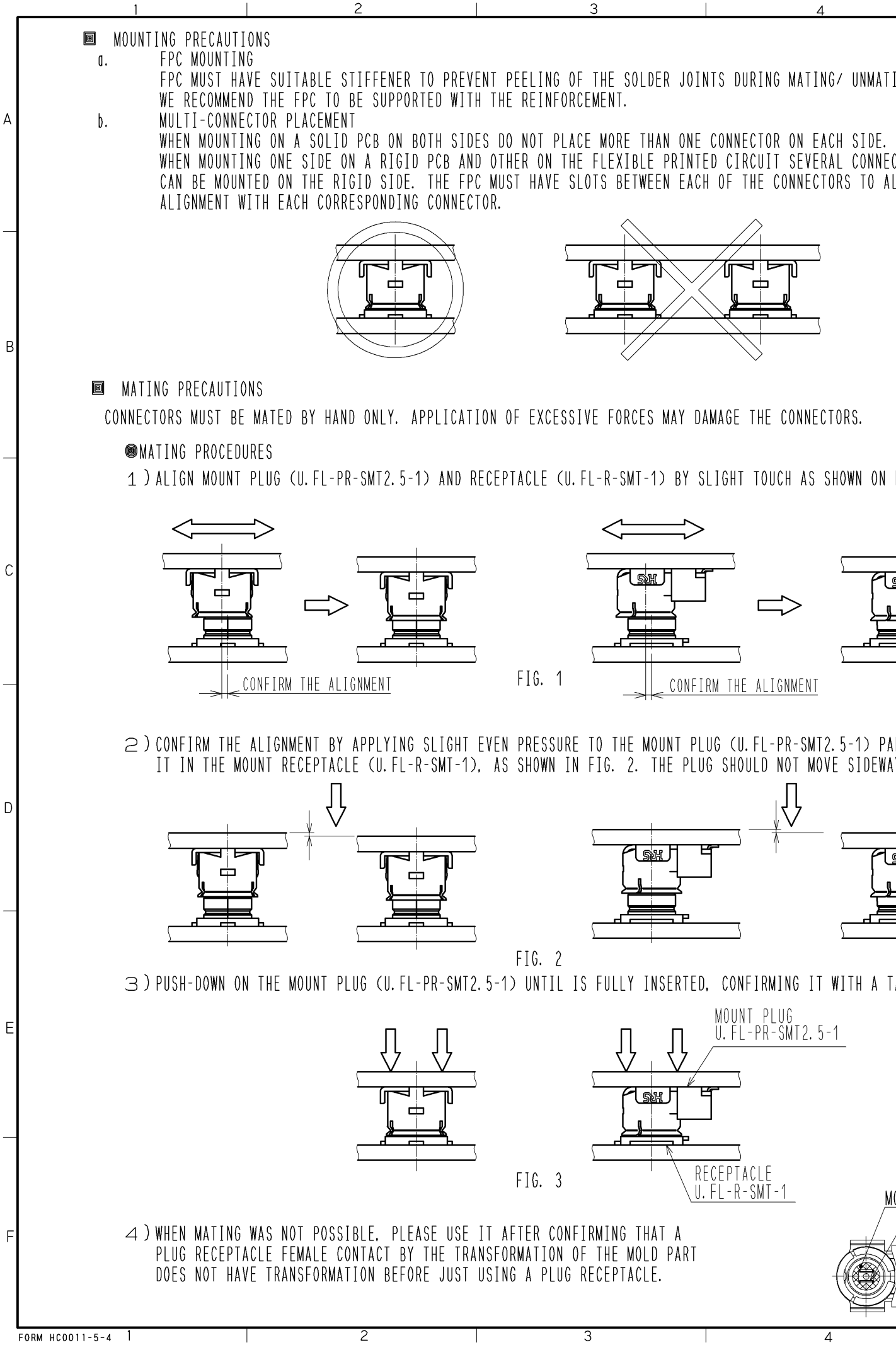
3. FOR THE POSSIBILITY OF BREAKAGE OR DEFORMATION DO NOT MATE THIS CONNECTOR WITH PARTNER. U.FL-R-SMT-1 BEFORE MOUNTING ON PC BOARD.

4. USE ALL COMPONENT WITHIN 6 MONTHS AFTER THE DELIVERY.  
 STORE IN MANUFACTURER'S PACKAGE OR TIGHTLY RE-CLOSED BOX WITH THE FOLLOWING CONDITIONS.  
 USE THIS PRODUCT WITHIN 6 MONTHS AFTER RECEIPT.  
 CHECK THE TERMINAL SOLDERABILITY BEFORE USE IF THE PRODUCT HAS BEEN STORED FOR MORE THAN 6 MONTHS  
 TEMPERATURE: -10°C TO +40°C  
 HUMIDITY : 15 TO 85% RH.

5. ENVIRONMENT CONDITION

DO NOT USE THE PRODUCT UNDER THE ENVIRONMENTAL CONDITION AS SHOWN BELOW DUE TO POSSIBLE DETERIORATION OF PRODUCTS.

SPECIAL GAS ATMOSPHERE (HYDROGEN SULFIDE GAS, SULFUR SULFIDE GAS AND HYDROGEN SULFIDE GAS)  
 PLACE ATTENTION REQUIRED : HEATING SYSTEM, AREA NEAR HOT SPRING, VOLCANIC MOUNTAIN AND ALIKE  
 WATER SPLASHED AND CONDENSATION PLACES.  
 PLACE ATTENTION REQUIRED : HARSH TEMPERATURE CHANGE.



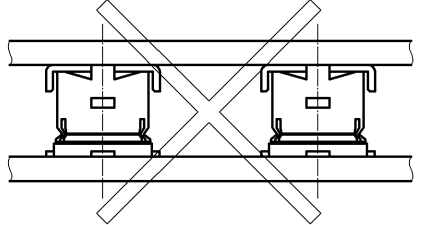
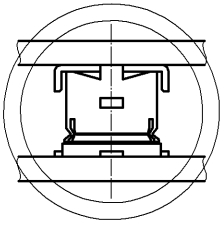
■ MOUNTING PRECAUTIONS

a. FPC MOUNTING

FPC MUST HAVE SUITABLE STIFFENER TO PREVENT PEELING OF THE SOLDER JOINTS DURING MATING/ UNMATING. WE RECOMMEND THE FPC TO BE SUPPORTED WITH THE REINFORCEMENT.

b. MULTI-CONNECTOR PLACEMENT

WHEN MOUNTING ON A SOLID PCB ON BOTH SIDES DO NOT PLACE MORE THAN ONE CONNECTOR ON EACH SIDE. WHEN MOUNTING ONE SIDE ON A RIGID PCB AND OTHER ON THE FLEXIBLE PRINTED CIRCUIT SEVERAL CONNECTORS CAN BE MOUNTED ON THE RIGID SIDE. THE FPC MUST HAVE SLOTS BETWEEN EACH OF THE CONNECTORS TO ALIGN WITH EACH CORRESPONDING CONNECTOR.



■ MATING PRECAUTIONS

CONNECTORS MUST BE MATED BY HAND ONLY. APPLICATION OF EXCESSIVE FORCES MAY DAMAGE THE CONNECTORS.

● MATING PROCEDURES

1) ALIGN MOUNT PLUG (U.FL-PR-SMT2.5-1) AND RECEPTACLE (U.FL-R-SMT-1) BY SLIGHT TOUCH AS SHOWN ON FIG. 1

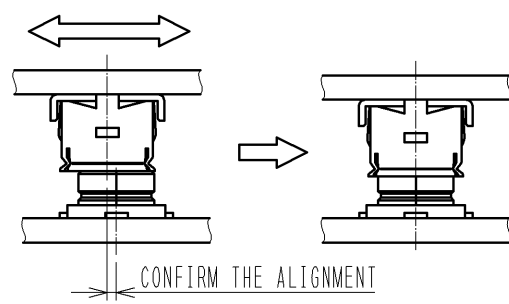
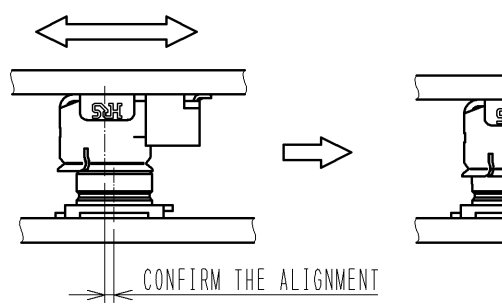


FIG. 1



2) CONFIRM THE ALIGNMENT BY APPLYING SLIGHT EVEN PRESSURE TO THE MOUNT PLUG (U.FL-PR-SMT2.5-1) PART OF THE RECEPTACLE (U.FL-R-SMT-1), AS SHOWN IN FIG. 2. THE PLUG SHOULD NOT MOVE SIDEWAYS

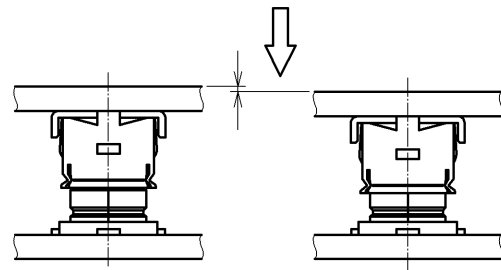
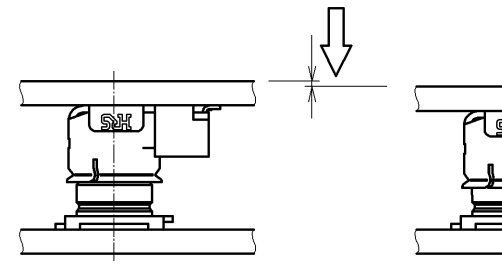


FIG. 2



3) PUSH-DOWN ON THE MOUNT PLUG (U.FL-PR-SMT2.5-1) UNTIL IS FULLY INSERTED, CONFIRMING IT WITH A TAP

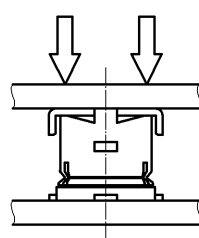
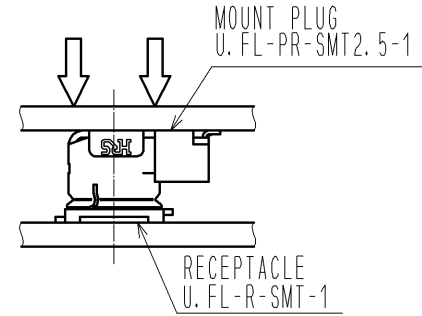
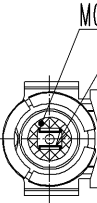


FIG. 3



4) WHEN MATING WAS NOT POSSIBLE, PLEASE USE IT AFTER CONFIRMING THAT A PLUG RECEPTACLE FEMALE CONTACT BY THE TRANSFORMATION OF THE MOLD PART DOES NOT HAVE TRANSFORMATION BEFORE JUST USING A PLUG RECEPTACLE.



## X-ON Electronics

Largest Supplier of Electrical and Electronic Components

*Click to view similar products for [RF Connectors / Coaxial Connectors](#) category:*

*Click to view products by [Hirose](#) manufacturer:*

Other Similar products are found below :

[8915-1511-000](#) [89674-0827](#) [6001-7071-019](#) [6002-7051-003](#) [6002-7551-202](#) [6059674-1](#) [619550-1](#) [630059-000](#) [M39030/3-01N](#) [M3933/25-36N](#) [6500-7071-046](#) [6769](#) [CX050L2AQ](#) [7002-1542-011](#) [7004-1512-000](#) [7009-1511-004](#) [7010-1511-000](#) [7029-1511-060](#) [7101-1541-010](#) [7101-1571-002](#) [7105-1521-002](#) [7145-1521-002](#) [7203-1571-003](#) [7209-1511-011](#) [7210-1511-015](#) [7210-1511-019](#) [73137-5015](#) [73216-2241](#) [7325-1512-000](#) [73404-2300](#) [7405-1521-005](#) [7405-1521-802](#) [7406-1521-005](#) [8527](#) [8547](#) [FS11V](#) [8808-1511-001](#) [9049-9513-000](#) [9074-9513-000](#) [9101-9573-002](#) [910A205F](#) [9130-9573-002](#) [PL11SC-026](#) [PL375-33](#) [PL40-5](#) [PL71-9](#) [PL74C-221](#) [PL75MC-217](#) [PL803-7](#) [980-8666-005](#)