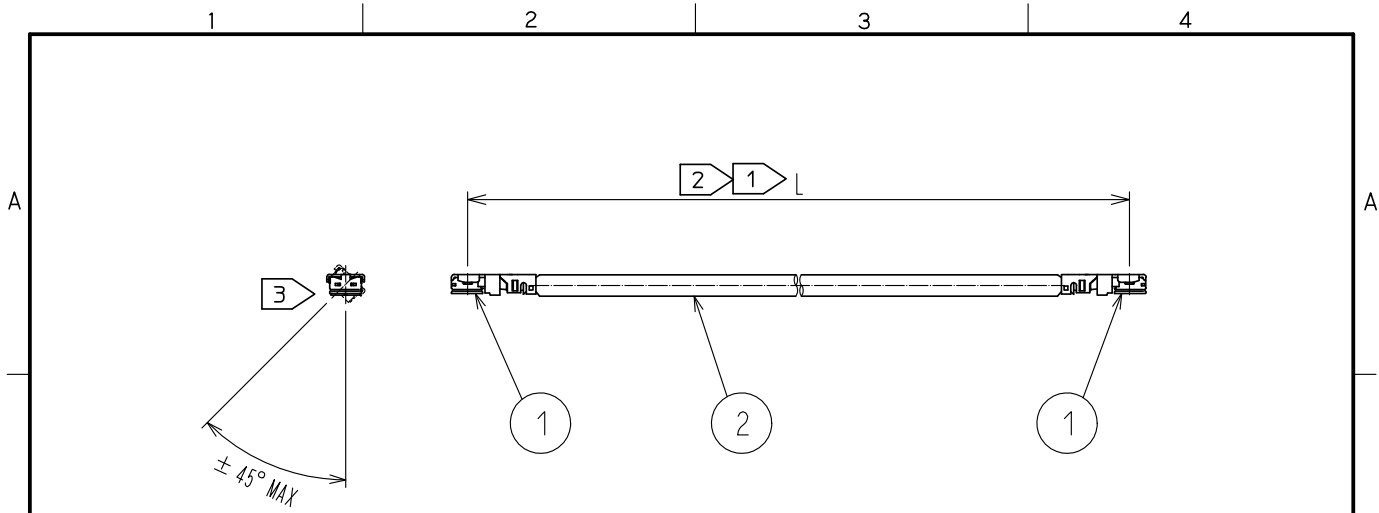


Nov.1.2020 Copyright 2020 HIROSE ELECTRIC CO., LTD. All Rights Reserved.
 In case of consideration for using Automotive equipment / device which demand high reliability, kindly contact our sales window correspondents.



| Part No. | Cable color |
|----------|-------------|
| ~068*1~ | GRAY |
| ~068*2~ | BLACK |
| ~068*3~ | WHITE |

HRS DRAWING TOP REFERENCE

NOTE ① We indicate the length of the harness on the last of product name. 'L' part.

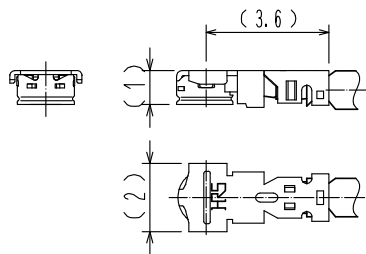
② Tolerance for [L]

| Length L [mm] | Tolerance [mm] |
|----------------|----------------|
| 100 ≦ L ≦ 200 | ±4 |
| 200 < L ≦ 500 | ±8 |
| 500 < L ≦ 1000 | ±12 |
| 1000 < L | ±1.5% |

③ Connector rotation angle is within ±45 degree from the above image.
 For long length in the case of L>500, the angle is optional.

4. Specifications are subject to change without notice.

【 DIMENSIONS OF CONNECTOR 】



| | | | | |
|-----|----------------|--------------|-----|-------------------------|
| 1 | X.FL-LP(P)-068 | CL331-0714-0 | 2 | 1.13 Dia. coaxial cable |
| NO. | PART NO. | CODE NO. | NO. | PART NO. |

HALOGEN FREE

| | | | | | | | |
|-------------|--|---------------|--------------|--|---------------------------|-----------------------|--------------------|
| UNITS mm | | SCALE FREE | COUNT ① 2 | DESCRIPTION OF REVISIONS DIS-D-00003339 | DESIGNED MS. MATSUMOTO | CHECKED MT. KANEKO | DATE 18. 07. 12 |
|-------------|--|---------------|--------------|--|---------------------------|-----------------------|--------------------|

| | | | | | | |
|--|---------------------------|-------------------------|------------|-------------|------------------------|---|
| | HIROSE ELECTRIC CO., LTD. | APPROVED :NK. NINOMIYA | 16. 07. 23 | DRAWING NO. | X. FL-2LPP-068**TS-A-L | ① |
| | | CHECKED :MT. KANEKO | 16. 07. 23 | PART NO. | | |
| | | DESIGNED :MS. MATSUMOTO | 16. 07. 23 | CODE NO. | | |
| | | DRAWN :MS. MATSUMOTO | 16. 07. 23 | NO. | | |

X-ON Electronics

Largest Supplier of Electrical and Electronic Components

Click to view similar products for [RF Cable Assemblies](#) category:

Click to view products by [Hirose](#) manufacturer:

Other Similar products are found below :

[73-6352-10](#) [73-6353-3](#) [73-6364-6](#) [R285001001](#) [R288940004](#) [R288940005](#) [145111-05-12.00](#) [1661-C-24](#) [1801171170914KE](#) [24P104C24J1-012](#) [24P104C24P1-006](#) [24P104C24P1-018](#) [24P204C24J1-003](#) [172-2150-EX](#) [1800920920914PJ](#) [FCB-3030-ALT](#) [21117-046](#) [21117-050](#) [PCX-24-50](#) [24P103C24P2-003](#) [25P203C25P2-003](#) [PTWY-24-78](#) [R284008001](#) [R285001021](#) [R285426000](#) [R288940003](#) [R288940008](#) [RF179-74BJ3-77RP1-0305](#) [4814-BB-24](#) [5260-72](#) [JT2N1-CL1-1F](#) [DLP-COAX1](#) [4814-K-48](#) [115101-09-06.00](#) [CCNTN2-MM-LL335-26](#) [73-6351-25](#) [73-6352-3](#) [73-6353-25](#) [1800920920610PJ](#) [GD0BQ0BQ024.0](#) [1-3636-600-5210](#) [TL8A-11SMA-11SMA-01500-51](#) [R284C0351060](#) [R288940009](#) [R284C0351028](#) [R288940002](#) [9702-1SL-1](#) [PT82NSMA](#) [73-6353-10](#) [R285020301W](#)