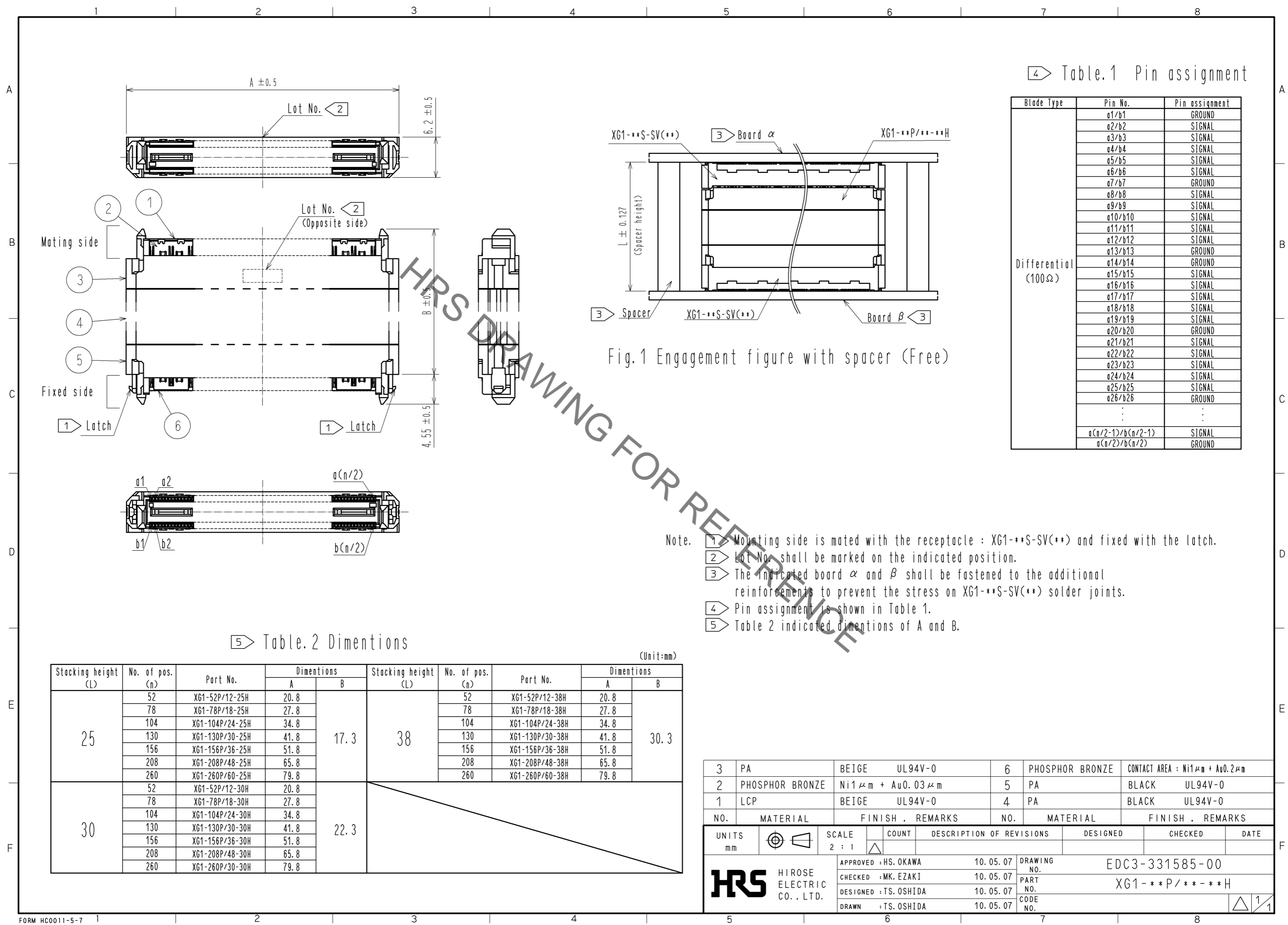


Jun.1.2021 Copyright 2021 HIROSE ELECTRIC CO., LTD. All Rights Reserved.
 In case of consideration for using Automotive equipment / device which demand high reliability, kindly contact our sales window correspondents.



4 Table.1 Pin assignment

Blade Type	Pin No.	Pin assignment
Differential (100Ω)	a1/b1	GROUND
	a2/b2	SIGNAL
	a3/b3	SIGNAL
	a4/b4	SIGNAL
	a5/b5	SIGNAL
	a6/b6	SIGNAL
	a7/b7	GROUND
	a8/b8	SIGNAL
	a9/b9	SIGNAL
	a10/b10	SIGNAL
	a11/b11	SIGNAL
	a12/b12	SIGNAL
	a13/b13	GROUND
	a14/b14	GROUND
	a15/b15	SIGNAL
	a16/b16	SIGNAL
	a17/b17	SIGNAL
	a18/b18	SIGNAL
	a19/b19	SIGNAL
	a20/b20	GROUND
	a21/b21	SIGNAL
	a22/b22	SIGNAL
	a23/b23	SIGNAL
	a24/b24	SIGNAL
	a25/b25	SIGNAL
	a26/b26	GROUND
⋮	⋮	⋮
a(n/2-1)/b(n/2-1)	SIGNAL	
a(n/2)/b(n/2)	GROUND	

Fig.1 Engagement figure with spacer (Free)

- Note.
- 1 Mounting side is mated with the receptacle : XG1-**S-SV(**) and fixed with the latch.
 - 2 Lot No. shall be marked on the indicated position.
 - 3 The indicated board α and β shall be fastened to the additional reinforcements to prevent the stress on XG1-**S-SV(**) solder joints.
 - 4 Pin assignment is shown in Table 1.
 - 5 Table 2 indicated dimensions of A and B.

5 Table.2 Dimentions

Stacking height (L)	No. of pos. (n)	Part No.	Dimentions		Stacking height (L)	No. of pos. (n)	Part No.	Dimentions	
			A	B				A	B
25	52	XG1-52P/12-25H	20.8	17.3	38	52	XG1-52P/12-38H	20.8	30.3
	78	XG1-78P/18-25H	27.8			78	XG1-78P/18-38H	27.8	
	104	XG1-104P/24-25H	34.8			104	XG1-104P/24-38H	34.8	
	130	XG1-130P/30-25H	41.8			130	XG1-130P/30-38H	41.8	
	156	XG1-156P/36-25H	51.8			156	XG1-156P/36-38H	51.8	
	208	XG1-208P/48-25H	65.8			208	XG1-208P/48-38H	65.8	
30	52	XG1-52P/12-30H	20.8	22.3		52	XG1-52P/12-30H	20.8	
	78	XG1-78P/18-30H	27.8			78	XG1-78P/18-30H	27.8	
	104	XG1-104P/24-30H	34.8			104	XG1-104P/24-30H	34.8	
	130	XG1-130P/30-30H	41.8			130	XG1-130P/30-30H	41.8	
	156	XG1-156P/36-30H	51.8			156	XG1-156P/36-30H	51.8	
	208	XG1-208P/48-30H	65.8			208	XG1-208P/48-30H	65.8	
	260	XG1-260P/60-30H	79.8		260	XG1-260P/60-30H	79.8		

3	PA	BEIGE	UL94V-0	6	PHOSPHOR BRONZE	CONTACT AREA : Ni1μm + Au0.2μm		
2	PHOSPHOR BRONZE	Ni1μm + Au0.03μm		5	PA	BLACK UL94V-0		
1	LCP	BEIGE	UL94V-0	4	PA	BLACK UL94V-0		
NO.	MATERIAL	FINISH . REMARKS		NO.	MATERIAL	FINISH . REMARKS		
UNITS mm		SCALE 2 : 1	COUNT 	DESCRIPTION OF REVISIONS		DESIGNED	CHECKED	DATE
HRS HIROSE ELECTRIC CO., LTD.		APPROVED : HS. OKAWA	10.05.07	DRAWING NO.		EDC3-331585-00		
		CHECKED : MK. EZAKI	10.05.07	PART NO.		XG1-**P/**-**H		
		DESIGNED : TS. OSHIDA	10.05.07	CODE NO.				
		DRAWN : TS. OSHIDA	10.05.07					

X-ON Electronics

Largest Supplier of Electrical and Electronic Components

Click to view similar products for [Board to Board & Mezzanine Connectors](#) category:

Click to view products by [Hirose](#) manufacturer:

Other Similar products are found below :

[589158040000018](#) [MDF7C-18P-2.54DSA\(55\)](#) [FCN-230C068-11](#) [FCN-268F012-G/BD](#) [FCN-268F036-G/BD](#) [FCN-268M012-G/0D](#) [FCN-268M024-G/1D](#) [FCN-723J004/1](#) [MIS-048-01-F-D-DP-K](#) [832-10-034-10-001000](#) [FX4C-80S-1.27DSA](#) [FCN-214Q030-G/0](#) [FCN-234P048-G/0](#) [FCN-235D050-G/C](#) [210-93-314-41-105000](#) [2-22603-0](#) [MDF7-40DP-2.54DSA\(55\)](#) [AXG720047](#) [MIT-114-03-F-D-K](#) [55323-1519](#) [DF33-2P-3.3DSA\(24\)](#) [YFT-20-05-H-03-SB-K](#) [503308-3040](#) [026-6203-PDB](#) [027-6203-PDB](#) [069159702701000](#) [10123981-102LF](#) [101A10019X](#) [55650-0588-C](#) [68682-310LF](#) [68684-306](#) [75140-7012](#) [87471-650](#) [YTW-30-07-H-Q-410-140](#) [FCN-268F024-G0D](#) [10124054-515LF](#) [68685-603](#) [8-1616154-3](#) [MIS-019-01-F-D](#) [FCN-268M024-G/3D](#) [FCN-268M036-G/BD](#) [20021832-06016C1LF](#) [KX15-20KLDL-E1000E](#) [AXE810124](#) [FCN-214J100-G/0](#) [FCN-230C068-E/S](#) [AXE812124](#) [AXE816124](#) [AXE720127](#) [354184](#)