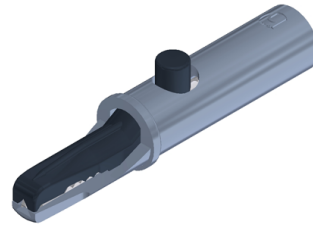
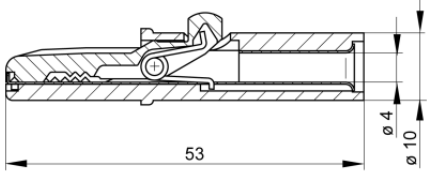


Crocodile clips

AK 10



Product	AK 10
description	Insulated alligator clip. Clamping range up to 6 mm bolt diameter. Fine wire section for very thin wires. Only the lower part of the clip has a tin-plated, brass contact insert. 4 mm diameter socket connection.
operating instruction	BA420
article-no. / *colour	9301261xx <div style="display: flex; justify-content: space-around; align-items: center;"> <div style="text-align: center;">● 00 black</div> <div style="text-align: center;">● 01 red</div> <div style="text-align: center;">● 02 blue</div> <div style="text-align: center;">● 03 yellow</div> <div style="text-align: center;">● 04 green</div> </div> <div style="text-align: right; border: 1px solid black; padding: 2px; margin-top: 5px;">Sn</div>
drawing	
technical data	
connection	unsprung socket 4 mm
rated voltage ⁽¹⁾	30 VAC / 60 VDC
measurement cat. acc. to IEC 61010	O ⁽³⁾
rated current ⁽¹⁾ (consider derating curve)	6 A
material socket	brass, tin plated
housing material	PS
temperature range acc. To IEC61010 ⁽²⁾	-25 °C to +60 °C
flammability class acc. to UL 94 (only valid for basic material of housing)	HB
clamping range	6 mm
standard	IEC 61010

4 mm system

⁽¹⁾ for normal environmental conditions -5°C to +40°C

⁽²⁾ contact the manufacturer for applications at deviating temperature ranges

⁽³⁾ without rated measurement category, for other circuits that are not directly connected to mains
stand: 19.06.2019

X-ON Electronics

Largest Supplier of Electrical and Electronic Components

Click to view similar products for [Control Switches](#) category:

Click to view products by [Hirschmann](#) manufacturer:

Other Similar products are found below :

[80887-99](#) [80932-99](#) [86855-00](#) [88814-30](#) [1424293-1](#) [HW4S-2TC10](#) [89721-12](#) [89804-08](#) [SSN](#) [RL01801](#) [ASD2L20N-LVO](#) [50051857-17](#)
[50099156-001-05](#) [51.155R-15200](#) [50058920-26](#) [CP-FA51](#) [CP-FA49](#) [ACCU-SC/L-3000](#) [PP9M](#) [PP87G](#) [PP86GA](#) [PP71G](#) [PP70G](#) [PP6G](#)
[PP62G](#) [PP58BL](#) [PP56G](#) [PP86GB](#) [PP77GA](#) [PP76G](#) [PP4M](#) [PP47G](#) [PP46G](#) [PP41M](#) [PP40G](#) [PP32G](#) [RD-20](#) [PP23M](#) [PP12G](#) [PORTAPRO](#)
[POM-2708](#) [PNB-2005](#) [3057.0012](#) [CV-075](#) [CV-140SB](#) [CV-150](#) [CV-150S](#) [214X20XK](#) [CV-180](#) [CV-200MB](#)