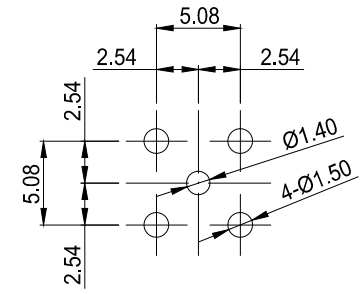
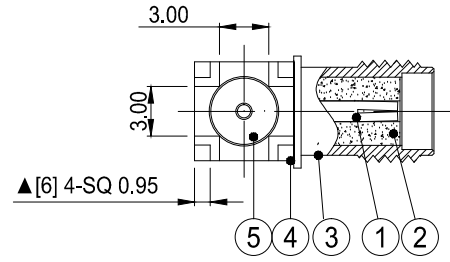
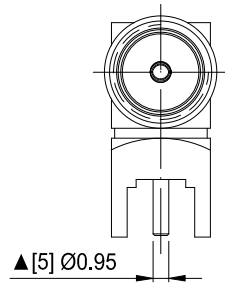
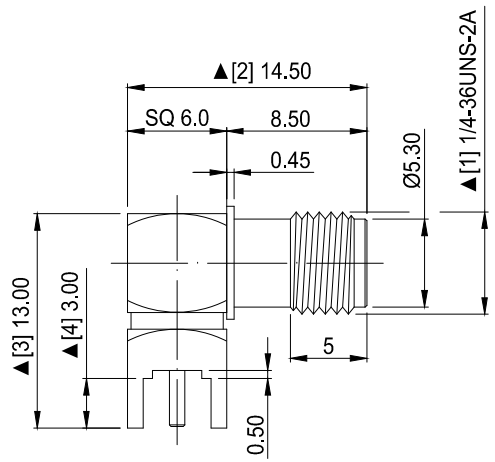


1	2	3	4	5	6	7	8
REVISION		DESCRIPTION		DATE	DRAFTER		
A0		FIRST RELEASE		19.12.04	Mark		



RECOMMENDED PCB LAYOUT DIMENSIONS

1. Electrical Characteristics
  - 1.1 Impedance: 50 Ohm
  - 1.2 Working Frequency: DC - 6 GHz
  - 1.3 S. W. R. : ≤1.5
  - 1.4 Working Voltage: 335V / max
  - 1.5 Insulation Resistance: 5000 Mohm
  - 1.6 Contact Resistance: Center Contact: 3mohm
  - 1.7 Outer Contact: ≤2 mohm
2. Environmental
  - 2.1 Working Temperature Range: - 55 . C ~ +125. C

5	INSULATOR_2	PTFE, WHITE	1
4	BODY_2	BRASS, GOLD	1
3	BODY_1	BRASS, GOLD	1
2	INSULATOR_1	PTFE, WHITE	1
1	CENTER CONTACT	FEMALE, BRASS, GOLD	1
No.	PART NAME	SPECIFICATION DESCRIPTION	Q'TY

GENERAL TOLERANCE: LINEAR: X ±0.30 X.X ±0.20 X.XX ±0.15 X.XXX ±0.10 ANGLE: X° ±4.00° X.X° ±3.00° X.XX° ±2.00° X.XXX° ±1.00°		<p>HJ-Tech 东莞市皇捷通讯科技有限公司 电话: 0769-83328111</p>	
FILE NAME: 零件图		TITLE: 射频连接器组件	
ENG/DATE: Mark/19.12.04		90度SMA母头母针FOR PCB, 镀金 SQ6.0*L14.5*H13.0, 螺母本体有0.45档板, 脚长3.0mm, 针OD:0.95mm	
CHE/DATE:		P/N: HJ-2LC15SF098	
APP/DATE:		UNIT: mm	SCALE: 1:1
		REVISION: A0	SHEET: 1/1

COMPLIANCE WITH THE REQUIREMENT:  RoHS;  HF;  SONY SS-00259;  OTHERS  
\*NO USING ESTRICTED AND BANNED SUBSTANCE

Autodesk

Autodesk

## X-ON Electronics

Largest Supplier of Electrical and Electronic Components

*Click to view similar products for [RF Connectors](#) / [Coaxial Connectors](#) category:*

*Click to view products by [HJ Tech](#) manufacturer:*

Other Similar products are found below :

[89674-0827](#) [6059674-1](#) [630059-000](#) [6501-1071-002](#) [6769](#) [7002-1541-010](#) [7002-1572-002](#) [7004-1512-000](#) [7009-1511-004](#) [7101-1541-010](#)  
[7101-1571-002](#) [7105-1521-002](#) [7145-1521-002](#) [7203-1571-003](#) [7209-1511-011](#) [7210-1511-040](#) [7242-1511-000](#) [7405-1521-005](#) [7405-1521-](#)  
[802](#) [804S01D04M040](#) [8527](#) [8547](#) [FS11V](#) [877931](#) [8808-1511-001](#) [9049-9513-000](#) [9074-9513-000](#) [PL11C-026](#) [PL40-36](#) [9408-1113-000](#)  
[980-8666-005](#) [11 SMA-50-2-6 / 111 NE](#) [11 SMA-50-3-6 / 111 NE](#) [11 SMA-50-2-6/111 NH](#) [1-201144-1](#) [120919](#) [R107003010W](#) [R112186000](#)  
[R113053000W](#) [R113082097](#) [R113236000](#) [R114083000](#) [R114670000W](#) [R123415000W](#) [R124072220W](#) [R124076320](#) [R124076450](#)  
[R124175123](#) [R124176123W](#) [R125075000W](#)