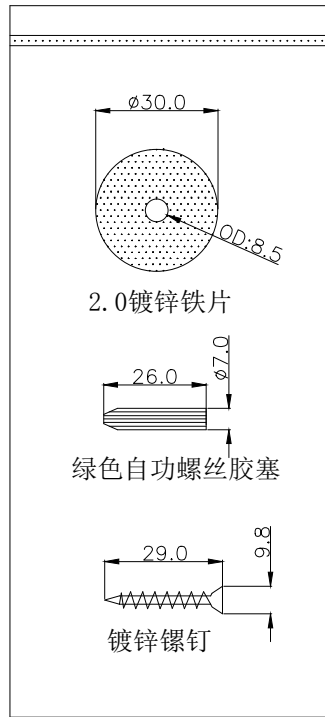
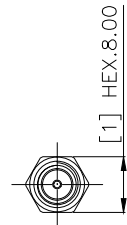


REV.	ECN NO.	LOCAS.	DESCRIPTION	DATE	DESIGN
A0			The first edition released	2020.05.12	Mark

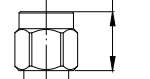
3个配件用小PE袋装在一起



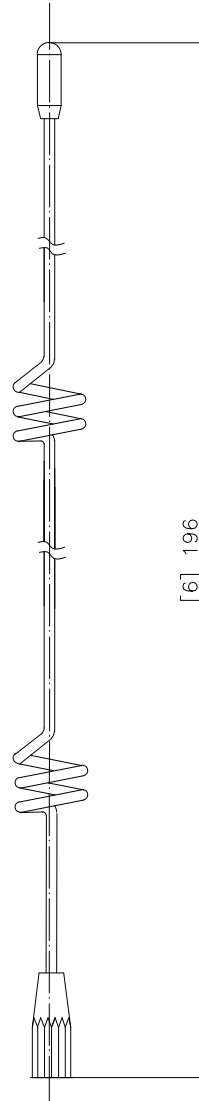
注意SMA是母针



[1] HEX:8.00  
[2] 8.40



[3] 3000±50mm



[6] 196

Note:

1. cable length: 3 M(RG174);
2. frequency range: 2400MHz~2500MHz
3. connector: SMA;
4. nominal impedance: 50 ohms;
5. VSWR: < 3.0:1 on the whole band;
6. radiation pattern: omnidirectional;
7. antenna gain: 1 dBi;
8. polarization: vertical;
9. operating temperature: -30° C to +90° C;
10. ROHS compliant;

NO	ITLM	DESCRIPTION	Q'TY
10	安装配件	吸盘铁片、胶塞、镙钉	1
9	2YT022	Ø10.0*L196mm 3圈*2 弹簧钢, 电着黑	1
8	天线帽子	Ø3.50 ABS 黑色	1
7	底膜	背胶底膜	1
6	磁铁	磁铁	1
5	天线底座	Ø30.0*Ø7.0*H28.0 ABS黑色	1
4	连接螺丝	M3连接螺丝	1
3	CABLE	RG174黑色线	1
2	热缩套管	黑色热缩管	1
1	SMA头	SMA公头母针, 表面镀金	1

HJ-Tech 东莞市皇捷通讯科技有限公司

DRAW NO.	DATE	DRAW NAME: 2.4GHz吸盘天线	
DESIGN: Mark	2020.06.11	RG174黑色线焊SMA公头母针+吸盘天线组件+安装配件L=3M	
CHECK:		FILE:	P/N NO. HJ-2.4G-SMA-RG174-3M-3E0301BK-008
APPROVED:		MODEL:	UNIT: mm SHEET: N/A
		REV. A0 SCALE N/A	

DIM	TOL	DIM	TOL
X.	±3.0	X'	±4.0'
X.X	±1.5	X.X'	±3.0'
X.XX	±0.05	X.XX'	±2.0'
X.XXX	±0.005	X.XXX'	±1.0'

COPLIANCE WITH THE REQUIEMENT  RoHS  HF  SONY00259  OTHER  
\* NO USING RESTRICTED AND BANNED SUBSTANCE

## X-ON Electronics

Largest Supplier of Electrical and Electronic Components

*Click to view similar products for [Antennas](#) category:*

*Click to view products by [HJ Technology](#) manufacturer:*

Other Similar products are found below :

[GAN30084EU](#) [930-033-R](#) [EXE902SM](#) [APAMPG-117](#) [MAF94383](#) [W6102B0100](#) [108-00014-50](#) [SPDA17RP918](#) [A09-F5NF-M](#)  
[RGFRA1903041A1T](#) [108-00016-050](#) [W3921B0100](#) [SIMNA-868](#) [SIMNA-915](#) [SIMNA-433](#) [W1049B090](#) [TRABT1560](#) [A75-001](#) [W3118A](#)  
[WTL2449CQ1-FRSMM](#) [CPL9C](#) [0600-00060](#) [GD5W-28P-NF](#) [MA9-7N](#) [GD53-25](#) [C37](#) [MAF94051](#) [FRX380](#) [MA9-5N](#) [B1322NR](#)  
[QWFTB120](#) [MAF94271](#) [MAF94300](#) [GPSMB301](#) [FG4403](#) [PSQ24495-91RSM](#) [5200232](#) [MIKROE-2393](#) [DA5-32RADOME](#) [5200227](#)  
[GPSCPM00](#) [W1049B030](#) [SPDA17RP918](#) [GPSCP00](#) [AN 303](#) [ANTDOM-05-01-WPM](#) [EXW30BNX](#) [OSCAR1A/5M/SMAM/S/S/31](#)  
[ALPHA4A/1M/SMAM/S/S/26](#) [OSCAR1A/10M/SMAM/S/S/31](#)