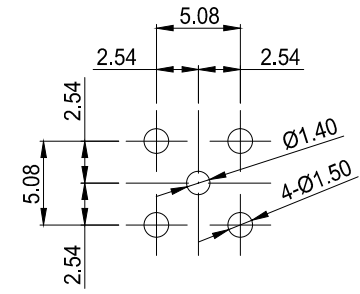
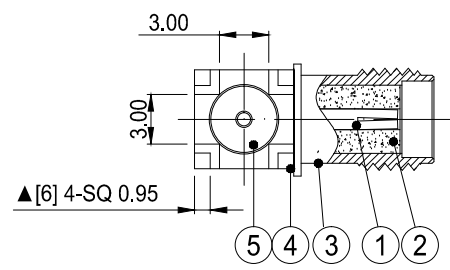
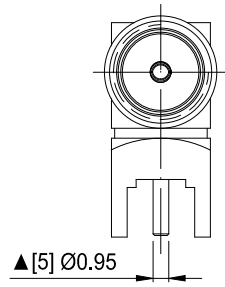
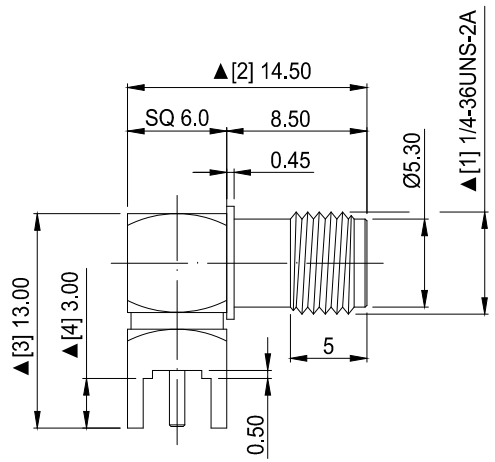


1	2	3	4	5	6	7	8
REVISION		DESCRIPTION		DATE	DRAFTER		
A0		FIRST RELEASE		19.12.04	Mark		



RECOMMENDED PCB LAYOUT DIMENSIONS

1. Electrical Characteristics
  - 1.1 Impedance: 50 Ohm
  - 1.2 Working Frequency: DC - 6 GHz
  - 1.3 S. W. R. : ≤1.5
  - 1.4 Working Voltage: 335V / max
  - 1.5 Insulation Resistance: 5000 Mohm
  - 1.6 Contact Resistance: Center Contact: 3mohm
  - 1.7 Outer Contact: ≤2 mohm
2. Environmental
  - 2.1 Working Temperature Range: - 55 . C ~ +125. C

5	INSULATOR_2	PTFE, WHITE	1
4	BODY_2	BRASS, GOLD	1
3	BODY_1	BRASS, GOLD	1
2	INSULATOR_1	PTFE, WHITE	1
1	CENTER CONTACT	FEMALE, BRASS, GOLD	1
No.	PART NAME	SPECIFICATION DESCRIPTION	Q'TY

GENERAL TOLERANCE: LINEAR: X ±0.30 X.X ±0.20 X.XX ±0.15 X.XXX ±0.10 ANGLE: X° ±4.00° X.X° ±3.00° X.XX° ±2.00° X.XXX° ±1.00°		<p>HJ-Tech 东莞市皇捷通讯科技有限公司 电话: 0769-83328111</p> <p>FILE NAME: 零件图 TITLE: 射频连接器组件</p> <p>ENG/DATE: Mark/19.12.04 90度SMA母头母针FOR PCB, 镀金 SQ6.0*L14.5*H13.0, 螺牙本体有0.45档板, 脚长3.0mm, 针OD:0.95mm</p> <p>CHE/DATE: P/N: HJ-2LC15SF098</p> <p>APP/DATE: UNIT: mm SCALE: 1:1 REVISION: A0 SHEET: 1/1</p>	
---	--	---	--

COMPLIANCE WITH THE REQUIREMENT:  RoHS;  HF;  SONY SS-00259;  OTHERS  
\*NO USING ESTRICTED AND BANNED SUBSTANCE

## X-ON Electronics

Largest Supplier of Electrical and Electronic Components

*Click to view similar products for [RF Connectors / Coaxial Connectors](#) category:*

*Click to view products by [HJ Technology](#) manufacturer:*

Other Similar products are found below :

[8915-1511-000](#) [89674-0827](#) [6001-7071-019](#) [6002-7051-003](#) [6059674-1](#) [619550-1](#) [630059-000](#) [M39012/25-3026](#) [M39030/3-01N](#) [6501-1071-002](#) [6769](#) [7002-1541-010](#) [7002-1572-002](#) [7003-1542-011](#) [7004-1512-000](#) [7009-1511-004](#) [7029-1511-060](#) [7101-1541-010](#) [7101-1571-002](#) [7105-1521-002](#) [7203-1571-003](#) [7209-1511-011](#) [7210-1511-015](#) [7210-1511-040](#) [7242-1511-000](#) [73216-2241](#) [73404-2300](#) [7405-1521-005](#) [7405-1521-802](#) [7406-1521-005](#) [8527](#) [8547](#) [FS11V](#) [877931](#) [8808-1511-001](#) [9049-9513-000](#) [9074-9513-000](#) [910A205F](#) [PL40-36](#) [PL40-5](#) [PL71-9](#) [980-8666-005](#) [1200690078](#) [1-201144-1](#) [120919](#) [R107003010W](#) [R110A172100](#) [R112186000](#) [R113053000W](#) [R113081000](#)