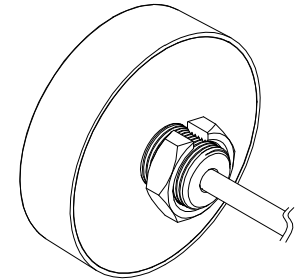
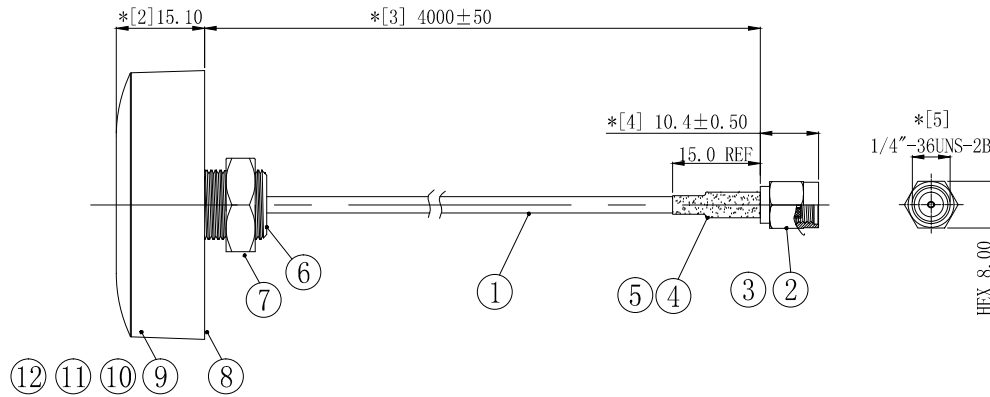
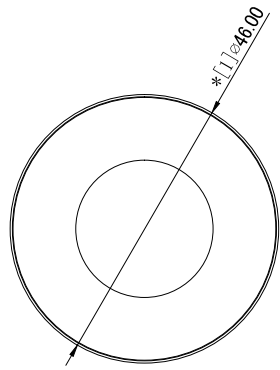


1	2	3	4	5	6	7	8
REVISION		DESCRIPTION		DATE	DRAFTER		
A0		首次发行		20.12.17	S. He		



3D 视图

13	2MH030	L10*W15mm*T9.0, EVA+双面背胶	3	---
12	2YG085	铜管, OD4.0 L10.0内孔3.2mm	1	---
11	2YP085	wifi 下层PCB, 带3M L300背胶, FR-4	1	---
10	2YP084	wifi 上层PCB, FR-4, OD41.2*T0.6mm	1	---
9	2SBKG3801-1	小平头蘑菇型胶体, 黑色抗紫外线OD:46.0*H:15.1mm	1	---
8	2SBKG3801-2	塑胶盖, 黑色抗紫外线OD:46.0mm	1	---
7	2LC00S-313	M12螺母, H:16.0*T:5.0mm	1	---
6	2LC00S-314	M12螺柱, OD:15*L:13.0mm	1	---
5	2TA035BK1-015	OD:3.5*L15.0mm, 无卤阻燃, 125H2普通型, 黑色	1	---
4	2LC15S-601	铜管, 镀镍OD:3.9*L9.0	1	---
3	2LC15PF047-5	SMA母针OD:1.5*L5.9mm 镀金	1	---
2	2LC15PM623-2	SMA公头 H8.0*L16.5镀金	1	---
1	2C5R17414BK1	RG174 coaxial-cable, BLACK	1	---
No.	PART NUMBER	PART NAME & DESCRIPTION	Q'TY	REMARKS

Technical requirements:

- 1 electrical characteristics: impedance: 50 Ω;
Applicable frequency range: 2.4GHz ~ 2.5GHz VSWR < 2.0;
2. Dimension inspection: [*] is the FAI test item; * As a key test item; ■ Controlled items for CPK.
3. Packaging specification: IPCS/ Bag
4. Environmental requirements: products and materials used must meet RoHS requirements.

COMPLIANCE WITH THE REQUIREMENT: ■ RoHS; □ HF; □ SONY SS-00259; □ OTHERS
*NO USING ESTRICTED AND BANNED SUBSTANCE

GENERAL TOLERANCE:

LINEAR:	
X	±2.00
X.X	±1.00
X.XX	±0.50
X.XXX	±0.30
ANGLE:	
X°	±4.00°
X.X°	±3.00°
X.XX°	±2.00°
X.XXX°	±1.00°

HJ-Tech 东莞市皇捷通讯科技有限公司

FILE NAME: product drawing
ENG/DATE: Mark/20.07.08

TITLE: wifi小平头蘑菇天线, RG174 线L4.0M

CHE/DATE:

P/N: HJ-Wifi-G174-SMA-L=4M

APP/DATE:

UNIT: mm SCALE: 1:1 REVISION: A0 SHEET: 1/1

X-ON Electronics

Largest Supplier of Electrical and Electronic Components

Click to view similar products for [Antennas](#) category:

Click to view products by [HJ Technology](#) manufacturer:

Other Similar products are found below :

[930-033-R](#) [EXE902SM](#) [APAMPG-117](#) [MAF94383](#) [W6102B0100](#) [108-00014-50](#) [SPDA17RP918](#) [A09-F5NF-M](#) [RGFRA1903041A1T](#) [108-00016-050](#) [W3921B0100](#) [SIMNA-868](#) [SIMNA-915](#) [SIMNA-433](#) [W1049B090](#) [TRABT1560](#) [W3118A](#) [WTL2449CQ1-FRSMM](#) [CPL9C](#) [0600-00060](#) [GD5W-28P-NF](#) [PAL90209H-FNF](#) [MA9-7N](#) [GD53-25](#) [C37](#) [MAF94051](#) [S9025PLSMF](#) [EXD420PL](#) [B1322NR](#) [MAF94271](#) [MAF94300](#) [GPSMB301](#) [FG4403](#) [MIKROE-2393](#) [DA5-32RADOME](#) [BB1442NR](#) [5200227](#) [GPSCPMM00](#) [W1049B030](#) [SPDA17RP918](#) [GPSCP00](#) [ANTDOM-05-01-WPM](#) [ANT-WP868SMA-Y](#) [EXW30BNX](#) [OSCAR1A/5M/SMAM/S/S/31](#) [ALPHA4A/1M/SMAM/S/S/26](#) [OSCAR1A/10M/SMAM/S/S/31](#) [OSCAR1A/20M/SMAM/S/S/31](#) [OSCAR40/5M/LL/SMAM/S/S/33](#) [TANGO41/1M/SMAM/S/S/32](#)