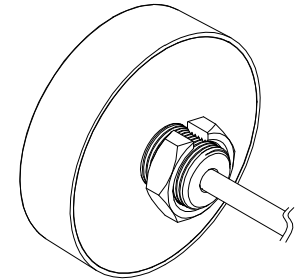
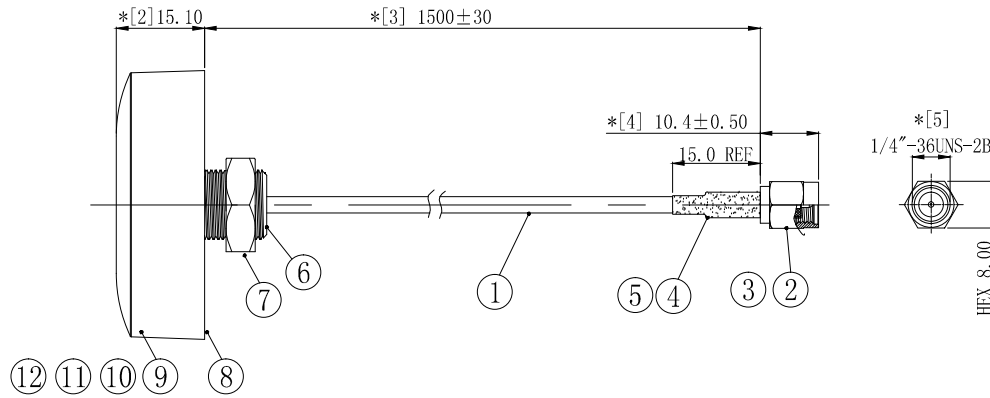
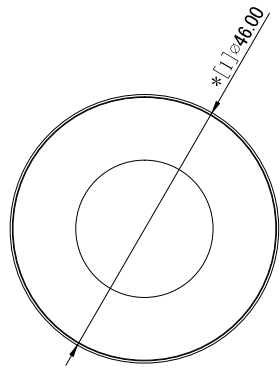
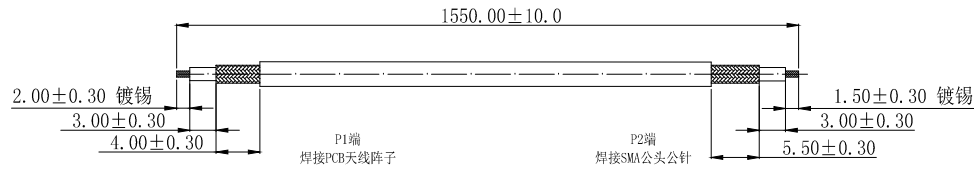


1	2	3	4	5	6	7	8
REVISION		DESCRIPTION		DATE	DRAFTER		
A0		FIRST RELEASE		19.11.21	Mark		



3D 视图



13	2MH030	L10*W15mm*T9.0, EVA+双面背胶	3	---
12	2YG085	铜管, OD4.0 L10.0内孔3.2mm	1	---
11	2YP085	wifi 下层PCB, 带3M L300背胶, FR-4	1	---
10	2YP084	wifi 上层PCB, FR-4, OD41.2*T0.6mm	1	---
9	2SBKG3801-1	小平头蘑菇塑胶体, 黑色抗紫外线OD:46.0*H:15.1mm	1	---
8	2SBKG3801-2	塑胶盖, 黑色抗紫外线OD:46.0mm	1	---
7	2LC00S-313	M12螺母, H:16.0*T:5.0mm	1	---
6	2LC00S-314	M12螺柱, OD:15*L:13.0mm	1	---
5	2TA035BK1-015	OD:3.5*L15.0mm, 无卤阻燃, 125H2普通型, 黑色	1	---
4	2LC15S-601	铜管, 镀镍OD:3.9*L9.0	1	---
3	2LC15PM623-5	SMA公针OD:1.5*L8.3mm 镀金	1	---
2	2LC15PM623-2	SMA公头 H8.0*L16.5镀金	1	---
1	2C5R17414BK1	RG174 coaxial-cable, BLACK	1	---
No.	PART NUMBER	PART NAME & DESCRIPTION	Q'TY	REMARKS

Technical requirements:

- 1 electrical characteristics: impedance: 50 Ω;
Applicable frequency range: 2.4GHz ~ 2.5GHz VSWR < 2.0;
2. Dimension inspection: [*] is the FAI test item; * As a key test item; ■ Controlled items for CPK.
3. Packaging specification: IPCS/ Bag
4. Environmental requirements: products and materials used must meet RoHS requirements.

COMPLIANCE WITH THE REQUIREMENT: ■ RoHS; □ HF; □ SONY SS-00259; □ OTHERS
*NO USING ESTRICTED AND BANNED SUBSTANCE

GENERAL TOLERANCE:

LINEAR:	
X	±2.00
X.X	±1.00
X.XX	±0.50
X.XXX	±0.30
ANGLE:	
X°	±4.00°
X.X°	±3.00°
X.XX°	±2.00°
X.XXX°	±1.00°

HJ-Tech 东莞市皇捷通讯科技有限公司

FILE NAME:
product drawing
ENG/DATE:
Mark/20.07.08

TITLE:
wifi小平头蘑菇天线, RG174 线L1.5M

CHE/DATE:

P/N:

HJ-wifi-RG174

APP/DATE:

UNIT:
mm



SCALE:
1:1

REVISION:
A0

SHEET:
1/1

X-ON Electronics

Largest Supplier of Electrical and Electronic Components

Click to view similar products for [Antenna Accessories](#) category:

Click to view products by [HJ Technology](#) manufacturer:

Other Similar products are found below :

[AN102800V1](#) [HKIT-MTA9101-001](#) [YMST4](#) [CC.001](#) [NMOHPCN518](#) [MB830](#) [MB825](#) [MB820](#) [LBT3800](#) [GRO](#) [172-00006](#) [W9909](#) [HKIT-MTA9100-001](#) [MABT8UM9](#) [HKIT-LPx-001](#) [QWRCB](#) [GPS-17519](#) [76002093](#) [G8SMI](#) [MABT8M](#)
[DELTA/MAGMOUNT/SMAFRP/SMAMRP/1M/19](#) [DELTA/MAGMOUNT/SMAFRP/SMAMRP/2M/19](#) [1.13-SMA-L=200mm](#) [1.13-SMA-L=300mm](#) [1.13-SMA-MHF-1](#) [PLUG-L=750mm](#) [FM2](#) [NS1535](#) [NS3035](#) [MB8](#) [HS34RB](#) [W9908](#) [SR4G031-150](#) [LBTB3400](#) [LBM9034](#)
[GBR8PI](#) [GB8](#) [G8PI](#) [BPXPHK](#) [ALLPMTP](#) [ALLPMTA](#) [LTE Antenna Kit](#) [SR4W030-150](#) [GPSMBMM](#) [2740504](#) [SR4G031-100](#) [2702198](#)
[SR4W030-100](#) [9091.99.0235](#) [LoRa Antenna](#) [EZ19](#)