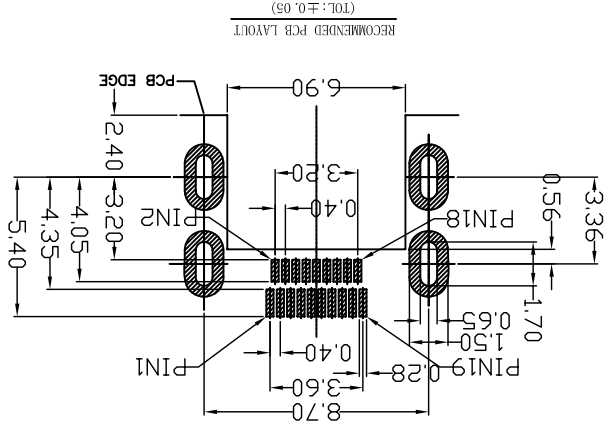


SCALE:1:1 SIZE: A4		UNIT: mm [inch]	
X: ±2 X.X' ±0.5'		X.XX ±0.15	
X.X ±0.30		X.XX ±0.25	
TOLERANCE:		X.X ±0.30	
DRAWN BY: 陈一鸣	DATE: 2014-02-23	CHECKED BY: 马跃	DATE: 2014-02-23
PART NAME: HDMI D TYPE 沉板1.0 四脚DIP		PART NO.: HYC04-HDMID19-100	
SHEET NO. 1 OF 1		DRAW NO.: HYC-HDMI13082107	

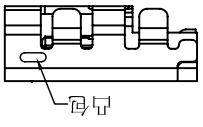
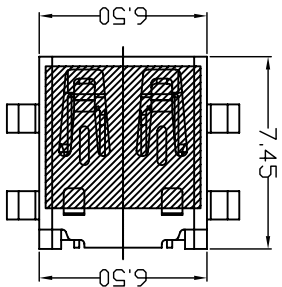
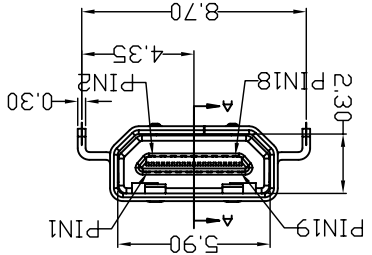
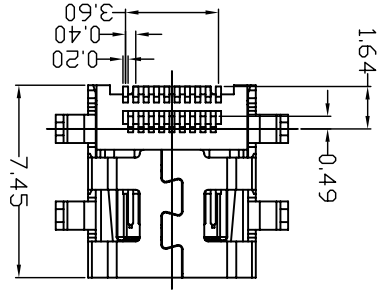
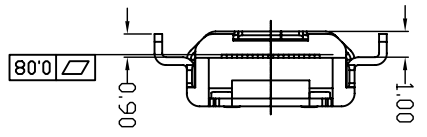
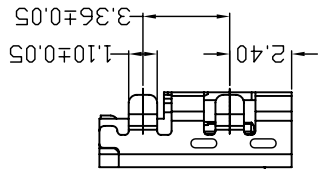
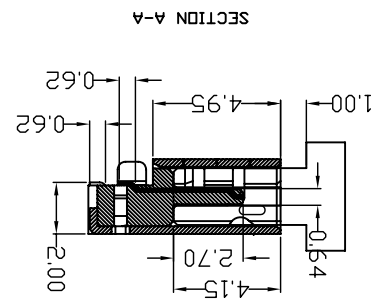
深圳市华宇创精密电子有限公司



NOTE:
 1. MATERIAL: HOUSING: HIGH TEMPERATURE THERMO PLASTIC
 UL94V-0, BLACK.
 CONTACTS: COPPER ALLOY.
 SHELL: COPPER ALLOY
 2. FINISHED
 CONTACTS: 1U" GOLD PLATED OVER ALL,
 30U" MIN. NICKEL UNDERPLATING OVER ALL
 SHIELD: 30U" MIN. NICKEL UNDERPLATING OVER ALL



PIN	Signal Assignment	PIN	Signal Assignment
1	Hot Plug Detect	2	Utility
3	TMDS Data2+ Shield	4	TMDS Data2+ Shield
5	TMDS Data2- Shield	6	TMDS Data2- Shield
7	TMDS Data1 Shield	8	TMDS Data1- Shield
9	TMDS Data0+ Shield	10	TMDS Data0 Shield
11	TMDS Data0-	12	TMDS Data0+
13	TMDS Clock Shield	14	TMDS Clock-
15	CEC	16	DDC/CEC Ground
17	SCL	18	SDA
19	+5V Power		



X-ON Electronics

Largest Supplier of Electrical and Electronic Components

Click to view similar products for [HDMI, Displayport & DVI Connectors](#) category:

Click to view products by [HOAUC](#) manufacturer:

Other Similar products are found below :

[1775247-3](#) [2-1932649-5](#) [30-1231](#) [30-528](#) [2069485-1](#) [30-504](#) [30-519](#) [30-542](#) [47648-2000](#) [2002-400](#) [TC142X](#) [1453G1](#) [769-103/021-000](#)
[1932649-1](#) [233-368NFG6-17NH](#) [G45A19071083HR](#) [233-360NF00-17NH](#) [CP30200GM3B](#) [HYC02-DVI29-371](#) [P136-06NHDV4KBP](#)
[CP30116](#) [LTWDID-29PFFS-SL8001](#) [46765-1301](#) [1211-0010-201-001](#) [47271-1004](#) [32-1121-BU](#) [DS1117-BN0-TME-002](#) [MHDR2A11004BP](#)
[EHHDMI2PKG](#) [1903015-3](#) [DS1114-BN0](#) [WPUSBAF](#) [500254-1931](#) [HDMR-19-01-F-SM](#) [47151-1071](#) [1747981-1](#) [0480372000](#) [0482580001](#)
[D121073-19](#) [472710111](#) [HDMI-S-RA6-SMT-MF-15](#) [P142-000-UP](#) [P134-003](#) [P120-08N](#) [KDMIX-FS1V-WS-B](#) [P142-000-UD](#) [10029449-](#)
[101RLF](#) [P132-000](#) [P130-000](#) [P142-06N-MICRO](#)