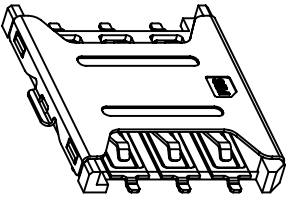


SIM pin assignment	
Pin#	Name
C1	VCC供电电压
C2	RST重置
C3	CLK时钟
C5	GND接地
C6	VPP程序电压
C7	I/O输入输出

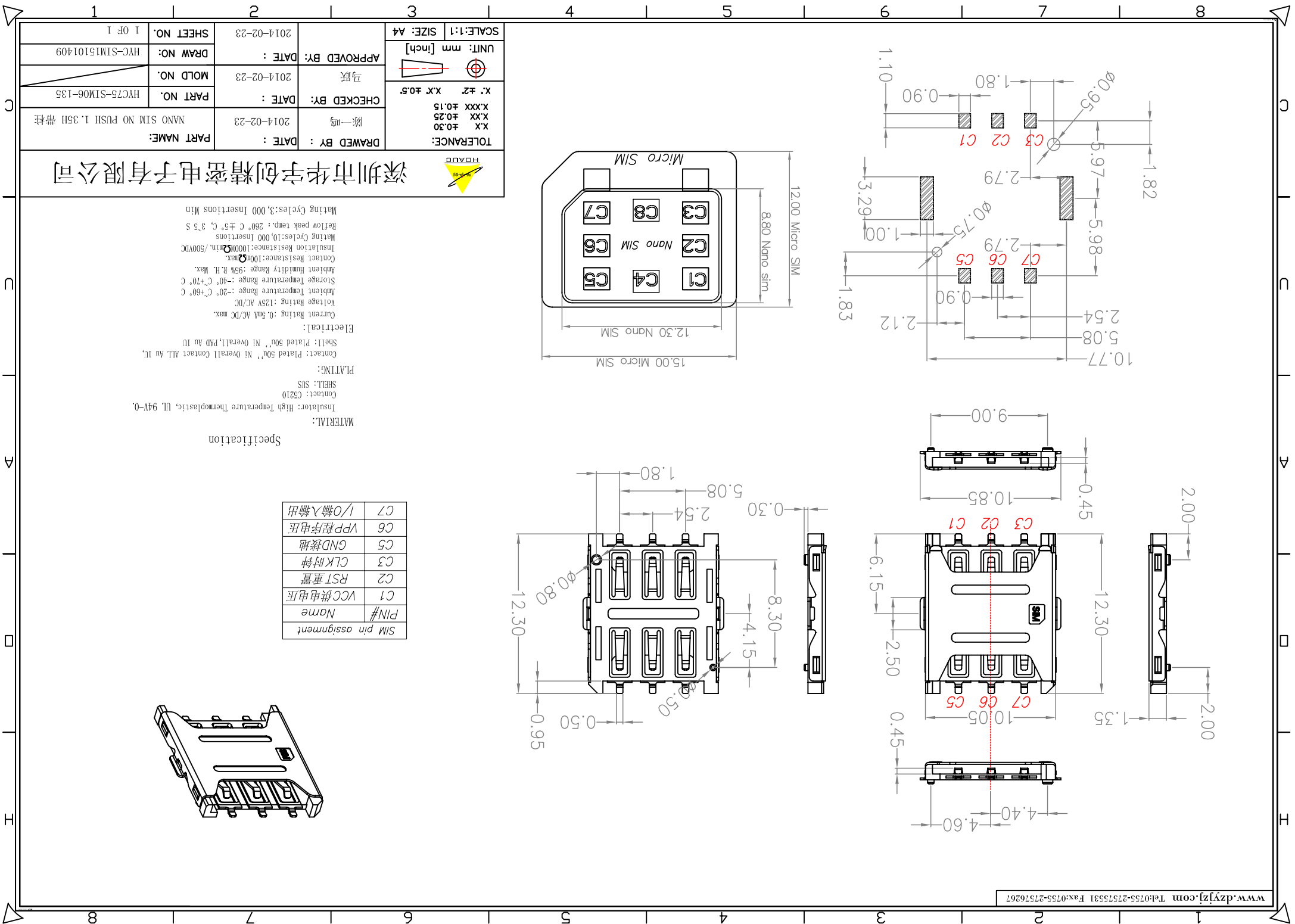
MATERIAL:
 Insulator: High Temperature Thermoplastic; UL 94V-0.
 Contact: C3210
 SHELL: SUS
PLATING:
 Contact: Plated 50u" Ni Overall Contact ALL Au 1u,
 Shell: Plated 50u" Ni Overall, PVD Au 1u

Electrical:
 Current Rating : 0.5mA AC/DC max.
 Voltage Rating : 125V AC/DC
 Ambient Temperature Range :-20° C+60° C
 Storage Temperature Range :-40° C+70° C
 Ambient Humidity Range :95% R.H. Max.
 Contact Resistance:100mΩmax.
 Insulation Resistance:1000MΩmin./500VDC
 Melting Cycles:10,000 Insertions
 Reflow peak temp.: 260° C ±5° C, 3' s
 Mating Cycles:3,000 Insertions Min



TOLERANCE: X.X ±0.30 X.XX ±0.25 X.XXX ±0.15	DRAWN BY: 陈一鸣	DATE: 2014-02-23	PART NAME: NANO SIM NO PUSH 1.35H 带柱
UNIT: mm [inch]	CHECKED BY: 马跃	DATE: 2014-02-23	PART NO.: HYC75-SIM06-135
SCALE: 1:1 SIZE: A4	APPROVED BY:	DATE: 2014-02-23	DRAW NO.: HYC-SIM15101409
X: ±2 X.X ±0.5		SHEET NO.: 1 OF 1	

深圳市华宇创精密电子有限公司



X-ON Electronics

Largest Supplier of Electrical and Electronic Components

Click to view similar products for [Standard Card Edge Connectors](#) category:

Click to view products by [HOAUC](#) manufacturer:

Other Similar products are found below :

[6565204-6](#) [PKC-156](#) [1437274-4](#) [147889-1](#) [1489165-4](#) [EBT156-12B1X](#) [EBT15622B2X](#) [EBT156-22R2W](#) [1-582587-1](#) [1-582589-1](#) [2-6437275-9](#) [284-0102-12100](#) [306022901000000](#) [307-012-502-202](#) [307-024-526-201](#) [307-056-520-300](#) [307-080-526-208](#) [1926088-2](#) [245-062-520-350](#) [287-0032-12101](#) [306-010-500-112](#) [306-028-525-102](#) [306-240-318](#) [307-036-502-202](#) [307-036-521-301](#) [307-072-526-202](#) [345-060-559-303](#) [368-004-520-201](#) [392-008-559-201](#) [534671-1](#) [5-530501-5](#) [341-240-317](#) [345-029-520-300](#) [345-030-500-301](#) [345-044-500-300](#) [345-220-058](#) [346-240-318](#) [357-030-526-201](#) [387-012-523-300](#) [395-044-520-300](#) [395-100-524-300](#) [50-12B-10](#) [50-6SN-5](#) [09-07-2032](#) [10035388-106LF](#) [10035388-802LF](#) [10115859-011LF](#) [10122859-009LF](#) [101269333204245CLF](#) [10127905-B04B24BLF](#)