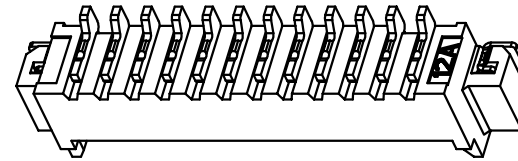
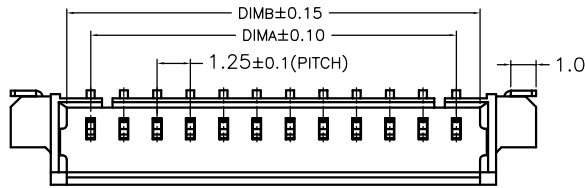
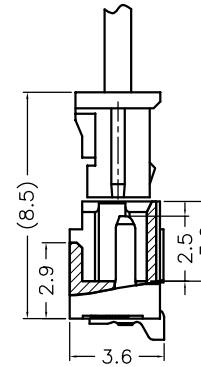
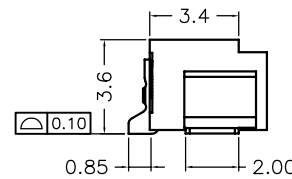
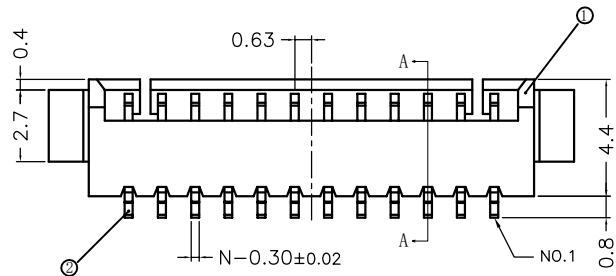


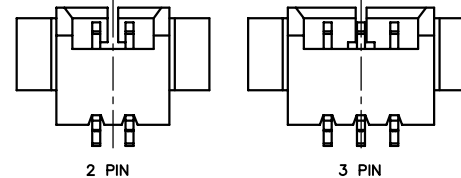
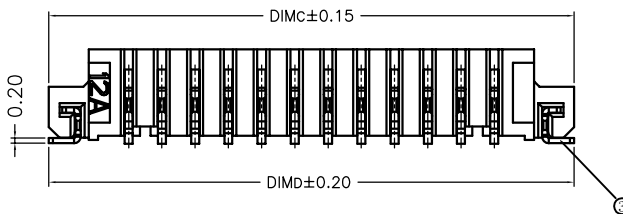
| 序号 | 品名 | 材质 |
|----|-------------|----------------|
| ① | 1.25 A型卧式胶芯 | LCP UL94V-0 本色 |
| ② | 1.25 A型卧式端子 | 铜合金/表面镀锡 |
| ③ | 1.25 A型卧式焊片 | 铜合金/表面镀锡 |



| CKT | DIM A | DIM B | DIM C | DIM D |
|-----|-------|-------|-------|-------|
| 2 | 1.25 | 3.05 | 7.25 | 7.25 |
| 3 | 2.50 | 4.30 | 8.50 | 8.50 |
| 4 | 3.75 | 5.55 | 9.75 | 9.75 |
| 5 | 5.00 | 6.80 | 11.00 | 11.00 |
| 6 | 6.25 | 8.05 | 12.25 | 12.25 |
| 7 | 7.50 | 9.30 | 13.50 | 13.50 |
| 8 | 8.75 | 10.55 | 14.75 | 14.75 |
| 9 | 10.00 | 11.80 | 16.00 | 16.00 |
| 10 | 11.25 | 13.05 | 17.25 | 17.25 |
| 11 | 12.50 | 14.30 | 18.50 | 18.50 |
| 12 | 13.75 | 15.55 | 19.75 | 19.75 |
| 13 | 15.00 | 16.80 | 21.00 | 21.00 |
| 14 | 16.25 | 18.05 | 22.25 | 22.25 |
| 15 | 17.50 | 19.30 | 23.50 | 23.50 |
| 16 | 18.75 | 20.55 | 24.75 | 24.75 |
| 17 | 20.00 | 21.80 | 26.00 | 26.00 |
| 18 | 21.25 | 23.05 | 27.25 | 27.25 |
| 19 | 22.50 | 24.30 | 28.50 | 28.50 |
| 20 | 23.75 | 25.55 | 29.75 | 29.75 |



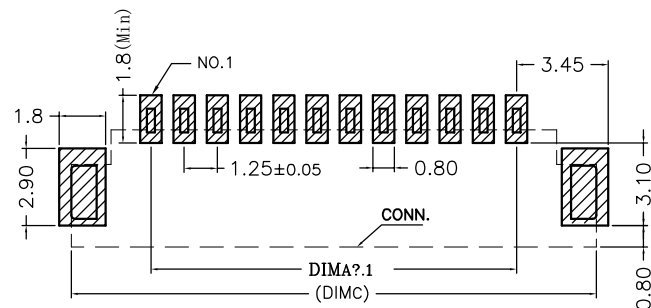
SECTION A-A



LOCK CONFIGURATION (锁扣结构)

技术指标:

1. 塑件表面应光洁、无毛边、无明显收缩、缺陷、裂纹等现象。
2. 锁扣窗口：2~3PIN为1个，≥4PIN为2个。
3. 温度范围：-40° C~85° C。
4. 额定电压：125V, AC。
5. 接触电阻：≤55mΩ (Initial) per contact, ≤20mΩ Change allowed。
6. 绝缘电阻：≥100MΩ。



适用线路板



深圳市华宇创精密电子有限公司

| | | | |
|---|--------------------|----------------------|--------------------------------|
| TOLERANCE: X.X ±0.30 X.XX ±0.25 X.XXX ±0.15 X' ±2' X.X' ±0.5' | DRAWN BY : 陈一鸣 | DATE : 2014-02-23 | PART NAME: 1.25PH 卧式贴片wafer |
| | CHECKED BY: 马跃 | DATE : 2014-02-23 | PART NO. : HYCW02-WFN-125B |
| UNIT: mm [inch] SCALE:1:1 SIZE: A4 | APPROVED BY: 邱敏 | DATE : 2014-02-23 | DRAW NO. : HYC-2112271004 |
| | | | SHEET NO. : 1 OF 1 |

X-ON Electronics

Largest Supplier of Electrical and Electronic Components

Click to view similar products for [Headers & Wire Housings](#) category:

Click to view products by [HOAUC](#) manufacturer:

Other Similar products are found below :

[57102-F02-18ULF](#) [58102-G61-06LF](#) [582553-1](#) [0009485154](#) [009176003701906](#) [0050291907](#) [00-9021-0611-00-339](#) [02.125.8002.8](#) [609-3404](#)
[61062-3](#) [622-0430](#) [622-3653LF](#) [63453-116](#) [636-1030](#) [636-1427](#) [636-3427](#) [636-4007](#) [641938-9](#) [65495-038](#) [65692-001LF](#) [65781-018](#) [65781-](#)
[047](#) [65817-015LF](#) [66207-023LF](#) [67016-026LF](#) [67095-007LF](#) [68631-112](#) [68645-018](#) [68648-049](#) [699319-000](#) [M90C108951C](#) [70.362.1628.0](#)
[70-4210](#) [70-4226B](#) [70-4853B](#) [707-5020](#) [707-5028](#) [71.350.2428.0](#) [71961-016LF](#) [733-134](#) [754199-000](#) [760-3052](#) [787-8014-00](#) [FCN-367T-](#)
[T012/H](#) [80.063.4001.1](#) [800-90-001-10-001000](#) [801-43-002-10-013000](#) [801-43-006-10-002000](#) [803-41-018-10-001000](#) [803-43-014-20-001000](#)