

注解:

1. 材料:

- 1-1 主体: LCP E4711+30%玻纤, UL94V-0, 黑色, 符合泰硕HF要求
- 1-2 端子: C5210-EH 料厚=0.12±0.02
- 1-3 铁壳: SUS301-3/4H 料厚=0.15±0.02

2. 电镀:

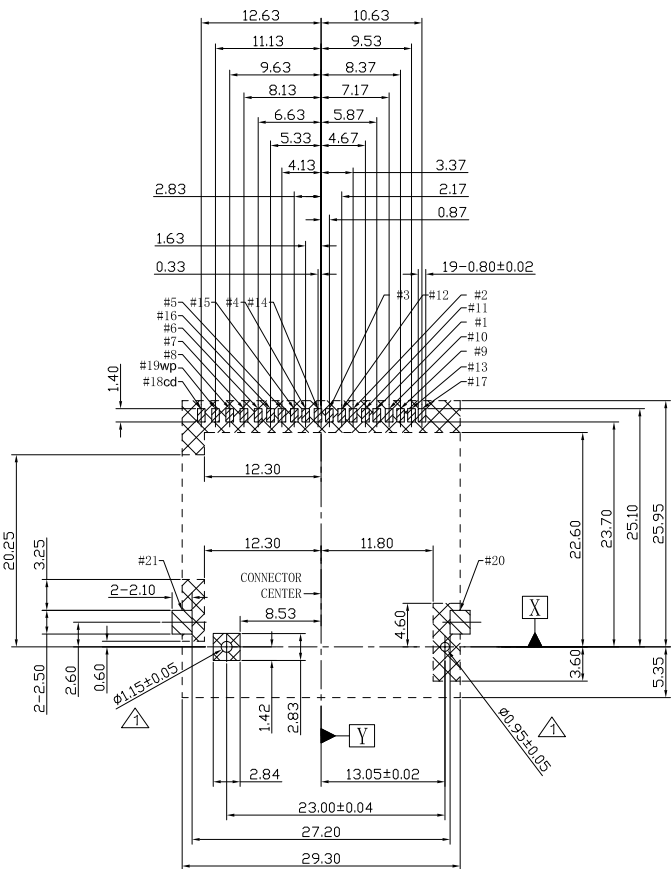
- 2-1 端子:
- 2-1-1 接触面积: 接触点镀金1U"以上, 镍底50U"以上.
- 2-1-2 焊锡面积: 镀锡80U"以上, 镍底50U"以上.
- 2-2 铁壳:
- 2-2-1 焊接面镀金1U"以上, 所有面积镍底镀50U"以上.

3. 焊锡面共面度最大0.1mm



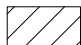


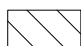
深圳市华宇创精密电子有限公司

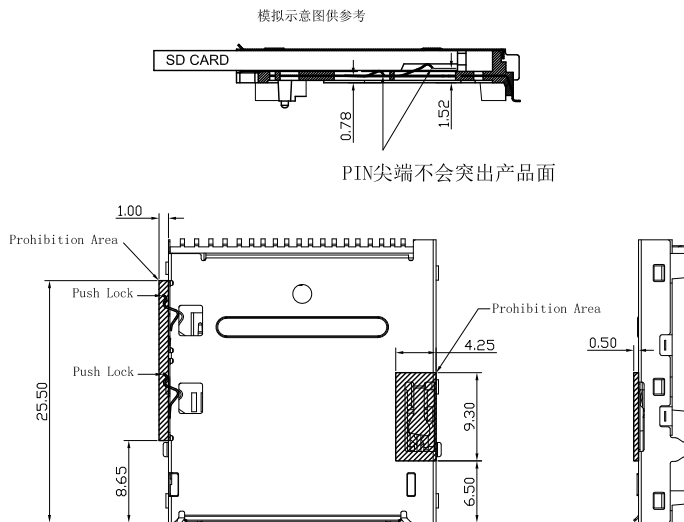
TOLERANCE: X.X ±0.30 X.XX ±0.25 X.XXX ±0.15 X.' ±2' X.X' ±0.5'	DRAWN BY : 陈一鸣	DATE : 2014-02-23	PART NAME: SD PUSH 4.0板上型 5.52H
	CHECKED BY: 马跃	DATE : 2014-02-23	PART NO. HYCW59-SD19-552B
UNIT: mm [inch] SCALE:1:1 SIZE: A4	APPROVED BY: 邱敏	DATE : 2014-02-23	DRAW NO: HYC-SD200903101
			SHEET NO. 1 OF 1



RECOMMEND P.C. BOARD LAYOUT (TOP VIEW)  
TOLERANCE UNLESS OTHERWISE SPEC  $\pm 0.05$

NOTES:

-  PAD AREA
-  NO PARTS AREA
-  KEEP OUT AREA
-  GND ONLY





NO.	SD NAME	USH-LL NAME
1	CD/DAT3	
2	CMD	
3	VSS1	VSS1
4	VDD	VDD1
5	CLK	
6	VSS2	VSS2
7	DAT0	RCLK+
8	DAT1	RCLK-
9	DAT2	
10		VSS3
11		DO+
12		DO-
13		VSS4
14		VDD2
15		D1-
16		D1+
17		VSS5
18	CD SW	
19	WP SW	
20	GND SW	
21	GND SW	

	W/P CONTACT		C/D CONTACT
	WRITE PROTECT POSITION	WRITE ENABLE POSITION	
CARD UNINSERTION	CLOSE	CLOSE	CLOSE
CARD HALF INSERTION	OPEN	OPEN	CLOSE
CARD INSERTION	CLOSE	OPEN	OPEN



深圳市华宇创精密电子有限公司

<b>TOLERANCE:</b> X.X $\pm 0.30$ X.XX $\pm 0.25$ X.XXX $\pm 0.15$ X' $\pm 2'$ X.X' $\pm 0.5'$	<b>DRAWN BY :</b> 陈一鸣	<b>DATE :</b> 2014-02-23	<b>PART NAME:</b> SD PUSH 4.0板上型 5.52H
	<b>CHECKED BY:</b> 马跃	<b>DATE :</b> 2014-02-23	<b>PART NO.</b> HYCW59-SD19-552B
  <b>UNIT: mm [inch]</b> <b>SCALE:1:1 SIZE: A4</b>	<b>APPROVED BY:</b> 邱敏	<b>DATE :</b> 2014-02-23	<b>MOLD NO.</b>
			<b>DRAW NO:</b> HYC-SD200903101
			<b>SHEET NO.</b> 1 OF 1

## X-ON Electronics

Largest Supplier of Electrical and Electronic Components

*Click to view similar products for [Memory Card Connectors](#) category:*

*Click to view products by [HOAUC](#) manufacturer:*

Other Similar products are found below :

[6407-249V-25273P](#) [6407-249V-25343P](#) [6426-201-21343](#) [69.920.0553.0](#) [MCR60A-98D-2.54DSA\(70\)](#) [809180410000000](#) [DM3AT-SF-PEJM5\(41\)](#) [IC11S-BUR-PNEJL\(71\)](#) [C70210M0083692](#) [2041353-2](#) [308-DS1P0811-192](#) [HM2P09PDR360N9LF](#) [10014744-011TLF](#) [11327-001](#) [11327-002](#) [NX1-32T-KT3K\(05\)](#) [95622-003LF](#) [84648-056HLF](#) [CCM03-3109 B LFT](#) [MS3116J10-6PW](#) [2309923-1](#) [61126-050CAHLF](#) [GTFP08432B1HR](#) [G85D1160022HHR](#) [SCE2MSDZN76A121SN](#) [10014744-011ALF](#) [10014744-011LF](#) [10057542-1211FLF](#) [10067972-000LF](#) [10067972-050LF](#) [10122302-20110LF](#) [G85D1162022HHR](#) [TF-05A](#) [M6014-12](#) [XKNANO-1412](#) [SMN-304-ARP6](#) [MIS11-S1F1-2000-A](#) [SMN-308-ARSP7](#) [MCS-302S-KT1B](#) [SMN-308-ACSP7](#) [K-DYX-008](#) [K-DYX-004](#) [C7024-03](#) [SMO-1030](#) [MCS-110-KT](#) [SIM-217](#) [SNO-1355-KT](#) [SMO-1025-P10](#) [SIM-211S-P6](#) [SNO-1440](#)