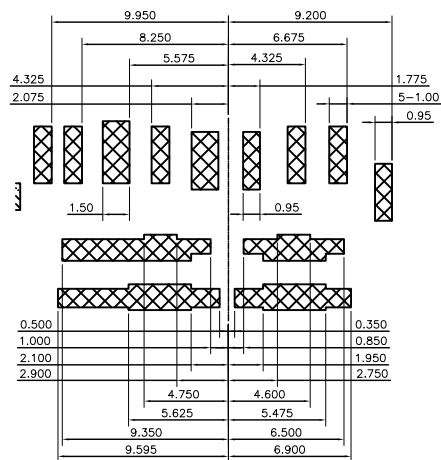
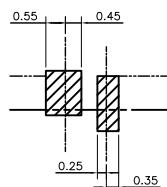


**■ PAD AREA**  
**□ KEEP OUT AREA**  
 No through hole gold, no via hole, no PAD area  
 GND PATTEN ONLY  
 GULE AREA

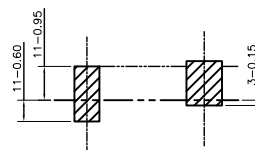
RECOMMENDED PCB LAYOUT (TOP VIEW)  
TOLERANCE UNLESS OTHERWISE SPEC  $\pm 0.05$



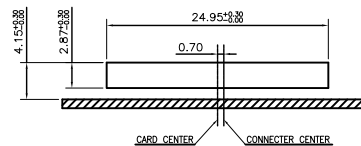
DETAIL J  
SCALE 2:1



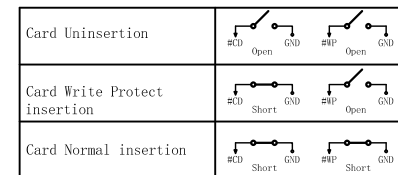
DETAIL G  
SCALE 4:1



DETAIL H  
SCALE 4:1



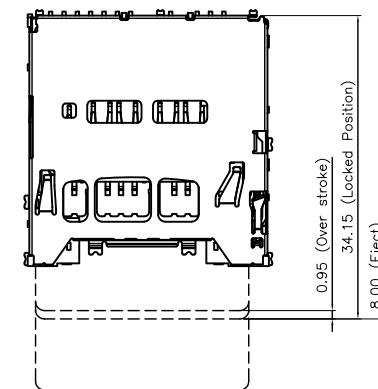
RECOMMENDED ID DIMENSION



Pin Assignment

Pin#	SD Mode	UHS II Mode	SD Express Card	Pin#	SD Mode	UHS II Mode	SD Express Card
#1	CD/DAT3		PERST#	#11		DO+	PCIe_Tx+
#2	CMD			#12		DO-	PCIe_Tx-
#3	VSS1	VSS1	VSS1	#13		VSS4	VSS4
#4	VDD	VDD1	VDD1	#14		VDD2	VDD2
#5	CLK			#15		D1-	PCIe_Rx-
#6	VSS2	VSS2	VSS2	#16		D1+	PCIe_Rx+
#7	DAT0	RCLK+	REFCLK+	#17		VSS5	VSS5
#8	DAT1	RCLK-	REFCLK-	#18			VDD3
#9	DAT2		CLKREQ#	CD			Card Detect
#10		VSS3	VSS3	WP			Write Protect

Function #10, #13, #17 were integrated into 2 pin inMechanical design, and compares to the Layout would be (#10, #13)



Card Push State

**深圳市华宇创精密电子有限公司**

<b>TOLERANCE:</b> X.X $\pm 0.30$ X.XX $\pm 0.25$ X.XXX $\pm 0.15$ X' $\pm 2'$ X.X' $\pm 0.5'$	<b>DRAWN BY :</b> 陈一鸣	<b>DATE :</b> 2014-02-23	<b>PART NAME:</b> SD 7.0 PUSH 4.0H SMT
	<b>CHECKED BY:</b> 马跃	<b>DATE :</b> 2014-02-23	<b>PART NO.</b> HYCW66-SD18-400B
 <b>UNIT: mm [inch]</b> <b>SCALE:1:1    SIZE: A4</b>	<b>APPROVED BY:</b> 邱敏	<b>DATE :</b> 2014-02-23	<b>DRAW NO:</b> HYC-2112291105
			<b>SHEET NO.</b> 1 OF 1

## X-ON Electronics

Largest Supplier of Electrical and Electronic Components

*Click to view similar products for [Memory Card Connectors](#) category:*

*Click to view products by [HOAUC](#) manufacturer:*

Other Similar products are found below :

[6407-249V-25273P](#) [6407-249V-25343P](#) [6426-201-21343](#) [69.920.0553.0](#) [MCR60A-98D-2.54DSA\(70\)](#) [809180410000000](#) [DM3AT-SF-PEJM5\(41\)](#) [IC11S-BUR-PNEJL\(71\)](#) [C70210M0083692](#) [2041353-2](#) [308-DS1P0811-192](#) [HM2P09PDR360N9LF](#) [10014744-011TLF](#) [11327-001](#) [11327-002](#) [NX1-32T-KT3K\(05\)](#) [95622-003LF](#) [84648-056HLF](#) [CCM03-3109 B LFT](#) [MS3116J10-6PW](#) [2309923-1](#) [61126-050CAHLF](#) [GTFP08432B1HR](#) [G85D1160022HHR](#) [SCE2MSDB76A121SN](#) [SCE2MSDZN76A121SN](#) [10014744-011ALF](#) [10014744-011LF](#) [10057542-1211FLF](#) [10067972-000LF](#) [10067972-050LF](#) [10122302-20110LF](#) [G85D1162022HHR](#) [TF-05A](#) [XKNANO-1412](#) [SMN-304-ARP6](#) [MIS11-S1F1-2000-A](#) [SMN-308-ARSP7](#) [MCS-302S-KT1B](#) [SMN-308-ACSP7](#) [K-DYX-008](#) [K-DYX-004](#) [HYCW126-TF18-150B](#) [C7024-03](#) [SMO-1030](#) [MCS-110-KT](#) [SIM-217](#) [SNO-1355-KT](#) [SMO-1025-P10](#) [SIM-211S-P6](#)