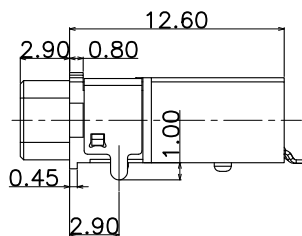
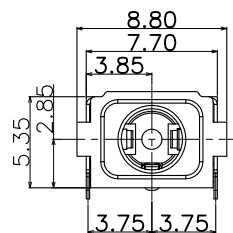
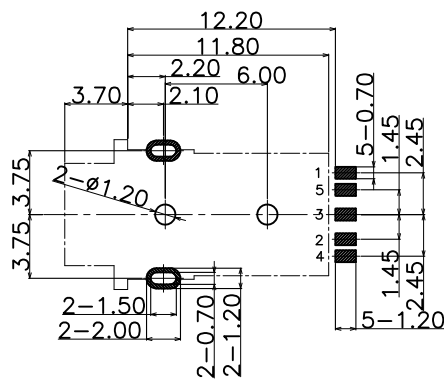
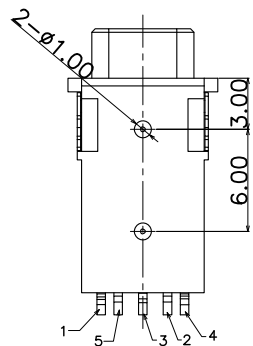


3D VIEW



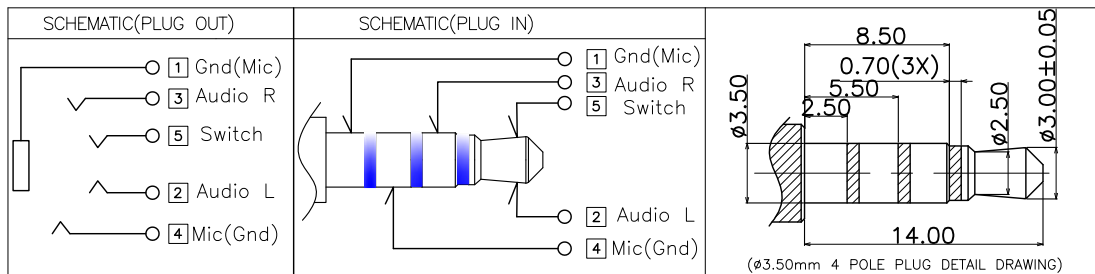
SPECIFICATION:

1. CURRENT RATING:DC 0.5A MAX.
- 2.VOLTAGE RATING:DC 12V.
- 3:CONTACT RESISTANCE:50mΩ MAX.
4. INSULATION RESISTANCE:100MΩ MIN. AT 500V DC.
5. WITHSTANDING VOLTAGE:500V AC FOR 1 MINUTE.
6. LIFE TEST:5000 CYCLES MIN,
7. MATING FORCE:3~30N,  
UNMATING FORCE:3~30N.
8. TEPROOF LEVEL: IPX7



RECOMMENDED P.C.B LAYOUT  
TOP VIEW

NO.	PART NAME	QTY	MATERIAL	DESCRIPTION	REMARK
⑦	Contact_5	⑤	1	Copper Alloy	CONTACT AREA: 1U"MIN SOLDER AREA:1U"MIN 50u" OVER ALL
⑥	Contact_4	④	1	Copper Alloy	
⑤	Contact_3	③	1	Copper Alloy	
④	Contact_2	②	1	Copper Alloy	
③	Contact_1	①	1	Copper Alloy	
②	Separator	1	HIGH TEMP	BLACK,UL94V-0	
①	Housing	1	HIGH TEMP	BLACK,UL94V-0	



深圳市华宇创精密电子有限公司

TOLERANCE: X.X ±0.30 X.XX ±0.25 X.XXX ±0.15 X.' ±2' X.X' ±0.5'	DRAWN BY : 陈一鸣	DATE : 2014-02-23	PART NAME: 防水耳机座 PJ-825
	CHECKED BY: 马跃	DATE : 2014-02-23	PART NO. : HYCW-PJ825-155B
UNIT: mm [inch] SCALE:1:1 SIZE: A4	APPROVED BY: 邱敏	DATE : 2014-02-23	DRAW NO. : HYC-2211021526
			SHEET NO. : 1 OF 1

## X-ON Electronics

Largest Supplier of Electrical and Electronic Components

*Click to view similar products for [DC Power Connectors](#) category:*

*Click to view products by [HOAUC](#) manufacturer:*

Other Similar products are found below :

[KLDX-SMT-0202-BPTR](#) [171-0722-E](#) [K596](#) [KLD-0201-BC](#) [4C6831AX](#) [10073976-112LF](#) [LCB60PW-M](#) [LCB30PW-M](#) [LCB60PB-M](#)  
[LCC30PB-M](#) [LCB50PW-M](#) [LCB50-M](#) [LCB60-F](#) [LCC30-M](#) [LCB40PW-M](#) [LCC30PW-M](#) [LCB50-F](#) [LCB40-F](#) [LCB30-F](#) [LCC40-M](#)  
[LCC40PB-M](#) [LCB40PB-M](#) [LCC40-F](#) [LCB60-M](#) [LCC40PW-M](#) [LCB50PB-M](#) [DC-002-100](#) [DC-031A-130](#) [DC-031A-100](#) [DC-003A-130](#)  
[DC-045-130](#) [DC-192-130](#) [DC-033-130](#) [DC-011-100](#) [DC-002F-130](#) [DC-002-130](#) [DB-14-2F](#) [DC-183B](#) [DC-060-04A](#) [DC-099-200](#) [DC-015-](#)  
[250-A](#) [DC-016-200-A](#) [DC-005A-200](#) [DC-044A-200](#) [DC-088-200](#) [DC-022A-200](#) [DC-038-150](#) [DC-012A-250](#) [DC-005C-130](#) [DC-012A-200](#)