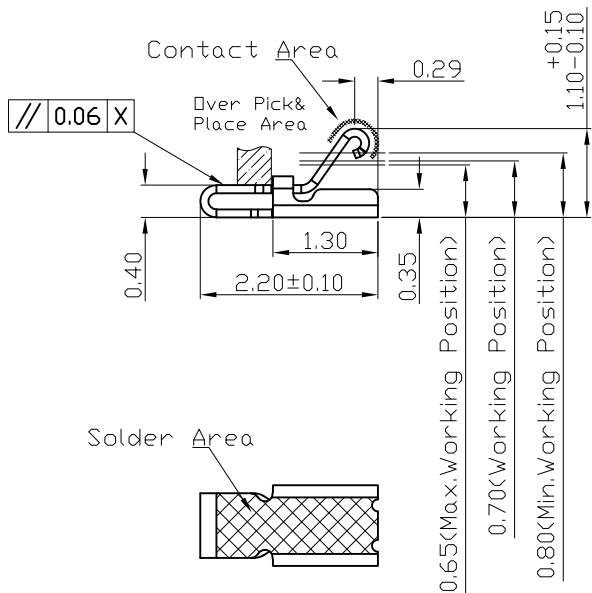
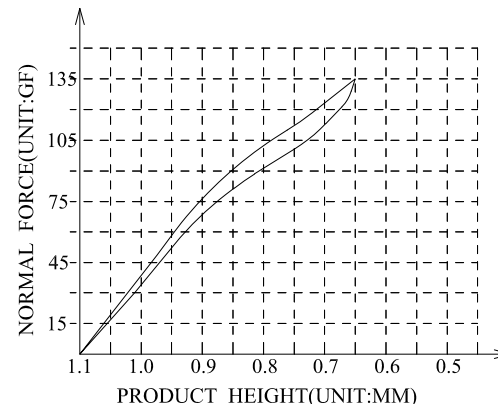
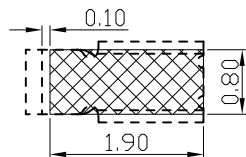
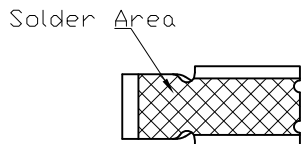
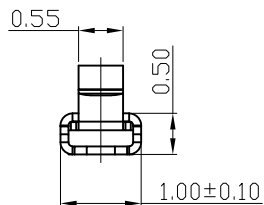


3D View

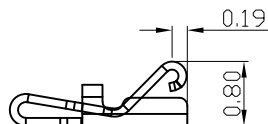


-X-  
0.08 X

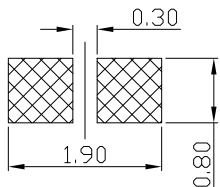


RECOMMENDED PCB LAYOUT

TOLERANCE:±0.05MM  
(FOR REFERENCE ONLY)



(For Reference Only)  
Stated At Compression



METAL MASK T=0.08

TOLERANCE:±0.05MM  
(FOR REFERENCE ONLY)

NOTES:

1: MATERIAL

1-1: SUS-304 THICKNE=0.10MM

2: SPECIFICATIONS

2-1: RATED CURRENT: 1.0A

2-2: VOLTAGE RATING: 1.5V

2-3: CONTACT RESISTANCE: 80mΩ/MAX

2-4: WELDING THRUST: ≥3KG

2-5: OPERATING TEMPERATURE: -40° C~+85° C

3: DURABILITY: 1500 CYCLES

4: SALT SPRAY TIME: 24H

5: ELECTROPLATE: THE NICKEL-PLATED SUBSTRATE IS 50u" MIN

6: REQUIREMENTS

6-1: TERMINAL TO EAT FULL TIN, NOT PEELING,  
WELDING OBVIOUS COLOR AND OTHER ADVERSE

6-2: ROHS, REACH, HF HALOGER ADVERSE OF DOMESTIC  
AND INTERNATIONAL ENVIRONMENTAL REQUIREMENTS



深圳市华宇创精密电子有限公司

|  |                           |                             |  |
|--|---------------------------|-----------------------------|--|
| <b>TOLERANCE:</b><br>X.X ±0.30<br>X.XX ±0.25<br>X.XXX ±0.15<br>X' ±2' X.X' ±0.5' | <b>DRAWN BY :</b><br>陈一鸣  | <b>DATE :</b><br>2014-02-23 | <b>PART NAME:</b><br>天线弹片 L2. 20*W1. 0*H1. 1 |
|  | <b>CHECKED BY:</b><br>马跃  | <b>DATE :</b><br>2014-02-23 | <b>PART NO.</b><br>HYCW-TXT221011            |
| UNIT: mm [inch]<br>SCALE:1:1 SIZE: A4  | <b>APPROVED BY:</b><br>邱敏 | <b>DATE :</b><br>2014-02-23 | <b>DRAW NO:</b><br>HYC-2406061257            |
|  |                           |                             |  |

## X-ON Electronics

Largest Supplier of Electrical and Electronic Components

*Click to view similar products for [Circuit Board Hardware - PCB category](#):*

*Click to view products by [HOAUC manufacturer](#):*

Other Similar products are found below :

[8919-0-00-15-00-00-03-0](#) [5970-1-15-01-32-14-04-0](#) [MKU 1 BLACK](#) [MLN 150/1 BLACK](#) [8579-1-15-15-11-27-10-0](#) [PRUEF 1 RED](#) [PRUEF 2 RED](#) [PW1616](#) [MPS 1 BLACK](#) [1548-103](#) [2317-2-00-50-00-00-07-0](#) [2506-2-00-50-00-00-07-0](#) [SCREWCLAMP EASY2](#) [SCREWCLAMPEASY750GEO](#) [9873-0-15-80-02-80-10-0](#) [2104-2-01-80-00-00-07-0](#) [PG-9](#) [2308-4-00-44-00-00-07-0](#) [2314-2-01-50-00-00-07-0](#) [2352-3-01-50-00-00-07-0](#) [2506-3-00-50-00-00-07-0](#) [251-103](#) [3330-1-00-15-00-00-03-0](#) [430-107](#) [TO-100-030](#) [TO-16-030E](#) [TO-203-040E](#) [TO-24-100](#) [TO-64-030](#) [5062-0-00-21-00-00-33-0](#) [5108](#) [325-102](#) [WLPL-141](#) [Z4.102.1680.0](#) [5119](#) [0153-4-15-80-30-27-04-0](#) [0252-0-15-01-32-27-10-0](#) [0253-0-15-15-30-27-10-0](#) [0255-0-15-01-30-27-04-0](#) [0290-0-00-15-00-00-03-0](#) [0309-2-15-80-47-27-10-0](#) [02-41](#) [0405-0-15-80-34-27-04-0](#) [0569-0-15-15-11-27-10-0](#) [0579-0-15-01-11-27-10-0](#) [0489-0-15-01-11-27-04-0](#) [0489-2-15-15-11-27-04-0](#) [0553-1-15-01-11-27-10-0](#) [0553-2-15-80-11-84-10-0](#) [0554-0-15-15-11-27-10-0](#)