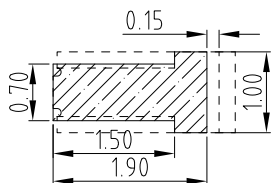
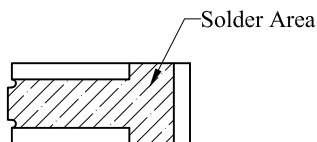
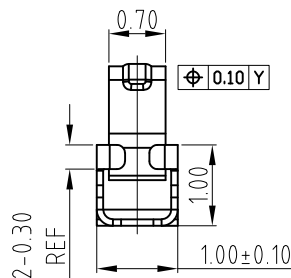
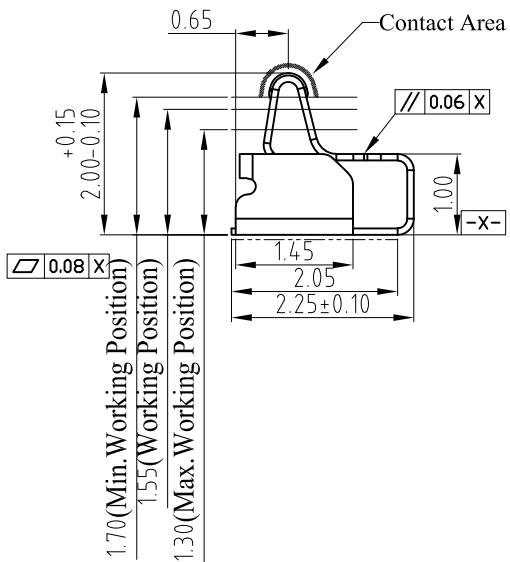
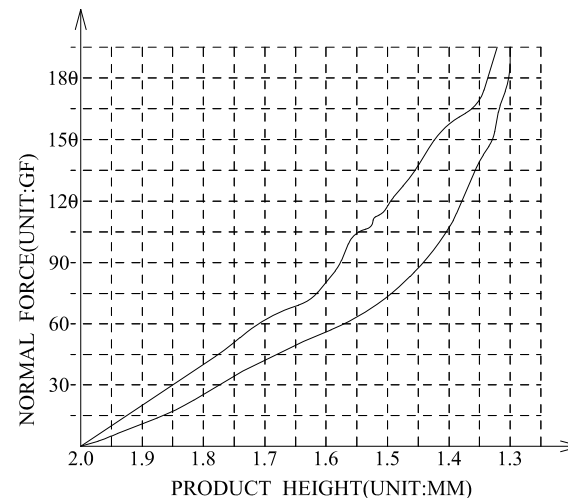
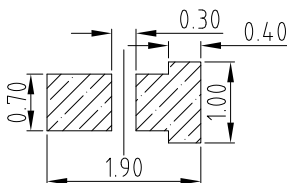


3D View



RECOMMENDED PCB LAYOUT
TOLERANCE:±0.05MM
(FOR REFERENCE ONLY)



METAL MASK T=0.08
TOLERANCE:±0.05MM
(FOR REFERENCE ONLY)

NOTES:

- 1:MATERIAL
 - 1-1: SUS-301 THICKNE=0.08MM
- 2:SPECIFICATIONS
 - 2-1: RATED CURRENT: 1.0A
 - 2-2: VOLTAGE RATING: 1.5V
 - 2-3: CONTACT RESISTANCE: 80mΩ/MAX
 - 2-4: WELDING THRUST: ≥3KG
 - 2-5: OPERATING TEMPERATURE: -40°C~+85°C
- 3:DURABILITY: 1500 CYCLES
- 4:SALT SPRAY TIME: 24H
- 5:ELECTROPLATE: THE NICKEL-PLATED SUBSTRATE IS 50u" MIN
- 6:REQUIREMENTS
 - 6-1:TERMINAL TO EAT FULL TIN,NOTPEELING, WELDING OBVIOUS COLOR AND OTHED ADVERSE
 - 6-2:ROHS、REACH、HF HALOGER ADVERSE OF DOMESTIC AND INTERNATIONAL ENVIRONMNTAL REQUIREMENTS



深圳市华宇创精密电子有限公司

TOLERANCE: X.X ±0.30 X.XX ±0.25 X.XXX ±0.15 X: ±2' X.X' ±0.5'	DRAWN BY : 陈一鸣	DATE : 2014-02-23	PART NAME: 天线弹片 L2. 25*W1. 0*H2. 00
	CHECKED BY: 马跃	DATE : 2014-02-23	PART NO. HYCW-TXT2251020A
UNIT: mm [inch] SCALE:1:1 SIZE: A4	APPROVED BY: 邱敏	DATE : 2014-02-23	DRAW NO: HYC-24060062028
			SHEET NO. 1 OF 1

X-ON Electronics

Largest Supplier of Electrical and Electronic Components

Click to view similar products for HOAUC manufacturer:

Other Similar products are found below :

[2685Y-214CNG1SNA01](#) [HYCW01-CF50-395B](#) [2543U-212CNG1SNT01](#) [2543U-140CNG1SNT01](#) [HYC42-HDR15B-889](#) [2685Y-105CNG1SNA01](#) [HYCW09-SMAW1300-1450B](#) [HYCW126-TF18-150B](#) [HYCW29-CF13-375B](#) [HYCW31-CF21-470B](#) [HYCW22-CF21-475B](#) [HYCW30-CF21-470B](#) [HYCW06-XQD21-530B](#) [HYCW66-SD18-400B](#) [HYCW76-SD19-313B](#) [HYCW59-SD19-552B](#) [HYCW03-MSD18-145B](#) [HYCW-PJ1837-146B](#) [HYCW02-MSD18-130B](#) [HYCW-DC1852-250B](#) [HYC13-SIM07-135](#) [HYCW-DC1839-130B](#) [HYCW399-USBC24-219B](#) [HYCW33-SD11-288B](#) [HYCW396-USBC16-712B](#) [HYCW401-USBC24-864B](#) [HYCW-PJ1838-140B](#) [HYCW-PJ1843-147B](#) [HYCW-PJ825-155B](#) [HYCW-PJ1831-186B](#) [HYCW-PJ1850-126B](#) [2343U-110CNG1SNT01](#) [HYCW263-USBC04-850B](#) [2543U-102CNG1SNT01](#) [HYCW412-USBC16-065B](#) [HYCW400-USBC24-085B](#) [HYCW23-SMAW1146-1650B](#) [HYCW406-USBC16-785B](#) [HYCW64-SD11-165B](#) [HYCW394-USBC16-113B](#) [HYCW403-USBC16-785B](#) [HYCW395-USBC16-085B](#) [HYCW02-WF04-125B](#) [HYCW404-USBC16-100B](#) [HYCW17-SMAW1300-1700B](#) [HYCW407-USBC24-864B](#) [HYCW22-SMAW1253-1750B](#) [HYCW408-USBC24-864B](#) [HYCW20-SAMW1765-2250B](#) [HYCW18-SMAW1300-2000B](#)