

**MEDIUM, TYPE 1**

**INDUSTRY STANDARDS**

 UL 50, 50E Listed; Type 1; File No. E27567  
 cUL Listed per CSA C22.2 No 40; Type 1; File No. E27567

 NEMA/EEMAC Type 1  
 CSA, File 42184: Type 1  
 IEC 60529, IP30

**APPLICATION**

These enclosures have a size range of 16 x 12 x 6-in. to 36 x 30 x 12-in. and meet basic functionality requirements for applications that do not require oil- or dust-tight enclosures.

**FEATURES**

- Doors have butt hinges
- Collar studs provided for mounting optional panel
- Slotted flush latches; optional latches available
- Mounting holes on back of enclosure

**SPECIFICATIONS**

- 14 or 12 gauge steel

**FINISH**

ANSI 61 gray polyester powder paint finish inside and out over pretreated surfaces. Optional solid panels are white and optional perforated panels are gray.

**ACCESSORIES**

 See also *Accessories*.

- T-Handle Latch and Keyed Cylinder Lock Kits
- Electric Heater
- Electrical Interlocks
- Grounding Device
- Panels for Medium Type 1 Enclosures
- Rack Mounting Angles - U Style (Type RA)
- T-Handle Latch and Keyed Cylinder Lock Kits
- Touch-Up Paint
- Steel and Stainless Steel Window Kits

**BULLETIN: A1M**

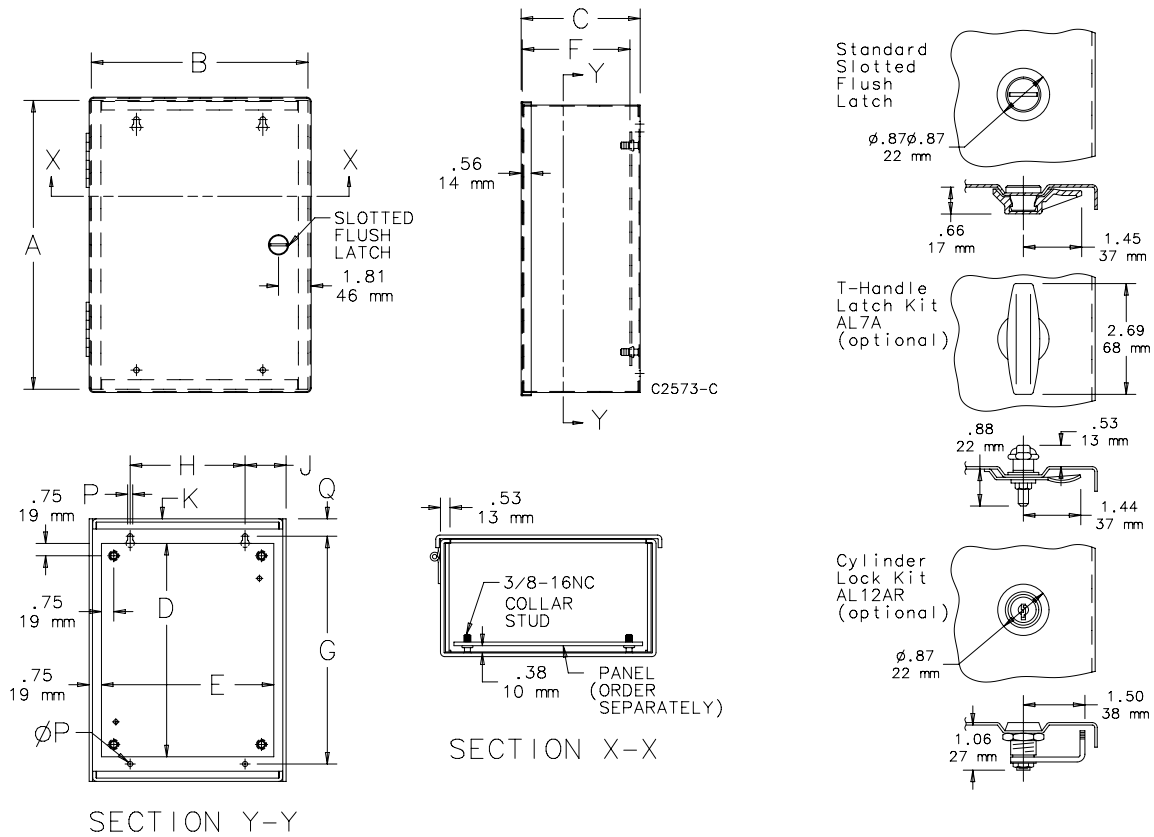
## Standard Product

Catalog Number	AxBxC in./mm	Panel	Perforated Panel	Panel Size		Panel Gauge	G in./mm	H in./mm	J in./mm	Q in./mm	P in./mm	F in./mm	K in./mm
				D x E in./mm									
A16N12ALP	16.00 x 12.00 x 6.62 406 x 305 x 168	A16N12MP	A16N12MPP	13.00 x 10.50	14	13.88	7.00	2.50	1.06	0.31	6.00	1.50	
				330 x 267	353	178	64	27	8	152	38		
A16N16ALP	16.00 x 16.00 x 6.62 406 x 406 x 168	A16N16MP	A16N16MPP	13.00 x 14.50	14	13.88	11.00	2.50	1.06	0.31	6.00	1.50	
				330 x 368	353	279	64	27	8	152	38		
A16N20ALP	16.00 x 20.00 x 6.62 406 x 508 x 168	A16N20MP	A16N20MPP	13.00 x 18.50	14	13.88	15.00	2.50	1.06	0.31	6.00	1.50	
				330 x 470	353	381	64	27	8	152	38		
A20N16ALP	20.00 x 16.00 x 6.62 508 x 406 x 168	A20N16MP	A20N16MPP	17.00 x 14.50	14	17.88	11.00	2.50	1.06	0.31	6.00	1.50	
				432 x 368	454	279	64	27	8	152	38		
A20N20ALP	20.00 x 20.00 x 6.62 508 x 508 x 168	A20N20MP	A20N20MPP	17.00 x 18.50	14	17.88	15.00	2.50	1.06	0.31	6.00	1.50	
				432 x 470	454	381	64	27	8	152	38		
A24N16ALP	24.00 x 16.00 x 6.62 610 x 406 x 168	A24N16MP	A24N16MPP	21.00 x 14.50	14	21.88	11.00	2.50	1.06	0.31	6.00	1.50	
				533 x 368	556	279	64	27	8	152	38		
A24N20ALP	24.00 x 20.00 x 6.62 610 x 508 x 168	A24N20MP	A24N20MPP	21.00 x 18.50	14	21.88	15.00	2.50	1.06	0.31	6.00	1.50	
				533 x 470	556	381	64	27	8	152	38		
A24N24ALP	24.00 x 24.00 x 6.62 610 x 610 x 168	A24N24MP	A24N24MPP <sup>a</sup>	21.00 x 22.50	12	21.88	19.00	2.50	1.06	0.31	6.00	1.50	
				533 x 572	556	483	64	27	8	152	38		
A30N24ALP	30.00 x 24.00 x 6.62 762 x 610 x 168	A30N24MP	A30N24MPP <sup>a</sup>	26.00 x 22.50	12	27.50	16.75	3.62	1.25	0.44	6.00	2.00	
				660 x 572	699	425	92	32	11	152	51		
A36N24ALP	36.00 x 24.00 x 6.62 914 x 610 x 168	A36N24MP	A36N24MPP <sup>a</sup>	32.00 x 22.50	12	33.50	16.75	3.62	1.25	0.44	6.00	2.00	
				813 x 572	851	425	92	32	11	152	51		
A36N30ALP	36.00 x 30.00 x 6.62 914 x 762 x 168	A36N30MP	A36N30MPP <sup>a</sup>	32.00 x 28.50	12	33.50	22.75	3.62	1.25	0.44	6.00	2.00	
				813 x 724	851	578	92	32	11	152	51		
A16N12BLP	16.00 x 12.00 x 8.62 406 x 305 x 219	A16N12MP	A16N12MPP	13.00 x 10.50	14	13.88	7.00	2.50	1.06	0.31	8.00	1.50	
				330 x 267	353	178	64	27	8	203	38		
A20N12BLP	20.00 x 12.00 x 8.62 508 x 305 x 219	A20N12MP	A20N12MPP	17.00 x 10.50	14	17.88	7.00	2.50	1.06	0.31	8.00	1.50	
				432 x 267	454	178	64	27	8	203	38		
A20N16BLP	20.00 x 16.00 x 8.62 508 x 406 x 219	A20N16MP	A20N16MPP	17.00 x 14.50	14	17.88	11.00	2.50	1.06	0.31	8.00	1.50	
				432 x 368	454	279	64	27	8	203	38		
A20N20BLP	20.00 x 20.00 x 8.62 508 x 508 x 219	A20N20MP	A20N20MPP	17.00 x 18.50	14	17.88	15.00	2.50	1.06	0.31	8.00	1.50	
				432 x 470	454	381	64	27	8	203	38		
A24N20BLP	24.00 x 20.00 x 8.62 610 x 508 x 219	A24N20MP	A24N20MPP	21.00 x 18.50	14	21.88	15.00	2.50	1.06	0.31	8.00	1.50	
				533 x 470	556	381	64	27	8	203	38		
A24N24BLP	24.00 x 24.00 x 8.62 610 x 610 x 219	A24N24MP	A24N24MPP <sup>a</sup>	21.00 x 22.50	12	21.88	19.00	2.50	1.06	0.31	8.00	1.50	
				533 x 572	556	483	64	27	8	203	38		
A30N20BLP	30.00 x 20.00 x 8.62 762 x 508 x 219	A30N20MP	A30N20MPP <sup>a</sup>	26.00 x 18.50	12	27.50	15.00	2.50	1.25	0.44	8.00	2.00	
				660 x 470	699	381	64	32	11	203	51		
A30N24BLP	30.00 x 24.00 x 8.62 762 x 610 x 219	A30N24MP	A30N24MPP <sup>a</sup>	26.00 x 22.50	12	27.50	16.75	3.62	1.25	0.44	8.00	2.00	
				660 x 572	699	425	92	32	11	203	51		
A30N30BLP	30.00 x 30.00 x 8.62 762 x 762 x 219	A30N30MP	A30N30MPP <sup>a</sup>	26.00 x 28.50	12	27.50	22.75	3.62	1.25	0.44	8.00	2.00	
				660 x 724	699	578	92	32	11	203	51		

Catalog Number	AxBxC in./mm	Panel	Perforated Panel	Panel Size D x E in./mm	Panel Gauge	G in./mm	H in./mm	J in./mm	Q in./mm	P in./mm	F in./mm	K in./mm
A36N24BLP	36.00 x 24.00 x 8.62 914 x 610 x 219	A36N24MP	A36N24MPP <sup>3</sup>	32.00 x 22.50 813 x 572	12	33.50 851	16.75 425	3.62 92	1.25 32	0.44 11	8.00 203	2.00 51
A36N30BLP	36.00 x 30.00 x 8.62 914 x 762 x 219	A36N30MP	A36N30MPP <sup>3</sup>	32.00 x 28.50 813 x 724	12	33.50 851	22.75 578	3.62 92	1.25 32	0.44 11	8.00 203	2.00 51
A18N18CLP	18.00 x 18.00 x 10.62 457 x 457 x 270	A18N18MP	A18N18MPP	15.00 x 16.50 381 x 419	14	15.88 403	13.00 330	2.50 64	1.06 27	0.31 8	10.00 254	1.50 38
A24N20CLP	24.00 x 20.00 x 10.62 610 x 508 x 270	A24N20MP	A24N20MPP	21.00 x 18.50 533 x 470	14	21.88 556	15.00 381	2.50 64	1.06 27	0.31 8	10.00 254	1.50 38
A30N24CLP	30.00 x 24.00 x 10.62 762 x 610 x 270	A30N24MP	A30N24MPP <sup>3</sup>	21.00 x 22.50 533 x 572	12	27.50 699	16.75 425	3.62 92	1.25 32	0.44 11	10.00 254	2.00 51
A24N24DLP	24.00 x 24.00 x 12.62 610 x 610 x 321	A24N24MP	A24N24MPP <sup>3</sup>	21.00 x 22.50 533 x 572	12	21.88 556	19.00 483	2.50 64	1.06 27	0.31 8	12.00 305	1.50 38
A30N24DLP	30.00 x 24.00 x 12.62 762 x 610 x 321	A30N24MP	A30N24MPP <sup>3</sup>	26.00 x 22.50 660 x 724	12	27.50 699	16.75 425	3.62 92	1.25 32	0.44 11	12.00 305	2.00 51
A36N30DLP	36.00 x 30.00 x 12.62 914 x 762 x 321	A36N30MP	A36N30MPP <sup>3</sup>	32.00 x 28.50 813 x 724	12	33.50 851	22.75 578	3.62 92	1.25 32	0.44 11	12.00 305	2.00 51

Purchase panels separately.

<sup>3</sup>Flanged on all four sides



## X-ON Electronics

Largest Supplier of Electrical and Electronic Components

*Click to view similar products for [hoffman manufacturer](#):*

Other Similar products are found below :

[A-1412CHQR](#) [CSD201610](#) [CSD20168SS](#) [CSD20206](#) [CSD20208SS](#) [CSD24168](#) [CSD36248](#) [PCU7](#) [PDS76R](#) [PRA197TP](#) [PT126](#)  
[A1008CHNFSS](#) [A10106CH](#) [A10106CHFL](#) [A10106PHCW](#) [A1066JFGQRR](#) [A1210CHNF](#) [A1212SC](#) [A1412CHNFSS](#) [A161208LP](#)  
[A161410CH](#) [A16H12ALP](#) [A16P14](#) [A16P16G](#) [A18P16AL](#) [A20H16BLP](#) [A20P16](#) [A24H2408SSLP](#) [Q13138PCE](#) [A404CH](#) [A606CHNF](#)  
[A606NF](#) [A806SC](#) [A845JFGR](#) [A864CHQRFGW](#) [A90P36F1](#) [HJ1412HWPL2LG](#) [HJ1816HWPL2LG](#) [RHJ1210HWPL2LG](#) [AS125SS](#)  
[ASE10X10X4](#) [ASE12X12X4](#) [E1PBG](#) [E2PBG](#) [E3PB](#) [LED24V15](#) [LF230VD](#) [A10106PHC](#) [A10P8SS](#) [A1210CHEMC](#)