



电力系统过流保护 RoHS&Pb-Free
Power System Overcurrent Protection

好利® 熔断器



产品规格书

PRODUCT SPECIFICATION

HEA690V AC/500V DC

编号: B02 HLD-PSI-1024 2022/8/8

制定:

PREPARED BY

审核:

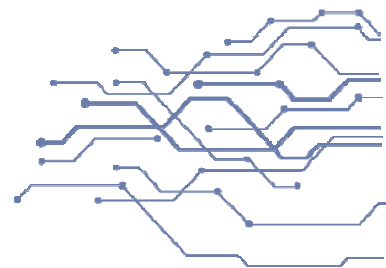
CHECKED BY

批准:

APPROVED BY



好利来(厦门)电路保护科技有限公司
Hollyland (Xiamen) Technology Corporation Limited
福建厦门市翔安区舩山东二路829号361101
T +86 592 577 2288
M sdxm@hollyfuse.com
www.hollyfuse.com



目录

Table of Contents

一、产品基本资料Basic Information	3
二、产品构造图及尺寸Dimensions	4
三、特性曲线Characteristic Curve	5
四、运输和存储 Transportation and Storage	6
五、工作和使用条件 Working and Operating Instructions	6
六、包装要求 Packing details	9

一、产品基本资料 Basic Information

- 1、产品标准 Standard: IEC 60269-4, GB/T 13539.4, UL248-13.
- 2、额定电压 Voltage: 690V AC/500V DC
- 3、额定电流 Current: 6-400A
- 4、保护类别 Protection category: aR
- 5、分断能力 Breaking Capacity: 50kA @500V DC、80kA @690V AC
- 6、环境 Environmental: RoHS Compliant, REACH
- 7、安全认证 SafetyApproval:

额定电压 RatedVoltage	CCC		cURus	
	认证范围 ApprovedRange	认证号码 Cert. No.	认证范围 ApprovedRange	文件号 File No.
690V AC/500V DC	6A~100A	2012010308559138	6A~100A	E323180
690V AC/500V DC	125A~200A	2012010308577391	/	/
690V AC/500V DC	225A~400A	2012010308588758	225A~400A	E323180

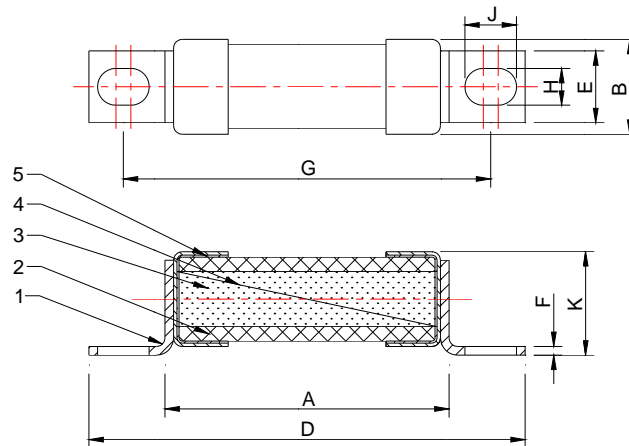
8、产品目录编号 Part No.:

目录编号 Part No.	额定电 流 Rated Current	I ² t (A ² Sec)		功耗 Watts Loss (W)	目录编号 Part No.	额定电流 Rated Current	I ² t (A ² Sec)		功耗 Watts Loss (W)
		弧前 Pre-arc	熔断 Clearing				弧前 Pre-arc	熔断 Clearing	
HEA6	6A	9	74	1.2	HEA90	90A	1 450	7 200	20.0
HEA10	10A	18	140	2.5	HEA100	100A	2 100	9 700	23.0
HEA12	12A	25	210	3.0	HEA125	125A	3 300	24 500	27.0
HEA16	16A	32	410	3.6	HEA160	160A	5 800	40 500	35.0
HEA20	20A	40	520	3.8	HEA180	180A	7 200	47 000	40.0
HEA25	25A	55	820	5.5	HEA200	200A	9 700	59 000	42.0
HEA32	32A	105	1 100	7.5	HEA225	225A	14200	97 350	45.0
HEA35	35A	210	1 400	8.0	HEA250	250A	20 400	130 000	48.0
HEA40	40A	245	1 650	9.0	HEA280	280A	24 600	180 000	51.0
HEA45	45A	270	1 800	10.0	HEA315	315A	31 000	215 000	55.0
HEA50	50A	305	2 400	12.0	HEA350	350A	49 000	320 000	58.0
HEA63	63A	405	2 800	14.5	HEA400	400A	60100	415 000	66.0
HEA80	80A	950	5 700	18.0		/	/	/	/

推荐安装扭矩mounting torque (for Reference)		
额定电流/RATED CURRENT(A)	螺栓尺寸Size of screws	力矩Torque(Nm)
6-100	M6	4.5
125-200	M8	10
225-400	M10/M12	32

二、产品构造图及尺寸 Dimensions

Part No.: HEA(amp rating)

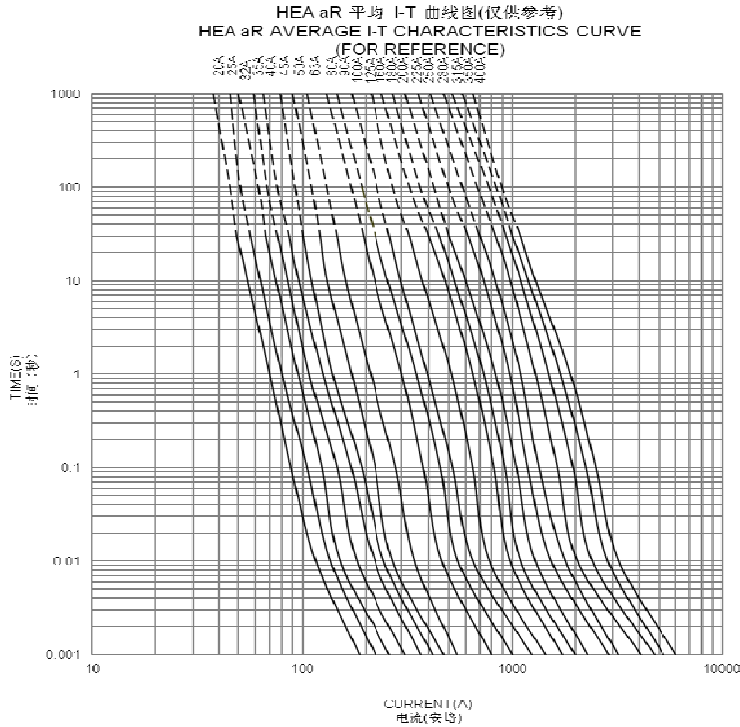


额定电流 Current Rating	尺寸 Dimensions(mm)								
	A	B	D	E	F	G	H	J	K
6A-100A	44.5±1	18.0±1	75.5±2	12.0±0.5	2.0±0.5	60.0±3	6.3+0.5/-0.1	10.25±0.5	19.0±2
125A-200A	50.5±1	27.0±1	90.5±2	20.0±0.5	3.0±0.5	70.5±3	9.0±0.5	11.0±0.5	28.0±2
225A-400A	58.0±2	38.0±1	112.0±4	26.0±0.5	3.0±0.5	84.5±3	12.0±0.5	18.0±1	41.0±2

三、特性曲线 Characteristic Curve

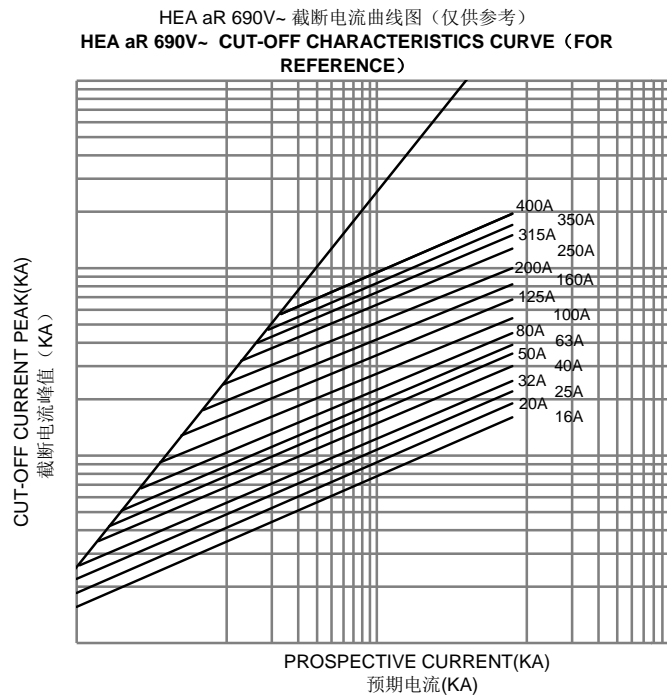
时间-电流曲线图(仅供参考)

THE AVERAGE I-T CHARACTERISTICS CURVE (FOR REFERENCE ONLY)



截断电流曲线图 (仅供参考)

CUT-OFF CHARACTERISTICS CURVE (FOR REFERENCE)



四、运输和存储 Transportation and Storage

1、运输 Transportation

包装箱运输过程中应避免雨雪侵袭和机械损伤

Avoid rain and snow invasion and mechanical damage during the transportation of packing cases.

2、存储 Storage

产品存储温度: $-40^{\circ}\text{C} \sim +90^{\circ}\text{C}$ 。在 40°C 及以上时相对湿度不大于 50%，在 20°C 以下，相对湿度不大于 90%。

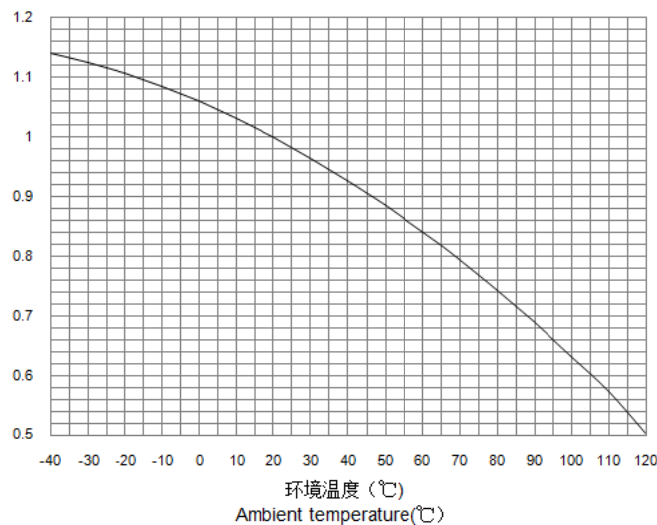
Product storage temperature: $-40^{\circ}\text{C} \sim +90^{\circ}\text{C}$. The relative humidity is not more than 50% at 40°C and above, and the relative humidity is not more than 90% below 20°C .

五、工作和使用条件 Working and Operating Instructions

1、环境温度 Ambient temperature

使用条件 Operating Temperature: $-40^{\circ}\text{C} \sim +125^{\circ}\text{C}$

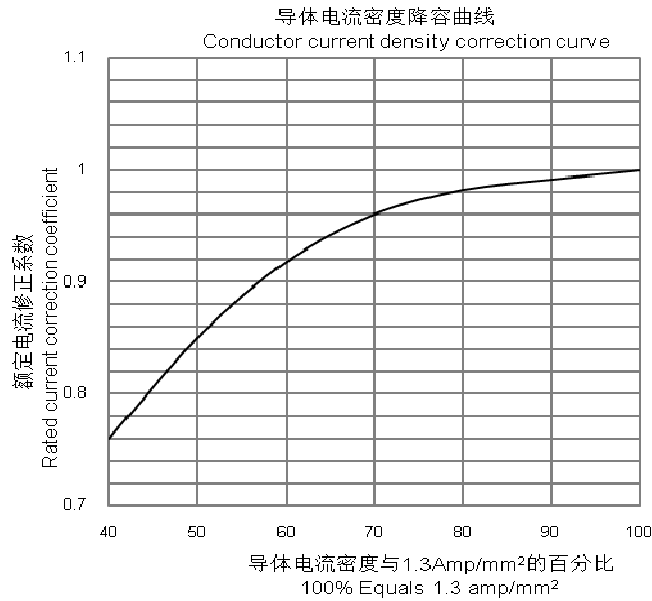
环境温度修正曲线 Ambient temperature correction curve:



2、连接导体 connecting conductor

安装熔断器的铜排电流密度建议为 $1.3\text{A}/\text{mm}^2$ (IEC 60269.4 补充部分的定义为 1.0 至 $1.6\text{A}/\text{mm}^2$)，如果铜排的承载的电流密度大于 $1.3\text{A}/\text{mm}^2$ 数值，则建议熔断器适当降低额定电流，修正系数见下图：

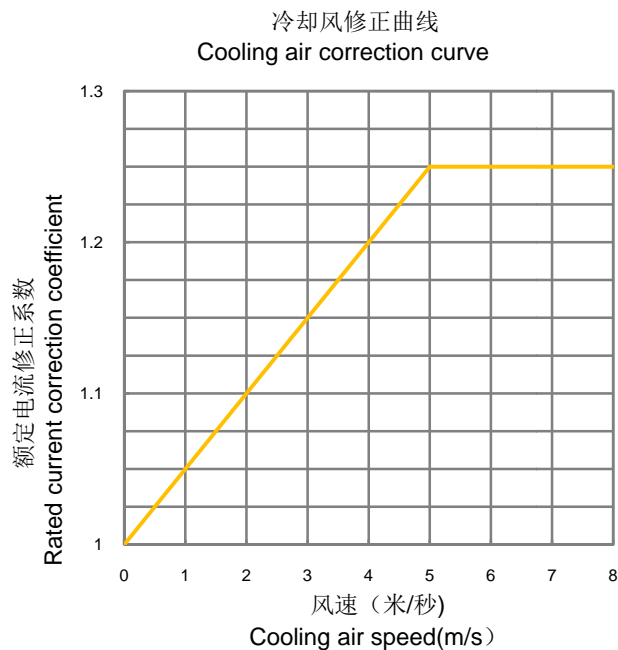
The nominal busbar current density on which the fuses are mounted should be $1.3\text{A}/\text{mm}^2$ (IEC 60269 Part 4 defines 1.0 to $1.6/\text{mm}^2$). If the busbar carries a current density more than this, then the fuse should be derated. The correction factor is shown in the following figure



3、冷却风 Cooling Air

当熔断器在存在冷却风的环境工作时，熔断器的额定电流值需进行修正，修正系数见下图：

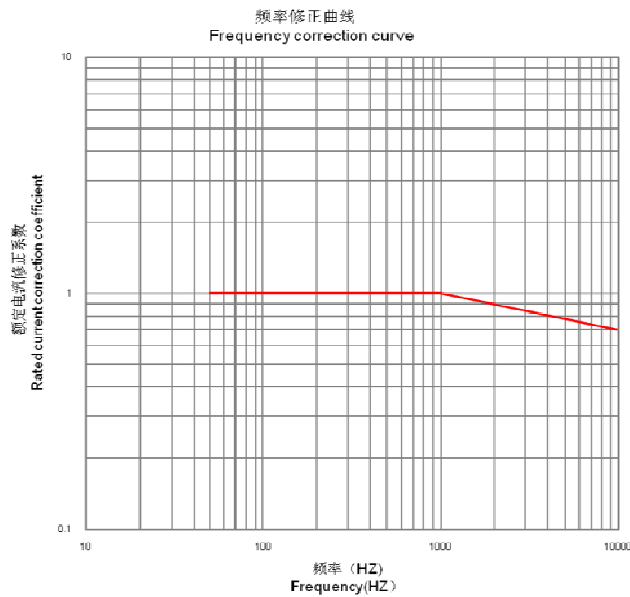
When the fuse works in the environment with cooling air, the rated current value of the fuse needs to be corrected, and the correction factor is shown in the following figure:



4、频率 Frequency

当熔断器在高频率的条件下工作时，熔断器的额定电流值需进行修正，修正系数见下图

When the fuse is operating at high frequency, the current rating should be corrected, the correction factor is shown in the following figure:



5、海拔高度 Altitude

正常使用海拔高度不超过 2000 米，当超过 2000 米，熔断器的额定电流需进行修正：

When fuses are used at high altitudes, the current rating should be corrected, the correction factor is shown in the following table:

海拔h(m)	额定电流修正系数 Rated current correction coefficient
2000	1.000
2500	0.975
3000	0.950
3500	0.925
4000	0.900
4500	0.875
5000	0.850

6、大气条件 Atmospheric Conditions

空气是干净的，其相对湿度在最高温度为 40℃ 时不超过 50%。

The air is clean and its relative humidity does not exceed 50 % at the maximum temperature of 40 °C.

在较低的温度下可以有较高的相对湿度，例如：在 20℃ 以下，相对湿度可以达到 90%。在这些条件下，由于温度变化，可能会偶然发生中等凝露。

Higher relative humidity is permitted at lower temperatures, for example, 90 % at 20°C. Under these conditions, moderate condensation may occasionally occur due to variation in temperature.

六、包装要求 Packingdetails

6-100A:

小盒参考尺寸 Small Box Size: 长×宽×高 length × width × height=78*68*26mm。

外箱参考尺寸 External Carton Size: 长×宽×高 length × width × height=370*305*318mm。

包装要求 Packingdetails: 3 个/小盒 3EA/ Small Box; 160 小盒/每箱 160Small Box/ Carton。

125-200A:

小盒参考尺寸 Small Box Size: 长×宽×高 length × width × height=101*96*33mm。

外箱参考尺寸 External Carton Size: 长×宽×高 length × width × height=403*328*205mm。

包装要求 Packingdetails: 3 个/小盒 3EA/ Small Box; 60 小盒/每箱 60Small Box/ Carton。

225-400A:

小盒参考尺寸 Small Box Size: 长×宽×高 length × width × height=123*83*47mm。

外箱参考尺寸 External Carton Size: 长×宽×高 length × width × height=393*273*290mm。

包装要求 Packingdetails: 2 个/小盒 2EA/ Small Box; 45 小盒/每箱 45Small Box/ Carton。

所有产品的包装应能达到防潮、抗振的作用，以防在运输或贮存过程中产品受潮或损坏。

Packing should meet the requirements of anti-moisture and anti-shaking so that the products will not absorb moisture or be damaged during transportation or storage.

X-ON Electronics

Largest Supplier of Electrical and Electronic Components

Click to view similar products for [Specialty Fuses](#) category:

Click to view products by [HOLLY](#) manufacturer:

Other Similar products are found below :

[ECF-1](#) [ECF-1/2](#) [ECF-2](#) [ECF-3](#) [ECF-4](#) [170M1418](#) [N-2-1/2](#) [N-3-2/10](#) [S-2](#) [170M1564D](#) [170M4241](#) [ABS-25](#) [ABS-30](#) [ABS-8](#) [FWP-25A14FI](#)
[FWP-80A22FI](#) [30CIF06](#) [TJD](#) [TPL-BL](#) [KLC40](#) [NITD25](#) [04450080FX850](#) [NITD16](#) [ECF-5](#) [TDC180-10](#) [TPM-25](#) [170M3509](#) [DEO200](#)
[004117001](#) [45ET](#) [170M5810D](#) [10H07C](#) [SDL-2](#) [CC12M10A](#) [TDC600-2-R](#) [CBW57-HB-15A-P](#) [CBW58-HL4-30A-5C](#) [CBW58-HS-15A-5C](#)
[CBW58-HS-20A-5C](#) [0AALBK300-BA](#) [170M8211](#) [STD2](#) [STD4](#) [4D27FB](#) [6H07-660](#) [15.5CAVH1E](#) [170M1360](#) [011-9926](#) [AD32](#) [AD16](#)