

**MICRO SWITCH**  
 FREEPORT ILLINOIS, U.S.A.  
 A DIVISION OF HONEYWELL  
 FED. MFG. CODE 91929

**SWITCH-TOGGLE**

CATALOG LISTING  
**104TL286-72 SERIES**

CATALOG LISTING  
 △ 6

AVAILABLE LOCKING COMBINATIONS FOR CONFIGURATION SEE LETTERING DETAILS

STYLE NUMBER

CURRENT CAPACITY (AMPS)

RESISTIVE LOAD DC VOLTS			LOAD AC VOLTS		LAMP LOAD		INDUCTIVE LOAD	
28	125	250	125	250	28 VDC	125 VAC	28 VDC	125 VAC
7.5	.75	.5	7.5	6	4	2	7.5	7.5

104TL286-72

E,L,N

**M104TL286-72 SERIES**

DRAWING NUMBER  
**9**

ISSUE  
**9**

REVISIONS

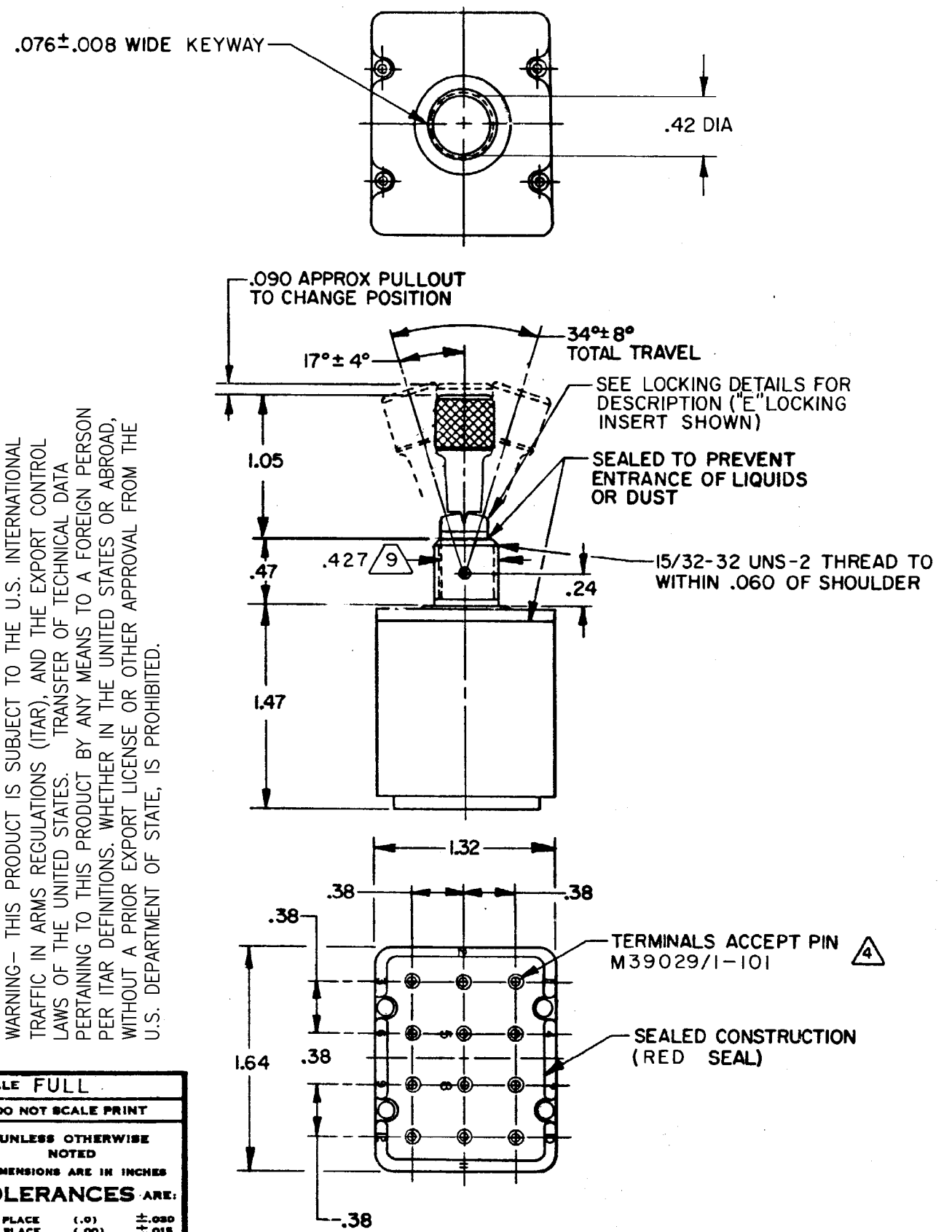
A	CO	39770
B	CO	44967
C	CO	52278
D	CO	52324
E	CO	53999
F	CO	56074
G	CO	57478
H	CO	0010955

DRAWN  
T M M 17 APR 78

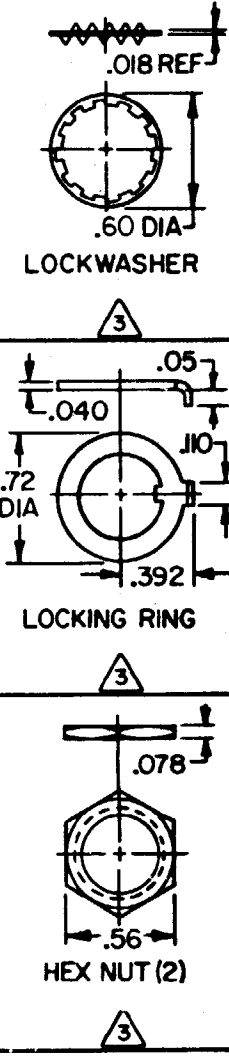
RELEASE NO. ETS  
CHECK  
DFK 22 APR 78  
CHECK  
C 25 APR 78  
CHECK  
C 25 APR 78  
CHECK  
C 25 APR 78  
CHECK  
C 25 APR 78  
CHECK  
C 25 APR 78  
CHECK  
C 25 APR 78

WARNING- THIS PRODUCT IS SUBJECT TO THE U.S. INTERNATIONAL TRAFFIC IN ARMS REGULATIONS (ITAR), AND THE EXPORT CONTROL LAWS OF THE UNITED STATES. TRANSFER OF TECHNICAL DATA PERTAINING TO THIS PRODUCT BY ANY MEANS TO A FOREIGN PERSON PER ITAR DEFINITIONS, WHETHER IN THE UNITED STATES OR ABROAD, WITHOUT A PRIOR EXPORT LICENSE OR OTHER APPROVAL FROM THE U.S. DEPARTMENT OF STATE, IS PROHIBITED.

SCALE FULL  
 DO NOT SCALE PRINT  
 UNLESS OTHERWISE NOTED  
 DIMENSIONS ARE IN INCHES  
**TOLERANCES ARE:**  
 ONE PLACE (.0) ±.030  
 TWO PLACE (.00) ±.015  
 THREE PLACE (.000) ±.005  
 ANGLES  
 WEIGHT .240 LB MAX



"A" △ 5 LOCKED IN THREE POSITIONS	"B" △ 5 LOCKED IN CENTER AND EXTREME POSITION (KEYWAY SIDE)	"D" △ 5 LOCKED OUT OF CENTER POSITION	"E" △ 5 LOCKED IN CENTER POSITION	"F" △ 5 LOCKED IN EXTREME POSITION (OPPOSITE KEYWAY)
"G" △ 5 LOCKED IN EXTREME POSITION (KEYWAY SIDE)	"H" △ 5 LOCKED OUT OF CENTER AND EXTREME POSITION (KEYWAY SIDE)	"J" △ 5 LOCKED OUT OF CENTER AND EXTREME POSITION (OPPOSITE KEYWAY)	"K" △ 5 LOCKED IN CENTER AND EXTREME POSITION (OPPOSITE KEYWAY)	"L" △ 5 LOCKED OUT OF EXTREME POSITION (KEYWAY SIDE)
"M" △ 5 LOCKED OUT OF AND INTO EXTREME POSITION (OPPOSITE KEYWAY)	"N" △ 5 LOCKED OUT OF EXTREME POSITION (OPPOSITE KEYWAY)	"P" △ 5 LOCKED OUT OF AND INTO EXTREME POSITION (KEYWAY SIDE)		



CIRCUIT MADE WITH TOGGLE LEVER IN

KEYWAY SIDE	CENTER	OPPOSITE KEYWAY
MOMENTARY POSITION	MAINTAINED POSITION	MOMENTARY POSITION

- NOTES
- SWITCHES ARE CAPABLE OF WITHSTANDING A TEMPERATURE OF 160°F CONTINUOUSLY AT FULL RATED LOAD
  - CIRCUIT DESIGNATION AND MICRO SWITCH CATALOG LISTING STAMPED ON SIDE OF SWITCH
  - FURNISHED UNASSEMBLED
  - THE SEALING GROMMET SHALL SEAL ON A SMOOTH WIRE INSULATION OF .040 TO .083 DIAMETER (16-20 GAGE)
  - KEYWAY SHOWN ON LEFT
  - SUFFIX LETTER MUST BE ADDED FOR DESIRED TYPE OF TOGGLE LOCKING. SEE CHART FOR AVAILABLE LOCKING COMBINATIONS
  - UNUSED TERMINAL HOLES MAY BE SEALED WITH PLUGS M83723/28-20
  - TOGGLE AND BUSHING - COVER ARE NICKEL PLATED
  - FROM BOTTOM OF KEYWAY TO MAJOR DIA. OF 15/32 THREAD

## X-ON Electronics

Largest Supplier of Electrical and Electronic Components

*Click to view similar products for [Toggle Switches](#) category:*

*Click to view products by [Honeywell](#) manufacturer:*

Other Similar products are found below :

[8928K478](#) [020017-13](#) [60012L](#) [6006L](#) [CS115W](#) [CS120W](#) [637H/25](#) [6663](#) [7101SPDV30BE](#) [7103SDV30BE](#) [7105D](#) [7108P3YAV2BE](#)  
[71YY50282](#) [7300K36](#) [7301K38](#) [7306K36](#) [7310K36](#) [7506K4](#) [7592K6](#) [7660K12](#) [7691K14](#) [7700K1](#) [8391K108](#) [8396K108](#) [8824K14](#)  
[8828K13](#) [8835K3](#) [8858K44](#) [PS83-121G](#) [1-1825192-0](#) [A201SCWZB04](#) [A207SYCB04](#) [A208J61ZQ0004](#) [A221T1TCQ](#) [A232M1YCQ](#)  
[A323S1CWZQ](#) [A423S1CWZG-M8](#) [1201W](#) [12156AX408](#) [12147AGKX679](#) [12246X778](#) [12TW49-3D](#) [130312](#) [13037L](#) [13001X](#)  
[AE101MD1W4B04](#) [AE208SD1W4B04](#) [MS24659-22D](#) [MS27407-5](#) [1520230-9](#)