

MICRO SWITCH

A DIVISION OF HONEYWELL-REGULATOR COMPANY,
BREEPORT, ILLINOIS
FED. MFR. CODE 91929

SWITCH-ENCLOSED

(M) 105 ML1
ISSUE 5

105 ML1

M

DRAWING NUMBER

ISSUE
X
10

REPLACES

RELEASE NO.

CHECK

REVISIONS

A	CO11247	O. M. W.	4 MAR 58
B	CO12789	M. B. F.	13 MAY 58
C	CO28064	M. B. S.	25 JUNE 69
D	CO55051-B	J. A. P.	17 DEC 84
E	CO74287	G. J. W.	22 APR 93

CHECK

CHECK

CHECK

CHECK

CHECK

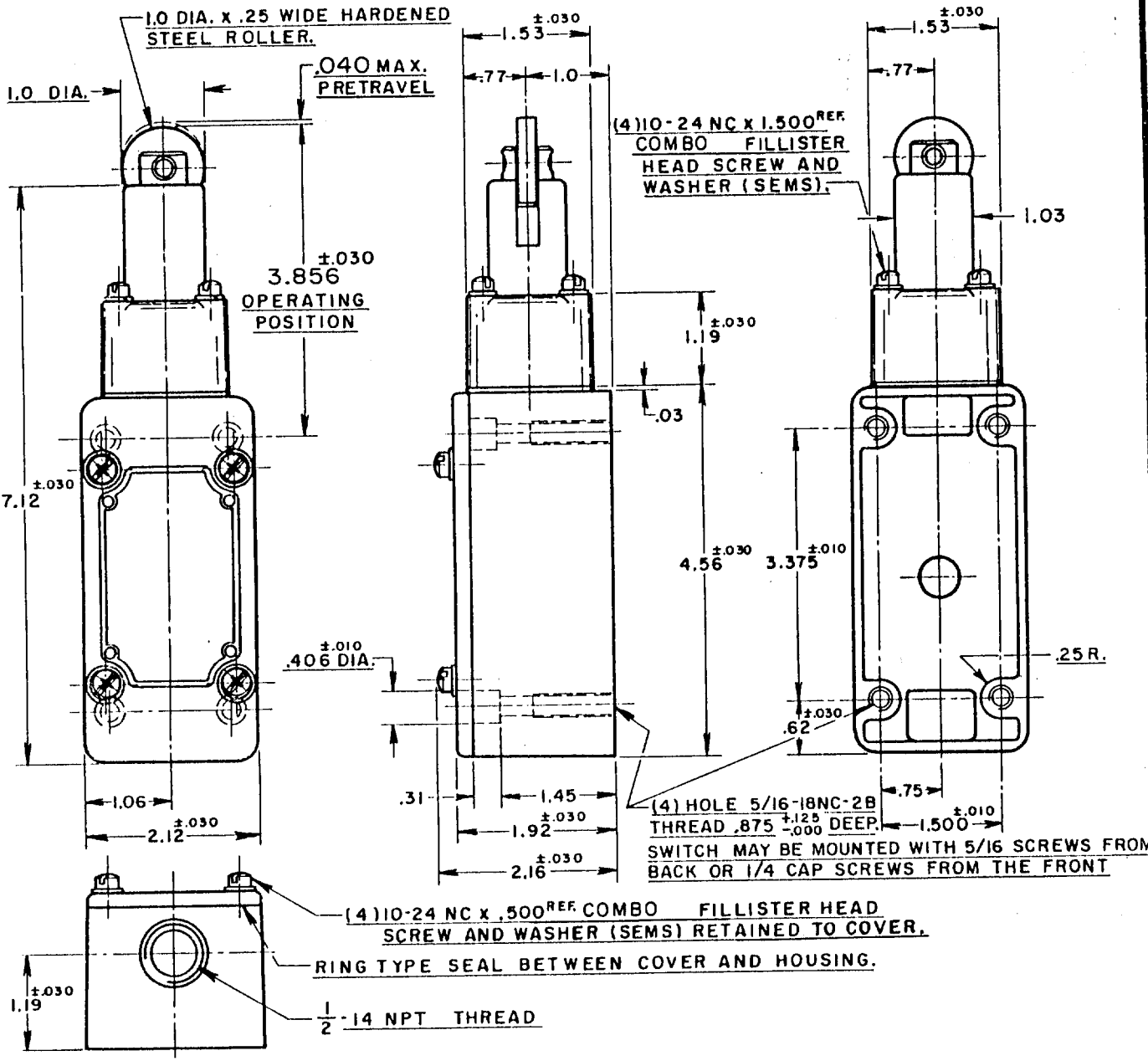
CHECK

CHECK

CHECK

CHECK

CHECK



NOTE -

- 1-ROLLER ASSEMBLY MAY BE RE-ASSEMBLED 90° FROM POSITION SHOWN.
- 2-IT IS ESSENTIAL TO PREVENT ENTRANCE OF HARMFUL AGENTS THRU THE CONDUIT OPENING TO OBTAIN THE FULL BENEFIT OF THE SEALED CONSTRUCTION PROVIDED IN THIS UNIT.

THIS DRAWING COVERS A PROPRIETARY ITEM AND IS THE PROPERTY OF MICRO SWITCH, A DIVISION OF HONEYWELL. THIS DRAWING IS NOT TO BE COPIED OR USED WITHOUT THE APPROVAL OF MICRO SWITCH.

CHARACTERISTICS	
OPERATING FORCE	--- 6 LBS. APPROX.
RELEASE FORCE	--- 4 LBS. APPROX.
DIFFERENTIAL TRAVEL	--- .020 MAX.
OVERTRAVEL	--- .500 MIN.
FREE PLAY	--- .010 MAX.
SWITCH-BASIC REPLACEMENT	--- 1MNI

ELECTRICAL DATA	
CONTACT ARRANGEMENT	BREAK DISTANCE
TWO CIRCUIT DOUBLE THROW DOUBLE BREAK	
10A-120, 240, 480, OR 600 VAC 1/2 HP-120 VAC; 1 HP-240 VAC 0.8 A-115 VDC; 0.4 A-230 VDC PILOT DUTY; 600 VAC MAX	

SCALE 1/2 TO 1	
DO NOT SCALE PRINT	
UNLESS OTHERWISE SPECIFIED	
DIMENSIONS ARE IN INCHES	
TOLERANCES ARE:	
ONE PLACE (.0)	±.030
TWO PLACE (.00)	±.015
THREE PLACE (.000)	±.008
ANGLES	±
WEIGHT	

DRAWN
O. M. W.
4 MAR 58

GCH 12 MAR 58

CHECK

CHECK

CHECK

CHECK



X-ON Electronics

Largest Supplier of Electrical and Electronic Components

Click to view similar products for [Limit Switches](#) category:

Click to view products by [Honeywell](#) manufacturer:

Other Similar products are found below :

[5ML1-E1](#) [5ML31](#) [LZG1](#) [LZL1-6C](#) [622EN114-R](#) [622EN18-6](#) [622EN224-6B](#) [622EN230](#) [622EN237-R](#) [622EN69-3](#) [622EN85-RB](#) [MA-10019](#)
[6PA109](#) [7LS51](#) [83547001](#) [83725002](#) [83830001](#) [83840701](#) [83841001](#) [83881140](#) [8AS42](#) [8LS10](#) [8LS125-4PG](#) [8LS152-4PGN20](#) [914CE16-](#)
[3A](#) [914CE3-3L1](#) [915PA10](#) [91MCE16-P2O](#) [924CE16-Y3](#) [924CE1-S6](#) [924CE1-T25A](#) [924CE1-T3](#) [924CE1-T9A](#) [924CE2-T9](#) [924CE31-Y20-](#)
[X5](#) [924CE31-Y3L1](#) [GL-10054](#) [GLAB26J2B](#) [GLDB03C-6](#) [GLDC05C](#) [GLZ324](#) [PS21R-NT11N7-YK0](#) [H3141CAKAA](#) [RDI-G-L5B](#) [DD-](#)
[10000](#) [DT-2R3-A7](#) [14CE16-3N28](#) [14CE18-N15](#) [151ML3-E1](#) [E3102BAAAA](#)